



TOYOTA

2022 Highlander

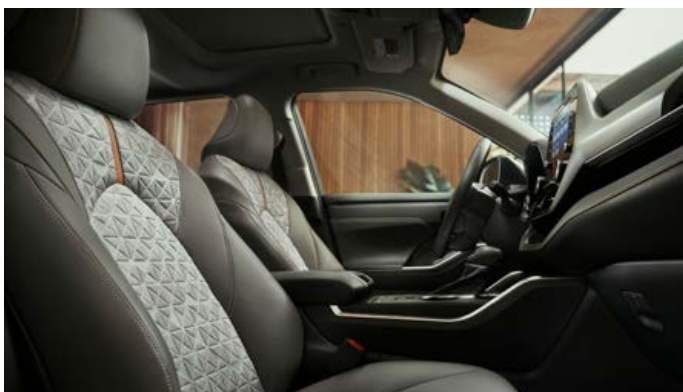
2022 HIGHLANDER

Designed to go the extra mile.

It's time to stand out from the crowd. That's why the 2022 Toyota Highlander is designed to make jaws drop and go above and beyond the ordinary. Whether you choose the powerful gas variant or the fuel-efficient hybrid, its refined styling, comfort and safety features will help elevate your drive from the moment you sit in the driver's seat.



Left to right: Hybrid Platinum AWD shown in Ruby Flare Pearl; Platinum AWD shown in Moon Dust.
Below left: Highlander Hybrid Bronze Edition interior shown in Graphite. Below right: Platinum interior shown in Harvest Beige leather trim.



Always drive safely and obey traffic laws.



See numbered footnotes in Disclosures section.



XSE AWD shown in Magnetic Gray Metallic.

See footnote 2 in Disclosures section for more information on towing.

PERFORMANCE

Push the limits of every day.

Whether you're hustling around town or venturing out to see what nature has to offer, find your confidence growing every time you're behind the wheel of Highlander. Thanks to a combination of a strong V6 engine and versatile capabilities, Highlander makes getting there part of the adventure.

XSE sport-tuned suspension

Unique to Highlander XSE, sport-tuned shock absorbers, higher-rate springs and a rear stabilizer bar give you better road handling, while its lower, athletic stance shows it's ready to hit the ground running.

Multi-Terrain Select

For Highlander AWD models, this intelligent system lets you choose between four modes for improved traction. When activated, the system is designed to sense slippage and regulate wheelspin — helping to maximize driving performance on different surfaces.

Dynamic Torque Vectoring AWD

This available system improves responsiveness and stability by sending up to 50 percent of the power to the rear and then further distributing more power to the wheel that needs it.

V6 efficiency

More miles mean more fun. From date nights to day trips, Highlander V6 models have up to a manufacturer-estimated 24 combined mpg rating³ to help you get the most out of every drive.

V6 power

Highlander's powerful and smooth 3.5-liter V6 engine produces 295 hp and 263 lb.-ft. of torque. And when adventures require more, take advantage of its impressive towing capacity of up to 5000 lbs.²

Available drive modes

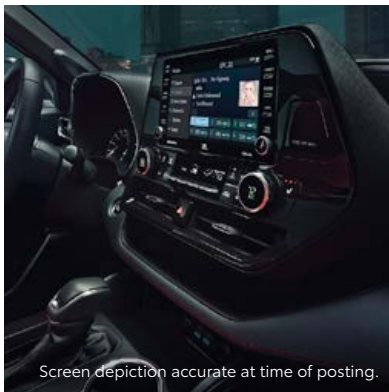
Three distinct drive modes let you tailor Highlander's driving dynamics. Sport Mode provides sharper acceleration, Eco Mode helps maximize fuel efficiency, and Normal Mode blends fuel economy with performance.

See numbered footnotes in Disclosures section.

INTERIOR

Ride with class.

Highlander ups convenience and elegance with its captivating, modern interior. From rain-sensing wipers to an available 12.3-in. touchscreen display that gives you access to a variety of its systems with an intuitive touch, luxury is at the forefront. Even the stylish center console features available Qi-compatible wireless smartphone charging⁴ to bring more ease to your drive.



Screen depiction accurate at time of posting.

Premium interior

Feel the quality from every seat. A standard power-adjustable driver's seat, available heated and ventilated front seats, and available heated second-row seats allow you and your crew to personalize comfort, while the premium materials throughout raise its level of sophistication.



Storage capacity

Highlander's interior is as versatile as your life demands. When you need to put a priority on cargo space, the second- and third-row seats fold flat to open up to 84.3 cu. ft. of space.⁵



Panoramic moonroof

Follow the stars above with Highlander's available panoramic glass roof with front power tilt/slide moonroof. Slide it open to catch a breeze and enjoy the wide-open view, or easily close it all up with the power-retractable sunshade.



Two-tone XSE interior

The sporty vibe of Highlander XSE continues inside, with a look to match. Available Red and Black leather-trimmed seats with Red accent stitching across the instrument panel emphasize its modern design and will inspire you to take it to new places.

Third-row seating

When you're loading them up with your crew, Highlander's available second-row bench seating and third-row seats let you carry up to eight people.

See numbered footnotes in Disclosures section.



Hybrid Bronze Edition shown in Cement.

EXTERIOR

Style that's hard to ignore.

Highlander's bold design is guaranteed to turn heads at every stop. Taking the sleek style a step further are the Hybrid Bronze Edition's captivating bronze accents. From 18-in. bronze-finish wheels to mid-century-inspired embossed fabric seat inserts and bronze-colored stitching throughout the cabin, this special edition is decorated with subtle yet captivating details inside and out.

Twin-tip exhaust

Underneath XSE's unique rear bumper features Highlander's first-ever twin-tip exhaust. Chrome-plated for durability and added attention, it helps finish off the sportier rear design.

20-in. wheels

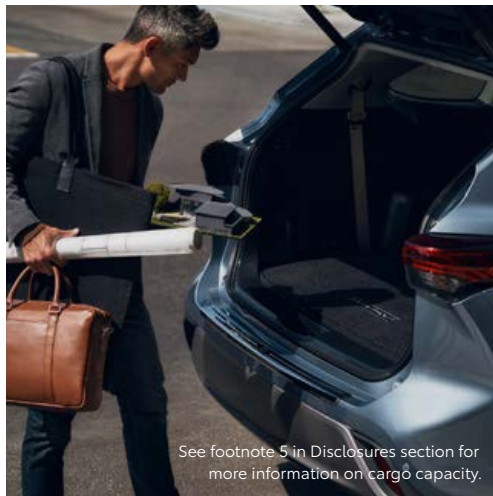
Highlander shows off more style with its 20-in. alloy wheels. Standard on XSE, Limited and Platinum, these sleek wheels add more sophistication without compromising performance.

Hands-free power rear liftgate

Easy to use and even more convenient. When your hands are full, Highlander's available hands-free power liftgate⁶ senses your Smart Key fob⁷ and opens automatically when you kick your foot under the rear bumper.

LED headlights

Highlander's stylish standard LED headlights provide a crisp, clean light, while available auto-leveling LED projector-beam headlights help keep light aimed down at the road for better visibility.



See footnote 5 in Disclosures section for more information on cargo capacity.



See numbered footnotes in Disclosures section.



Hybrid Bronze Edition shown in Cement.

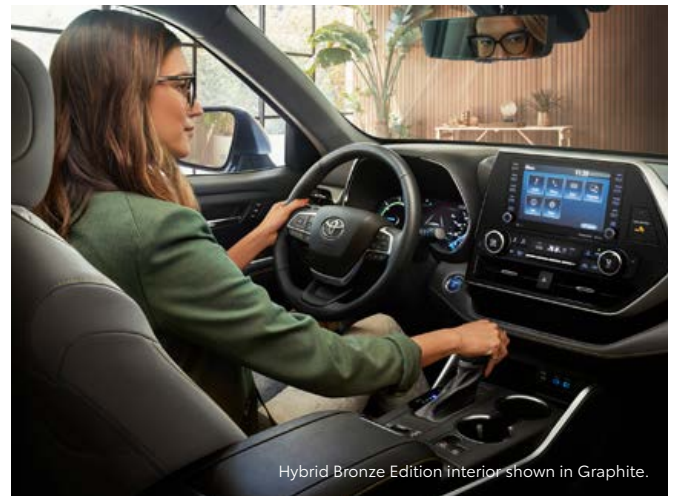
HYBRID

Get the most out of every mile.

Highlander Hybrid has the drive to do it all. With a choice of Front-Wheel Drive (FWD) for efficient capability or All-Wheel Drive (AWD) for extra traction, its hybrid powertrain gets you to more places with up to a manufacturer-estimated 36 mpg combined rating³

36

Up to est. mpg³



Hybrid Bronze Edition interior shown in Graphite.

Hybrid drive modes

Highlander Hybrid offers multiple selectable driving modes that let you choose how it performs: Normal for everyday driving, Eco for maximum efficiency, Sport for improved acceleration, EV Mode⁸, which allows electric-only driving at low speeds for short distances, and Trail Mode, which gives AWD models added traction.

1500W power inverter

Highlander Hybrid lets you bring the creature comforts of home wherever you go. Just plug in to the available 1500W power inverter⁹ in the rear cargo area to power up your essentials.

See numbered footnotes in Disclosures section.

Amplify your drive.

Take advantage of smarter and convenient technologies designed to simplify your everyday life. From a suite of services that are there for you 24/7 to an immersive audio multimedia system, you can stay connected to your world.



Connected Services

Our available suite of Connected Services provides added convenience and peace of mind.¹⁰

- ✓ **Safety Connect[®]**
Emergency SOS assistance and 24/7 Toyota Roadside Assistance.^{11, 12}
- ✓ **Service Connect**
Get personalized maintenance updates and vehicle health reports.¹³
- ✓ **Remote Connect**
Start, lock/unlock your doors and more, using your compatible smart device.¹⁴
- ✓ **Wi-Fi Connect**
Turn your Toyota into a hotspot with 4G connectivity.¹⁵
- ✓ **Destination Assist**
24/7 live agent assistance to locate your next destination.¹⁶

To view included trial details, please visit toyota.com/connected-services.

Audio Multimedia

Make every drive more personal. By utilizing your vehicle's touchscreen display and audio multimedia capabilities, you'll always have access to what you want. Whether it's listening to your favorite playlist or finding the most scenic route to your destination, you'll enjoy the latest in connectivity and technologies that are all about you.



Apple CarPlay[®]

Bring along a familiar face. With Apple CarPlay^{®17} compatibility, you can use your compatible iPhone^{®18} with the audio multimedia system to get directions, make calls, send and receive messages, and listen to music — all while staying focused on your commute.



Android Auto[™]

Stay connected on the road. By pairing your compatible Android^{™19} phone with the audio multimedia system, Android Auto^{™20} lets you access your Google Assistant⁶⁶ get real-time traffic alerts, make and receive phone calls, listen to your favorite soundtrack and more.



SiriusXM[®] w/3-month Platinum Plan trial subscription

SiriusXM^{®21} has premium entertainment that you won't hear anywhere else. With the Platinum Plan, you get 350+ channels, including 165+ channels in your vehicle, to enjoy ad-free music, plus sports, news, talk, comedy and more.²²



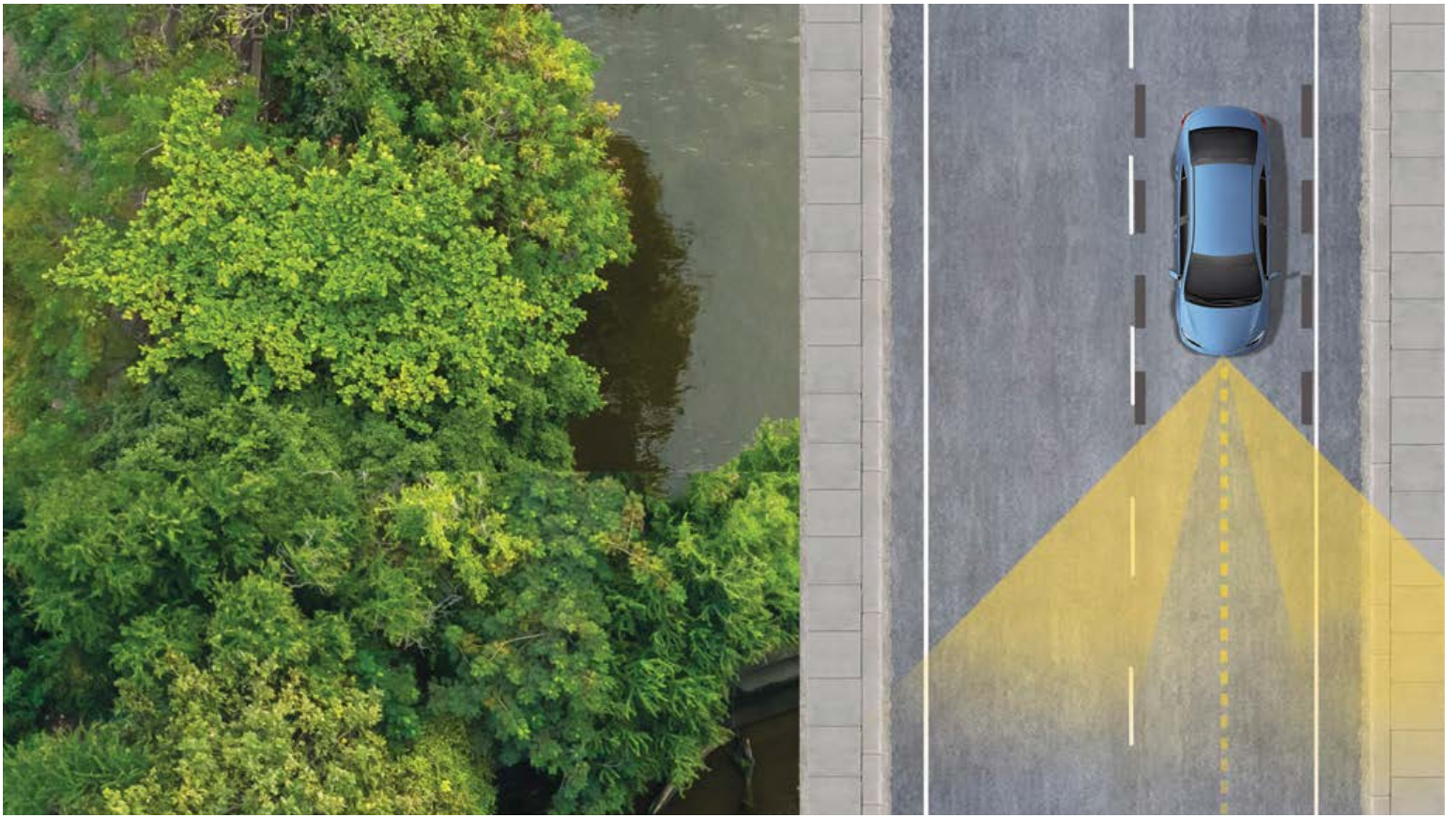
Amazon Alexa

Almost anywhere the road takes you, Amazon Alexa²³ connectivity follows. With a smartphone connection and the Toyota+Alexa app, all you have to do is ask Alexa to play music, listen to audiobooks, hear the news, check weather, control smart-home devices and more.



JBL[®]

Feel the difference and hear the truth. Designed specifically for Toyota, JBL^{®24} finely tunes each speaker to the interior of the vehicle. Just turn up the volume to hear the crisp, rich, vibrant sound come through.



TOYOTA SAFETY SENSE™ 2.5+ (TSS 2.5+)

Peace of mind comes standard.

Toyota Safety Sense™ 2.5+ (TSS 2.5+)²⁵ is the latest bundle of active safety features included on many new Toyota vehicles at no additional cost. These innovative features were designed to help protect you and your passengers from harm.



Pre-Collision System with Pedestrian Detection²⁶



Full-Speed Range Dynamic Radar Cruise Control²⁷



Lane Departure Alert with Steering Assist²⁸



Automatic High Beams²⁹



Lane Tracing Assist³⁰



Road Sign Assist³¹

HIGHLANDER MODELS



L

Includes these standard features

Mechanical/Performance

- ✓ 3.5-liter V6 with 295 hp
- ✓ Direct Shift-8AT (8-speed Electronically Controlled automatic Transmission)
- ✓ Available All-Wheel Drive (AWD)
- ✓ Snow Mode + Drive Mode Select (Eco, Normal, Sport)
- ✓ Available Multi-Terrain Select (MTS) (Mud/Sand, Rock/Dirt, Normal)
- ✓ Up to 21 city/29 highway/24 combined est. mpg rating³

Exterior Features

- ✓ Color-keyed heated power outside mirrors with turn signal and manual folding feature
- ✓ LED projector headlights with Daytime Running Lights (DRL)
- ✓ LED taillights
- ✓ Front grille in material black with silver paint surround
- ✓ 18-in. painted alloy wheels

Interior Features

- ✓ Seating for eight
- ✓ Three-zone automatic climate control
- ✓ Fabric-trimmed seats
 - 8-way power-adjustable driver's seat
 - 4-way manual-adjustable front passenger seat
 - 60/40 split, sliding and reclining fold-flat second-row bench seats
 - 60/40 split, fold-flat third-row seats
- ✓ Five total USB ports³² and two 12V outlets³³
- ✓ 4.2-in. color LCD Multi-Information Display (MID)
- ✓ Smart Key System⁷ with Push Button Start

Audio Multimedia

- ✓ Audio includes:
 - 8.0-in. touchscreen and six speakers
 - Android Auto^{TM20} & Apple CarPlay^{®17} & Amazon Alexa²³ compatible
 - SiriusXM^{®21} with 3-month Platinum Plan trial subscription²²
- ✓ Connected Services trials¹⁰ including Safety Connect^{®11} and Wi-Fi Connect¹⁵

Safety Features

- ✓ Toyota Safety Sense[™] 2.5+ (TSS 2.5+)²⁵
- ✓ Star Safety System[™]
- ✓ Eight airbags³⁴
- ✓ Rear-seat reminder³⁵



LE

Adds these top features

Exterior Features

- ✓ Color-keyed heated power outside mirrors with turn signal and blind spot warning³⁶ indicators and manual folding feature
- ✓ LED fog lights
- ✓ Height-adjustable power liftgate with jam protection

Interior Features

- ✓ Leather-trimmed shift knob and steering wheel
- ✓ Smart Key System⁷ with Push Button Start with liftgate functions

Audio Multimedia

- ✓ Audio Plus includes:
 - 8.0-in. touchscreen and six speakers
 - Android Auto^{TM20} & Apple CarPlay^{®17} & Amazon Alexa²³ compatible
 - SiriusXM^{®21} with 3-month Platinum Plan trial subscription²²
- ✓ Connected Services trials¹⁰ including Safety Connect^{®11}, Service Connect¹³, Remote Connect¹⁴ and Wi-Fi Connect¹⁵

Safety Features

- ✓ Blind Spot Monitor (BSM)³⁶ with Rear Cross-Traffic Alert (RCTA)³⁷



XLE

Adds these top features

Exterior Features

- ✓ 18-in. machined-finish alloy wheels
- ✓ Power tilt/slide moonroof
- ✓ Roof rails

Interior Features

- ✓ Qi-compatible wireless smartphone charging⁴
- ✓ Auto-dimming rearview mirror with HomeLink^{®38} universal transceiver
- ✓ SofTex[®]-trimmed³⁹ front- and second-row seats
 - Heated front seats
 - 10-way power-adjustable driver's seat including power lumbar support
 - 4-way power-adjustable front passenger seat
- ✓ 7-in. color LCD Multi-Information Display (MID)
- ✓ Second-row sunshades

Packages/Options

- ✓ Premium Audio with Dynamic Navigation⁴⁰ with 3-year trial⁴¹
- ✓ Seating for up to eight with second-row bench seat and 60/40 split/fold seats

HIGHLANDER MODELS



XSE

Adds these top features

Mechanical/Performance

- ✓ Sport-tuned suspension

Exterior Features

- ✓ LED projector headlights with black accents and LED-strip Daytime Running Lights (DRL)
- ✓ 20-in. machined-finish alloy wheels
- ✓ Aggressive mesh front grille with sporty front bumper and lower spoiler
- ✓ Rear lower bumper with chrome lower spoiler trim
- ✓ Color-keyed side rocker panels with chrome lower trim
- ✓ Black roof rails
- ✓ Twin-tip exhaust

Interior Features

- ✓ Ambient interior lighting

Packages/Options

- ✓ Premium Audio with Dynamic Navigation⁴⁰ with 3-year trial⁴¹ and 11 JBL^{®24} speakers including subwoofer and amplifier
- ✓ Red leather-trimmed front- and second-row seats



Limited

Adds these top features to those offered on XLE

Exterior Features

- ✓ Color-keyed heated power outside mirrors with puddle lights with integrated Highlander logo, turn signal, blind spot warning³⁶ indicators and memory feature
- ✓ High-output LED fog lights
- ✓ 20-in. chrome wheels
- ✓ Front grille in black paint with chrome-plated surround
- ✓ Height-adjustable hands-free power liftgate with jam protection⁶

Interior Features

- ✓ Leather-trimmed front- and second-row seats
 - Heated and ventilated front seats
 - 10-way power-adjustable driver's seat including power lumbar support
 - 4-way power-adjustable front passenger seat
 - Seat memory function
- ✓ Heated steering wheel

- ✓ Faux wood door trim and ornamental dash trim

- ✓ Front doorsill metal scuff plate

- ✓ One 120V outlet (100W)⁴² located on the bottom rear of the center console

Audio Multimedia

- ✓ Premium Audio includes:
 - Dynamic Navigation⁴⁰ with 3-year trial⁴¹
 - 8.0-in. touchscreen with 11 JBL^{®24} speakers including subwoofer and amplifier
 - Android Auto^{™20} & Apple CarPlay^{®17} & Amazon Alexa²³ compatible
 - SiriusXM^{®21} with 3-month Platinum Plan trial subscription²²
- ✓ Connected Services trials,¹⁰ including Safety Connect,^{®11} Service Connect,¹³ Remote Connect,¹⁴ Wi-Fi Connect¹⁵ and Destination Assist¹⁶

Packages/Options

- ✓ 12.3-in. touchscreen with Bird's Eye View Camera⁴³
- ✓ Seating for up to eight with second-row bench seat and 60/40 split/fold seats



Platinum

Adds these top features to those offered on Limited

Exterior Features

- ✓ LED projector headlights with Adaptive Front-Lighting System (AFS)⁴⁴ auto leveling and LED-strip Daytime Running Lights (DRL)
- ✓ Front grille in black paint and chrome-plated surround with front lower bumper in silver finish
- ✓ Rear lower bumper accent
- ✓ Rear bumper scuff plate
- ✓ 20-in. alloy wheels
- ✓ Rain-sensing washer-linked variable intermittent windshield wipers
- ✓ Power Panoramic View Moonroof with sunshade and one-touch open/close with jam protection

Interior Features

- ✓ Leather-trimmed front- and second-row seats
 - Heated and ventilated front seats
 - Heated second-row captain's chairs
 - 10-way power-adjustable driver's seat including power lumbar support
 - 4-way power-adjustable front passenger seat
 - Seat memory function
- ✓ 10-in. color Head-Up Display (HUD)
- ✓ Digital rearview mirror with HomeLink^{®38} universal transceiver
- ✓ Illuminated front doorsill metal scuff plate

Audio Multimedia

- ✓ 12.3-in. touchscreen with 11 JBL^{®24} speakers including subwoofer and amplifier
- ✓ Bird's Eye View Camera⁴³

HIGHLANDER HYBRID MODELS



Hybrid LE

Includes these top features

Mechanical/Performance

- ✓ 2.5-liter L4HV engine
- ✓ Electronically controlled Continuously Variable Transmission (ECVT)
- ✓ Available Electronic All-Wheel Drive (AWD)
- ✓ Available Trail Mode
- ✓ Up to 36 city/35 highway/36 combined est. mpg rating³

Exterior Features

- ✓ Color-keyed heated power outside mirrors with turn signal and blind spot warning³⁶ indicators and manual folding feature
- ✓ LED fog lights
- ✓ Grille shutters
- ✓ Height-adjustable power liftgate with jam protection
- ✓ 18-in. painted alloy wheels

Interior Features

- ✓ Leather-trimmed shift knob and steering wheel
- ✓ Smart Key System⁷ with Push Button Start with liftgate functions

Audio Multimedia

- ✓ Audio Plus includes:
 - 8.0-in. touchscreen and six speakers
 - Android Auto^{TM20} & Apple CarPlay^{®17} & Amazon Alexa²³ compatible
 - SiriusXM^{®21} with 3-month Platinum Plan trial subscription²²
- ✓ Connected Services trials,¹⁰ including Safety Connect,^{®11} Service Connect,¹³ Remote Connect¹⁴ and Wi-Fi Connect¹⁵

Safety Features

- ✓ Toyota Safety SenseTM 2.5+ (TSS 2.5+)²⁵
- ✓ Star Safety SystemTM
- ✓ Eight airbags³⁴
- ✓ Rear-seat reminder³⁵
- ✓ Blind Spot Monitor (BSM)³⁶ with Rear Cross-Traffic Alert (RCTA)³⁷



Hybrid XLE

Adds these top features

Exterior Features

- ✓ 18-in. machined-finish alloy wheels
- ✓ Power tilt/slide moonroof
- ✓ Roof rails

Interior Features

- ✓ Qi-compatible wireless smartphone charging⁴
- ✓ Auto-dimming rearview mirror with HomeLink^{®38} universal transceiver
- ✓ SofTex[®]-trimmed³⁹ front- and second-row seats
 - Heated front seats
 - 10-way power-adjustable driver's seat including power lumbar support
 - 4-way power-adjustable front passenger seat
- ✓ 7-in. color LCD Multi-Information Display (MID)
- ✓ Second-row sunshades

Packages/Options

- ✓ Premium Audio with Dynamic Navigation⁴⁰ with 3-year trial⁴¹
- ✓ Seating for eight with second-row bench seat and 60/40 split/fold seats



Bronze Edition

Adds these top features

Exterior Features:

- ✓ 18-in. bronze-colored alloy wheels
- ✓ Rain-sensing washer-linked variable intermittent windshield wipers
- ✓ Height-adjustable hands-free power liftgate with jam protection⁶

Interior Features:

- ✓ SofTex[®]-trimmed³⁹ front- and second-row seats with fabric inserts and bronze-colored stitching
 - Heated front seats
 - 10-way power-adjustable driver's seat including power lumbar support
 - 4-way power-adjustable front passenger seat
- ✓ Digital rearview mirror with HomeLink^{®38} universal transceiver
- ✓ Two 120V outlets (1500W shared)⁹ located on the bottom rear of center console and in the luggage area
- ✓ Floor⁴⁵ and cargo mats with bronze-colored stitching
- ✓ Illuminated front doorsill metal scuff plate with bronze finish
- ✓ Bronze-colored interior stitching

HIGHLANDER HYBRID MODELS



Hybrid Limited

Adds these top features to those offered on Hybrid XLE

Exterior Features

- ✓ Color-keyed heated power outside mirrors with puddle lights with integrated Highlander logo, turn signal, blind spot warning³⁶ indicators and memory feature
- ✓ High-output LED fog lights
- ✓ 20-in. chrome wheels
- ✓ Front grille in black paint with chrome-plated surround
- ✓ Height-adjustable hands-free power liftgate with jam protection⁶

Interior Features

- ✓ Leather-trimmed front- and second-row seats
 - Heated and ventilated front seats
 - 10-way power-adjustable driver's seat including power lumbar support
 - 4-way power-adjustable front passenger seat
 - Seat memory function
- ✓ Heated steering wheel
- ✓ Faux wood door trim and ornamental dash trim
- ✓ Front doorsill metal scuff plate
- ✓ Two 120V outlets (1500W shared)⁹ located on the bottom rear of center console and in the luggage area
- ✓ Ambient interior lighting

Audio Multimedia

- ✓ Premium Audio includes:
 - Dynamic Navigation⁴⁰ with 3-year trial⁴¹
 - 8.0-in. touchscreen with 11 JBL^{®24} speakers including subwoofer and amplifier
 - Android Auto^{™20} & Apple CarPlay^{®17} & Amazon Alexa²³ compatible
 - SiriusXM^{®21} with 3-month Platinum Plan trial subscription²²
- ✓ Connected Services trials,¹⁰ including Safety Connect,^{®11} Service Connect,¹³ Remote Connect,¹⁴ Wi-Fi Connect¹⁵ and Destination Assist¹⁶

Packages/Options

- ✓ 12.3-in. touchscreen with Bird's Eye View Camera⁴³



Hybrid Platinum

Adds these top features to those offered on Hybrid Limited

Exterior Features

- ✓ LED projector headlights with Adaptive Front-Lighting System (AFS),⁴⁴ auto leveling and LED-strip Daytime Running Lights (DRL)
- ✓ Front grille in black paint and chrome-plated surround with front lower bumper in silver finish
- ✓ Rear lower bumper accent
- ✓ Rear bumper scuff plate
- ✓ 20-in. alloy wheels
- ✓ Rain-sensing washer-linked variable intermittent windshield wipers
- ✓ Power Panoramic View Moonroof with sunshade and one-touch open/close with jam protection

Interior Features

- ✓ Leather-trimmed front- and second-row seats
 - Heated and ventilated front seats
 - Heated second-row captain's chairs
 - 10-way power-adjustable driver's seat including power lumbar support
 - 4-way power-adjustable front passenger seat
 - Seat memory function
- ✓ 10-in. color Head-Up Display (HUD)
- ✓ Illuminated front doorsill metal scuff plate

Audio Multimedia

- ✓ 12.3-in. touchscreen with 11 JBL^{®24} speakers including subwoofer and amplifier
- ✓ Bird's Eye View Camera⁴³

HIGHLANDER COLORS & TRIMS



Midnight Black Metallic



Blueprint



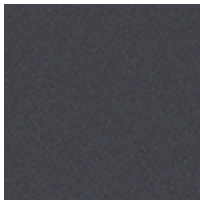
Moon Dust¹



Ruby Flare Pearl¹



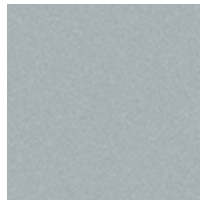
Opulent Amber



Magnetic Gray Metallic



Cement

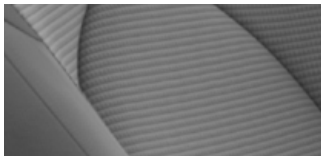


Celestial Silver Metallic



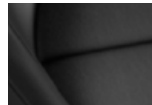
Wind Chill Pearl¹

L/LE fabric shown in Graphite



Black

XLE SofTex^{®39} trim shown in Graphite

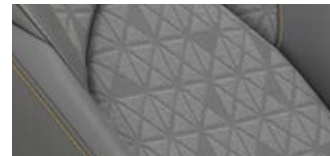


Black



Harvest Beige

Bronze Edition SofTex^{®39} trim shown in Graphite

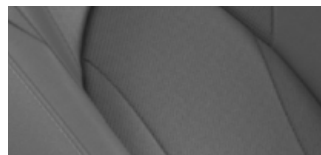


XSE mixed media trim shown in Black



Cockpit Red leather trim

Limited leather trim shown in Graphite



Black



Harvest Beige

Platinum leather trim shown in Graphite



Black



Harvest Beige



Glazed Caramel

HIGHLANDER WHEELS



L/LE 18-in. alloy wheel



XLE 18-in. machined-finish alloy wheel



Bronze Edition 18-in. bronze-finish alloy wheel



XSE 20-in. machined-finish alloy wheel



Limited 20-in. chrome wheel



Platinum 20-in. alloy wheel

HIGHLANDER ACCESSORIES

This is a great way to add extra personality to your Highlander. Not every accessory is available in your area, so for a complete list of accessories, go to toyota.com/highlander/accessories.



Roof rack cross bars⁴⁶



Running boards



Cargo net — envelope⁵



Quick-charge cable



Integrated dashcam⁶⁷



Rear bumper protector



Cargo liner⁵



All-weather floor liner⁴⁵



Illuminated doorsill

WARRANTIES

Every Toyota Car, Truck and SUV is built to exceptional standards. And that's not idle boasting. We back it up with these Limited Warranty Coverages:

Basic: 36 months/36,000 miles (all components other than normal wear and maintenance items).

Hybrid-Related Component Coverage: Hybrid-related components, including the battery control module, hybrid control module and inverter with converter, are covered for 8 years/100,000 miles. Refer to applicable *Warranty and Maintenance Guide* for details.

Hybrid Battery: HV battery is covered for 10 years or 150,000 miles, whichever comes first. Warranty coverage is subject to terms and conditions. Refer to applicable *Warranty and Maintenance Guide* for details.

Powertrain: 60 months/60,000 miles (engine, transmission/transaxle, drive system, seatbelts and airbags).

Rust-Through: 60 months/unlimited miles (corrosion perforation of sheet metal).

Emissions: Coverages vary under Federal and California regulations. Refer to applicable *Warranty and Maintenance Guide* for details.

Accessories: For Genuine Toyota Accessories purchased at the time of the new vehicle purchase, the Toyota Accessory Warranty coverage is in effect for 36 months/36,000 miles from the vehicle's in-service date, which is the same coverage as the Toyota New Vehicle Limited Warranty.

For Genuine Toyota Accessories purchased after the new vehicle purchase the coverage is 12 months, regardless of mileage, from the date the accessory was installed on the vehicle, or the remainder of any applicable new vehicle warranty, whichever provides greater coverage.

You may be eligible for transportation assistance if it's necessary that your vehicle be kept overnight for repairs covered under warranty. Please see your authorized Toyota dealership for further details.

For complete details about Toyota's warranties, please visit www.toyota.com, refer to the applicable *Warranty and Maintenance Guide* or see your Toyota dealer.

HIGHLANDER FEATURES⁴⁷

S = Standard O = Optional P = Available as part of a package

Exterior	L	LE	XLE	XSE	Limited	Platinum	Hybrid LE	Hybrid XLE	Hybrid Bronze Edition	Hybrid Limited	Hybrid Platinum
Smart Key System ⁷ on front doors and liftgate with Push Button Start, remote keyless entry system with lock, unlock and panic functions; remote illuminated entry	S										
Smart Key System ⁷ on front doors and liftgate with Push Button Start, remote keyless entry system with lock, unlock, panic and liftgate functions; remote illuminated entry		S	S	S	S	S	S	S	S	S	S
Color-keyed heated power outside mirrors with turn signal and manual folding feature	S										
Color-keyed heated power outside mirrors with turn signal and blind spot warning ³⁶ indicators, and manual folding feature		S	S	S			S	S	S		
Color-keyed heated power outside mirrors with puddle lights with integrated Highlander logo, turn signal, blind spot warning ³⁶ indicators, manual folding, and reverse tilt-down with memory feature					S	S				S	S
LED projector headlights with Daytime Running Lights (DRL)	S	S	S				S	S	S		
LED projector headlights with black accents and LED-strip Daytime Running Lights (DRL)				S							
LED projector headlights with LED-strip Daytime Running Lights (DRL)					S					S	
LED projector headlights with Adaptive Front-Lighting System (AFS) ⁴⁴ auto leveling and LED-strip Daytime Running Lights (DRL)						S					S
LED fog lights		S	S	S			S	S	S		
High-output LED fog lights					S	S				S	S
LED taillights	S	S	S	S	S	S	S	S	S	S	S
Washer-linked variable intermittent windshield wipers and intermittent rear wiper	S	S	S	S	S		S	S	S	S	
Rain-sensing washer-linked variable intermittent windshield wipers and intermittent rear wiper						S					S
Windshield wiper de-icer	S	S	S	S	S	S	S	S	S	S	S
Rear liftgate windshield defogger	S	S	S	S	S	S	S	S	S	S	S
Rear liftgate windshield washer and backup camera ⁴⁸ washer	S	S	S	S	S	S	S	S	S	S	S
High Solar Energy-Absorbing (HSEA) glass on front and rear side windows	S	S	S	S	S	S	S	S	S	S	S
Privacy glass on rear side, quarter and liftgate windows	S	S	S	S	S	S	S	S	S	S	S
Acoustic noise-reducing front side windows					S	S				S	S
18-in. painted alloy wheels and P235/65R18 tires	S	S					S				
18-in. machined-finish alloy wheels and P235/65R18 tires			S					S	S		
18-in. bronze-finish alloy wheels and P235/65R18 tires									S		
20-in. machined-face alloy wheels and P235/55R20 tires				S							
20-in. chrome wheels and P235/55R20 tires					S					S	
20-in. alloy wheels and P235/55R20 tires						S					S
Black-painted front grille with silver-painted surround	S	S	S				S	S	S		
Black mesh front grille with sporty front bumper and lower spoiler				S							
Black-painted front grille with chrome-plated surround					S					S	
Black-painted front grille with chrome-plated surround and front lower bumper in silver finish						S					S
Grille shutters							S	S	S	S	S
Rear lower bumper in black finish	S	S	S				S	S	S		
Rear lower bumper in dark gray metallic finish					S					S	
Rear lower bumper in gray metallic finish with chrome lower spoiler trim				S							
Rear lower bumper in silver finish						S					S
Color-keyed side rocker panels and lower molding	S	S	S		S	S	S	S	S	S	S
Color-keyed side rocker panels with chrome lower trim				S							
Color-keyed outside door handles	S	S	S	S	S	S	S	S	S	S	S
Rear spoiler with LED center high-mount stop light	S	S	S	S	S	S	S	S	S	S	S
A-pillar in black low-gloss film	S	S	S				S	S	S		
A-pillar in black high-gloss film				S	S	S				S	S
Power tilt/slide moonroof with sunshade and one-touch open/close with jam protection			S	S	S			S	S	S	
Power Panoramic View Moonroof with sunshade and one-touch open/close with jam protection						S					S
Height-adjustable power liftgate with jam protection		S	S	S			S	S			
Height-adjustable hands-free power liftgate with jam protection ⁶					S	S			S	S	S
Silver-finish roof rails ⁴⁶			S		S	S		S	S	S	S

See numbered footnotes in Disclosures section.

HIGHLANDER FEATURES

S = Standard O = Optional P = Available as part of a package

Exterior (continued)	L	LE	XLE	XSE	Limited	Platinum	Hybrid LE	Hybrid XLE	Hybrid Bronze Edition	Hybrid Limited	Hybrid Platinum
Black-finish roof rails ⁴⁶				S							
Front and rear mudguards	O	O	O	O	O	O	O	O	O	O	O
Rear bumper scuff plate						S					S
Twin-tip exhaust				S							
Interior											
Power windows with auto up/down in all positions and jam protection	S	S	S	S	S	S	S	S	S	S	S
Three-zone automatic climate control with air filter, separate second-row control panel, individual temperature settings for driver, front passenger and rear-seat passengers, and second- and third-row vents	S	S	S	S	S	S	S	S	S	S	S
Black interior door handles	S	S					S				
Chrome interior door handles			S	S	S	S		S	S	S	S
Power door locks with shift-linked automatic lock/unlock feature	S	S	S	S	S	S	S	S	S	S	S
Soft-touch roll-top center console (15L) with removable utility tray	S	S	S	S	S	S	S	S	S	S	S
Qi-compatible wireless smartphone charging ⁴ with charge indicator light			S	S	S	S		S	S	S	S
Soft-touch in-dash split-level shelf	S	S	S	S	S	S	S	S	S	S	S
Eight cup holders and four bottle holders	S	S	S	S	S	S	S	S	S	S	S
Dual sun visors with sliding function and illuminated vanity mirrors	S	S	S	S	S	S	S	S	S	S	S
Overhead console with conversation mirror, sunglasses storage and maplights	S	S	S	S	S	S	S	S	S	S	S
Day/night rearview mirror	S	S					S				
Auto-dimming rearview mirror with HomeLink ^{®38} universal transceiver			S	S	S			S	S	S	
Digital rearview mirror with HomeLink ^{®38} universal transceiver						S					S
Fabric-trimmed front- and second-row seats; 8-way power-adjustable driver's seat; 4-way manual-adjustable front passenger seat	S	S					S				
Softex [®] -trimmed ³⁹ front- and second-row seats; heated front seats; 10-way power-adjustable driver's seat including power lumbar support; 4-way power-adjustable front passenger seat			S	S				S	S		
Leather-trimmed front- and second-row seats; heated front seats; 10-way power-adjustable driver's seat including power lumbar support; 4-way power-adjustable front passenger seat				O							
Leather-trimmed front- and second-row seats; heated and ventilated front seats; 10-way power-adjustable driver's seat including power lumbar support; 4-way power-adjustable front passenger seat; seat memory function					S	S				S	S
8-passenger seating with 60/40 split, sliding and reclining fold-flat second-row bench seats; 60/40 split, fold-flat third-row seats with sliding headrests and recline function	S	S	O		O		S	O			
7-passenger seating with second-row fold-down captain's chairs and fold-down inboard armrests, adjustable headrests and two cup holders mounted on the floor; and 60/40 split, fold-flat third-row seats with sliding headrests and recline function			S	S	S	S		S	S	S	S
Heated second row						S					S
Second-row sunshades			S	S	S	S		S	S	S	S
Tilt/telescopic steering wheel with audio, Multi-Information Display (MID), Bluetooth ^{®49} hands-free phone, voice-command, Dynamic Radar Cruise Control (DRCC), ²⁷ Lane Departure Alert (LDA), ⁵⁰ Lane Steering Assist (LSA) and multimedia information controls	S										
Leather-trimmed shift knob and tilt/telescopic leather steering wheel with audio, Multi-Information Display (MID), Bluetooth ^{®49} hands-free phone, voice-command, Dynamic Radar Cruise Control (DRCC), ²⁷ Lane Departure Alert (LDA), ⁵⁰ Lane Steering Assist (LSA) and multimedia information controls		S	S	S			S	S	S		
Leather-trimmed shift knob and heated tilt/telescopic leather-trimmed steering wheel with audio, Multi-Information Display (MID), Bluetooth ^{®49} hands-free phone, voice command, Dynamic Radar Cruise Control (DRCC), ²⁷ Lane Departure Alert (LDA), ⁵⁰ Lane Steering Assist (LSA) and multimedia information controls					S	S				S	S
4.2-in. color LCD Multi-Information Display (MID) in meter cluster with odometer, current/average fuel economy, cruising range, average speed, AWD torque distribution (AWD models only), cruise control guide, audio status, hands-free incoming call notices, telephone information, Eco Driving Indicator, and energy monitor (HV models only)	S	S					S				

HIGHLANDER FEATURES

S = Standard O = Optional P = Available as part of a package

Interior (continued)	L	LE	XLE	XSE	Limited	Platinum	Hybrid LE	Hybrid XLE	Hybrid Bronze Edition	Hybrid Limited	Hybrid Platinum
7-in. color LCD Multi-Information Display (MID) in meter cluster with odometer, trip/average fuel economy, cruising range, average speed, AWD torque distribution (AWD models only), cruise control guide, audio status, hands-free incoming call notices, telephone information, Eco Driving Indicator, and energy monitor (HV models only)			S	S	S	S		S	S	S	S
10-in. color Head-Up Display (HUD) with speedometer and Road Sign Assist (RSA), ³¹ navigation ⁵¹ and Hybrid System Indicator (hybrid models only)						S					S
Backup camera ⁴⁸ with projected path	S	S	S	S			S	S	S		
Backup camera ⁴⁸ with dynamic gridlines					S					S	
Bird's Eye View Camera ⁴³ with dynamic gridlines — includes Perimeter Scan, 360-degree Overhead View in low-speed drive and reverse, and Curb View					O	S				O	S
Five USB ports ³² and two 12V outlets ³³	S	S	S	S	S	S	S	S	S	S	S
One 120V outlet ⁴² (100W) located on the bottom rear of the center console					S	S					
Two 120V outlets ⁹ (1500W shared) located on the bottom rear of center console and in the luggage area									S	S	S
Ambient interior lighting				S	S	S			S	S	S
Illuminated front doorsill metal scuff plate						S					S
Illuminated front doorsill metal scuff plate with bronze finish								S			
Painted door, console and dashboard trim	S	S	S				S	S	S		
Ornamental dash trim and faux wood door trim					S	S				S	S
Front doorsill metal scuff plate					S					S	
Cargo area tonneau cover					S	S				S	S
Overhead console with conversation mirror, sunglasses storage and maplights	S	S	S	S	S	S	S	S	S	S	S
Digital clock	S	S	S	S	S	S	S	S	S	S	S
Driver Easy Speak — utilizes microphone in overhead console to amplify the driver's voice and broadcast it through rear speakers			O	O	S	S		O		S	S

Audio Multimedia

Audio — includes 8.0-in. touchscreen, six speakers, Android Auto ^{TM20} & Apple CarPlay ^{®17} & Amazon Alexa ²³ compatible, USB media port, ³² four USB charge ports, ³² hands-free phone capability and music streaming ⁴⁹ via Bluetooth ^{®49} wireless technology, SiriusXM ^{®21} with 3-month Platinum Plan trial subscription ²² See toyota.com/audio-multimedia for details. Connected Services ¹⁰ — Safety Connect [®] with 1-year trial, ¹¹ Wi-Fi Connect with up to 2 GB within 3-month trial. ¹⁵ See toyota.com/connected-services for details.	S										
---	---	--	--	--	--	--	--	--	--	--	--

Audio Plus — includes 8.0-in. touchscreen, six speakers, USB media port, ³² four USB charge ports, ³² hands-free phone capability and music streaming ⁴⁹ via Bluetooth ^{®49} wireless technology, Android Auto ^{TM20} & Apple CarPlay ^{®17} & Amazon Alexa ²³ compatible, SiriusXM ^{®21} with 3-month Platinum Plan trial subscription ²² See toyota.com/audio-multimedia for details. Connected Services ¹⁰ — Safety Connect [®] with 1-year trial, ¹¹ Service Connect with 10-year trial, ¹³ Remote Connect with 1-year trial, ¹⁴ Wi-Fi Connect with up to 2 GB within 3-month trial. ¹⁵ See toyota.com/connected-services for details.		S	S	S			S	S	S		
--	--	---	---	---	--	--	---	---	---	--	--

Premium Audio, Dynamic Navigation ⁴⁰ with 3-year trial ⁴¹ — includes 8.0-in. touchscreen, six speakers, USB media port, ³² four USB charge ports, ³² hands-free phone capability and music streaming ⁴⁹ via Bluetooth ^{®49} wireless technology, Android Auto ^{TM20} & Apple CarPlay ^{®17} & Amazon Alexa ²³ compatible, SiriusXM ^{®21} with 3-month Platinum Plan trial subscription ²² See toyota.com/audio-multimedia for details. Connected Services ¹⁰ — Safety Connect [®] with 1-year trial, ¹¹ Service Connect with 10-year trial, ¹³ Remote Connect with 1-year trial, ¹⁴ Wi-Fi Connect with up to 2 GB within 3-month trial, ¹⁵ Destination Assist with 1-year trial. ¹⁶ See toyota.com/connected-services for details.			O					O			
---	--	--	---	--	--	--	--	---	--	--	--

HIGHLANDER FEATURES

S = Standard O = Optional P = Available as part of a package

Audio Multimedia (continued)	L	LE	XLE	XSE	Limited	Platinum	Hybrid LE	Hybrid XLE	Hybrid Bronze Edition	Hybrid Limited	Hybrid Platinum
------------------------------	---	----	-----	-----	---------	----------	-----------	------------	-----------------------	----------------	-----------------

Premium Audio, Dynamic Navigation ⁴⁰ with 3-year trial ⁴¹ — includes 8.0-in. touchscreen, 11 JBL ^{®24} speakers including subwoofer and amplifier, USB media port; ³² four USB charge ports; ³² hands-free phone capability and music streaming ⁴⁹ via Bluetooth ^{®49} wireless technology, Android Auto ^{™20} & Apple CarPlay ^{®17} & Amazon Alexa ²³ compatible, SiriusXM ^{®21} with 3-month Platinum Plan trial subscription; ²² See toyota.com/audio-multimedia for details. Connected Services ¹⁰ — Safety Connect [®] with 1-year trial, ¹¹ Service Connect with 10-year trial, ¹³ Remote Connect with 1-year trial, ¹⁴ Wi-Fi Connect with up to 2 GB within 3-month trial; ¹⁵ Destination Assist with 1-year trial; ¹⁶ See toyota.com/connected-services for details.					O	S					S
---	--	--	--	--	---	---	--	--	--	--	---

Premium Audio, Dynamic Navigation ⁴⁰ with 3-year trial ⁴¹ — includes 12.3-in. touchscreen, 11 JBL ^{®24} speakers including subwoofer and amplifier, USB media port; ³² four USB charge ports; ³² hands-free phone capability and music streaming ⁴⁹ via Bluetooth ^{®49} wireless technology, Android Auto ^{™20} & Apple CarPlay ^{®17} & Amazon Alexa ²³ compatible, SiriusXM ^{®21} with 3-month Platinum Plan trial subscription; ²² See toyota.com/audio-multimedia for details. Connected Services ¹⁰ — Safety Connect [®] with 1-year trial, ¹¹ Service Connect with 10-year trial, ¹³ Remote Connect with 1-year trial, ¹⁴ Wi-Fi Connect with up to 2 GB within 3-month trial; ¹⁵ Destination Assist with 1-year trial; ¹⁶ See toyota.com/connected-services for details.					O	S				O	S
--	--	--	--	--	---	---	--	--	--	---	---

Safety and Convenience

Toyota Safety Sense [™] 2.5+ (TSS 2.5+) ²⁵	S	S	S	S	S	S	S	S	S	S	S
--	---	---	---	---	---	---	---	---	---	---	---

STAR SAFETY SYSTEM Star Safety System [™] — includes Enhanced Vehicle Stability Control (VSC); ⁵² Traction Control (TRAC), Anti-lock Brake System (ABS), Electronic Brake-force Distribution (EBD), Brake Assist (BA) ⁵³ and Smart Stop Technology [®] (SST) ⁵⁴	S	S	S	S	S	S					
---	---	---	---	---	---	---	--	--	--	--	--

Star Safety System [™] — includes Electronically Controlled Braking (ECB), Vehicle Dynamics Integrated Management (VDIM); ⁵⁵ Enhanced Vehicle Stability Control (VSC); ⁵² Traction Control (TRAC), Anti-lock Brake System (ABS), Electronic Brake-force Distribution (EBD), Brake Assist (BA) ⁵³ and Smart Stop Technology [®] (SST) ⁵⁴							S	S	S	S	S
---	--	--	--	--	--	--	---	---	---	---	---

Eight airbags ³⁴ — driver airbag, front passenger airbag, driver knee airbag, front passenger seat cushion airbag, front side airbags, curtain shield airbags	S	S	S	S	S	S	S	S	S	S	S
--	---	---	---	---	---	---	---	---	---	---	---

Safety Connect ^{®11} — includes Emergency Assistance, Stolen Vehicle Locator; ⁵⁶ Roadside Assistance ¹² and Automatic Collision Notification. Available by subscription. Complimentary one-year trial subscription. ¹¹	S	S	S	S	S	S	S	S	S	S	S
--	---	---	---	---	---	---	---	---	---	---	---

3-point seatbelts for all seating positions; driver's-side Emergency Locking Retractor (ELR) and Automatic/Emergency Locking Retractor (ALR/ELR) on all passenger seatbelts	S	S	S	S	S	S	S	S	S	S	S
---	---	---	---	---	---	---	---	---	---	---	---

LATCH (Lower Anchors and Tethers for CHildren) includes lower anchors and tethers on outboard second-row seats and tether anchor on middle of second- and third-row seats	S	S	S	S	S	S	S	S	S	S	S
---	---	---	---	---	---	---	---	---	---	---	---

Child-protector rear door locks and power window lockout control	S	S	S	S	S	S	S	S	S	S	S
--	---	---	---	---	---	---	---	---	---	---	---

Driver and front passenger seatbelt warning	S	S	S	S	S	S	S	S	S	S	S
---	---	---	---	---	---	---	---	---	---	---	---

Rear passenger seatbelt reminder	S	S	S	S	S	S	S	S	S	S	S
----------------------------------	---	---	---	---	---	---	---	---	---	---	---

Rear-seat reminder ²⁵	S	S	S	S	S	S	S	S	S	S	S
----------------------------------	---	---	---	---	---	---	---	---	---	---	---

Adjustable front seatbelt shoulder anchors and driver and front passenger seatbelt pretensioners with force limiters	S	S	S	S	S	S	S	S	S	S	S
--	---	---	---	---	---	---	---	---	---	---	---

Downhill Assist Control (DAC) ⁵⁷	O	O	O	O	O	O					
---	---	---	---	---	---	---	--	--	--	--	--

Anti-theft system with engine immobilizer ⁵⁸	S										
---	---	--	--	--	--	--	--	--	--	--	--

Engine immobilizer ⁵⁸ alarm		S	S	S	S	S	S	S	S	S	S
--	--	---	---	---	---	---	---	---	---	---	---

Tire Pressure Monitor System (TPMS) ⁵⁹ (individual tires)	S	S	S	S	S	S	S	S	S	S	S
--	---	---	---	---	---	---	---	---	---	---	---

Snow Mode + Drive Mode Select (Eco, Normal, Sport)	S	S	S	S	S	S					
--	---	---	---	---	---	---	--	--	--	--	--

Snow Mode + Drive Mode Select (Eco, Normal, Sport) + Multi-Terrain Select (MTS) (Mud/Sand, Rock/Dirt, Normal)	O	O	O	O	O	O					
---	---	---	---	---	---	---	--	--	--	--	--

Hill Start Assist Control (HAC) ⁶⁰	S	S	S	S	S	S	S	S	S	S	S
---	---	---	---	---	---	---	---	---	---	---	---

Trail Mode							O	O	O	O	O
------------	--	--	--	--	--	--	---	---	---	---	---

Front and Rear Parking Assist with Automatic Braking (PA w/AB) ⁶¹					S	S				S	S
--	--	--	--	--	---	---	--	--	--	---	---

Dynamic Torque Vectoring AWD with Driveline Disconnect; Multi-Terrain Select (MTS) with dial				O	O	O					
--	--	--	--	---	---	---	--	--	--	--	--

Predictive Fuel-Efficient Drive ⁶²								O	O	S	S
---	--	--	--	--	--	--	--	---	---	---	---

HIGHLANDER SPECIFICATIONS

S = Standard O = Optional P = Available as part of a package

Mechanical/Performance	L	LE	XLE	XSE	Limited	Platinum	Hybrid LE	Hybrid XLE	Hybrid Bronze Edition	Hybrid Limited	Hybrid Platinum
ENGINE											
Gasoline engine — 3.5-liter V6 Double Overhead Cam (DOHC) 24-valve D-4S injection Atkinson-cycle-capable engine with Dual Variable Valve Timing with intelligence (VVT-i) and Stop and Start Engine System (S&S); ⁶³ 295 hp @ 6600 rpm, 263 lb.-ft. @ 4700 rpm	S	S	S	S	S	S					
Hybrid powertrain — 2.5-liter L4HV Double Overhead Cam (DOHC) 16-valve D-4S injection Atkinson-cycle engine with Dual VVT-iE (Variable Valve Timing-intelligent intake controlled by electric motor); combined net 243 hp, includes combustion engine with 186 hp @ 6000 rpm; 175 lb.-ft. @ 4400 rpm							S	S	S	S	S
EMISSION RATING											
Ultra Low Emission Vehicle 70 (ULEV 70)	S	S	S	S	S	S					
Super Ultra Low Emission Vehicle 30 (SULEV 30) ⁶⁴							S	S	S	S	S
ELECTRIC MOTORS											
Permanent magnet synchronous motors (two front, FWD)							S	S	S	S	S
Permanent magnet synchronous motors (two front, one rear, AWD)							O	O	O	O	O
TRACTION BATTERY											
Battery type: sealed Nickel-Metal Hydride (Ni-MH)							S	S	S	S	S
TRANSMISSION											
Direct Shift-8AT 8-speed Electronically Controlled automatic Transmission (ECT)	S	S	S	S	S	S					
Electronically controlled Continuously Variable Transmission (ECVT) with sequential shift mode							S	S	S	S	S
DRIVETRAIN											
Front-Wheel Drive (FWD)	S	S	S	S	S	S	S	S	S	S	S
All-Wheel Drive (AWD)	O	O	O								
Dynamic Torque Vectoring AWD					O	O	O				
Electronic On-Demand AWD system							O	O	O	O	O
BODY											
Reinforced unibody	S	S	S	S	S	S	S	S	S	S	S
SUSPENSION											
Independent MacPherson strut front suspension with stabilizer bar; trailing-wishbone suspension	S	S	S		S	S	S	S	S	S	S
Sport-tuned independent MacPherson strut front suspension with stabilizer bar; trailing-wishbone suspension				S							
STEERING											
Electric Power Steering (EPS); power-assisted rack-and-pinion	S	S	S	S	S	S	S	S	S	S	S
Turning radius (ft.)	18.7	18.7	18.7	18.7	18.7	18.7	18.7	18.7	18.7	18.7	18.7
Turning circle diameter (ft.)	37.4	37.4	37.4	37.4	37.4	37.4	37.4	37.4	37.4	37.4	37.4
BRAKES											
Power-assisted ventilated 13.3-in. front disc brakes; solid 13.3-in. rear disc brakes and Star Safety System™	S	S	S	S	S	S					
Power-assisted ventilated 13.3-in. front disc brakes; solid 13.3-in. rear disc brakes with Electronically Controlled Braking (ECB) system, integrated regenerative braking and Star Safety System™							S	S	S	S	S

HIGHLANDER SPECIFICATIONS

S = Standard O = Optional P = Available as part of a package

Dimensions	L	LE	XLE	XSE	Limited	Platinum	Hybrid LE	Hybrid XLE	Hybrid Bronze Edition	Hybrid Limited	Hybrid Platinum
EXTERIOR (in.)											
Overall length/width	194.9/76.0	194.9/76.0	194.9/76.0	197.4/76.0	194.9/76.0	194.9/76.0	194.9/76.0	194.9/76.0	194.9/76.0	194.9/76.0	194.9/76.0
Unloaded height (no antenna)	68.1	68.1	68.1	68.1	68.1	68.1	68.1	68.1	68.1	68.1	68.1
Wheelbase	112.2	112.2	112.2	112.2	112.2	112.2	112.2	112.2	112.2	112.2	112.2
Track (front/rear)	65.3/65.4	65.3/65.4	65.3/65.4	65.3/65.4	65.3/65.4	65.3/65.4	65.3/65.4	65.3/65.4	65.3/65.4	65.3/65.4	65.3/65.4
INTERIOR (front/second-row/third-row seats) (in.)											
Head room	41.2/39.4/36.1	41.2/39.4/36.1	39.6/39.4/36.1	39.6/39.4/36.1	39.6/39.4/36.1	38.4/37.1/36.1	41.2/39.4/36.1	39.6/39.4/36.1	39.6/39.4/36.1	39.6/39.4/36.1	38.4/37.1/36.1
Shoulder room (with shade)			59.0/58.4/55.0	59.0/58.4/55.0	59.0/58.4/55.0	59.0/58.4/55.0		59.0/58.4/55.0	59.0/58.4/55.0	59.0/58.4/55.0	59.0/58.4/55.0
Shoulder room (w/o shade)	59.0/58.7/55.0	59.0/58.7/55.0					59.0/58.7/55.0				
Hip room	57.2/57.0/45.6	57.2/57.0/45.6	57.2/57.0/45.6	57.2/57.0/45.6	57.2/57.0/45.6	57.2/57.0/45.6	57.2/57.0/45.6	57.2/57.0/45.6	57.2/57.0/45.6	57.2/57.0/45.6	57.2/57.0/45.6
Leg room	42.0/41.0/27.7	42.0/41.0/27.7	42.0/41.0/27.7	42.0/41.0/27.7	42.0/41.0/27.7	42.0/41.0/27.7	42.0/41.0/27.7	42.0/41.0/27.7	42.0/41.0/27.7	42.0/41.0/27.7	42.0/41.0/27.7
OFF-HIGHWAY											
Approach/departure angle (degrees)	18.1/23	18.1/23	18.1/23	16.9/21.1	18.1/23	18.1/23	18.1/22.7	18.1/22.7	18.1/22.7	18.1/22.7	18.1/22.7
Ramp breakover angle	16.7	16.7	16.7	16.7	16.7	16.7	16.7	16.7	16.7	16.7	16.7
Ground clearance (in.)	8	8	8	8	8	8	8	8	8	8	8
Weights/Capacities											
Curb weight (lb.) (standard seating config.)	4,145	4,145	4,195	4,205	4,260	4,260	4,330	4,365	4,365	4,430	4,430
Gross Vehicle Weight Rating (GVWR) (lb.) (standard seating config.)	5,830	5,830	5,830	5,830	5,830	5,830	5,960	5,960	5,960	5,960	5,960
EPA passenger volume (cu. ft.) without moonroof, first/second/third row	141.3	141.3					141.3				
EPA passenger volume (cu. ft.) with moonroof, first/second/third row			139.1	139.1	139.1			139.1	139.1	139.1	
EPA passenger volume (cu. ft.) with panoramic moonroof, first/second/third row						136.1					136.1
Cargo volume (cu. ft.) ⁵ behind front/second-row/third-row seats	84.3/48.4/16.0	84.3/48.4/16.0	84.3/48.4/16.0	84.3/48.4/16.0	84.3/48.4/16.0	84.3/48.4/16.0	84.3/48.4/16.0	84.3/48.4/16.0	84.3/48.4/16.0	84.3/48.4/16.0	84.3/48.4/16.0
Fuel tank (gal.)	17.9	17.9	17.9	17.9	17.9	17.9	17.1	17.1	17.1	17.1	17.1
Seating capacity (standard/optional)	8	8	7/8	7	7/8	7	8	7/8	7	7	7
TOWING											
Towing capacity (lb.) ²	5,000	5,000	5,000	5,000	5,000	5,000	3,500	3,500	3,500	3,500	3,500
Trailer-Sway Control (TSC) ⁶⁵	S	S	S	S	S	S	S	S	S	S	S
TIRES											
All-Season tires	S	S	S	S	S	S	S	S	S	S	S
Temporary spare tire	S	S	S	S	S	S	S	S	S	S	S

Mileage Estimates (mpg city/highway/combined)³

Hybrid FWD							36/35/36	36/35/36	36/35/36	36/35/36	36/35/36
V6 FWD	21/29/24	21/29/24	21/29/24	21/29/24	21/29/24	21/29/24					

Need final MPG estimates

DISCLOSURES

1. Extra-cost color. 2. Before towing, confirm your vehicle and trailer are compatible, hooked up and loaded properly and that you have any necessary additional equipment. Do not exceed any Weight Ratings and follow all instructions in your *Owner's Manual*. The maximum you can tow depends on base curb weight plus the total weight of any cargo, occupants, and added vehicle equipment. "Added vehicle equipment" includes additional standard/optional equipment and accessories added by the manufacturer, dealers, and/or vehicle owners. The only way to be certain of your vehicle's exact curb weight is to weigh your vehicle without passengers or cargo. [Calculated with the new SAE J2807 method.] Installation of a tow hitch receiver or other accessories located near the rear bumper or side-door kick sensors may require disabling or removing the kick sensor, and the sensor operation setting in your vehicle should be turned off. See *Owner's Manual* for limitations. 3. Projected EPA-estimated mpg rating 21 city/29 hwy/24 combined estimates for 2022 Highlander V6 models, and 36 city/35 hwy/36 combined estimates for 2022 Highlander Hybrid models, as determined by manufacturer. EPA estimates not available at time of posting. Use for comparison purposes only. Your mileage will vary for many reasons, including your vehicle's condition and how/where you drive. See www.fueleconomy.gov. 4. Qi wireless charging may not be compatible with all mobile phones, MP3/WMA players and like models. When using the wireless charging system, avoid placing metal objects between the wireless charger and the mobile device when charging is active. Doing so may cause metal objects to become hot and could cause burns. 5. Cargo and load capacity limited by weight and distribution. Always properly secure cargo and cargo area. 6. Water, weather, dirt, and other conditions may cause the hands-free power liftgate sensor to not operate properly. See *Owner's Manual* for limitations. 7. The Smart Key System may interfere with some pacemakers or cardiac defibrillators. If you have one of these medical devices, please talk to your doctor to see if you should deactivate this system. 8. EV Mode lets you operate solely on battery power at low speeds for short distances and in limited circumstances, such as in a parking garage. Different conditions may prevent or limit usage. See your *Owner's Manual* for limitations and details. 9. Rated for 1500 watts shared between both three-prong outlets. See *Owner's Manual* for additional limitations and details. 10. Connected Services depends on factors outside of Toyota's control, including an operative telematics device, a cellular connection, GPS signal, and the availability of a compatible wireless network, without which system functionality and availability may be limited or precluded, including access to response center and emergency support. Service may vary by vehicle and region. Subscription required after trial. Terms of Use apply. Data charges may apply. Apps and services subject to change at any time without notice. See toyota.com/connected-services for details. To learn about Toyota's Connected Services data collection, use, sharing and retention practices, please visit <https://www.toyota.com/privacyvts>. Stolen vehicle police report required to use Stolen Vehicle Locator. Connected Services by Toyota trials are at no extra cost. All trials begin on the original date of purchase or lease of a new vehicle, with the exception of Wi-Fi for which the trial begins at the time of activation. Paid subscription required after trial in order to continue accessing the respective services. Terms of Use apply. 11. Safety Connect® depends on factors outside of Toyota's control, including an operative telematics device, a cellular connection, GPS signal, and the availability of a compatible wireless network, without which system functionality and availability may be limited or precluded, including access to response center and emergency support. Stolen vehicle police report required to use Stolen Vehicle Locator. Some features may require the Toyota app. Registration required. Subscription required after trial. Service subject to change at any time without notice. Terms of Use apply. Data charges may apply. Service may vary by vehicle and region. See usage precautions and service limitations in *Owner's Manual* and at toyota.com/connected-services for additional details. To learn about Toyota's Connected Services data collection, use, sharing and retention practices, please visit <https://www.toyota.com/privacyvts/>. The Safety Connect® trial period is at no extra cost and begins on the original date of purchase or lease of a new vehicle. Paid subscription required after trial to access the service. 12. Requires adequate cellular coverage and GPS signal strength. May not work in all areas. Service may vary by vehicle and region. See Toyota Dealer for details and exclusions. 13. Information provided is based on the last time data was collected from the vehicle and is not real-time data. Service Connect depends on factors outside of Toyota's control, including an operative telematics device, a cellular connection, GPS signal, and the availability of a compatible wireless network, without which system functionality and availability may be limited or precluded. Service may vary by vehicle and region. Registration required. Subscription required after trial. Service subject to change at any time without notice. Terms of Use apply. Data charges may apply. See usage precautions and service limitations in *Owner's Manual* and at toyota.com/connected-services for additional details. To learn about Toyota's Connected Services data collection, use, sharing and retention practices, please visit <https://www.toyota.com/privacyvts/>. The Service Connect trial period is at no extra cost and begins on the original date of purchase or lease of a new vehicle. Subscription required after trial. Service Connect renewal will be included when Safety Connect®, Remote Connect or Destination Assist connected service renewal is selected. Service Connect is not renewable as a stand-alone service. 14. Use only if aware of circumstances surrounding vehicle and it is legal and safe to do so (e.g., do not remotely start engine if vehicle is in an enclosed space or vehicle is occupied by a child). Toyota Remote Connect depends on factors outside of Toyota's control, including an operative telematics device, a cellular connection, GPS signal, and the availability of a compatible wireless network, without which system functionality and availability may be limited or precluded. Service may vary by vehicle and region. Registration and Toyota app download required. Subscription required after trial. Terms of Use apply. Data charges may apply. Remote start/stop not available on manual transmission-equipped vehicles. Services subject to change at any time without notice. See usage precautions and service limitations in *Toyota Owner's Manual* and at <https://www.toyota.com/connected-services> for additional details. To learn about Toyota's Connected Services data collection, use, sharing and retention practices, please visit <https://www.toyota.com/privacyvts/>. The Toyota Remote Connect trial period is at no extra cost and begins on the original date of purchase or lease of a new vehicle. Paid subscription required after trial to access the service. Terms of Use apply. 15. Eligible vehicle and wireless service required. Wi-Fi Connect depends on factors outside of Toyota's control, including an operative telematics device, a cellular connection, GPS signal, and the availability of a compatible wireless network, without which system functionality and availability may be limited or precluded. Wi-Fi Connect coverage and service not available everywhere. Valid in the contiguous U.S. and Alaska. Do not drive distracted. Go to att.com/toyota for terms and conditions. Data usage and charges apply. Up to 5 devices can be supported using in-vehicle connectivity. Apps and services subject to change at any time without notice. The Wi-Fi Connect trial begins at the time of activation and expires when 2GB of data is used or when the 3-month period ends. Subscription required after trial. Terms and conditions apply. 16. Destination Assist depends on factors outside of Toyota's control, including an operative telematics device, a cellular connection, GPS signal, and the availability of a compatible wireless network, without which system functionality and availability may be limited or precluded. Use common sense when relying on this information. Service may vary by vehicle and region. Registration required. Subscription required after trial. Services subject to change at any time without notice. Terms of Use apply. Data charges may apply. See *Owner's Manual* and toyota.com/connected-services for additional limitations and details. To learn about Toyota's Connected Services data collection, use, sharing and retention practices, please visit <https://www.toyota.com/privacyvts/>. The Destination Assist trial period is at no extra cost and begins on the original date of purchase or lease of a new vehicle. Paid subscription required after trial to access the service. 17. Apps and services are subject to change at any time without notice. Data charges may apply. Apple CarPlay® functionality requires a compatible iPhone® connected with an approved data cable into the USB media port. Apple CarPlay® is a registered trademark of Apple Inc. 18. iPhone® is a registered trademark of Apple Inc. All rights reserved. 19. Android is a trademark of Google LLC. 20. Vehicle user interface is a product of Google and its terms and privacy statement apply. To use Android Auto on your audio display, you'll need an Android Auto compatible vehicle and Android phone. For phone compatibility visit: <https://www.android.com/auto/>. Requires compatible smartphone connected with an approved data cable into the USB media port, and data plan rates apply. Apps and services vary by phone carrier and are subject to change at any time without notice. Android, Android Auto and Waze are trademarks of Google. 21. Trial length and service availability may vary by model, model year or trim. Service will automatically stop at the end of your trial subscription period unless you decide to continue service. If you do not wish to enjoy your trial, you can cancel by calling the number below. All SiriusXM services require a subscription, each sold separately by SiriusXM after the trial period. **Service subject to the SiriusXM Customer Agreement and Privacy Policy; visit www.siriusxm.com to see complete terms and how to cancel which includes calling 1-866-635-2349.** Some services and features are subject to device capabilities and location availability. All fees, content and features are subject to change. SiriusXM, Pandora and all related logos are trademarks of Sirius XM Radio Inc. and its respective subsidiaries. 22. SiriusXM trial length and service availability may vary by model, model year or trim. 23. Amazon, Alexa and all related marks are trademarks of Amazon.com, Inc. or its affiliates. Certain functions require adequate signal strength and/or smartphone technology/connectivity. Not all Amazon Alexa functionality is available for in-vehicle use. See applicable app for details. Download of the Toyota app and Toyota+Alexa app are both required to begin in-vehicle use of Alexa. Data charges may apply for certain functions. Apps and services subject to change at any time without notice. To learn more, go to <https://www.toyota.com/audio-multimedia>. To learn more about Toyota's data collection, use, sharing and retention practices, please visit <https://www.toyota.com/privacyvts/>. 24. JBL® is a registered trademark of Harman International Industries, Inc. 25. Toyota Safety Sense™ effectiveness is dependent on many factors including road, weather and vehicle conditions. Drivers are responsible for their own safe driving. Always pay attention to your surroundings and drive safely. See *Owner's Manual* for additional limitations and details. 26. The Pre-Collision System (PCS) with Pedestrian Detection (PD) is designed to determine if impact is imminent and help reduce impact speed and damage in certain frontal collisions involving a vehicle, a pedestrian or a bicyclist. PCS w/PD is not a substitute for safe and attentive driving. System effectiveness depends on many factors, such as speed, size and position of pedestrian or bicyclist and weather, light and road conditions. See *Owner's Manual* for additional limitations and details. 27. Full-Speed Range Dynamic Radar Cruise Control (DRCC) is designed to assist the driver and is not a substitute for safe and attentive driving practices. System effectiveness is dependent on many factors including road, weather and traffic conditions. Vehicles with manual transmission have regular DRCC. See *Owner's Manual* for additional limitations and details. 28. Lane Departure Alert with Steering Assist is designed to read visible lane markers under certain conditions. It provides a visual and audible alert and slight steering force when lane departure is detected. It is not a collision-avoidance system or a substitute for safe and attentive driving. Effectiveness is dependent on many factors including road, weather and vehicle conditions. See *Owner's Manual* for additional limitations and details. 29. Automatic High Beams operate at speeds above 25 mph. Factors such as a dirty windshield, weather, lighting and terrain limit effectiveness, requiring the driver to manually operate the high beams. See *Owner's Manual* for additional limitations and details. 30. Lane Tracing Assist (LTA) is designed to read visible lane markers and detect other vehicles under certain conditions. It is only operational when DRCC is engaged. See *Owner's Manual* for additional limitations and details. 31. Do not rely exclusively on Road Sign Assist (RSA). RSA is a driver support system that utilizes the vehicle's forward-facing camera and navigation system (when data is available) to recognize certain road signs and provide information to the driver via the multi-information display and/or Head-Up Display. Effectiveness is dependent on road, weather, vehicle and sign conditions. Use common sense when using RSA and do not drive distracted. See *Owner's Manual* for additional limitations and details. 32. May not be compatible with all mobile phones, MP3/WMA players and like models. 33. Rated for 100 watts shared between both three-prong outlets. See *Owner's Manual* for additional limitations and details. 34. Airbag systems are Supplemental Restraint Systems and are designed to inflate only under certain conditions and in certain types of severe collisions. To decrease the risk of injury from an inflating airbag, always wear seatbelts and sit upright in the middle of the seat as far back as possible. Do not put objects in front of an airbag or around the seatback. Do not use a rearward-facing child seat in any front passenger seat. See *Owner's Manual* for additional limitations and details. 35. The Rear-Seat Reminder does not sense objects in the rear seat. The Rear-Seat Reminder is designed to recognize a unique rear-door opening pattern that may be consistent with an object being placed in the rear seating area. See *Owner's Manual* for additional details. 36. Do not rely exclusively on the Blind Spot Monitor. Always look over your shoulder and use your turn signal. There are limitations to the function, detection and range of the monitor. See *Owner's Manual* for additional

DISCLOSURES

limitations and details. **37.** Do not rely exclusively on the Rear Cross-Traffic Alert system. Always look over your shoulder and use your mirrors to confirm rear clearance. There are limitations to the function, detection and range of the system. See *Owner's Manual* for additional limitations and details. **38.** HomeLink® and the HomeLink® house icon are registered trademarks of Gentex Corporation. **39.** SofTex® is a registered trademark of Toyota Motor Sales, U.S.A., Inc. **40.** Dynamic Navigation depends on factors outside of Toyota's control, including an operative telematics device, a cellular connection, GPS signal, and the availability of a compatible wireless network, without which system functionality and availability may be limited or precluded. Services not available in every city or roadway. Use common sense when relying on information provided. Service may vary by vehicle and region. Registration is required. Subscription required after trial. Terms of Use apply. Data charges may apply. See *Owner's Manual* and <https://www.toyota.com/connected-services> for additional limitations and details. To learn about Toyota's Connected Services data collection, use, sharing and retention practices, please visit <https://www.toyota.com/privacyvts/>. **41.** The Dynamic Navigation trial period is at no extra cost and begins on the original date of purchase or lease of a new vehicle. Paid subscription required after trial to access the service. **42.** Rated for 100 watts for a single three-prong outlet. See *Owner's Manual* for additional limitations and details. **43.** The Bird's Eye View Camera does not provide a comprehensive view of the area surrounding the vehicle and you should also look around the vehicle, using mirrors to confirm surrounding clearance. Environmental conditions may limit effectiveness and view may become obscured. See *Owner's Manual* for additional limitations and details. **44.** The Adaptive Front-Lighting System helps improve night vision. Situations such as a dirty windshield, rapidly changing light conditions or hilly terrain may limit effectiveness, requiring the driver to manually turn off the system. See *Owner's Manual* for additional limitations and details. **45.** This floor mat/floor liner was designed specifically for use in your model and model year vehicle and SHOULD NOT be used in any other vehicle. To avoid potential interference with pedal operation, each mat/liner must be secured with its fasteners. Do not install a floor mat/floor liner on top of an existing floor mat/floor liner. **46.** Do not overload your vehicle. See *Owner's Manual* for weight limits and restrictions. **47.** Toyota strives to build vehicles to match customer interest and thus they typically are built with popular options and option packages. Not all options/packages are available separately and some may not be available in all regions of the country. If you would prefer a vehicle with no or different options, contact your dealer to check for current availability or the possibility of placing a special order. Color(s) depicted may vary based on multiple factors, including ambient lighting and the format in which it is being viewed (e.g., computer, mobile device or print). **48.** The backup camera does not provide a comprehensive view of the rear area of the vehicle and you should also look around the vehicle, using mirrors to confirm rearward clearance. Environmental conditions may limit effectiveness and view may become obscured. See *Owner's Manual* for additional limitations and details. **49.** The Bluetooth® word mark and logos are registered trademarks owned by Bluetooth SIG, Inc., and any use of such marks by Toyota is under license. A compatible Bluetooth®-enabled phone must first be paired. Phone performance depends on software, coverage and carrier. **50.** Lane Departure Alert is designed to read visible lane markers under certain conditions, and provide visual and audible alerts when lane departure is detected. It is not a collision-avoidance system or a substitute for safe and attentive driving. Effectiveness is dependent on many factors including road, weather and vehicle conditions. See *Owner's Manual* for additional limitations and details. **51.** Be sure to obey traffic regulations and maintain awareness of road and traffic conditions at all times. Functionality, availability and accuracy of information provided by the system depends on many factors and service may not be available in every location. Use common sense when relying on information provided. Apps/services vary by phone/carrier. Select apps use large amounts of data; you are responsible for charges. Apps and services subject to change at any time without notice. See [toyota.com/connected-services](https://www.toyota.com/connected-services) for details. Services and programming subject to change. Updates may be available from your dealer at an additional cost. See *Owner's Manual* for additional limitations and details. **52.** Vehicle Stability Control is an electronic system designed to help the driver maintain vehicle control under adverse conditions. It is not a substitute for safe and attentive driving practices. Factors including speed, road conditions, weather and driver steering input can all affect whether VSC will be effective in preventing a loss of control. See *Owner's Manual* for additional limitations and details. **53.** Brake Assist is designed to help the driver take advantage of ABS and is not a substitute for safe driving practices. Braking effectiveness also depends on proper vehicle maintenance, tire and road conditions. See *Owner's Manual* for additional limitations and details. **54.** Smart Stop Technology® operates only in the event of certain contemporaneous brake and accelerator pedal applications. When engaged, the system will reduce power to help the brakes bring the vehicle to a stop. Factors including speed, road conditions and driver input can all impact stopping distance. Smart Stop Technology® is not a substitute for safe and attentive driving and does not guarantee instant stopping. See *Owner's Manual* for additional limitations and details. **55.** Vehicle Dynamics Integrated Management (VDIM) is an electronic system designed to help the driver maintain vehicle control under adverse conditions. It is not a substitute for safe and attentive driving practices. Factors including speed, road conditions, weather and driver steering input can all affect whether VDIM will be effective in preventing a loss of control. See *Owner's Manual* for additional limitations and details. **56.** Building and/or parking structures may limit system effectiveness. Stolen vehicle police report required to use Stolen Vehicle Locator. For additional assistance contact the Toyota Customer Experience Center at 1-800-331-4331. **57.** Downhill Assist Control is designed to help driver maintain vehicle control and speed on steep, downhill descents and is not a substitute for safe driving judgment and practices. Factors including speed, grade, surface conditions and driver input can affect the DAC's ability to prevent loss of control. See *Owner's Manual* for additional limitations and details. **58.** The engine immobilizer is a state-of-the-art anti-theft system that is initiated when you insert your key into the ignition switch or bring a Smart Key fob into the vehicle. The engine will only start if the code in the transponder chip inside the key/fob matches the code in the vehicle's immobilizer. The transponder chip is embedded in the key/fob and can be costly to replace. If you lose a key or fob, your Toyota dealer can help or go to www.alo.org to find a qualified locksmith in your area who can perform high-security key service. **59.** The Tire Pressure Monitor System alerts the driver when tire pressure is critically low. For optimal tire wear and performance, tire pressure should be checked regularly with a gauge; do not rely solely on the monitor system. See *Owner's Manual* for additional limitations and details. **60.** Hill Start Assist Control is designed to help minimize backward rolling on steep ascents. It is not a substitute for safe driving judgment and practices. Factors including speed, grade, surface conditions and driver input can all affect whether HAC will be effective in preventing a loss of control. See *Owner's Manual* for additional limitations and details. **61.** At speeds of 9 mph or less, Front and Rear Parking Assist with Automatic Braking (PA w/AB) is designed to assist drivers in avoiding potential collisions with nearby static objects when the vehicle is in Drive or Reverse and approaching crossing vehicles when the vehicle is in Reverse. Do not overly rely on PA w/AB. Always look around outside the vehicle and use mirrors to confirm clearance. Certain vehicle and environmental factors, including an object or vehicle's shape, size and composition, may affect the system's effectiveness. See *Owner's Manual* for additional limitations and details. **62.** Predictive Fuel-Efficient Drive systems require a destination entry in the navigation system for use. See *Owner's Manual* for details. **63.** Before towing, confirm Stop and Start Engine System is disengaged (V6 gas models only). **64.** Meets Tier-2/Bin-3 Federal emissions standard. **65.** Trailer-Sway Control (TSC) is an electronic system designed to help the driver maintain vehicle control under adverse conditions. It is not a substitute for safe driving practices. Factors including speed, road conditions, weather and driver steering input can all affect whether TSC will be effective in preventing a loss of control. See *Owner's Manual* for additional limitations and details. **66.** Google is a trademark of Google LLC. **67.** Dashcam may not record under certain conditions. Always respect the privacy rights of others. See your dashcam *Owner's Manual* for details.

Toyota strives to build vehicles to match customer interest and thus they typically are built with popular options and option packages. Not all options/packages are available separately and some may not be available in all regions of the country. See toyota.com for information about options/packages commonly available in your area. If you would prefer a vehicle without any or with different options, contact your dealer to check for current availability or the possibility of placing a special order.

Color(s) depicted may vary based on multiple factors, including ambient lighting and the format in which it is being viewed (e.g., computer, mobile device or print).

Toyota Highlander is designed to meet most off-road driving requirements. Abusive use may result in bodily harm or damage. Toyota encourages responsible operation to protect you, your vehicle and the environment. Seatbelts should be worn at all times. Please do not allow passengers to ride in the cargo area. Towing hitch receivers/ball mount kits are not intended to provide crash protection.

For details on vehicle specifications, standard features and available equipment in your area, contact your Toyota dealer. A vehicle with particular equipment may not be available at the dealership. Ask your Toyota dealer to help locate a specifically equipped vehicle.

All information presented herein is based on data available at the time of posting, is subject to change without notice and pertains specifically to mainland U.S.A. vehicles only. Vehicles shown may be prototypes, shown using visual effects and/or shown with options. Actual models may vary.



For Toyota Mobility program details, go to www.toyota.com/mobility or call the Toyota Brand Engagement Center at 1-800-331-4331