



**TOYOTA**

2022 Avalon

2022 AVALON

# Let the journey inspire you.

From here on out, every mile is what you make of it. Follow your aspirations in the 2022 Toyota Avalon, and never look back. Its low, wide stance and flowing roofline give it a sleek silhouette, while strong character lines add definition to its shape. It's a new level of refinement, and it's ready to face tomorrow head-on.



Touring shown in Wind Chill Pearl<sup>1</sup> with available Advanced Safety Package. Bottom left: Touring interior shown in Black SofTex<sup>2</sup> and Ultrasuede<sup>3</sup> trim. Bottom right: Limited Hybrid shown in Opulent Amber with available Advanced Safety Package.



See numbered footnotes in Disclosures section.

PERFORMANCE

# Purpose meets performance.

By taking advantage of the Toyota New Global Architecture (TNGA) platform, Avalon delivers a higher level of both handling and ride comfort. And with the platform taking up less room underneath, it opens up Avalon's cabin to give it the exceptional rear shoulder, knee and head room you've come to expect from Toyota's flagship sedan.

## Aerodynamics

Avalon features tangential vents on the sides of its front bumper, an available rear spoiler, an available rear diffuser and even underbody panels to help shave its coefficient of drag to 0.27, increase fuel efficiency and improve vehicle quietness.

## Adaptive Variable Suspension

Avalon Touring's Adaptive Variable Suspension (AVS) provides virtually instantaneous damping adjustments to help maximize handling. This is furthered in Sport Mode with a higher range of damping force — for more stability on every road.

## 3.5L V6 engine

Avalon's 3.5-liter V6 unleashes 301 hp with efficiency in mind. Smart engineering, like D-4S direct injection and a Direct Shift 8-speed transmission, gives Avalon an EPA-estimated rating of up to 32 hwy mpg<sup>4</sup>







XSE Hybrid Nightshade shown in Midnight Black Metallic. Upper and lower right: Touring shown in Wind Chill Pearl.<sup>1</sup>



### Avalon Hybrid Nightshade Edition

Featuring unique black wheels, door handles and badging to match, Avalon Hybrid Nightshade Edition's bold style will energize your nighttime adventures. And there are no limits to where the night will go, thanks to its reliable hybrid efficiency.

### EXTERIOR

# Designed to move you.

The sophisticated styling of Avalon artfully blends function and form. Every crease, every angle, every line is designed to make you feel something and push you to forge your own path. Take advantage of a powerful full-size sedan and do more than stand out from the crowd — lead the way.

### 19-in. sport wheels

Take on corners in style. Avalon Touring's machined and gloss-black-finished 19-in. wheels have been manufactured with depth and precision to complement its distinctive design.

### Quad exhaust tips

Beneath the rear bumper, a gloss-black rear diffuser sits between the dual exhausts, further adding to Avalon Touring's aggressive look.

See numbered footnotes in Disclosures section.



### Avalon Limited interior

Authentic materials and available Cognac leather-trimmed seat surfaces welcome you inside the refined interior. Even road noise has been suppressed, for a quiet cabin.

### Heated steering wheel

With the press of a button, Avalon's available heated steering wheel warms up to help you withstand the cold.

### Real wood trim

Adding more warmth and luxury to Avalon Limited is real wood trim. Running across the dash and door panels, the wood accents highlight the quality that goes into this Toyota flagship vehicle.

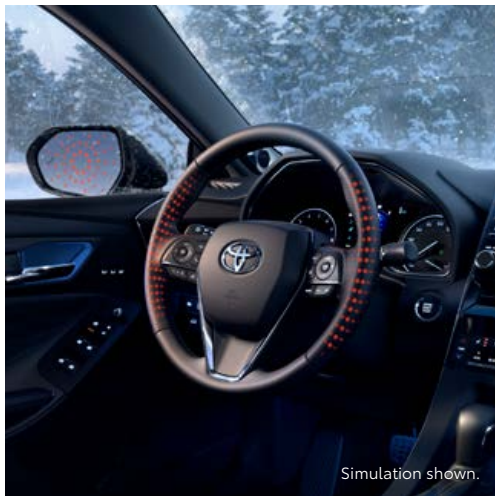
### Floating center stack

The large center instrument panel gives Avalon's interior a distinctive look. The 9-in. touchscreen display stands out and appears as if it were floating in front of the dash.

## INTERIOR

# Daring in every detail.

The craftsmanship inside Avalon will make you never want to leave. Its clean, modern design flows effortlessly from the dash to the doors, while premium materials raise its level of luxury. And whether sitting in the front or rear, you'll appreciate the comfort and dedication that goes into every detail.





XSE Hybrid Nightshade shown in Midnight Black Metallic. Prototype vehicle shown with options using visual effects.

HYBRID

# Ambition knows no limits.

Avalon Hybrid is smarter without compromise. Its 2.5-liter Dynamic Force Engine and hybrid system seamlessly work together to help maximize fuel efficiency. With an impressive EPA-estimated mpg of up to 44 hwy,<sup>4</sup> Avalon Hybrid is ready to go the distance.

**44**  
EPA-est. mpg<sup>4</sup>



## Avalon Hybrid interior

Authentic materials and available Cognac leather trim welcome you inside the refined interior. Even road noise has been suppressed, for a quiet cabin during every drive.

See numbered footnotes in Disclosures section.



# Amplify your drive.

Take advantage of smarter and convenient technologies designed to simplify your everyday life. From a suite of services that are there for you 24/7 to an immersive audio multimedia system, you can stay connected to your world.



## Connected Services

Our available suite of Connected Services provides added convenience and peace of mind<sup>5</sup>

- ✓ **Safety Connect<sup>®</sup>**  
Emergency SOS assistance and 24/7 Toyota Roadside Assistance<sup>6,7</sup>
- ✓ **Service Connect**  
Get personalized maintenance updates and vehicle health reports<sup>8</sup>
- ✓ **Remote Connect**  
Start, lock/unlock your doors and more, using your compatible smart device<sup>9</sup>
- ✓ **Wi-Fi Connect**  
Turn your Toyota into a hotspot with 4G connectivity<sup>10</sup>
- ✓ **Destination Assist**  
24/7 live agent assistance to locate your next destination<sup>11</sup>

To view included trial details, please visit [toyota.com/connected-services](http://toyota.com/connected-services).

## Audio Multimedia

Make every drive more personal. By utilizing your vehicle's touchscreen display and audio multimedia capabilities, you'll always have access to what you want. Whether it's listening to your favorite playlist or finding the most scenic route to your destination, you'll enjoy the latest in connectivity and technologies that are all about you.



## Apple CarPlay<sup>®</sup>

Bring along a familiar face. With Apple CarPlay<sup>®12</sup> compatibility, you can use your compatible iPhone<sup>®13</sup> with the audio multimedia system to get directions, make calls, send and receive messages, and listen to music — all while staying focused on your commute.



## Android Auto<sup>™</sup>

Stay connected on the road. By pairing your compatible Android<sup>™14</sup> phone with the audio multimedia system, Android Auto<sup>™15</sup> lets you access your Google Assistant, get real-time traffic alerts, make and receive phone calls, listen to your favorite soundtrack and more.



## SiriusXM<sup>®</sup> w/3-month Platinum Plan trial subscription

SiriusXM<sup>®16</sup> has premium entertainment that you won't hear anywhere else. With the Platinum Plan, you get 350+ channels, including 165+ channels in your vehicle, to enjoy ad-free music, plus sports, news, talk, comedy and more.<sup>17</sup>



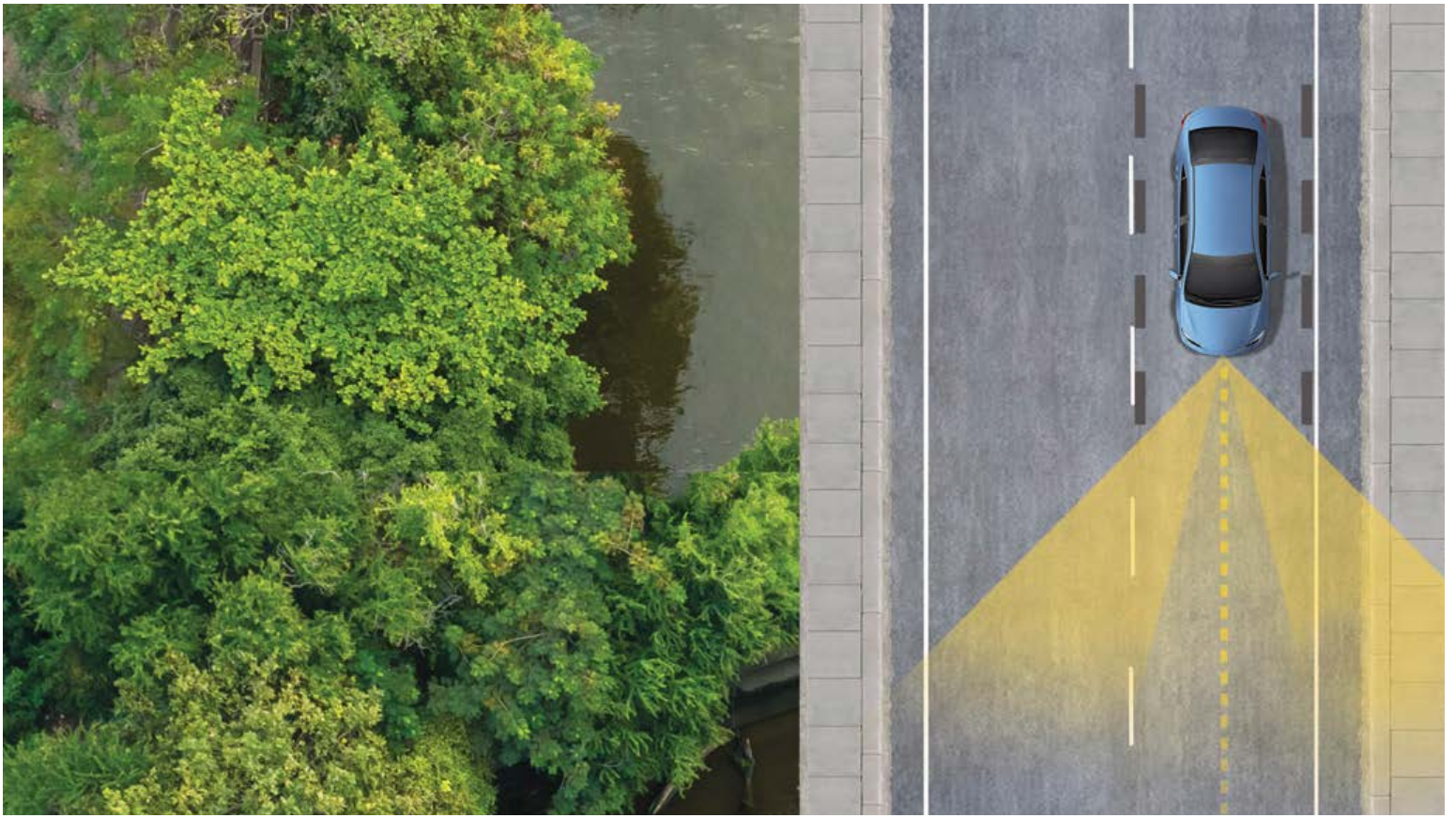
## Amazon Alexa

Almost anywhere the road takes you, Amazon Alexa<sup>®18</sup> connectivity follows. With a smartphone connection and the Toyota+Alexa app, all you have to do is ask Alexa to play music, listen to audiobooks, hear the news, check weather, control smart-home devices and more.



## JBL<sup>®</sup>

Feel the difference and hear the truth. Designed specifically for Toyota, JBL<sup>®19</sup> finely tunes each speaker to the interior of the vehicle. Just turn up the volume to hear the crisp, rich, vibrant sound come through.



*TOYOTA SAFETY SENSE™ 2.5+ (TSS 2.5+)*

# Peace of mind comes standard.

Toyota Safety Sense™ 2.5+ (TSS 2.5+)²⁰ is a bundle of active safety features included on many new Toyota vehicles at no additional cost. These innovative features were designed to help protect you and your passengers from harm.



Pre-Collision System with Pedestrian Detection<sup>21</sup>



Full-Speed Range Dynamic Radar Cruise Control<sup>22</sup>



Lane Departure Alert with Steering Assist<sup>23</sup>



Automatic High Beams<sup>24</sup>



Lane Tracing Assist<sup>25</sup>



Road Sign Assist<sup>26</sup>



## AVALON MODELS



XLE

### Mechanical/Performance

- ✓ 3.5L V6 with 301 hp
- ✓ 8-speed Electronically Controlled automatic Transmission with intelligence (ECT-i) with sequential shift mode
- ✓ Normal, Eco and Sport drive modes
- ✓ Front-Wheel Drive (FWD)
- ✓ 22 city/32 highway/26 combined est. mpg<sup>4</sup>

### Exterior Features

- ✓ LED reflector headlights and LED DRL with auto on/off feature
- ✓ LED taillights
- ✓ Front chrome grille surround with dark gray insert
- ✓ Color-keyed heated power outside mirrors with turn signal and blind spot warning<sup>27</sup> indicators
- ✓ Acoustic noise-reducing windshield and driver and front passenger-side windows
- ✓ Dual exhaust with chrome tips
- ✓ 17-in. silver-painted alloy wheels

### Interior Features

- ✓ Dual zone automatic climate control
- ✓ SofTex<sup>®</sup>-trimmed<sup>2</sup> seats
  - 8-way power-adjustable driver's seat with 2-way power lumbar support
  - 8-way adjustable passenger seats
  - Heated front seats
  - 60/40 split, folding rear seats
- ✓ 7-in. TFT Multi-Information Display (MID)
- ✓ Leather-trimmed steering wheel
- ✓ Smart Key System<sup>28</sup> with Push Button Start
- ✓ Hydrographic interior trim
- ✓ One USB media port, two USB-A charge ports and two USB-C charge ports<sup>29</sup>

### Audio Multimedia

- ✓ Audio Plus includes:
  - 9-in. touchscreen and eight speakers
  - Android Auto<sup>TM15</sup> & Apple CarPlay<sup>®12</sup> compatible
  - SiriusXM<sup>®16</sup> with 3-month Platinum Plan trial subscription<sup>17</sup>

- ✓ Connected Services<sup>5</sup> Safety Connect<sup>®</sup> trial<sup>7</sup>

### Safety Features

- ✓ Toyota Safety Sense<sup>TM</sup> 2.5+ (TSS 2.5+)<sup>20</sup>
- ✓ Star Safety System<sup>TM</sup>
- ✓ Ten airbags<sup>30</sup>
- ✓ Blind Spot Monitor (BSM)<sup>27</sup> with Rear Cross-Traffic Alert (RCTA)<sup>31</sup>

### Packages/Options

- ✓ Premium Audio includes:
  - Dynamic Navigation<sup>32</sup> with 3-year trial<sup>33</sup>
  - 14 JBL<sup>®19</sup> speakers including subwoofer and amplifier
- ✓ Moonroof Package includes:
  - Power tilt/slide moonroof with sliding sunshade
  - Qi-compatible wireless charging system<sup>34</sup>



Touring

Adds to or replaces features offered on XLE

### Mechanical/Performance

- ✓ 3.5L V6 with 301 hp
- ✓ Normal, Eco, Sport and Sport+ drive modes
- ✓ Front-Wheel Drive (FWD)
- ✓ Sport-tuned suspension
- ✓ Adaptive Variable Suspension (AVS)
- ✓ 22 city/31 highway/25 combined est. mpg<sup>4</sup>

### Exterior Features

- ✓ LED headlights with smoked chrome bezels, on/off feature and Adaptive Cornering Lights
- ✓ LED taillights with dynamic turn signals
- ✓ Front piano-black grille with sport mesh insert
- ✓ Gloss-black heated power outside mirrors with memory feature and driver's-side auto-dimming
- ✓ Power tilt/slide moonroof with sliding sunshade
- ✓ Gloss-black rear spoiler
- ✓ Dual exhaust with quad chrome tips
- ✓ Intake Sound Generator (ISG)
- ✓ 19-in. black-painted machined-finish alloy wheels

### Interior Features

- ✓ SofTex<sup>®</sup>-trimmed<sup>2</sup> seats with perforation and Ultrasuede<sup>™3</sup> trim
  - 8-way power-adjustable driver's seat with 4-way power lumbar support
  - 8-way adjustable passenger seats with 4-way power lumbar support
  - Heated and ventilated front seats
  - Heated rear seats
- ✓ Leather-trimmed heated steering wheel with paddle shifters
- ✓ 10-in. color Head-Up Display (HUD)
- ✓ Aluminum pedal covers
- ✓ Genuine aluminum interior trim
- ✓ Active Noise Control (ANC)
- ✓ Engine Sound Enhancement (ESE)
- ✓ HomeLink<sup>®35</sup> universal transceiver
- ✓ Qi-compatible wireless charging system<sup>34</sup>

### Audio Multimedia

- ✓ Premium Audio includes:
  - 9-in. touchscreen and 14 JBL<sup>®19</sup> speakers including subwoofer and amplifier
  - Dynamic Navigation<sup>32</sup> with 3-year trial<sup>33</sup>
  - Android Auto<sup>TM15</sup> & Apple CarPlay<sup>®12</sup> compatible
  - SiriusXM<sup>®16</sup> with 3-month Platinum Plan trial subscription<sup>17</sup>
- ✓ Connected Services<sup>5</sup> Safety Connect<sup>®</sup> trial<sup>6</sup>

### Safety Features

- ✓ Toyota Safety Sense<sup>TM</sup> 2.5+ (TSS 2.5+)<sup>20</sup>
- ✓ Star Safety System<sup>TM</sup>
- ✓ Ten airbags<sup>30</sup>
- ✓ Blind Spot Monitor (BSM)<sup>27</sup> with Rear Cross-Traffic Alert (RCTA)<sup>31</sup>

### Packages/Options

- ✓ Advanced Safety Package includes:
  - Bird's Eye View Camera<sup>36</sup> with Perimeter Scan
  - Intelligent Clearance Sonar (ICS)<sup>37</sup> with Rear Cross-Traffic Braking (RCTB)<sup>38</sup>



Limited

Adds to or replaces features offered on XLE

### Mechanical/Performance

- ✓ 3.5L V6 with 301 hp
- ✓ Front-Wheel Drive (FWD)
- ✓ 22 city/31 highway/25 combined combined est. mpg<sup>4</sup>

### Exterior Features

- ✓ LED headlights with smoked chrome bezels, on/off feature and Adaptive Cornering Lights
- ✓ LED taillights with dynamic turn signals
- ✓ Color-keyed heated power outside mirrors with memory feature and driver's-side auto-dimming
- ✓ 18-in. Super Chrome alloy wheels

### Interior Features

- ✓ Premium leather-trimmed seats
  - 8-way power-adjustable driver's seat with 4-way power lumbar support
  - 8-way adjustable passenger seats with 4-way power lumbar support
  - Heated and ventilated front seats
  - Heated rear seats
- ✓ Premium leather-trimmed heated steering wheel
- ✓ 10-in. color Head-Up Display (HUD)
- ✓ Genuine wood interior trim
- ✓ Frameless auto-dimming rearview mirror
- ✓ Ambient interior lighting
- ✓ Qi-compatible wireless charging system<sup>34</sup>

### Audio Multimedia

- ✓ Premium Audio includes:
  - 9-in. touchscreen and 14 JBL<sup>®19</sup> speakers including subwoofer and amplifier
  - Dynamic Navigation<sup>32</sup> with 3-year trial<sup>33</sup>
  - Android Auto<sup>TM15</sup> & Apple CarPlay<sup>®12</sup> compatible
  - SiriusXM<sup>®16</sup> with 3-month Platinum Plan trial subscription<sup>17</sup>
- ✓ Connected Services<sup>5</sup> Safety Connect<sup>®</sup> trial<sup>6</sup>

### Safety Features

- ✓ Toyota Safety Sense<sup>TM</sup> 2.5+ (TSS 2.5+)<sup>20</sup>
- ✓ Star Safety System<sup>TM</sup>
- ✓ Ten airbags<sup>30</sup>
- ✓ Blind Spot Monitor (BSM)<sup>27</sup> with Rear Cross-Traffic Alert (RCTA)<sup>31</sup>

### Packages/Options

- ✓ Advanced Safety Package includes:
  - Bird's Eye View Camera<sup>36</sup> with Perimeter Scan
  - Intelligent Clearance Sonar (ICS)<sup>37</sup> with Rear Cross-Traffic Braking (RCTB)<sup>38</sup>

## AVALON HYBRID MODELS



### XLE Hybrid

Includes these key features

#### Mechanical/Performance

- ✓ Hybrid engine: 2.5L 4-cylinder with 215 net hp
- ✓ Electronically controlled Continuously Variable Transmission (ECVT) with sequential shift mode
- ✓ Normal, Eco, EV<sup>39</sup> and Sport drive modes
- ✓ Front-Wheel Drive (FWD)
- ✓ 43 city/44 highway/44 combined est. mpg<sup>4</sup>

#### Exterior Features

- ✓ LED reflector headlights and LED DRL with auto on/off feature
- ✓ LED taillights
- ✓ Front chrome grille surround with dark gray insert and active grille shutters
- ✓ Color-keyed heated power outside mirrors with turn signal and blind spot warning<sup>27</sup> indicators
- ✓ Acoustic noise-reducing windshield and driver and front passenger-side windows
- ✓ 17-in. silver-painted alloy wheels

#### Interior Features

- ✓ Dual zone automatic climate control
- ✓ SofTex<sup>®</sup>-trimmed<sup>2</sup> seats
  - 8-way power-adjustable driver's seat with 2-way power lumbar support
  - 8-way adjustable passenger seats
  - Heated front seats
  - 60/40 split, folding rear seats
- ✓ 7-in. TFT Multi-Information Display (MID)
- ✓ Leather-trimmed steering wheel
- ✓ Smart Key System<sup>28</sup> with Push Button Start
- ✓ Hydrographic interior trim
- ✓ One USB media port, two USB-A charge ports and two USB-C charge ports<sup>29</sup>

#### Audio Multimedia

- ✓ Audio Plus includes:
  - 9-in. touchscreen and eight speakers
  - Android Auto<sup>TM15</sup> & Apple CarPlay<sup>®12</sup> compatible
  - SiriusXM<sup>®16</sup> with 3-month Platinum Plan trial subscription<sup>17</sup>
- ✓ Connected Services<sup>5</sup> Safety Connect<sup>®</sup> trial<sup>6</sup>

#### Safety Features

- ✓ Toyota Safety Sense<sup>TM</sup> 2.5+ (TSS 2.5+)<sup>20</sup>
- ✓ Star Safety System<sup>TM</sup>
- ✓ Ten airbags<sup>30</sup>
- ✓ Blind Spot Monitor (BSM)<sup>27</sup> with Rear Cross-Traffic Alert (RCTA)<sup>31</sup>

#### Packages/Options

- ✓ Premium Audio includes:
  - Dynamic Navigation<sup>32</sup> with 3-year trial<sup>33</sup>
  - 14 JBL<sup>®19</sup> speakers including subwoofer and amplifier
- ✓ Moonroof Package includes:
  - Power tilt/slide moonroof with sliding sunshade
  - Qi-compatible wireless charging system<sup>34</sup>



### XSE Hybrid Nightshade

Adds to or replaces features offered on XLE Hybrid

#### Mechanical/Performance

- ✓ Hybrid engine with 215 net hp
- ✓ Sport-tuned suspension
- ✓ 43 city/43 highway/43 combined est. mpg<sup>4</sup>

#### Exterior Features

- ✓ LED reflector headlights with smoked chrome bezels and on/off feature
- ✓ Front piano-black grille with sport mesh insert
- ✓ Gloss-black rear spoiler
- ✓ Gloss-black outside mirrors
- ✓ Black door handles
- ✓ Gloss-black window trim
- ✓ Black shark-fin antenna
- ✓ Power tilt/slide moonroof with sliding sunshade
- ✓ 19-in. black-painted alloy wheels

#### Interior Features

- ✓ SofTex<sup>®</sup>-trimmed<sup>2</sup> seats with perforation and Ultrasuede<sup>®3</sup> trim
- ✓ Leather-trimmed steering wheel with paddle shifters
- ✓ Aluminum pedal covers
- ✓ Genuine aluminum interior trim
- ✓ HomeLink<sup>®35</sup> universal transceiver
- ✓ Qi-compatible wireless charging system<sup>34</sup>

#### Safety Features

- ✓ Toyota Safety Sense<sup>TM</sup> 2.5+ (TSS 2.5+)<sup>20</sup>
- ✓ Star Safety System<sup>TM</sup>
- ✓ Ten airbags<sup>30</sup>
- ✓ Blind Spot Monitor (BSM)<sup>27</sup> with Rear Cross-Traffic Alert (RCTA)<sup>31</sup>

#### Packages/Options

- ✓ Premium Audio includes:
  - Dynamic Navigation<sup>32</sup> with 3-year trial<sup>33</sup>
  - 14 JBL<sup>®19</sup> speakers including subwoofer and amplifier



### Limited Hybrid

Adds to or replaces features offered on XLE Hybrid

#### Mechanical/Performance

- ✓ Hybrid engine with 215 net hp
- ✓ 43 city/43 highway/43 combined est. mpg<sup>4</sup>

#### Exterior Features

- ✓ LED headlights with smoked chrome bezels, on/off feature and Adaptive Cornering Lights
- ✓ LED taillights with dynamic turn signals
- ✓ Color-keyed heated power outside mirrors with memory feature and driver's-side auto-dimming
- ✓ 18-in. Super Chrome alloy wheels

#### Interior Features

- ✓ Premium leather-trimmed seats
  - 8-way power-adjustable driver's seat with 4-way power lumbar support
  - 8-way adjustable passenger seats with 4-way power lumbar support
  - Heated and ventilated front seats
  - Heated rear seats
- ✓ Premium leather-trimmed heated steering wheel
- ✓ 10-in. color Head-Up Display (HUD)
- ✓ Genuine wood interior trim
- ✓ Frameless auto-dimming rearview mirror
- ✓ Ambient interior lighting

#### Audio Multimedia

- ✓ Premium Audio includes:
  - 9-in. touchscreen and 14 JBL<sup>®19</sup> speakers including subwoofer and amplifier
  - Dynamic Navigation<sup>32</sup> with 3-year trial<sup>33</sup>
  - Android Auto<sup>TM15</sup> & Apple CarPlay<sup>®12</sup> compatible
  - SiriusXM<sup>®16</sup> with 3-month Platinum Plan trial subscription<sup>17</sup>
- ✓ Connected Services<sup>5</sup> Safety Connect<sup>®</sup> trial<sup>6</sup>

#### Safety Features

- ✓ Toyota Safety Sense<sup>TM</sup> 2.5+ (TSS 2.5+)<sup>20</sup>
- ✓ Star Safety System<sup>TM</sup>
- ✓ Ten airbags<sup>30</sup>
- ✓ Blind Spot Monitor (BSM)<sup>27</sup> with Rear Cross-Traffic Alert (RCTA)<sup>31</sup>

#### Packages/Options

- ✓ Advanced Safety Package includes:
  - Bird's Eye View Camera<sup>36</sup> with Perimeter Scan
  - Intelligent Clearance Sonar (ICS)<sup>37</sup> with Rear Cross-Traffic Braking (RCTB)<sup>38</sup>

**AVALON COLORS & TRIMS**



Midnight Black Metallic



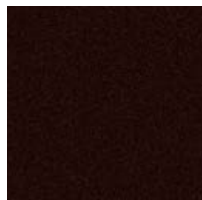
Blueprint



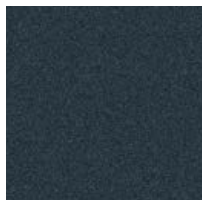
Supersonic Red<sup>1</sup>



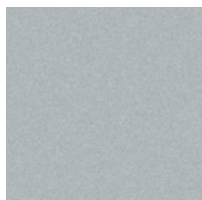
Ruby Flare Pearl<sup>1</sup>



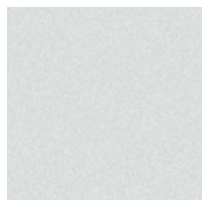
Opulent Amber



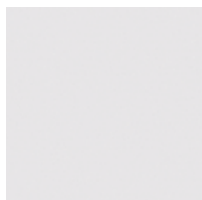
Harbor Gray Metallic



Celestial Silver Metallic

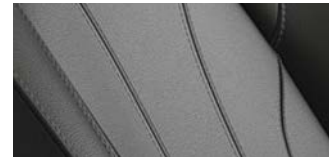


Wind Chill Pearl<sup>1</sup>



Ice Edge

XLE SofTex<sup>®2</sup> trim shown in Black

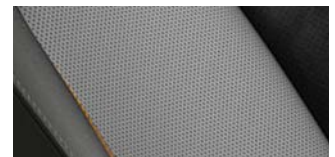


Graphite



Harvest Beige

XSE and Touring perforated SofTex<sup>®2</sup> trim with Ultrasuede<sup>®3</sup> shown in Black



Touring perforated Cognac/Black leather trim



Limited premium perforated Cognac leather trim



Graphite



Black

**AVALON WHEELS**



XLE and XLE Hybrid 17-in. silver-painted alloy wheels



XSE and Touring 19-in. black-painted machined-finish alloy wheels



Limited and Limited Hybrid 18-in. Super Chrome alloy wheels



XSE Hybrid Nightshade 19-in. black-painted alloy wheels



## AVALON ACCESSORIES

This is a great way to add extra personality to your Avalon. Not every accessory is available in your area, so for a complete list of accessories, go to [toyota.com/avalon/accessories](http://toyota.com/avalon/accessories).



Door edge guards



Alloy wheel locks



Body side moldings



TRD 19-in. alloy wheels



All-weather floor liners<sup>40</sup>



Cargo tray<sup>41</sup>



TRD shift knob



TRD carpet floor mats<sup>40</sup>



Mudguards

## WARRANTIES

Every Toyota Car, Truck and SUV is built to exceptional standards. And that's not idle boasting. We back it up with these Limited Warranty Coverages:

**Basic:** 36 months/36,000 miles (all components other than normal wear and maintenance items).

**Hybrid-Related Component Coverage:** Hybrid-related components, including the battery control module, hybrid control module and inverter with converter, are covered for 8 years/100,000 miles. Refer to applicable *Warranty and Maintenance Guide* for details.

**Hybrid Battery:** HV battery is covered for 10 years or 150,000 miles, whichever comes first. Warranty coverage is subject to terms and conditions. Refer to applicable *Warranty and Maintenance Guide* for details.

**Powertrain:** 60 months/60,000 miles (engine, transmission/transaxle, drive system, seatbelts and airbags).

**Rust-Through:** 60 months/unlimited miles (corrosion perforation of sheet metal).

**Emissions:** Coverages vary under Federal and California regulations. Refer to applicable *Warranty and Maintenance Guide* for details.

**Accessories:** For Genuine Toyota Accessories purchased at the time of the new vehicle purchase, the Toyota Accessory Warranty coverage is in effect for 36 months/36,000 miles from the vehicle's in-service date, which is the same coverage as the Toyota New Vehicle Limited Warranty.

For Genuine Toyota Accessories purchased after the new vehicle purchase the coverage is 12 months, regardless of mileage, from the date the accessory was installed on the vehicle, or the remainder of any applicable new vehicle warranty, whichever provides greater coverage.

You may be eligible for transportation assistance if it's necessary that your vehicle be kept overnight for repairs covered under warranty. Please see your authorized Toyota dealership for further details.

For complete details about Toyota's warranties, please visit [www.toyota.com](http://www.toyota.com), refer to the applicable *Warranty and Maintenance Guide* or see your Toyota dealer.

**AVALON FEATURES<sup>42</sup>**

S = Standard O = Optional P = Available as part of a package

Exterior	XLE	Touring	Limited	XLE Hybrid	XSE Hybrid Nightshade	Limited Hybrid
LED reflector headlights and LED Daytime Running Lights (DRL) with auto on/off feature	S			S		
LED reflector headlights with smoked chrome bezels and on/off feature; LED Daytime Running Lights (DRL) with auto on/off feature					S	
LED headlights with smoked chrome bezels and on/off feature; fully integrated LED Daytime Running Lights (DRL) with auto on/off feature and laser-ablation design with dynamic auxiliary turn signals, Adaptive Cornering Lights		S	S			S
LED taillights	S			S	S	
LED taillights with laser-ablation design and dynamic auxiliary turn signals		S	S			S
Front chrome grille surround with dark gray insert	S		S			
Front chrome grille surround with dark gray insert and active grille shutter				S		S
Front piano-black grille with sport mesh insert		S				
Front piano-black grille with sport mesh insert and active grille shutter					S	
Gloss-black window trim						
Black door handles					S	
Color-keyed door handles	S	S	S	S	S	S
Black shark-fin antenna					S	
Color-keyed shark-fin antenna	S	S	S	S	S	S
Color-keyed heated power outside mirrors with turn signal and blind spot warning <sup>27</sup> indicators	S			S		
Color-keyed heated power outside mirrors with turn signal and blind spot warning <sup>27</sup> indicators, memory feature and driver's-side auto-dimming			S			S
Gloss-black heated power outside mirrors with turn signal and blind spot warning <sup>27</sup> indicators, memory feature and driver's-side auto-dimming		S				
Gloss-black heated power outside mirrors with turn signal and blind spot warning <sup>27</sup> indicators					S	
Aerodynamic front tangential venting	S	S	S	S	S	S
Power tilt/slide moonroof with sliding sunshade	P	S	S	P	S	S
17-in. silver-painted alloy wheels with P215/55R17 tires	S			S		
18-in. Super Chrome alloy wheels with P235/45R18 tires			S			S
19-in. black-painted machined-finish alloy wheels with P235/40R19 tires		S				
19-in. black-painted alloy wheels with P235/40R19 tires					S	
18-in. dark-gray-painted alloy wheels with P235/45R18 tires					S	
Washer-linked variable intermittent windshield wipers	S	S	S	S	S	S
Acoustic noise-reducing windshield and driver and front passenger-side windows	S	S	S	S	S	S
High Solar Energy-Absorbing (HSEA) glass	S	S	S	S	S	S
Gloss-black rear spoiler		S			S	
Black "AVALON" lettering		S			S	
Dual exhaust with chrome tips	S		S			
Dual exhaust with quad chrome tips		S				
Single hidden exhaust				S	S	S
Intake Sound Generator (ISG)		S				
Sport sound-tuned exhaust		S				

**Interior**

Dual zone automatic climate control with air filter and rear-seat vents	S	S	S			
Dual zone automatic climate control with air filter, electric compressor, humidity sensor and rear-seat vents				S	S	S
Audio Plus — includes 9-in. touchscreen, eight speakers (including subwoofer and amplifier), USB media port; <sup>29</sup> four USB charge ports; <sup>29</sup> hands-free phone capability and music streaming <sup>44</sup> via Bluetooth <sup>®44</sup> wireless technology, Android Auto <sup>™15</sup> & Apple CarPlay <sup>®12</sup> & Amazon Alexa <sup>18</sup> compatible, SiriusXM <sup>®16</sup> with 3-month Platinum Plan trial subscription. <sup>17</sup> See <a href="http://toyota.com/audio-multimedia">toyota.com/audio-multimedia</a> for details. Connected Services <sup>5</sup> — Safety Connect <sup>®</sup> with 1-year trial; <sup>6</sup> Service Connect with 10-year trial; <sup>6</sup> Remote Connect with 1-year trial; <sup>9</sup> Wi-Fi Connect with up to 2 GB within 3-month trial. <sup>10</sup> See <a href="http://toyota.com/connected-services">toyota.com/connected-services</a> for details.	S			S	S	
Premium Audio, Dynamic Navigation <sup>32</sup> with 3-year trial <sup>33</sup> — includes 9-in. touchscreen, 14 JBL <sup>®19</sup> speakers (including subwoofer and amplifier), USB media port; <sup>29</sup> four USB charge ports; <sup>29</sup> hands-free phone capability and music streaming <sup>44</sup> via Bluetooth <sup>®44</sup> wireless technology, Android Auto <sup>™15</sup> & Apple CarPlay <sup>®12</sup> & Amazon Alexa <sup>18</sup> compatible, SiriusXM <sup>®16</sup> with 3-month Platinum Plan trial subscription. <sup>17</sup> See <a href="http://toyota.com/audio-multimedia">toyota.com/audio-multimedia</a> for details. Connected Services <sup>5</sup> — Safety Connect <sup>®</sup> with 1-year trial; <sup>6</sup> Service Connect with 10-year trial; <sup>6</sup> Remote Connect with 1-year trial; <sup>9</sup> Wi-Fi Connect with up to 2 GB within 3-month trial. <sup>10</sup> Destination Assist with 1-year trial. <sup>11</sup> See <a href="http://toyota.com/connected-services">toyota.com/connected-services</a> for details.	O	S	S	O	O	S
Auto engine shutoff	S	S	S	S	S	S
Active Noise Control (ANC)		S				
Engine Sound Enhancement (ESE)		S				
Qi-compatible wireless smartphone charging <sup>34</sup>	P	S	S	P	S	S
Integrated backup camera <sup>45</sup> with dynamic gridlines	S	S	S	S	S	S

See numbered footnotes in Disclosures section.

**AVALON FEATURES**

S = Standard O = Optional P = Available as part of a package

Interior (continued)	XLE	Touring	Limited	XLE Hybrid	XSE Hybrid Nightshade	Limited Hybrid
7-in. TFT Multi-Information Display (MID) with customizable settings, odometer, outside temperature, fuel economy and trip information, current/average fuel economy, distance to empty, average speed, trip distance with timer, TPMS <sup>46</sup> scheduled maintenance and warning messages	S	S	S			
7-in. TFT Multi-Information Display (MID) with customizable settings, odometer, outside temperature, fuel economy and trip information, current/average fuel economy, distance to empty, average speed, hybrid system information, energy monitor, TPMS <sup>46</sup> scheduled maintenance and warning messages				S	S	S
SofTex <sup>®</sup> -trimmed <sup>2</sup> heated front seats; 8-way adjustable driver's seat with 2-way power lumbar support; 8-way adjustable passenger seats	S			S		
SofTex <sup>®</sup> -trimmed <sup>2</sup> seats with perforation and Ultrasuede <sup>®3</sup> trim on heated front seats; 8-way adjustable driver's seat with 2-way power lumbar support; 8-way adjustable passenger seats					S	
Premium leather-trimmed heated and ventilated front seats; 8-way adjustable driver's seat with 4-way power lumbar support and memory function; 8-way adjustable passenger seats with 4-way power lumbar support			S			S
SofTex <sup>®</sup> -trimmed <sup>2</sup> seats with perforation and Ultrasuede <sup>®3</sup> trim on heated and ventilated front seats; 8-way adjustable driver's seat with 4-way power lumbar support and memory function; 8-way adjustable passenger seats with 4-way power lumbar support		S				
60/40 split, folding rear seats with two adjustable and one fixed headrest, and armrest with cup holders	S	S	S	S	S	S
Heated rear seats		S	S			S
Full-Speed Range Dynamic Radar Cruise Control (DRCC) <sup>22</sup>	S	S	S	S	S	S
Tilt/telescopic leather-wrapped steering wheel with Multi-Information Display (MID), audio and Bluetooth <sup>®44</sup> hands-free and voice-command controls	S			S		
Tilt/telescopic premium leather-wrapped steering wheel, Multi-Information Display (MID), paddle shifters, audio, Bluetooth <sup>®44</sup> hands-free and voice-command controls					S	
Heated tilt/telescopic premium leather-wrapped steering wheel with memory function, Multi-Information Display (MID), paddle shifters, audio, Bluetooth <sup>®44</sup> hands-free and voice-command controls		S				
Heated tilt/telescopic premium leather steering wheel with Multi-Information Display (MID), audio, Bluetooth <sup>®44</sup> hands-free and voice-command controls						
Heated tilt/telescopic premium leather-wrapped steering wheel with memory function, Multi-Information Display (MID), audio, Bluetooth <sup>®44</sup> hands-free and voice-command controls			S			S
3-mode switch (Eco, Normal, Sport)	S		S			
4-mode switch (EV, <sup>39</sup> Eco, Normal, Sport)				S	S	S
4-mode switch (Eco, Normal/Custom, Sport, Sport+)		S				
10-in. color Head-Up Display (HUD) with customizable settings, speedometer, navigation, <sup>47</sup> shift position, compass, TSS <sup>20</sup> indicators, audio, phone, outside temperature and adjustable brightness		S	S			
10-in. color Head-Up Display (HUD) with customizable settings, speedometer, navigation, <sup>47</sup> shift position, compass, TSS <sup>20</sup> indicators, audio, phone, outside temperature, Hybrid System Indicator and adjustable brightness						S
Bird's Eye View Camera <sup>36</sup> with Perimeter Scan, 360-degree Overhead View in drive and reverse, and Curb View		P	P			P
Hydrographic interior trim	S			S		
Genuine aluminum interior trim		S			S	
Genuine wood interior trim			S			S
Aluminum pedal covers		S			S	
Ambient lighting for cup holders, side of console and door handles		S	S			S
Smart Key System <sup>28</sup> on front doors and trunk with Push Button Start, remote keyless entry system and remote illuminated entry	S	S	S	S	S	S
Power windows with 4-window auto up/down, jam protection and retained-power features	S	S	S	S	S	S
Rear window defogger with timer	S	S	S	S	S	S
Power door locks with shift-linked automatic locking feature with anti-lockout feature	S	S	S	S	S	S
Auto-dimming rearview mirror	S			S		
Auto-dimming rearview mirror and HomeLink <sup>®35</sup> universal transceiver					S	
Frameless auto-dimming rearview mirror and HomeLink <sup>®35</sup> universal transceiver		S	S		S	S
Overhead console with maplights and Safety Connect <sup>®6</sup> button	S	S	S	S	S	S
Covered center console, armrest and storage	S	S	S	S	S	S
One 12V auxiliary power outlet <sup>48</sup>	S	S	S	S	S	S
Two USB-A charge ports <sup>29</sup>	S	S	S	S	S	S
Two USB-C charge ports <sup>29</sup>	S	S	S	S	S	S
Dual sun visors with sliding extensions and illuminated vanity mirrors	S	S	S	S	S	S
Two front and two rear cup holders; two front-door and two rear bottle holders	S	S	S	S	S	S
Electric Parking Brake (EPB) <sup>49</sup> with Brake Hold <sup>50</sup> function	S	S	S	S	S	S



## AVALON FEATURES

S = Standard O = Optional P = Available as part of a package

Safety/Convenience	XLE	Touring	Limited	XLE Hybrid	XSE Hybrid Nightshade	Limited Hybrid
<b>STAR SAFETY SYSTEM</b> — includes Enhanced Vehicle Stability Control (VSC) <sup>51</sup> Traction Control (TRAC), 4-wheel Anti-lock Brake System (ABS), Electronic Brake-force Distribution (EBD), Brake Assist (BA) <sup>52</sup> and Smart Stop Technology <sup>®</sup> (SST) <sup>53</sup>	S	S	S	S	S	S
Ten airbags <sup>50</sup> — includes driver and front passenger Advanced Airbag System, driver and front passenger seat-mounted side airbags, driver and front passenger knee airbags, rear seat-mounted side airbags, and front and rear side curtain airbags	S	S	S	S	S	S
Driver and front passenger Whiplash-Injury-Lessening (WIL) seats <sup>54</sup>	S	S	S	S	S	S
3-point seatbelts for all seating positions; driver-side Emergency Locking Retractor (ELR) and Automatic/Emergency Locking Retractor (ALR/ELR) on all passenger seatbelts	S	S	S	S	S	S
LATCH (Lower Anchors and Tethers for Children) includes lower anchors on outboard rear seats	S	S	S	S	S	S
Child-protector rear door locks and power window lockout control	S	S	S	S	S	S
Energy-absorbing collapsible steering column	S	S	S	S	S	S
Front and rear energy-absorbing crumple zones	S	S	S	S	S	S
Side-impact door beams	S	S	S	S	S	S
Tire Pressure Monitor System (TPMS) <sup>46</sup> with direct pressure readout	S	S	S	S	S	S
Collision sensors: deactivate high-voltage battery				S	S	S
Safety Connect <sup>®6</sup> — includes Emergency Assistance, Stolen Vehicle Locator, <sup>55</sup> Roadside Assistance <sup>7</sup> and Automatic Collision Notification; with three-year trial subscription <sup>6</sup>	S	S	S	S	S	S
Toyota Safety Sense™ 2.5+ (TSS 2.5+) <sup>20</sup> — Pre-Collision System with Pedestrian Detection (PCS w/PD), <sup>21</sup> Lane Departure Alert with Steering Assist (LDA w/SA), <sup>23</sup> Automatic High Beams (AHB) <sup>24</sup> and Full-Speed Range Dynamic Radar Cruise Control (DRCC) <sup>22</sup>	S	S	S	S	S	S
Blind Spot Monitor (BSM) <sup>27</sup> with Rear Cross-Traffic Alert (RCTA) <sup>31</sup>	S	S	S	S	S	S
Intelligent Clearance Sonar (ICS) <sup>37</sup> with Rear Cross-Traffic Braking (RCTB) <sup>38</sup>		P	P			
Hill Start Assist Control (HAC) <sup>56</sup>	S	S	S	S	S	S
Anti-theft system with alarm and engine immobilizer <sup>57</sup>	S	S	S	S	S	S
Vehicle Approach Noise				S	S	S
ToyotaCare <sup>®8</sup> featuring a no cost maintenance plan with Roadside Assistance	S	S	S	S	S	S

## AVALON SPECIFICATIONS

### Mechanical/Performance

#### ENGINE

Hybrid engine: 2.5-Liter Dynamic Force 4-Cylinder DOHC 16-Valve D-4S Dual Injection with VVT-iE, VVT-i with Eco, Normal, Sport and EV <sup>39</sup> drive modes; 176 hp @ 5700 rpm; 163 lb.-ft. @ 3600-5200 rpm				S	S	S
3.5-Liter V6 DOHC 24-Valve D-4S Dual Injection with VVT-iW and VVT-i; 301 hp @ 6600 rpm; 267 lb.-ft. @ 4700 rpm	S	S	S			
Compression ratio	11.8:1	11.8:1	11.8:1	14.0:1	14.0:1	14.0:1

#### EMISSION RATING

Super Ultra Low Emission Vehicle (SULEV) <sup>43</sup>				S	S	S
Ultra Low Emission Vehicle II (ULEV-II)	S	S	S			

#### ELECTRONIC MOTOR

Power output				118 HP (88 KW)	118 HP (88 KW)	118 HP (88 KW)
Torque				149 LB.-FT. (202 N-M)	149 LB.-FT. (202 N-M)	149 LB.-FT. (202 N-M)
Voltage				650V (MAX SYS.)	650V (MAX SYS.)	650V (MAX SYS.)
Hybrid system net power				215 HP	215 HP	215 HP

#### TRACTION BATTERY

Lithium battery				S	S	S
Voltage				259 V	259 V	259 V

#### TRANSMISSION

Direct Shift-8AT 8-speed Electronically Controlled automatic Transmission with intelligence (ECT-i) with Sequential Shiftmatic™ Mode	S	S	S			
Electronically controlled Continuously Variable Transmission (ECVT) with Sequential Shiftmatic™ Mode				S	S	S

#### DRIVETRAIN

Front-Wheel Drive (FWD)	S	S	S	S	S	S
-------------------------	---	---	---	---	---	---

#### BODY CONSTRUCTION

Unitized body with front and rear anti-vibration sub-frames	S	S	S	S	S	S
Increased-thickness underbody braces						

## AVALON SPECIFICATIONS

S = Standard O = Optional P = Available as part of a package

Mechanical/Performance (continued)	XLE	Touring	Limited	XLE Hybrid	XSE Hybrid Nightshade	Limited Hybrid
<b>SUSPENSION</b>						
Independent MacPherson strut front suspension with stabilizer bar; multi-link rear suspension with stabilizer bar	S		S	S		S
Independent MacPherson strut front suspension with stabilizer bar; multi-link rear suspension with sport-tuned shock absorbers, stabilizer bar and springs		S			S	
Adaptive Variable Suspension (AVS) system		S				
<b>STEERING</b>						
Electric Power Steering (EPS); power-assisted rack-and-pinion	S	S	S	S	S	S
Turning circle diameter, curb to curb (ft.)	37.7	38.7	38.7	37.7	38.7	38.7
<b>BRAKES</b>						
Power-assisted, ventilated 12.0-in. front disc brakes; solid 11-in. rear disc brakes with hydraulic brake booster, Electronically Controlled Braking (ECB) system and Star Safety System™	S	S	S			
Power-assisted, ventilated 11.65-in. front disc brakes; solid 11.1-in. rear disc brakes with hydraulic brake booster, Electronically Controlled Braking (ECB) system, integrated regenerative braking and Star Safety System™				S	S	S
Active Cornering Assist (ACA)		S				

## Dimensions

EXTERIOR DIMENSIONS (in.)						
Overall height, unloaded	56.5	56.5	56.5	56.5	56.5	56.5
Overall width	72.8	72.8	72.8	72.8	72.8	72.8
Overall length	195.9	195.9	195.9	195.9	195.9	195.9
Wheelbase	113.0	113.0	113.0	113.0	113.0	113.0
Ground clearance	5.3	5.3	5.3	5.3	5.3	5.3
Track (front/rear)	63.0/63.6	62.6/63.4	62.6/63.4	63.0/63.6	62.3/63.6	62.3/63.6
Coefficient of drag (Cd)	0.27	0.27	0.27	0.27	0.27	0.27
INTERIOR DIMENSIONS (in.)						
Head room	37.4/37.5	37.4/37.5	37.4/37.5	37.4/37.1	37.4/37.1	37.4/37.1
Shoulder room	58.3/57.1	58.3/57.1	58.3/57.1	58.3/57.1	58.3/57.1	58.3/57.1
Hip room	55.8/54.8	55.8/54.8	55.8/54.8	55.8/54.7	55.8/54.7	55.8/54.7
Leg room	42.1/40.3	42.1/40.3	42.1/40.3	42.1/40.4	42.1/40.4	42.1/40.4

## Weights and Capacities

Curb weight (lb.)	3560	3715	3695	3610	3685	3695
EPA passenger volume (cu. ft.)	104.3	102.9	102.9	103.8	102.2	102.2
Cargo volume; <sup>41</sup> rear seatbacks up (cu. ft.)	16.09	16.09	16.09	16.09	16.09	16.09
Fuel tank (gal.)	14.5	15.8	15.8	13.2	13.2	13.2
Seating capacity	5	5	5	5	5	5

## Tires

Type: All-season	S	S	S	S	S	S
Spare: Temporary	S	S	S	S	S	S

## Mileage Estimates (mpg city/highway/combined)<sup>4</sup>

	22/32/26	22/31/25	22/31/25	43/44/44	43/43/43	43/43/43
--	----------	----------	----------	----------	----------	----------

## DISCLOSURES

1. Extra-cost color. 2. SofTex® is a registered trademark of Toyota Motor Sales, U.S.A., Inc. 3. Ultrasuede® is a registered trademark of Toray Industries, Inc. 4. EPA-estimated 22 city/32 hwy/26 combined mpg rating for 2022 Avalon XLE; 22 city/31 hwy/25 combined for 2022 Avalon Touring and Limited; 43 city/44 hwy/44 combined for 2022 Avalon XLE Hybrid; and 43 city/43 hwy/43 combined for 2022 Avalon XSE Nightshade Hybrid and Limited Hybrid. Use for comparison purposes only. Your mileage will vary for many reasons, including your vehicle's condition and how/where you drive. See [www.fueleconomy.gov](http://www.fueleconomy.gov). 5. Connected Services depends on factors outside of Toyota's control, including an operative telematics device, a cellular connection, GPS signal, and the availability of a compatible wireless network, without which system functionality and availability may be limited or precluded, including access to response center and emergency support. Service may vary by vehicle and region. Subscription required after trial. Terms of Use apply. Data charges may apply. Apps and services subject to change at any time without notice. See [toyota.com/connected-services](http://toyota.com/connected-services) for details. To learn about Toyota's data collection, use, sharing and retention practices, please visit <https://www.toyota.com/privacyvts>. Stolen vehicle police report required to use Stolen Vehicle Locator. Connected Services by Toyota trials are at no extra cost. All trials begin on the original date of purchase or lease of a new vehicle, with the exception of Wi-Fi for which the trial begins at the time of activation. Paid subscription required after trial in order to continue accessing the respective services. Terms of Use apply. 6. Safety Connect® depends on factors outside of Toyota's control, including an operative telematics device, a cellular connection, GPS signal, and the availability of a compatible wireless network, without which system functionality and availability may be limited or precluded, including access to response center and emergency support. Stolen vehicle police report required to use Stolen Vehicle Locator. Some features may require the Toyota app. Registration required. Subscription required after trial. Service subject to change at any time without notice. Terms of Use apply. Data charges may apply. Service may vary by vehicle and region. See usage precautions and service limitations in *Owner's Manual* and at [toyota.com/connected-services](http://toyota.com/connected-services) for additional details. To learn about Toyota's data collection, use, sharing and retention practices, please visit <https://www.toyota.com/privacyvts/>. The Safety Connect® trial period is at no extra cost and begins on the original date of purchase or lease of a new vehicle. Paid subscription required after trial to access the service. 7. Requires adequate cellular coverage and GPS signal strength. May not work in all areas. Service may vary by vehicle and region. See Toyota Dealer for details and exclusions. 8. Information provided is based on the last time data was collected from the vehicle and is not real time data. Service Connect depends on factors outside of Toyota's control, including an operative telematics device, a cellular connection, GPS signal, and the availability of a compatible wireless network, without which system functionality and availability may be limited or precluded. Service may vary by vehicle and region. Registration required. Subscription required after trial. Terms of Use apply. Data charges may apply. See usage precautions and service limitations in *Owner's Manual* and at [toyota.com/connected-services](http://toyota.com/connected-services) for additional details. To learn about Toyota's data collection, use, sharing and retention practices, please visit <https://www.toyota.com/privacyvts/>. The Service Connect trial period is at no extra cost and begins on the original date of purchase or lease of a new vehicle. Paid subscription required after trial. Service Connect renewal will be included when Safety Connect®, Remote Connect or Destination Assist connected service renewal is selected. Service Connect is not renewable as a stand-alone service. 9. Use only if aware of circumstances surrounding vehicle and it is legal and safe to do so (e.g., do not remotely start engine if vehicle is in an enclosed space or vehicle is occupied by a child). Toyota Remote Connect depends on factors outside of Toyota's control, including an operative telematics device, a cellular connection, GPS signal, and the availability of a compatible wireless network, without which system functionality and availability may be limited or precluded. Service may vary by vehicle and region. Registration and Toyota app download required. Subscription required after trial. Terms of Use apply. Data charges may apply. Remote start/stop not available on manual transmission-equipped vehicles. Services subject to change at any time without notice. See usage precautions and service limitations in *Toyota Owner's Manual* and at <https://www.toyota.com/connected-services> for additional details. To learn about Toyota's data collection, use, sharing and retention practices, please visit <https://www.toyota.com/privacyvts/>. The Toyota Remote Connect trial period is at no extra cost and begins on the original date of purchase or lease of a new vehicle. Paid subscription required after trial to access the service. Terms of Use apply. 10. Eligible vehicle and wireless service required. Wi-Fi Connect depends on factors outside of Toyota's control, including an operative telematics device, a cellular connection, GPS signal, and the availability of a compatible wireless network, without which system functionality and availability may be limited or precluded. Wi-Fi Connect coverage and service not available everywhere. Valid in the contiguous U.S. and Alaska. Do not drive distracted. Go to [att.com/toyota](http://att.com/toyota) for terms and conditions. Data usage and charges apply. Up to 5 devices can be supported using in-vehicle connectivity. Apps and services subject to change at any time without notice. The Wi-Fi Connect trial begins at the time of activation and expires when 2GB of data is used or when the 3-month period ends. Subscription required after trial. Terms and conditions apply. 11. Destination Assist depends on factors outside of Toyota's control, including an operative telematics device, a cellular connection, GPS signal, and the availability of a compatible wireless network, without which system functionality and availability may be limited or precluded. Use common sense when relying on this information. Service may vary by vehicle and region. Registration required. Subscription required after trial. Services subject to change at any time without notice. Terms of Use apply. Data charges may apply. See *Owner's Manual* and [toyota.com/connected-services](http://toyota.com/connected-services) for additional limitations and details. To learn about Toyota's data collection, use, sharing and retention practices, please visit <https://www.toyota.com/privacyvts/>. The Destination Assist trial period is at no extra cost and begins on the original date of purchase or lease of a new vehicle. Paid subscription required after trial to access the service. 12. Apps and services are subject to change at any time without notice. Data charges may apply. Apple CarPlay® functionality requires a compatible iPhone® connected with an approved data cable into the USB media port. Apple CarPlay® is a registered trademark of Apple Inc. 13. iPhone® is a registered trademark of Apple Inc. All rights reserved. 14. Android is a trademark of Google LLC. 15. Vehicle user interface is a product of Google and its terms and privacy statement apply. To use Android Auto on your audio display, you'll need an Android Auto compatible vehicle and Android phone. For phone compatibility visit: <https://www.android.com/auto/>. Requires compatible smartphone connected with an approved data cable into the USB media port, and data plan rates apply. Apps and services vary by phone carrier and are subject to change at any time without notice. Android, Android Auto and Waze are trademarks of Google. 16. Trial length and service availability may vary by model, model year or trim. Service will automatically stop at the end of your trial subscription period unless you decide to continue service. If you do not wish to enjoy your trial, you can cancel by calling the number below. All SiriusXM services require a subscription, each sold separately by SiriusXM after the trial period. **Service subject to the SiriusXM Customer Agreement and Privacy Policy; visit [www.siriusxm.com](http://www.siriusxm.com) to see complete terms and how to cancel which includes calling 1-866-635-2349.** Some services and features are subject to device capabilities and location availability. All fees, content and features are subject to change. SiriusXM, Pandora and all related logos are trademarks of Sirius XM Radio Inc. and its respective subsidiaries. 17. SiriusXM trial length and service availability may vary by model, model year or trim. 18. Amazon, Alexa and all related marks are trademarks of Amazon.com, Inc. or its affiliates. Certain functions require adequate signal strength and/or smartphone technology/connectivity. Not all Amazon Alexa functionality is available for in-vehicle use. See applicable app for details. Download of the Toyota app and Toyota+Alexa app are both required to begin in-vehicle use of Alexa. Data charges may apply for certain functions. Apps and services subject to change at any time without notice. To learn more, go to <https://www.toyota.com/audio-multimedia>. To learn more about Toyota's data collection, use, sharing and retention practices, please visit <https://www.toyota.com/privacyvts/>. 19. JBL® is a registered trademark of Harman International Industries, Inc. 20. Toyota Safety Sense™ effectiveness is dependent on many factors including road, weather and vehicle conditions. Drivers are responsible for their own safe driving. Always pay attention to your surroundings and drive safely. See *Owner's Manual* for additional limitations and details. 21. The Pre-Collision System (PCS) with Pedestrian Detection (PD) is designed to determine if impact is imminent and help reduce impact speed and damage in certain frontal collisions involving a vehicle, a pedestrian or a bicyclist. PCS w/PD is not a substitute for safe and attentive driving. System effectiveness depends on many factors, such as speed, size and position of pedestrian or bicyclist and weather, light and road conditions. See *Owner's Manual* for additional limitations and details. 22. Full-Speed Range Dynamic Radar Cruise Control (DRCC) is designed to assist the driver and is not a substitute for safe and attentive driving practices. System effectiveness is dependent on many factors including road, weather and traffic conditions. Vehicles with manual transmission have regular DRCC. See *Owner's Manual* for additional limitations and details. 23. Lane Departure Alert with Steering Assist is designed to read visible lane markers under certain conditions. It provides a visual and audible alert and slight steering force when lane departure is detected. It is not a collision-avoidance system or a substitute for safe and attentive driving. Effectiveness is dependent on many factors including road, weather and vehicle conditions. See *Owner's Manual* for additional limitations and details. 24. Automatic High Beams operate at speeds above 25 mph. Factors such as a dirty windshield, weather, lighting and terrain limit effectiveness, requiring the driver to manually operate the high beams. See *Owner's Manual* for additional limitations and details. 25. Lane Tracing Assist (LTA) is designed to read visible lane markers and detect other vehicles under certain conditions. It is only operational when DRCC is engaged. See *Owner's Manual* for additional limitations and details. 26. Do not rely exclusively on Road Sign Assist (RSA). RSA is a driver support system that utilizes the vehicle's forward-facing camera and navigation system (when data is available) to recognize certain road signs and provide information to the driver via the multi-information display and/or Head-Up Display. Effectiveness is dependent on road, weather, vehicle and sign conditions. Use common sense when using RSA and do not drive distracted. See *Owner's Manual* for additional limitations and details. 27. Do not rely exclusively on the Blind Spot Monitor. Always look over your shoulder and use your turn signal. There are limitations to the function, detection and range of the monitor. See *Owner's Manual* for additional limitations and details. 28. The Smart Key System may interfere with some pacemakers or cardiac defibrillators. If you have one of these medical devices, please talk to your doctor to see if you should deactivate this system. 29. May not be compatible with all mobile phones, MP3/WMA players and like models. 30. Airbag systems are Supplemental Restraint Systems and are designed to inflate only under certain conditions and in certain types of severe collisions. To decrease the risk of injury from an inflating airbag, always wear seatbelts and sit upright in the middle of the seat as far back as possible. Do not put objects in front of an airbag or around the seatback. Do not use a rearward-facing child seat in any front passenger seat. See *Owner's Manual* for additional limitations and details. 31. Do not rely exclusively on the Rear Cross-Traffic Alert system. Always look over your shoulder and use your mirrors to confirm rear clearance. There are limitations to the function, detection and range of the system. See *Owner's Manual* for additional limitations and details. 32. Dynamic Navigation depends on factors outside of Toyota's control, including an operative telematics device, a cellular connection, GPS signal, and the availability of a compatible wireless network, without which system functionality and availability may be limited or precluded. Services not available in every city or roadway. Use common sense when relying on information provided. Service may vary by vehicle and region. Registration is required. Subscription required after trial. Terms of Use apply. Data charges may apply. See *Owner's Manual* and <https://www.toyota.com/connected-services> for additional limitations and details. To learn about Toyota's data collection, use, sharing and retention practices, please visit <https://www.toyota.com/privacyvts/>. 33. The Dynamic Navigation trial period is at no extra cost and begins on the original date of purchase or lease of a new vehicle. Paid subscription required after trial to access the service. 34. Qi wireless charging may not be compatible with all mobile phones, MP3/WMA players and like models. When using the wireless charging system, avoid placing metal objects between the wireless charger and the mobile device when charging is active. Doing so may cause metal objects to become hot and could cause burns. 35. HomeLink® and the HomeLink® house icon are registered trademarks of Gentex Corporation. 36. The Bird's Eye View Camera does not provide a comprehensive view of the area surrounding the vehicle and you should also look around the vehicle, using mirrors to confirm surrounding clearance. Environmental conditions may limit effectiveness and view may become obscured. See *Owner's Manual* for additional limitations and details. 37. Intelligent Clearance Sonar (ICS) is designed to assist drivers in avoiding potential forward and rearward collisions at speeds of 9 mph or less. Certain vehicle and environmental factors, including



## DISCLOSURES

an object's shape, size and composition, may affect the system's effectiveness. Always look around outside the vehicle and use mirrors to confirm clearance. See *Owner's Manual* for additional limitations and details. **38.** Do not rely exclusively on the Rear Cross-Traffic Braking system. Always look over your shoulder and use your mirrors to confirm rear clearance. The system cannot prevent all collisions, and performance is dependent on road, weather and vehicle conditions. See *Owner's Manual* for additional limitations and details. **39.** EV Mode lets you operate solely on battery power at low speeds for short distances and in limited circumstances, such as in a parking garage. Different conditions may prevent or limit usage. See your *Owner's Manual* for limitations and details. **40.** This floor mat/floor liner was designed specifically for use in your model and model year vehicle and SHOULD NOT be used in any other vehicle. To avoid potential interference with pedal operation, each mat/liner must be secured with its fasteners. Do not install a floor mat/floor liner on top of an existing floor mat/floor liner. **41.** Cargo and load capacity limited by weight and distribution. Always properly secure cargo and cargo area. **42.** Toyota strives to build vehicles to match customer interest and thus they typically are built with popular options and option packages. Not all options/packages are available separately and some may not be available in all regions of the country. If you would prefer a vehicle with no or different options, contact your dealer to check for current availability or the possibility of placing a special order. Color(s) depicted may vary based on multiple factors, including ambient lighting and the format in which it is being viewed (e.g., computer, mobile device or print). **43.** Meets Tier-2/Bin-3 Federal emissions standard. **44.** The Bluetooth® word mark and logos are registered trademarks owned by Bluetooth SIG, Inc., and any use of such marks by Toyota is under license. A compatible Bluetooth®-enabled phone must first be paired. Phone performance depends on software, coverage and carrier. **45.** The backup camera does not provide a comprehensive view of the rear area of the vehicle and you should also look around the vehicle, using mirrors to confirm rearward clearance. Environmental conditions may limit effectiveness and view may become obscured. See *Owner's Manual* for additional limitations and details. **46.** The Tire Pressure Monitor System alerts the driver when tire pressure is critically low. For optimal tire wear and performance, tire pressure should be checked regularly with a gauge; do not rely solely on the monitor system. See *Owner's Manual* for additional limitations and details. **47.** Be sure to obey traffic regulations and maintain awareness of road and traffic conditions at all times. Functionality, availability and accuracy of information provided by the system depends on many factors and service may not be available in every location. Use common sense when relying on information provided. Apps/services vary by phone/carrier. Select apps use large amounts of data; you are responsible for charges. Apps and services subject to change at any time without notice. See [toyota.com/connected-services](http://toyota.com/connected-services) for details. Services and programming subject to change. Updates may be available from your dealer at an additional cost. See *Owner's Manual* for additional limitations and details. **48.** Rated for 12 volts/10 amps. See *Owner's Manual* for additional limitations and details. **49.** When the system is on, Electric Parking Brake is designed to engage the Parking Brake under limited conditions. It may not hold the vehicle under all conditions. See *Owner's Manual* for additional limitations and details. **50.** When the system is on, Brake Hold is designed to keep the brakes engaged after the driver brings the vehicle to a complete stop. It may not hold the vehicle under certain conditions and does not function when the vehicle is in Reverse. Brake Hold is not a substitute for safe and attentive driving. See *Owner's Manual* for additional limitations and details. **51.** Vehicle Stability Control is an electronic system designed to help the driver maintain vehicle control under adverse conditions. It is not a substitute for safe and attentive driving practices. Factors including speed, road conditions, weather and driver steering input can all affect whether VSC will be effective in preventing a loss of control. See *Owner's Manual* for additional limitations and details. **52.** Brake Assist is designed to help the driver take advantage of ABS and is not a substitute for safe driving practices. Braking effectiveness also depends on proper vehicle maintenance, tire and road conditions. See *Owner's Manual* for additional limitations and details. **53.** Smart Stop Technology® operates only in the event of certain contemporaneous brake and accelerator pedal applications. When engaged, the system will reduce power to help the brakes bring the vehicle to a stop. Factors including speed, road conditions and driver input can all impact stopping distance. Smart Stop Technology® is not a substitute for safe and attentive driving and does not guarantee instant stopping. See *Owner's Manual* for additional limitations and details. **54.** Whiplash-Injury-Lessening front seats can help reduce the severity of whiplash injury in certain rear-end collisions. **55.** Building and/or parking structures may limit system effectiveness. Stolen vehicle police report required to use Stolen Vehicle Locator. For additional assistance contact the Toyota Customer Experience Center at 1-800-331-4331. **56.** Hill Start Assist Control is designed to help minimize backward rolling on steep ascents. It is not a substitute for safe driving judgment and practices. Factors including speed, grade, surface conditions and driver input can all affect whether HAC will be effective in preventing a loss of control. See *Owner's Manual* for additional limitations and details. **57.** The engine immobilizer is a state-of-the-art anti-theft system that is initiated when you insert your key into the ignition switch or bring a Smart Key fob into the vehicle. The engine will only start if the code in the transponder chip inside the key/fob matches the code in the vehicle's immobilizer. The transponder chip is embedded in the key/fob and can be costly to replace. If you lose a key or fob, your Toyota dealer can help or go to [www.aloa.org](http://www.aloa.org) to find a qualified locksmith in your area who can perform high-security key service. **58.** ToyotaCare covers normal factory scheduled maintenance for two years or 25,000 miles, whichever comes first. Certain models require a different maintenance schedule as described in their Maintenance Guide. 24-hour Roadside Assistance is also included for two years, unlimited mileage. Roadside Assistance does not include parts and fluids, except emergency fuel delivery. See Toyota dealer for details and exclusions. Valid only in the continental U.S.

Toyota strives to build vehicles to match customer interest and thus they typically are built with popular options and option packages. Not all options/packages are available separately and some may not be available in all regions of the country. See [toyota.com](http://toyota.com) for information about options/packages commonly available in your area. If you would prefer a vehicle without any or with different options, contact your dealer to check for current availability or the possibility of placing a special order.

Color(s) depicted may vary based on multiple factors, including ambient lighting and the format in which it is being viewed (e.g., computer, mobile device or print).

Some vehicles are shown with available equipment. Seatbelts should be worn at all times. For details on vehicle specifications, standard features and available equipment in your area, contact your Toyota dealer. A vehicle with particular equipment may not be available at the dealership. Ask your Toyota dealer to help locate a specifically equipped vehicle.

All information presented herein is based on data available at the time of posting, is subject to change without notice and pertains specifically to mainland U.S.A. vehicles only. Vehicles shown may be prototypes, shown using visual effects and/or shown with options. Actual models may vary.



**Mobility**

For Toyota Mobility program details, go to [www.toyota.com/mobility](http://www.toyota.com/mobility) or call the Toyota Brand Engagement Center at 1-800-331-4331