

CHEVROLET 



2022  
**TRAX**

# The small SUV with big ideas.

The 2022 Chevrolet Trax may be small on the outside, but it's the right size for just about any adventure.

Compact dimensions and maneuverability make it ideal for slipping in and out of tight parking spaces or navigating narrow streets. The new 1.4L Turbo engine offers more horsepower and torque than the previous powerplant. Inside, there's plenty of room for you and four friends. Or take advantage of the fold-flat rear seats when you want to bring some cargo along. Put it all together for a small SUV that's large enough for you to live your biggest life.



Trax LT interior in Jet Black with available features.

## INTRODUCING TRAX

### Trax at a glance.

- Compact and agile for city streets
- All models available with FWD or AWD
- New 1.4L Turbo engine with 155 horsepower and 177 lb.-ft. of torque
- EPA-estimated 24 MPG city/32 highway<sup>1</sup>
- Seating for up to five
- 48.4 cubic feet of maximum cargo space<sup>2</sup> with the rear seats folded flat
- 60/40 split-folding rear seat for passenger and cargo flexibility
- Apple CarPlay<sup>®3</sup> and Android Auto<sup>™4</sup> compatibility
- Available built-in Wi-Fi<sup>®</sup> Hotspot<sup>5</sup>
- 10 standard airbags<sup>6</sup>
- 5-Star Overall Vehicle Score for safety from the National Highway Traffic Safety Administration – eight years running<sup>7</sup>
- StabiliTrak<sup>®</sup> Electronic Stability Control System



48.4 cubic feet of maximum cargo space<sup>2</sup>



Trax LT in Silver Ice Metallic.

<sup>1</sup> EPA-estimated 24 MPG city/32 highway (FWD). EPA-estimated 23 MPG city/30 highway (AWD). <sup>2</sup> Cargo and load capacity limited by weight and distribution. <sup>3</sup> Vehicle user interface is a product of Apple and its terms and privacy statements apply. Requires compatible iPhone and data plan rates apply. <sup>4</sup> Vehicle user interface is a product of Google and its terms and privacy statements apply. Requires the Android Auto app on Google Play and a compatible Android smartphone. Data plan rates apply. You can check which smartphones are compatible at [g.co/androidauto/requirements](http://g.co/androidauto/requirements). <sup>5</sup> Service varies with conditions and location. Requires active service and paid AT&T data plan. Visit [onstar.com](http://onstar.com) for details and limitations. <sup>6</sup> A NOTE ON CHILD SAFETY: Always use seat belts and the correct child restraint for your child's age and size, even with airbags. Even in vehicles equipped with the Passenger Sensing System, children are safer when properly secured in a rear seat in the appropriate infant, child or booster seat. Never place a rear-facing infant restraint in the front seat of any vehicle equipped with an active frontal airbag. See your vehicle Owner's Manual and the child safety seat instructions for more safety information. <sup>7</sup> 2015–2022 model years. Government 5-Star Safety Ratings are part of the National Highway Traffic Safety Administration's (NHTSA's) New Car Assessment Program ([www.nhtsa.gov](http://www.nhtsa.gov)).

Apple CarPlay, iPhone, Siri and Apple Music are trademarks of Apple Inc., registered in the U.S. and other countries. Android, Google Play and Android Auto are trademarks of Google LLC.

## MODELS

### Two models to choose from.

You can't go wrong when you choose Trax as your traveling companion.



#### LS

Trax LS is the small SUV that fits into tight spaces and just about any budget.

- 1.4L Turbo engine and 6-speed automatic transmission
- Power-adjustable outside rearview mirrors
- 16-inch aluminum wheels
- Chevrolet Infotainment 3 system<sup>1</sup> with 7-inch diagonal color touch-screen
- 6-speaker audio system
- Two USB ports<sup>2</sup>
- Rear Vision Camera<sup>3</sup>
- Remote Keyless Entry
- SiriusXM<sup>®4</sup> 3-month trial subscription

#### LT

Take a step up in style, convenience and comfort in Trax LT.

- Roof-mounted luggage rack side rails
  - Remote vehicle starter system
  - Projector-style halogen headlamps
  - LED taillamps
  - Heated power-adjustable outside rearview mirrors
  - Front and rear fascia skid plates
  - Deep-tinted rear windows and liftgate glass
  - Cruise control
  - Deluxe Cloth/leatherette seating surfaces
- Midnight Edition available  
Redline Edition available  
Sport Edition available

<sup>1</sup> Chevrolet Infotainment System functionality varies by model. Full functionality requires compatible Bluetooth and smartphone, and USB connectivity for some devices. <sup>2</sup> Not compatible with all devices. <sup>3</sup> Safety or driver assistance features are no substitute for the driver's responsibility to operate the vehicle in a safe manner. Read the vehicle Owner's Manual for important feature limitations and information. <sup>4</sup> If you decide to continue service after your trial, your selected subscription plan will automatically renew thereafter. You will be charged at then-current rates. Fees and taxes apply. To cancel you must call SiriusXM at 1-866-635-2349. See SiriusXM Customer Agreement for complete terms at [siriusxm.com](http://siriusxm.com). All fees and programming subject to change.

## LS EXTERIOR COLORS



Summit White



Silver Ice Metallic



Shadow Gray Metallic



Stone Gray Metallic



Crimson Metallic



Black Cherry Metallic



Midnight Blue Metallic



Mosaic Black Metallic

## LS FEATURES



Select standard features:

### MECHANICAL

Engine – 1.4L Turbo DOHC 4-cylinder with Variable Valve Timing (VVT) and Direct Injection

Transmission – 6-speed automatic with overdrive and Driver Shift Control

### EXTERIOR

Daytime running lamps – reduced intensity low beam

Headlamps – halogen reflector with automatic on/off

Mirrors – power-adjustable, manual-folding, body-color with Black base

Wipers – front variable-speed, intermittent; rear intermittent with washer

### INTERIOR

Air conditioning – manual, single-zone with particle air filter

Door locks – power programmable with lockout protection and manual rear door child security

Driver Information Center – 3.5-inch diagonal monochromatic display

Entertainment – Chevrolet Infotainment 3 system<sup>1</sup> with 7-inch diagonal color touch-screen

Media – two USB ports<sup>2</sup> and auxiliary input jack

Rear Vision Camera<sup>3</sup>

Remote Keyless Entry – with panic alarm

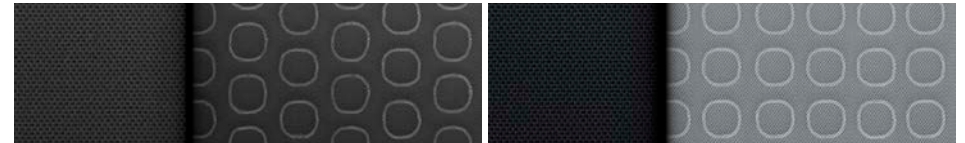
Seat – driver 4-way manual adjuster with power lumbar control and armrest  
– rear manual-folding 60/40 split-bench

Steering column – manual tilt and telescopic

Steering wheel – 3-spoke with mounted audio and phone controls

Theft-deterrent system – unauthorized entry

Windows – power with driver express-up/-down, all others express-down



Jet Black Cloth

Light Ash Gray Cloth (shown)



16" Aluminum Wheels  
Standard on LS

<sup>1</sup> Chevrolet Infotainment System functionality varies by model. Full functionality requires compatible Bluetooth and smartphone, and USB connectivity for some devices. <sup>2</sup> Not compatible with all devices. <sup>3</sup> Safety or driver assistance features are no substitute for the driver's responsibility to operate the vehicle in a safe manner. Read the vehicle Owner's Manual for important feature limitations and information.

## LT EXTERIOR COLORS



Summit White



Iridescent Pearl Tricoat<sup>1</sup>



Silver Ice Metallic



Shadow Gray Metallic



Stone Gray Metallic



Crimson Metallic



Black Cherry Metallic



Midnight Blue Metallic



Mosaic Black Metallic

<sup>1</sup>Extra-cost color.

## LT FEATURES



Select standard features:

### MECHANICAL

Engine – 1.4L Turbo DOHC 4-cylinder with Variable Valve Timing (VVT) and Direct Injection

Transmission – 6-speed automatic with overdrive and Driver Shift Control

### EXTERIOR

Daytime running lamps – LED

Glass – deep-tinted rear windows and liftgate

Headlamps – projector-style halogen with automatic on/off

Luggage rack – side rails, roof-mounted

Mirrors – heated, power-adjustable, manual-folding with body-color caps

Skid plates – front and rear fascia, Silver-painted

Taillamps – LED

### INTERIOR

Air conditioning – manual, single-zone with particle air filter

Cargo area – rigid security cover, removable

Cruise control – electronic with Set and Resume Speed

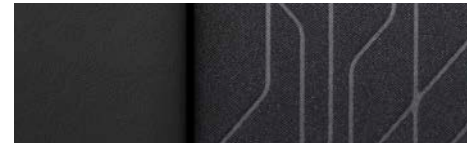
Entertainment – Chevrolet Infotainment 3 system<sup>1</sup> with 7-inch diagonal color touch-screen

Power outlet – 120-volt on rear of center console

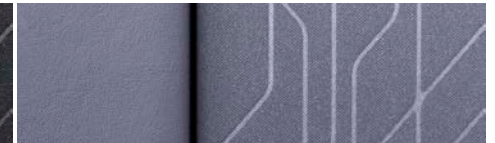
Remote vehicle starter system

Steering wheel – 3-spoke with mounted audio, cruise and phone controls

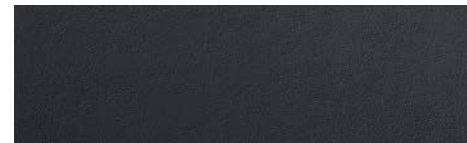
Storage – front passenger underseat drawer



Jet Black Deluxe Cloth/Leatherette Seating Surfaces



Light Ash Gray Deluxe Cloth/Leatherette Seating Surfaces



Jet Black Leatherette Seating Surfaces (shown)<sup>2</sup>



Light Ash Gray Leatherette Seating Surfaces<sup>2</sup>



16" Aluminum Wheels  
Standard on LT



18" Gloss Black Aluminum Wheels  
Available on LT with Midnight Edition or Sport Edition



18" Black-Finish Aluminum Wheels with Red Accent Stripes  
Available on LT with Redline Edition

<sup>1</sup> Chevrolet Infotainment System functionality varies by model. Full functionality requires compatible Bluetooth and smartphone, and USB connectivity for some devices. <sup>2</sup> Requires available Premium Seat Package.



## SPECIFICATIONS

● STANDARD ○ AVAILABLE – NOT AVAILABLE

	LS	LT
<b>SAFETY AND DRIVER ASSISTANCE</b>		
Airbags <sup>1</sup> – frontal and knee airbags for driver and front passenger; seat-mounted side-impact airbags and head-curtain airbags for front and rear outboard seating positions; includes Passenger Sensing System for passenger-side frontal and knee airbags	●	●
LATCH system (Lower Anchors and Tethers for CHildren) – for child restraint systems	●	●
Rear Cross Traffic Alert <sup>2</sup> (requires available Driver Confidence Package)	–	○
Rear Park Assist <sup>2</sup> (requires available Driver Confidence Package)	–	○
Rear Vision Camera <sup>2</sup>	●	●
Side Blind Zone Alert <sup>2</sup> (requires available Driver Confidence Package)	–	○
Theft-deterrent system – unauthorized entry	●	●
Tire Pressure Monitoring System (does not monitor spare tire)	●	●
Up to 3 months of OnStar <sup>®</sup> Safety & Security coverage <sup>3</sup>	●	●
<b>MECHANICAL</b>		
Brakes – 4-wheel antilock	●	●
– front disc/rear drum (FWD)	●	●
– 4-wheel disc (AWD)	○	○
Drive – front-wheel drive (FWD)	●	●
– all-wheel drive (AWD)	○	○
Engine – 1.4L Turbo DOHC 4-cylinder with Variable Valve Timing (VVT) and Direct Injection; 155 hp @ 5600 rpm, 177 lb.-ft. of torque @ 2000–4000 rpm	●	●
StabiliTrak – Electronic Stability Control System with Traction Control; includes Hill Start Assist	●	●
Steering – power, electric, rack-and-pinion	●	●
Suspension – front MacPherson strut	●	●
– rear compound crank	●	●
Transmission – 6-speed automatic with overdrive and Driver Shift Control	●	●

	LS	LT
<b>EXTERIOR</b>		
Chevrolet bowtie emblems – Black (requires available Midnight Edition, Redline Edition or Sport Edition)	–	○
Daytime running lamps – reduced intensity low beam	●	–
– LED	–	●
Glass – solar-absorbing	●	●
– deep-tinted rear windows and liftgate (requires available Tint and Cruise Package on LS)	○	●
Headlamps – halogen reflector with automatic on/off	●	–
– projector-style halogen with automatic on/off	–	●
Luggage rack – side rails, roof-mounted	–	●
Mirrors – power-adjustable, manual-folding, body-color with Black base	●	–
– heated, power-adjustable, manual-folding with body-color caps	–	●
Moldings – Black beltline (requires available Midnight Edition, Redline Edition or Sport Edition on LT)	●	○
– chrome beltline	–	●
Skid plates – front and rear fascia, Silver-painted	–	●
Taillamps – LED	–	●
Tires – P205/70R16 all-season	●	●
– P215/55R18 all-season (requires available Midnight Edition, Redline Edition or Sport Edition)	–	○
– compact spare	●	●
Wheels – 16" aluminum	●	●
– 18" gloss Black aluminum (requires available Midnight Edition or Sport Edition)	–	○
– 18" Black-finish aluminum with Red accent stripes (requires available Redline Edition)	–	○
Wipers – front variable-speed, intermittent; rear intermittent with washer	●	●

<sup>1</sup> A NOTE ON CHILD SAFETY: Always use seat belts and the correct child restraint for your child's age and size, even with airbags. Even in vehicles equipped with the Passenger Sensing System, children are safer when properly secured in a rear seat in the appropriate infant, child or booster seat. Never place a rear-facing infant restraint in the front seat of any vehicle equipped with an active frontal airbag. See your vehicle Owner's Manual and the child safety seat instructions for more safety information.

<sup>2</sup> Safety or driver assistance features are no substitute for the driver's responsibility to operate the vehicle in a safe manner. Read the vehicle Owner's Manual for important feature limitations and information. <sup>3</sup> When you select a monthly plan within 30 days of activating your 1-month trial, you'll receive the next 2 months of the plan you select at no additional charge when you associate an approved payment method on file to your account and authorize recurring payments for your service plan. The amount and frequency of each recurring payment is based upon the service(s) and payment interval(s) you select from the options provided. After the trial expires, OnStar will automatically bill your payment method monthly at then-current standard monthly rates. Plans containing 4G LTE data will be billed every 30 days by AT&T. You may cancel at any time by pushing your blue OnStar button or calling 1-888-466-7827. May not be combined with other offers or retroactively applied. Offer subject to change.

## SPECIFICATIONS (CONTINUED)

● STANDARD ○ AVAILABLE – NOT AVAILABLE

	LS	LT
<b>INTERIOR</b>		
Air conditioning – manual, single-zone with particle air filter	●	●
Assist handles – overhead, all outboard seating positions	●	●
Cargo area – storage tray under rear floor	●	●
– four tie-downs	●	●
– rigid security cover, removable	–	●
Compass display – located in Driver Information Center	●	●
Cruise control – electronic with Set and Resume Speed (requires available Tint and Cruise Package on LS)	○	●
Door locks – power programmable with lockout protection and manual rear door child security	●	●
Driver Information Center – 3.5-inch diagonal monochromatic display	●	●
Floor mats – carpeted front and rear	●	●
Lighting – overhead courtesy, front reading lamps and cargo area	●	●
Power outlet – 120-volt, on rear of center console	–	●
Remote Keyless Entry – with panic alarm	●	●
– Keyless Open and Start (requires available LT Convenience Package)	–	○
Remote vehicle starter system	○	●
Steering column – manual tilt and telescopic	●	●
Steering wheel – 3-spoke with mounted audio and phone controls	●	●
– 3-spoke with mounted cruise controls (requires available Tint and Cruise Package on LS)	○	●
– 3-spoke leather-wrapped (requires available LT Convenience Package)	–	○
Temperature display – outside	●	●
Visors – driver and front passenger, covered vanity mirrors	●	●
Windows – power with driver express-up/-down, all others express-down	●	●

	LS	LT
<b>SEATING</b>		
Seats – front bucket with seatback map pocket	●	●
– rear manual-folding 60/40 split-bench	●	●
Seat – driver 4-way manual adjuster with power lumbar control and armrest	●	●
– driver 6-way power adjuster with power lumbar control (requires available LT Convenience Package)	–	○
Heated front seats (requires available Premium Seat Package)	–	○
Storage – front passenger underseat drawer	–	●
<b>ENTERTAINMENT</b>		
Chevrolet Infotainment 3 system <sup>1</sup> with 7-inch diagonal color touch-screen, AM/FM stereo, Bluetooth <sup>®</sup> audio streaming <sup>2</sup> for two active devices, voice command pass-through to compatible phone, and Apple CarPlay <sup>®3</sup> and Android Auto <sup>™4</sup> compatibility	●	●
Audio – 6-speaker system	●	●
Media – two USB ports <sup>5</sup> and auxiliary input jack	●	●
SiriusXM <sup>®6</sup> – 3-month trial subscription	●	●
Available Wi-Fi <sup>®</sup> Hotspot <sup>7</sup> for up to seven devices, includes 1 month of unlimited data	○	○
Chevrolet Connected Access <sup>8</sup> with up to 10 years of standard connectivity, which currently enables features such as Vehicle Diagnostics and Dealer Maintenance Notification	●	●

<sup>1</sup> Chevrolet Infotainment System functionality varies by model. Full functionality requires compatible Bluetooth and smartphone, and USB connectivity for some devices. <sup>2</sup> Go to [my.chevrolet.com/learnAbout/bluetooth](http://my.chevrolet.com/learnAbout/bluetooth) to find out which phones are compatible with the vehicle. Full Bluetooth feature functionality varies by device, model and software version. <sup>3</sup> Vehicle user interface is a product of Apple and its terms and privacy statements apply. Requires compatible iPhone and data plan rates apply. <sup>4</sup> Vehicle user interface is a product of Google and its terms and privacy statements apply. Requires the Android Auto app on Google Play and a compatible Android smartphone. Data plan rates apply. You can check which smartphones are compatible at [g.co/androidauto/requirements](http://g.co/androidauto/requirements). <sup>5</sup> Not compatible with all devices. <sup>6</sup> If you decide to continue service after your trial, your selected subscription plan will automatically renew thereafter. You will be charged at then-current rates. Fees and taxes apply. To cancel you must call SiriusXM at 1-866-635-2349. See SiriusXM Customer Agreement for complete terms at [siriusxm.com](http://siriusxm.com). All fees and programming subject to change. <sup>7</sup> Service varies with conditions and location. Requires active service and paid AT&T data plan. Visit [onstar.com](http://onstar.com) for details and limitations. Availability subject to change. <sup>8</sup> Standard connectivity available only to original purchaser for up to 10 years. Connected Access services are subject to change. Does not include emergency or security services. Diagnostic capabilities vary by model and service plan. Message and data rates may apply. Requires contact method on file and enrollment to receive alerts. Not all issues will deliver alerts. Visit [onstar.com](http://onstar.com) for details and limitations.

## SPECIFICATIONS (CONTINUED)



Midnight Edition.



Redline Edition.



Sport Edition.

● STANDARD ○ AVAILABLE – NOT AVAILABLE

	LS	LT
<b>PACKAGES AND SPECIAL EDITIONS</b>		
<b>Tint and Cruise Package</b>	○	–
Deep-tinted rear windows and liftgate, and cruise control		
<b>Driver Confidence Package<sup>1</sup></b>	–	○
Side Blind Zone Alert, Rear Cross Traffic Alert and Rear Park Assist (requires available LT Convenience Package)		
<b>LT Convenience Package</b>	–	○
Keyless Open and Start, 6-way power driver-seat adjuster, and 3-spoke leather-wrapped steering wheel		
<b>Premium Seat Package</b>	–	○
Leatherette seating surfaces and heated driver and front passenger seats (requires available LT Convenience Package)		
<b>Midnight Edition</b>	–	○
18" gloss Black aluminum wheels, P215/55R18 all-season tires, Black front and rear fascia skid plates, Black bowtie emblems, Black beltline moldings and Black door handles (requires available LT Convenience Package, Mosaic Black Metallic exterior color and Jet Black interior color)		
<b>Redline Edition</b>	–	○
18" Black-finish aluminum wheels with Red accent stripes, P215/55R18 all-season tires, Black bowtie emblems, Black grille with Black surround, Black mirror caps, Black beltline moldings and Black Trax badge with Red outline (requires available LT Convenience Package and Jet Black interior color; available with Summit White, Silver Ice Metallic or Mosaic Black Metallic exterior colors)		
<b>Sport Edition</b>	–	○
18" gloss Black aluminum wheels, P215/55R18 all-season tires, Black front and rear fascia skid plates, Black bowtie emblems and Black beltline moldings (requires available LT Convenience Package and Jet Black interior color; not available with Mosaic Black Metallic exterior color)		

<sup>1</sup> Safety or driver assistance features are no substitute for the driver's responsibility to operate the vehicle in a safe manner. Read the vehicle Owner's Manual for important feature limitations and information.

## SPECIFICATIONS (CONTINUED)

### MAXIMUM CAPACITIES

Fuel tank (approximate)	14 gallons
Passenger volume	98.2 cubic feet
Seating (front/rear)	Seats 2/3
Cargo volume <sup>1</sup>	Behind second-row seat: 18.7 cubic feet Behind front seats: 48.4 cubic feet

### DIMENSIONS

Wheelbase	100.6"
Length	167.6"
Height	64.9" – LS FWD 65.2" – LS AWD 66.0" – LT FWD 66.3" – LT AWD

### EPA-ESTIMATED FUEL ECONOMY

1.4L Turbo FWD	24 MPG city/32 highway/27 combined
1.4L Turbo AWD	23 MPG city/30 highway/26 combined

Front track	60.6"
Rear track	60.6"
Width	69.9"

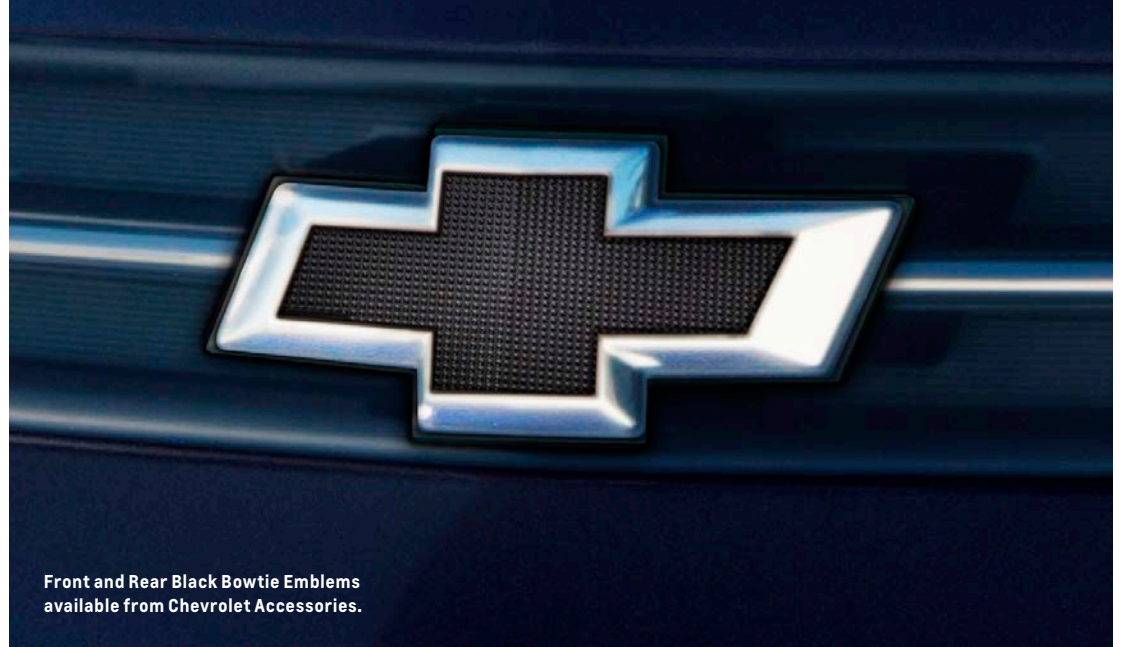
Head room (front/rear)	39.6"/38.8"
Leg room (front/rear)	40.8"/35.7"
Shoulder room (front/rear)	54.1"/52.8"
Hip room (front/rear)	51.7"/50.7"

<sup>1</sup> Cargo and load capacity limited by weight and distribution.

## ACCESSORIES



All-Weather Floor Liners available from Chevrolet Accessories.



Front and Rear Black Bowtie Emblems available from Chevrolet Accessories.



Premium All-Weather Cargo Tray available from Chevrolet Accessories.



Front and Rear Splash Guards available from Chevrolet Accessories.

## IMPORTANT INFORMATION



## Every step of the way.

You may be discovering Chevrolet through a personalized online shopping experience or enjoying every year of vehicle ownership. Either way, we're committed to providing the tools and programs you need to help you get the most out of your journey.

### › **Build & Price**

Create your perfect Chevrolet from start to finish.

### › **Chevy MyWay<sup>1</sup>**

Engage in a real-time virtual video experience with a Chevy product specialist.

### › **Chevrolet Complete Care**

Enjoy an owner benefit program that provides excellent service and support from day one.

### › **My Chevrolet Rewards**

It's free to join<sup>2</sup> and you can earn and redeem on almost everything you do with Chevrolet.

### › **Limited Warranty Coverage**

Discover all the ways Chevrolet is committed to providing an excellent ownership experience.



GM, the GM logo, Chevrolet, the Chevrolet logo, and the slogans, emblems, vehicle model names, vehicle body designs and other marks appearing in this brochure are the trademarks and/or service marks of General Motors, its subsidiaries, affiliates or licensors. ©2021 OnStar LLC. All rights reserved. Sirius, XM, SiriusXM and all related marks and logos are trademarks of Sirius XM Radio Inc. The Bluetooth word mark is a registered trademark owned by Bluetooth SIG, Inc., and any use of such mark by Chevrolet is under license.

©2021 General Motors. All rights reserved. July 2021

**FIND NEW ROADS™**

**CHEVROLET.COM**

<sup>1</sup> Chevy MyWay is available to anyone over 18 in the United States to access and experience via [chevrolet.com/myway](https://chevrolet.com/myway). <sup>2</sup> Must be 18 years or older. Points may be earned and redeemed only at participating GM entities, dealers or third party retailers in the United States (excluding Puerto Rico, the U.S. Virgin Islands or Guam). Points are not earned on taxes or certain fees, and expire 5 years from when points are earned. Some restrictions apply. For more information, please view full program Terms & Conditions.