



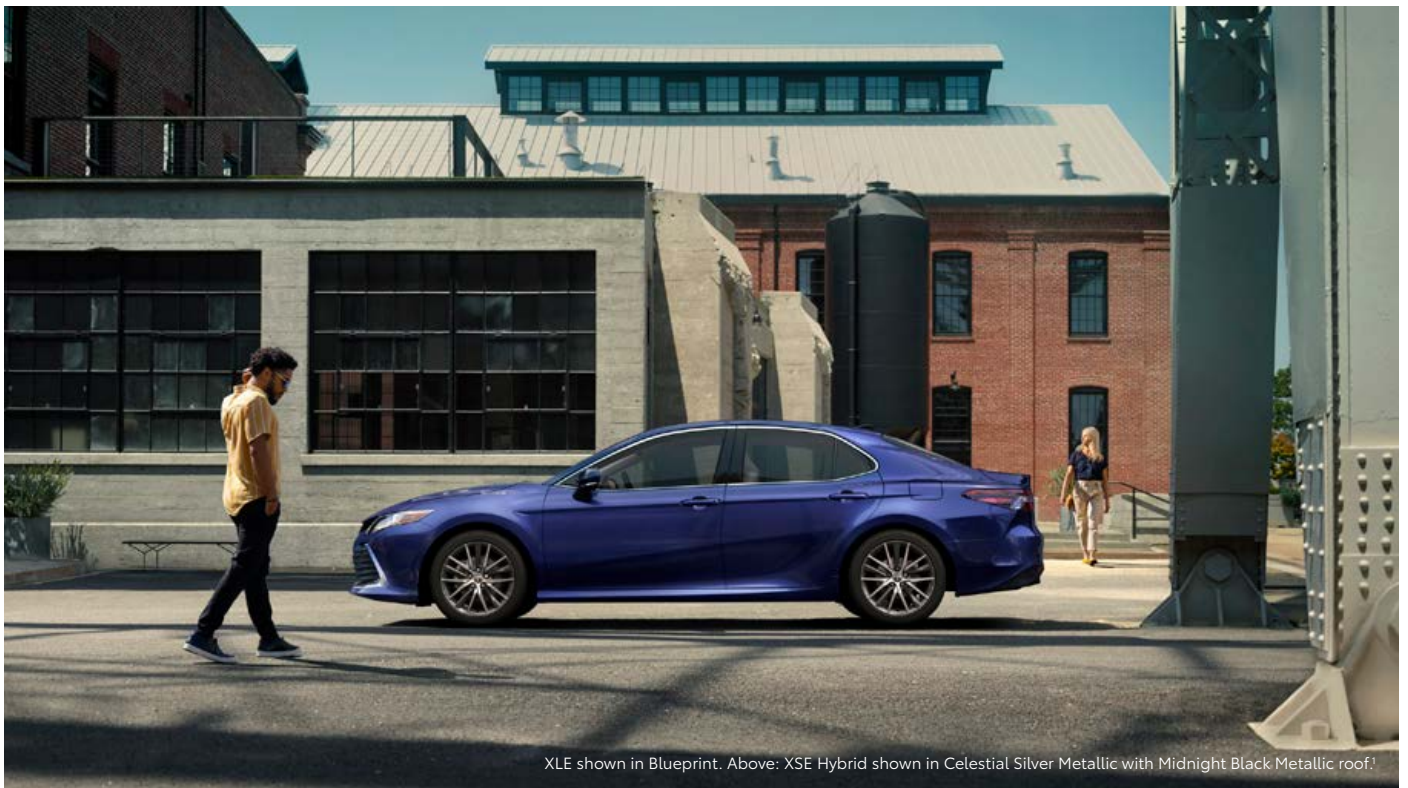
TOYOTA

2021 Camry

2021 CAMRY

Meet your Camry match.

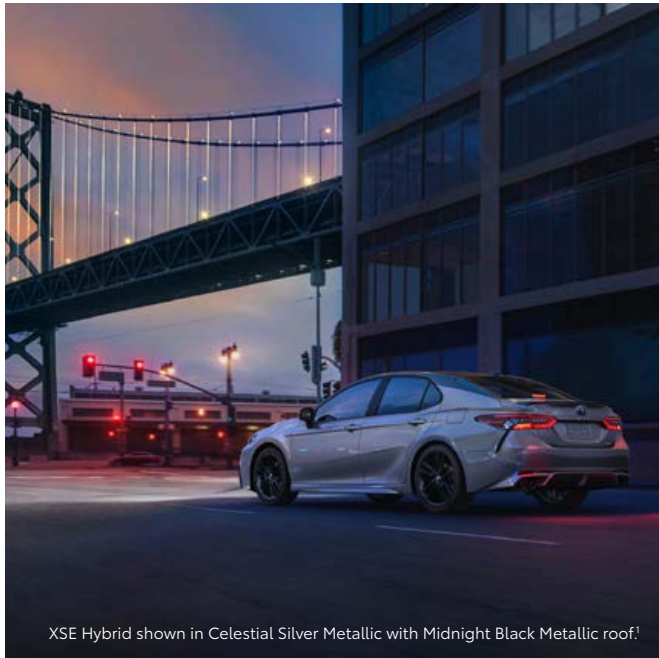
The 2021 Toyota Camry takes the midsize sedan with all its convenience and evolves it for the better. With the driver in mind, Camry comes in a wide range of models, so there's a perfect match for you. Whether giving your adventures a confidence boost with available All-Wheel Drive (AWD) capability or taking your daily commutes as far as they can with hybrid efficiency, there's a Camry fit for your lifestyle.



XLE shown in Blueprint. Above: XSE Hybrid shown in Celestial Silver Metallic with Midnight Black Metallic roof.¹



See numbered footnotes in Disclosures section.



XSE Hybrid shown in Celestial Silver Metallic with Midnight Black Metallic roof.¹

PERFORMANCE

More than capable.

By taking advantage of the light and strong Toyota New Global Architecture (TNGA) platform, Camry is engineered for optimized handling and ride quality. And with a low, wide stance, Camry delivers a crisp and responsive feel. Indulge your sporty side and take the long way home.

All-Wheel Drive

Available All-Wheel Drive (AWD) performance gives you peace of mind, no matter the forecast. When sensing slippage at the front wheels, Camry AWD can send up to 50% of the torque to the rear wheels for more grip in gravel, rain or snow.



XSE AWD shown in Superonic Red with Midnight Black Metallic roof.¹

Impressive 4-cylinder and V6 engines

Camry offers a compelling choice of gasoline engines: a proficient 2.5-liter Dynamic Force 4-cylinder and a robust 3.5-liter V6, each delivering a quality blend of performance and efficiency.



XSE V6 shown in Wind Chill Pearl and Midnight Black Metallic roof with available Driver Assist Package.¹

Hybrid performance

Get the best of both worlds. Camry Hybrid's Dynamic Force 4-cylinder engine, along with a proven electric motor and smooth-shifting transmission, produces ample torque and has an EPA-estimated rating of 46 mpg combined.² And with available, newly designed 19-in. wheels, Camry XSE Hybrid proves it doesn't sacrifice style.



XSE Hybrid shown in Celestial Silver Metallic with Midnight Black Metallic roof.¹



TRD shown in Ice Edge with Midnight Black Metallic roof.

TRD

Not your average four-door.

We've turned our Toyota Racing Development (TRD) engineers loose on Camry, improving handling, performance and styling. Aerodynamic elements, from the front splitter and the side aero skirts to the rear diffuser and spoiler, boost Camry TRD's bold impression and help improve high-speed stability.



Left to right: TRD shown in Wind Chill Pearl with Midnight Black Metallic roof;¹ XSE V6 shown in Supersonic Red.¹



TRD 19-in. alloy wheels with red-painted calipers

Matte-black alloy wheels on TRD not only look good, but also reduce weight and enhance steering responsiveness. Large 12.9-in.-diameter front rotors and red-painted dual-piston front calipers give you impressive stopping power on every twist and turn.



TRD purposeful stance

TRD-tuned shocks help improve body control, handling agility and steering precision. Thicker underbody braces increase torsional rigidity, and unique coil springs not only drop the vehicle .60 inches for a lower center of gravity, but also enhance the aero kit's downforce and aggressive look.



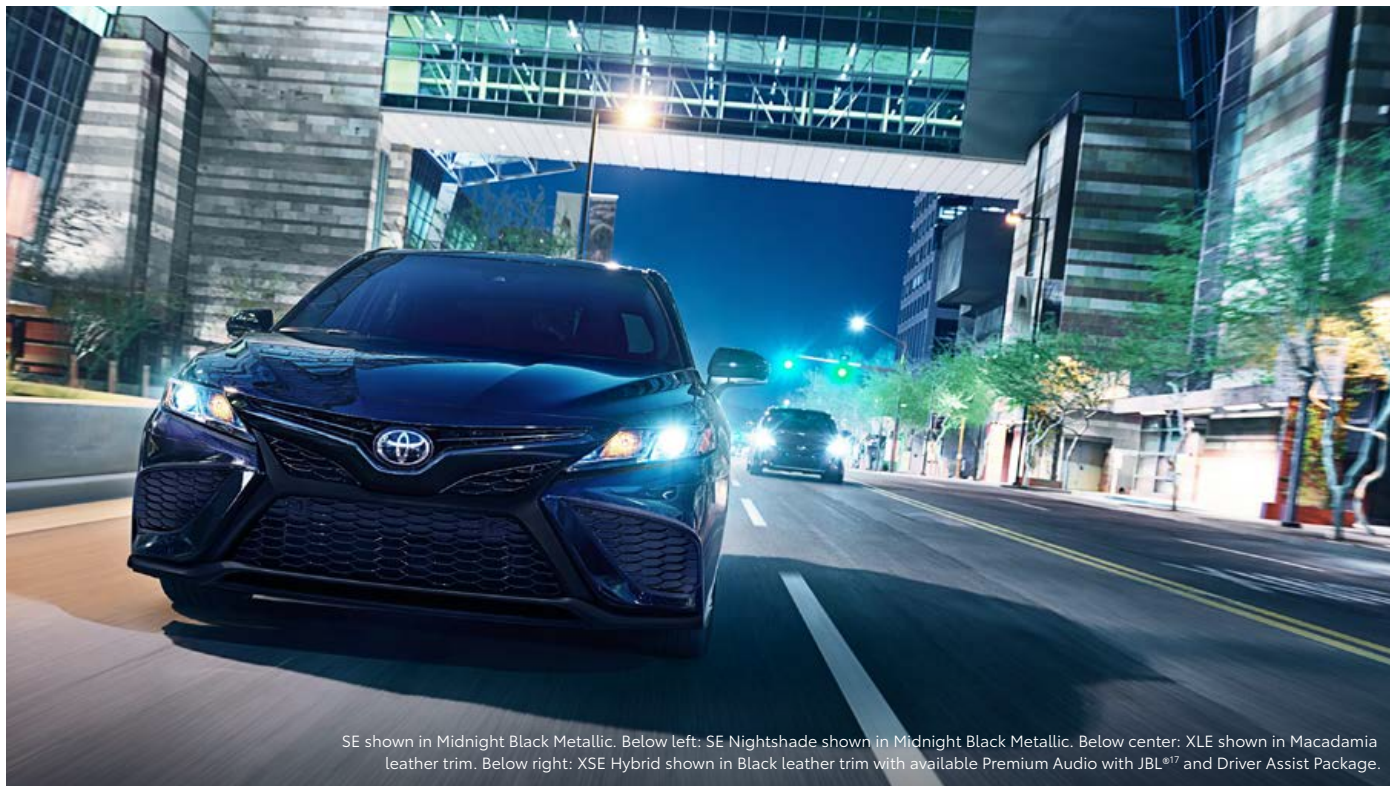
TRD cat-back dual exhaust

Hit the gas and enjoy the sound of TRD's standard 301-hp 3.5L V6. The cat-back dual exhaust reduces back pressure and helps optimize efficiency and power. Polished stainless steel TRD exhaust tips punctuate its athletic look.

DESIGN

Leave a lasting impression.

Camry's powerful stance and available black front grille with sport mesh insert announce your arrival with authority. At night, you'll immediately notice Camry XLE and XSE's LED headlights and fully integrated LED Daytime Running Lights (DRL) that add an illuminating touch.

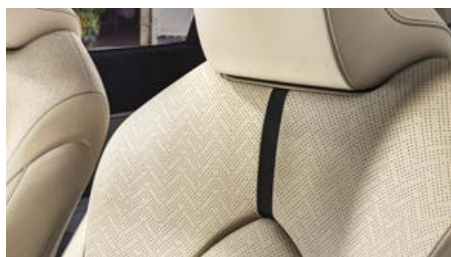


SE shown in Midnight Black Metallic. Below left: SE Nightshade shown in Midnight Black Metallic. Below center: XLE shown in Macadamia leather trim. Below right: XSE Hybrid shown in Black leather trim with available Premium Audio with JBL^{®17} and Driver Assist Package.



Camry SE Nightshade Edition

Show off Camry's dark side with Camry Nightshade Edition. Aggressive black 18-in. wheels, window trim and badging complement this Special Edition's evocative design.



Seat details

Finally, a sedan that speaks to your sense of style. Updates to the interior trim, along with a new herringbone seat pattern on XLE, let you personalize the finishing touches. Such finely crafted details ensure Camry will leave a lasting impression.



Floating touchscreen display

With Camry's perfectly placed steering wheel controls, everything you want is right at your fingertips. The new floating display with an available 9-in. multimedia touchscreen offers Apple CarPlay^{®3} support for your iPhone^{®4} or Android Auto^{™5} integration.

Amplify your drive.

Take advantage of smarter and convenient technologies designed to simplify your everyday life. From a suite of services that are there for you 24/7 to an immersive audio multimedia system, you can stay connected to your world.



Connected Services

Our available suite of Connected Services⁶ provides added convenience and peace of mind.

- ✓ **Safety Connect[®]**
Emergency SOS assistance and 24/7 Toyota Roadside Assistance.^{7, 8}
- ✓ **Service Connect**
Get personalized maintenance updates and vehicle health reports.⁹
- ✓ **Remote Connect**
Start, lock/unlock your doors and more, using your compatible smart device.¹⁰
- ✓ **Wi-Fi Connect**
Turn your Toyota into a hotspot with 4G connectivity.¹¹
- ✓ **Destination Assist**
24/7 live agent assistance to locate your next destination!²

To view included trial details, please visit toyota.com/connected-services.

Audio Multimedia

Make every drive more personal. By utilizing your vehicle's touchscreen display and audio multimedia capabilities, you'll always have access to what you want. Whether it's listening to your favorite playlist or finding the most scenic route to your destination, you'll enjoy the latest in connectivity and technologies that are all about you.



Apple CarPlay[®]

Bring along a familiar face. With Apple CarPlay^{®3} compatibility, you can use your compatible iPhone^{®4} with the audio multimedia system to get directions, make calls, send and receive messages, and listen to music — all while staying focused on your commute.



Android Auto[™]

Stay connected on the road. By pairing your compatible Android^{™13} phone with the audio multimedia system, Android Auto[™] lets you access your Google Assistant,⁵ get real-time traffic alerts, make and receive phone calls, listen to your favorite soundtrack and more.⁵



SiriusXM[®] All Access 3-month trial subscription

Enjoy listening to what you want to hear. With SiriusXM,^{®14} you get the deepest variety of ad-free music, more sports coverage than anywhere else, exclusive talk channels, every kind of comedy, and the most complete news coverage.¹⁵



Amazon Alexa

Almost anywhere the road takes you, Amazon Alexa¹⁶ connectivity follows. With a smartphone connection and the Toyota+Alexa app, all you have to do is ask Alexa to play music, listen to audiobooks, hear the news, check weather, control smart-home devices and more.



JBL[®]

Feel the difference and hear the truth. Designed specifically for Toyota, JBL^{®17} finely tunes each speaker to the interior of the vehicle. Just turn up the volume to hear the crisp, rich, vibrant sound come through.



TOYOTA SAFETY SENSE™ 2.5+ (TSS 2.5+)

Peace of mind comes standard.

Toyota Safety Sense™ 2.5+ (TSS 2.5+)¹⁸ is the latest bundle of active safety features included on many new Toyota vehicles at no additional cost. These innovative features were designed to help protect you and your passengers from harm.



Pre-Collision System with Pedestrian Detection¹⁹



Full-Speed Range Dynamic Radar Cruise Control²⁰



Lane Departure Alert with Steering Assist²¹



Automatic High Beams²²



Lane Tracing Assist²³



Road Sign Assist²⁴

CAMRY MODELS



LE

Includes these key features

Mechanical/Performance

- ✓ 2.5L 4-Cylinder with 203 hp
- ✓ 8-speed Electronically Controlled automatic Transmission with intelligence (ECT-i) with sequential shift mode
- ✓ Front-Wheel Drive (FWD)
- ✓ Available All-Wheel Drive (AWD)
- ✓ 28 city/39 highway/32 combined EPA-est. mpg²

Exterior Features

- ✓ Bi-LED combination headlights with auto on/off feature
- ✓ LED combination taillights with black accents
- ✓ Dark gray front grille
- ✓ 17-in. alloy wheels
- ✓ Shark-fin antenna

Interior Features

- ✓ Seating for five
- ✓ Fabric-trimmed seats
 - 8-way power-adjustable driver's seat
 - 60/40 split fold-down rear seat
- ✓ 4.2-in. Multi-Information Display (MID)
- ✓ Remote keyless entry system
- ✓ Linear dark interior trim
- ✓ Three USB ports²⁵

Audio Multimedia

- ✓ Audio includes:
 - 7-in. touchscreen and six speakers
 - Android Auto^{TM5} & Apple CarPlay^{®3} compatible
 - SiriusXM^{®14} with 3-month All Access trial subscription¹⁵
- ✓ Connected Services⁶ with Safety Connect^{®7}

Safety Features

- ✓ Toyota Safety Sense 2.5+ (TSS 2.5+)¹⁸
- ✓ Dynamic Radar Cruise Control (DRCC)²⁶
- ✓ Star Safety SystemTM
- ✓ Ten airbags²⁷
- ✓ Tire Pressure Monitor System (TPMS)²⁸

Packages/Options

- ✓ Convenience Package includes:
 - Smart Key System²⁹
 - HomeLink^{®30} universal transceiver
 - Auto-dimming rearview mirror
- ✓ Audio Upgrade Package includes:
 - Audio Plus with 9-in. touchscreen
 - Qi-compatible wireless charging³¹
 - Dual zone automatic climate control
- ✓ Cold Weather Package includes:
 - Heated front seats
 - Heated power outside mirrors
 - Heated steering wheel
- ✓ Blind Spot Monitor (BSM)³² with Rear Cross-Traffic Alert (RCTA)³³
- ✓ Power tilt/slide moonroof



XLE

Adds to or replaces features offered on LE

Mechanical/Performance

- ✓ Normal, ECO, and Sport drive modes
- ✓ Available All-Wheel Drive (AWD)
- ✓ 27 city/38 highway/31 combined EPA-est. mpg²

Exterior Features

- ✓ LED headlights and LED DRL with auto on/off feature
- ✓ LED taillights with black accents
- ✓ Dark gray front grille with chrome accents
- ✓ 18-in. dark gray machined-finish alloy wheels
- ✓ Color-keyed heated power outside mirrors

Interior Features

- ✓ Dual zone automatic climate control
- ✓ Leather-trimmed seats
 - Heated front seats
 - Rear adjustable headrests
- ✓ Leather-trimmed tilt/telescopic steering wheel
- ✓ 7-in. Multi-Information Display (MID)
- ✓ Smart Key System²⁹ with Push Button Start
- ✓ Qi-compatible wireless charging³¹
- ✓ Wood inlay interior trim
- ✓ Ambient interior lighting

Audio Multimedia

- ✓ Audio Plus includes:
 - 9-in. touchscreen and six speakers
 - Android Auto^{TM5} & Apple CarPlay^{®3} compatible
 - SiriusXM^{®14} with 3-month All Access trial subscription¹⁵
- ✓ Connected Services⁶ with Safety Connect^{®7}

Safety Features

- ✓ Toyota Safety Sense 2.5+ (TSS 2.5+)¹⁸
- ✓ Full-Speed Dynamic Radar Cruise Control (DRCC)²⁰
- ✓ Star Safety SystemTM
- ✓ Ten airbags²⁷
- ✓ Tire Pressure Monitor System (TPMS)²⁸ with direct pressure readout

Packages/Options

- ✓ Navigation Upgrade Package³⁴ includes:
 - Premium Audio, Dynamic Navigation³⁴ with 3-year trial³⁵
 - Nine JBL^{®17} speakers including subwoofer and amplifier
- ✓ Driver Assist Package includes:
 - 10-in. color Head-Up Display (HUD)
 - Bird's Eye View Camera³⁶
 - Intelligent Clearance Sonar (ICS)³⁷ with Rear Cross-Traffic Braking (RCTB)³⁸
 - Ventilated front seats
- ✓ Cold Weather Package includes:
 - Heated steering wheel
- ✓ Panoramic glass roof with front power tilt/slide moonroof



XLE V6

Adds to or replaces features offered on XLE

Mechanical/Performance

- ✓ 3.5L V6 with 301 hp
- ✓ 22 city/33 highway/26 combined EPA-est. mpg²

Exterior Features

- ✓ Panoramic glass roof with front power tilt/slide moonroof
- ✓ Dual exhaust with chrome finisher

Interior Features

- ✓ 10-in color Head-Up Display (HUD)
- ✓ Dual sun visors with sliding extensions and illuminated vanity mirrors

Audio Multimedia

- ✓ Audio Plus with JBL^{®17} includes:
 - 9-in. touchscreen and nine JBL^{®17} speakers including subwoofer and amplifier
 - Android Auto^{TM5} & Apple CarPlay^{®3} compatible
 - SiriusXM^{®14} with 3-month All Access trial subscription¹⁵
- ✓ Connected Services⁶ with Safety Connect^{®7}

Safety Features

- ✓ Toyota Safety Sense 2.5+ (TSS 2.5+)¹⁸
- ✓ Full-Speed Dynamic Radar Cruise Control (DRCC)²⁰
- ✓ Star Safety SystemTM
- ✓ Ten airbags²⁷
- ✓ Tire Pressure Monitor System (TPMS)²⁸ with direct pressure readout

Packages/Options

- ✓ Navigation Upgrade Package³⁴ includes:
 - Premium Audio, Dynamic Navigation³⁴ with 3-year trial³⁵
 - Nine JBL^{®17} speakers including subwoofer and amplifier
- ✓ Driver Assist Package includes:
 - Bird's Eye View Camera³⁶
 - Intelligent Clearance Sonar (ICS)³⁷ with Rear Cross-Traffic Braking (RCTB)³⁸
 - Ventilated front seats
- ✓ Cold Weather Package includes:
 - Heated steering wheel

CAMRY MODELS



SE

Includes these key features

Mechanical/Performance

- ✓ Available All-Wheel Drive (AWD)
- ✓ 28 city/39 highway/32 combined EPA-est. mpg²

Exterior Features

- ✓ Bi-LED combination headlights with black accents and auto on/off feature
- ✓ Black front grille with sport mesh insert
- ✓ Color-keyed sport side rocker panels
- ✓ 18-in. black machined-finish alloy wheels
- ✓ Color-keyed rear spoiler
- ✓ Single exhaust with dual chrome tips

Interior Features

- ✓ Single-zone automatic climate control
- ✓ Sport SofTex®-trimmed³⁹ front seats
- ✓ Leather-trimmed tilt/telescopic steering wheel with paddle shifters

Audio Multimedia

- ✓ Audio includes:
 - 7-in. touchscreen and six speakers
 - Android Auto™⁵ & Apple CarPlay™³ compatible
 - SiriusXM®¹⁴ with 3-month All Access trial subscription¹⁵
- ✓ Connected Services⁶ with Safety Connect™⁷

Safety Features

- ✓ Toyota Safety Sense 2.5+ (TSS 2.5+)¹⁸
- ✓ Dynamic Radar Cruise Control (DRCC)²⁶
- ✓ Star Safety System™
- ✓ Ten airbags²⁷
- ✓ Tire Pressure Monitor System (TPMS)²⁸ with direct pressure readout

Packages/Options

- ✓ Convenience Package includes:
 - Smart Key System²⁹
 - HomeLink®³⁰ universal transceiver
 - Auto-dimming rearview mirror
- ✓ Audio Upgrade Package includes:
 - Audio Plus with 9-in. touchscreen
 - Qi-compatible wireless charging³¹
 - Dual zone automatic climate control
- ✓ Cold Weather Package includes:
 - Heated front seats
 - Heated power outside mirrors
 - Heated steering wheel
- ✓ Blind Spot Monitor (BSM)³² with Rear Cross-Traffic Alert (RCTA)³³
- ✓ Power tilt/slide moonroof



SE Nightshade Edition

Adds to or replaces features offered on SE

Mechanical/Performance

- ✓ Available All-Wheel Drive (AWD)
- ✓ 28 city/39 highway/32 combined EPA-est. mpg²

Exterior Features

- ✓ Black-painted power outside mirrors, door handles, and window trim
- ✓ 18-in. black-painted alloy wheels
- ✓ Black-painted rear spoiler
- ✓ Black-painted shark fin antenna
- ✓ Black rear Toyota emblem and "CAMRY" lettering
- ✓ Black SE grade badge

Interior Features

- ✓ Single-zone automatic climate control
- ✓ Sport SofTex®-trimmed³⁹ front seats
- ✓ Leather-trimmed tilt/telescopic steering wheel with paddle shifters

Audio Multimedia

- ✓ Audio includes:
 - 7-in. touchscreen and six speakers
 - Android Auto™⁵ & Apple CarPlay™³ compatible
 - SiriusXM®¹⁴ with 3-month All Access trial subscription¹⁵
- ✓ Connected Services⁶ with Safety Connect™⁷

Safety Features

- ✓ Toyota Safety Sense 2.5+ (TSS 2.5+)¹⁸
- ✓ Dynamic Radar Cruise Control (DRCC)²⁶
- ✓ Star Safety System™
- ✓ Ten airbags²⁷
- ✓ Tire Pressure Monitor System (TPMS)²⁸ with direct pressure readout

Packages/Options

- ✓ Convenience Package includes:
 - Smart Key System²⁹
 - HomeLink®³⁰ universal transceiver
 - Auto-dimming rearview mirror
- ✓ Blind Spot Monitor (BSM)³² with Rear Cross-Traffic Alert (RCTA)³³



XSE

Adds to or replaces features offered on SE

Mechanical/Performance

- ✓ 2.5L 4-Cylinder with 206 hp
- ✓ Normal, ECO, and Sport drive modes
- ✓ Available All-Wheel Drive (AWD)
- ✓ 27 city/38 highway/31 combined EPA-est. mpg²

Exterior Features

- ✓ LED headlights with black accents, LED DRL with auto on/off feature
- ✓ LED taillights with black accents
- ✓ Gloss-black front grille with sport mesh insert
- ✓ 19-in. gloss-black wheels
- ✓ Dual exhaust with quad chrome tips
- ✓ Color-keyed heated power outside mirrors

Interior Features

- ✓ Dual zone automatic climate control
- ✓ Leather-trimmed seats
 - Heated front seats
 - Rear adjustable headrests
- ✓ 7-in. Multi-Information Display (MID)
- ✓ Smart Key System with Push Button Start
- ✓ Qi-compatible wireless charging³¹
- ✓ Patterned metal interior trim
- ✓ Ambient interior lighting

Audio Multimedia

- ✓ Audio Plus includes:
 - 9-in. touchscreen and six speakers
 - Android Auto™⁵ & Apple CarPlay™³ compatible
 - SiriusXM®¹⁴ with 3-month All Access trial subscription¹⁵
- ✓ Connected Services⁶ with Safety Connect™⁷

Safety Features

- ✓ Toyota Safety Sense 2.5+ (TSS 2.5+)¹⁸
- ✓ Full-Speed Range Dynamic Radar Cruise Control (DRCC)²⁰
- ✓ Star Safety System™
- ✓ Ten airbags²⁷
- ✓ Tire Pressure Monitor System (TPMS)²⁸ with direct pressure readout

Packages/Options

- ✓ Navigation Upgrade Package³⁴ includes:
 - Premium Audio, Dynamic Navigation³⁴ with 3-year trial³⁵
 - Nine JBL®¹⁷ speakers including subwoofer and amplifier
- ✓ Driver Assist Package includes:
 - 10-in. color Head-Up Display (HUD)
 - Bird's Eye View Camera³⁶
 - Intelligent Clearance Sonar (ICS)³⁷ with Rear Cross-Traffic Braking (RCTB)³⁸
 - Ventilated front seats
- ✓ Cold Weather Package includes:
 - Heated steering wheel
- ✓ Panoramic glass roof with front power tilt/slide moonroof
- ✓ Two-tone Midnight Black Metallic roof and rear spoiler¹

CAMRY MODELS



XSE V6

Adds to or replaces features offered on XSE

Mechanical/Performance

- ✓ 3.5L V6 with 301 hp
- ✓ 22 city/32 highway/26 combined EPA-est. mpg²

Exterior Features

- ✓ Panoramic glass roof with front power tilt/slide moonroof

Interior Features

- ✓ 10-in. color Head-Up Display (HUD)
- ✓ Dual sun visors with sliding extensions and illuminated vanity mirrors

Audio Multimedia

- ✓ Audio Plus with JBL^{®17} includes:
 - 9-in touchscreen and nine JBL^{®17} speakers including subwoofer and amplifier
 - Android Auto^{™5} & Apple CarPlay^{®3} compatible
 - SiriusXM^{®14} with 3-month All Access trial subscription¹⁵
- ✓ Connected Services⁶ with Safety Connect^{®7}

Safety Features

- ✓ Toyota Safety Sense 2.5+ (TSS 2.5+)¹⁸
- ✓ Full-Speed Range Dynamic Radar Cruise Control (DRCC)²⁰
- ✓ Star Safety System[™]
- ✓ Ten airbags²⁷
- ✓ Tire Pressure Monitor System (TPMS)²⁸ with direct pressure readout

Packages/Options

- ✓ Navigation Upgrade Package³⁴ includes:
 - Premium Audio, Dynamic Navigation³⁴ with 3-year trial³⁵
 - Nine JBL^{®17} speakers including subwoofer and amplifier
- ✓ Driver Assist Package includes:
 - Bird's Eye View Camera³⁶
 - Intelligent Clearance Sonar (ICS)³⁷ with Rear Cross-Traffic Braking (RCTB)³⁸
 - Ventilated front seats
- ✓ Cold Weather Package includes:
 - Heated steering wheel
- ✓ Two-tone Midnight Black Metallic roof and rear spoiler¹



TRD

Adds to or replaces features offered on SE

Mechanical/Performance

- ✓ 3.5L V6 with 301 hp
- ✓ Normal, ECO and Sport drive modes
- ✓ TRD track-tuned suspension
- ✓ 12.9-in. front disc brakes with red-painted calipers
- ✓ 22 city/31 highway/25 combined EPA-est. mpg²

Exterior Features

- ✓ Gloss-black front grille with sport mesh insert
- ✓ Black-painted heated power outside mirrors
- ✓ Black-painted window trim
- ✓ 19-in. x 8.5-in. TRD matte-black alloy wheels
- ✓ TRD gloss-black pedestal rear spoiler
- ✓ TRD gloss-black front splitter, side aero skirts and rear diffuser
- ✓ TRD cat-back dual exhaust with polished stainless steel tips
- ✓ Red TRD badge

Interior Features

- ✓ TRD instrumentation with red-illuminated accents
- ✓ Sport SofTex[®]-trimmed³⁹ front seats
 - Red seatbelts
 - TRD headrest logo
 - Fixed rear seat
- ✓ Leather-trimmed steering wheel with red stitching and paddle shifters
- ✓ Patterned metal interior trim
- ✓ Smart Key System²⁹ with Push Button Start
- ✓ Aluminum sport pedals

Audio Multimedia

- ✓ Audio includes:
 - 7-in. touchscreen and six speakers
 - Android Auto^{™5} & Apple CarPlay^{®3} compatible
 - SiriusXM^{®14} with 3-month All Access trial subscription¹⁵
- ✓ Connected Services⁶ with Safety Connect^{®7}

Safety Features

- ✓ Toyota Safety Sense 2.5+ (TSS 2.5+)¹⁸
- ✓ Full-Speed Range Dynamic Radar Cruise Control (DRCC)²⁰
- ✓ Star Safety System[™]
- ✓ Ten airbags²⁷
- ✓ Tire Pressure Monitor System (TPMS)²⁸ with direct pressure readout

Options

- ✓ TRD Premium Audio with nine JBL^{®17} speakers
- ✓ Two-tone Midnight Black Metallic roof¹
- ✓ All-season tires
- ✓ Summer tires

CAMRY HYBRID MODELS



LE Hybrid

Includes these key features

Mechanical/Performance

- ✓ Hybrid engine: 2.5L 4-Cylinder with 208 net hp
- ✓ Electronically controlled Continuously Variable Transmission (ECVT) with sequential shift mode
- ✓ Normal, ECO, EV⁴⁰ and Sport drive modes
- ✓ 51 city/53 highway/52 combined EPA-est. mpg²

Exterior Features

- ✓ Bi-LED combination headlights with auto on/off feature
- ✓ LED combination taillights with black accents
- ✓ Dark gray front grille
- ✓ 16-in. steel wheels
- ✓ Shark-fin antenna

Interior Features

- ✓ Dual zone automatic climate control
- ✓ Fabric-trimmed seats
 - 8-way power-adjustable driver's seat
 - 60/40 split fold-down rear seat
- ✓ 4.2-in. Multi-Information Display (MID)
- ✓ Smart Key System²⁹ with Push Button Start
- ✓ Linear dark interior trim
- ✓ Three USB ports²⁵

Audio Multimedia

- ✓ Audio includes:
 - 7-in. touchscreen and six speakers
 - Android Auto^{™5} & Apple CarPlay^{®3} compatible
 - SiriusXM^{®14} with 3-month All Access trial subscription¹⁵
- ✓ Connected Services⁶ with Safety Connect^{®7}

Safety Features

- ✓ Toyota Safety Sense 2.5+ (TSS 2.5+)¹⁸
- ✓ Full-Speed Range Dynamic Radar Cruise Control (DRCC)²⁰
- ✓ Star Safety System[™]
- ✓ Ten airbags²⁷
- ✓ Tire Pressure Monitor System (TPMS)²⁸ with direct pressure readout

Packages/Options

- ✓ Convenience Package includes:
 - HomeLink^{®30} universal transceiver
 - Auto-dimming rearview mirror
- ✓ Audio Upgrade Package includes:
 - Audio Plus with 9-in. touchscreen
 - Qi-compatible wireless charging³¹
- ✓ Cold Weather Package includes:
 - Heated front seats
 - Heated power outside mirrors
 - Heated steering wheel
- ✓ Blind Spot Monitor (BSM)³¹ with Rear Cross-Traffic Alert (RCTA)³³
- ✓ Power tilt/slide moonroof

CAMRY HYBRID MODELS



SE Hybrid

Adds to or replaces features offered on LE Hybrid

Mechanical/Performance

- ✓ Hybrid engine: 2.5L 4-Cylinder with 208 net hp
- ✓ Sport-tuned suspension
- ✓ 44 city/47 highway/46 combined EPA-est. mpg²

Exterior Features

- ✓ Bi-LED combination headlights with black accents and auto on/off feature
- ✓ Black front grille with sport mesh insert
- ✓ Color-keyed sport side rocker panels
- ✓ 18-in. black machined-finish alloy wheels
- ✓ Color-keyed rear spoiler
- ✓ Single exhaust with dual chrome tips

Interior Features

- ✓ Dual zone automatic climate control
- ✓ Sport SofTex[®]-trimmed³⁹ front seats
- ✓ Leather-trimmed tilt/telescopic steering wheel with paddle shifters

Audio Multimedia

- ✓ Audio includes:
 - 7-in. touchscreen and six speakers
 - Android Auto^{™5} & Apple CarPlay^{®3} compatible
 - SiriusXM^{®14} with 3-month All Access trial subscription¹⁵
- ✓ Connected Services⁶ with Safety Connect^{®7}

Safety Features

- ✓ Toyota Safety Sense 2.5+ (TSS 2.5+)¹⁸
- ✓ Full-Speed Range Dynamic Radar Cruise Control (DRCC)²⁰
- ✓ Star Safety System[™]
- ✓ Ten airbags²⁷
- ✓ Tire Pressure Monitor System (TPMS)²⁸ with direct pressure readout

Packages/Options

- ✓ Convenience Package includes:
 - HomeLink^{®30} universal transceiver
 - Auto-dimming rearview mirror
- ✓ Audio Upgrade Package includes:
 - Audio Plus with 9-in. touchscreen
 - Qi-compatible wireless charging³¹
- ✓ Cold Weather Package includes:
 - Heated front seats
 - Heated power outside mirrors
 - Heated steering wheel
- ✓ Blind Spot Monitor (BSM)³¹ with Rear Cross-Traffic Alert (RCTA)³³
- ✓ Power tilt/slide moonroof



XLE Hybrid

Adds to or replaces features offered on LE Hybrid

Mechanical/Performance

- ✓ Hybrid engine: 2.5L 4-Cylinder with 208 net hp
- ✓ 44 city/47 highway/46 combined EPA-est. mpg²

Exterior Features

- ✓ LED headlights and LED DRL with auto on/off feature
- ✓ LED taillights with black accents
- ✓ Dark gray front grille with chrome accents
- ✓ 18-in. dark gray machined-finish alloy wheels
- ✓ Color-keyed heated power outside mirrors

Interior Features

- ✓ Leather-trimmed seats
 - Heated front seats
 - Rear adjustable headrests
- ✓ Leather-trimmed tilt/telescopic steering wheel
- ✓ 7-in. Multi-Information Display (MID)
- ✓ Qi-compatible wireless charging³¹
- ✓ Wood inlay interior trim
- ✓ Ambient interior lighting

Audio Plus includes:

- ✓ 9-in. touchscreen and six speakers
 - Android Auto^{™5} & Apple CarPlay^{®3} compatible
 - SiriusXM^{®14} with 3-month All Access trial subscription¹⁵
- ✓ Connected Services⁶ with Safety Connect^{®7}

Safety Features

- ✓ Toyota Safety Sense 2.5+ (TSS 2.5+)¹⁸
- ✓ Full-Speed Range Dynamic Radar Cruise Control (DRCC)²⁰
- ✓ Star Safety System[™]
- ✓ Ten airbags²⁷
- ✓ Tire Pressure Monitor System (TPMS)²⁸ with direct pressure readout

Packages/Options

- ✓ Navigation Upgrade Package³⁴ includes:
 - Premium Audio, Dynamic Navigation³⁴ with 3-year trial³⁵
 - Nine JBL^{®17} speakers including subwoofer and amplifier
- ✓ Driver Assist Package includes:
 - 10-in. color Head-Up Display (HUD)
 - Bird's Eye View Camera³⁶
 - Intelligent Clearance Sonar (ICS)³⁷ with Rear Cross-Traffic Braking (RCTB)³⁸
 - Ventilated front seats
- ✓ Cold Weather Package includes:
 - Heated steering wheel
- ✓ Power tilt/slide moonroof



XSE Hybrid

Adds to or replaces features offered on SE Hybrid

Mechanical/Performance

- ✓ Hybrid engine: 2.5L 4-Cylinder with 208 net hp
- ✓ 44 city/47 highway/46 combined EPA-est. mpg²

Exterior Features

- ✓ LED headlights with black accents, LED DRL with auto on/off feature
- ✓ LED taillights with black accents
- ✓ Gloss-black front grille with sport mesh insert
- ✓ 19-in. gloss black wheels
- ✓ Color-keyed heated power outside mirrors

Interior Features

- ✓ Leather-trimmed seats
 - Heated front seats
 - Rear adjustable headrests
- ✓ 7-in. Multi-Information Display (MID)
- ✓ Qi-compatible wireless charging³¹
- ✓ Patterned metal interior trim
- ✓ Ambient interior lighting

Audio Multimedia

- ✓ Audio Plus includes:
 - 9-in. touchscreen and six speakers
 - Android Auto^{™5} & Apple CarPlay^{®3} compatible
 - SiriusXM^{®14} with 3-month All Access trial subscription¹⁵
- ✓ Connected Services⁶ with Safety Connect^{®7}

Safety Features

- ✓ Toyota Safety Sense 2.5+ (TSS 2.5+)¹⁸
- ✓ Full-Speed Range Dynamic Radar Cruise Control (DRCC)²⁰
- ✓ Star Safety System[™]
- ✓ Ten airbags²⁷
- ✓ Tire Pressure Monitor System (TPMS)²⁸ with direct pressure readout

Packages/Options

- ✓ Navigation Upgrade Package³⁴ includes:
 - Premium Audio, Dynamic Navigation³⁴ with 3-year trial³⁵
 - Nine JBL^{®17} speakers including subwoofer and amplifier
- ✓ Driver Assist Package includes:
 - 10-in. color Head-Up Display (HUD)
 - Bird's Eye View Camera³⁶
 - Intelligent Clearance Sonar (ICS)³⁷ with Rear Cross-Traffic Braking (RCTB)³⁸
 - Ventilated front seats
- ✓ Cold Weather Package includes:
 - Heated steering wheel
- ✓ Power tilt/slide moonroof
- ✓ Two-tone Midnight Black Metallic roof and rear spoiler¹

CAMRY COLORS & TRIMS



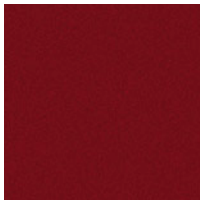
Midnight Black Metallic



Blueprint



Galactic Aqua Mica



Ruby Flare Pearl¹



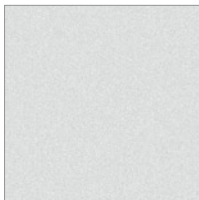
Supersonic Red¹



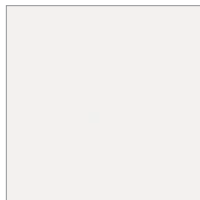
Predawn Gray Mica



Celestial Silver Metallic



Wind Chill Pearl¹



Super White

Available Midnight Black Metallic roof and rear spoiler¹



Supersonic Red, Celestial Silver Metallic,¹ Wind Chill Pearl¹

Available Midnight Black Metallic roof¹ for TRD models



Wind Chill Pearl,¹ Ice Edge

LE and LE Hybrid fabric shown in Ash

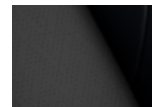


Black

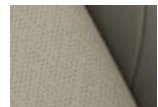


Macadamia

XLE, XLE V6 and XLE Hybrid leather trim shown in Ash



Black



Macadamia

SE, SE Nightshade Edition and SE Hybrid SofTex^{®39} trim shown in Black



Ash

XSE, XSE V6 and XSE Hybrid leather trim shown in Black



Ash



Cockpit Red

TRD SofTex^{®39} trim shown in Black



CAMRY WHEELS



LE Hybrid 16-in.
steel wheel



LE 17-in. alloy wheel



XLE, XLE V6 and XLE Hybrid 18-in.
dark gray machined-finish alloy wheel



SE and SE Hybrid 18-in. black
machined-finish alloy wheel



SE Nightshade Edition 18-in.
black-painted alloy wheel



XSE, XSE V6 and XSE Hybrid 19-in.
gloss-black alloy wheel



TRD 19-in. matte-black alloy wheel

CAMRY ACCESSORIES

This is a great way to add extra personality to your Camry. Not every accessory is available in your area, so for a complete list of accessories, go to toyota.com/camry/accessories.



All-weather floor liners⁴¹



Blackout emblem overlays



Cargo tray⁴²



Illuminated doorsills



Rear bumper appliqué



TRD 19-in. matte-black alloy wheels



TRD carpet floor mats⁴¹



TRD carpet trunk mat



TRD shift knob

WARRANTIES

Every Toyota Car, Truck and SUV is built to exceptional standards. And that's not idle boasting. We back it up with these Limited Warranty Coverages:

Basic: 36 months/36,000 miles (all components other than normal wear and maintenance items).

Hybrid-Related Component Coverage: Hybrid-related components, including the battery control module, hybrid control module and inverter with converter, are covered for 8 years/100,000 miles. Refer to applicable *Warranty and Maintenance Guide* for details.

Hybrid Battery: HV battery is covered for 10 years or 150,000 miles, whichever comes first. Warranty coverage is subject to terms and conditions. Refer to applicable *Warranty and Maintenance Guide* for details.

Powertrain: 60 months/60,000 miles (engine, transmission/transaxle, drive system, seatbelts and airbags).

Rust-Through: 60 months/unlimited miles (corrosion perforation of sheet metal).

Emissions: Coverages vary under Federal and California regulations. Refer to applicable *Warranty and Maintenance Guide* for details.

Accessories: For Genuine Toyota Accessories purchased at the time of the new vehicle purchase, the Toyota Accessory Warranty coverage is in effect for 36 months/36,000 miles from the vehicle's in-service date, which is the same coverage as the Toyota New Vehicle Limited Warranty.

For Genuine Toyota Accessories purchased after the new vehicle purchase the coverage is 12 months, regardless of mileage, from the date the accessory was installed on the vehicle, or the remainder of any applicable new vehicle warranty, whichever provides greater coverage.

You may be eligible for transportation assistance if it's necessary that your vehicle be kept overnight for repairs covered under warranty. Please see your authorized Toyota dealership for further details.

For complete details about Toyota's warranties, please visit www.toyota.com, refer to the applicable *Warranty and Maintenance Guide* or see your Toyota dealer.

CAMRY FEATURES⁴³

S = Standard O = Optional P = Available as part of a package

Exterior	SE Nightshade Edition									HYBRID			
	LE	XLE	XLE V6	SE	XSE	XSE V6	TRD	LE	SE	XLE	XSE		
LED headlights with fully integrated LED Daytime Running Lights (DRL) and auto on/off feature		S	S							S			
LED headlights with black accents, fully integrated LED DRL and auto on/off feature					S	S						S	
Bi-LED combination headlights with auto on/off feature	S							S					
Bi-LED combination headlights with black accents and auto on/off feature				S	S		S		S				
LED Daytime Running Lights (DRL) with on/off feature	S	S	S	S	S	S	S	S	S	S	S	S	
LED combination taillights with black accents	S			S	S			S	S				
LED taillights with black accents		S	S			S	S				S	S	
LED headlights with level control and auto on/off feature											O		
Dark gray front grille	S								S				
Black front grille with sport mesh insert				S	S					S			
Dark gray front grille with chrome accents		S	S								S		
Gloss-black front grille with sport mesh insert						S	S	S				S	
Color-keyed sport side rocker panels				S	S	S	S	S		S		S	
Two-tone Midnight Black Metallic roof and rear spoiler ¹						O	O	O				O	
Color-keyed power outside mirrors	S			S					S	S			
Black-painted power outside mirrors					S								
Color-keyed heated power outside mirrors with turn signal and blind spot warning indicators ³²	P	S	S	P		S	S		P	P	S	S	
Black painted heated power outside mirrors with turn signal and blind spot warning indicator ³²						P	P	P	S			P	
Black-painted window trim					S	P	P	S				P	
Black-painted outside door handles					S								
Black-painted outside door handles with touch sensor lock/unlock feature					P								
Color-keyed outside door handles	S			S									
Color-keyed outside door handles with touch-sensor lock/unlock feature	P	S	S	P		S	S	S	S	S	S	S	
Power tilt/slide moonroof	O			O					O	O	O	O	
Panoramic glass roof with front power tilt/slide moonroof		O	S			O	S						
19-in. x 8.5-in. TRD matte-black alloy wheels with P235/40R19 tires								S					
19-in. gloss-black wheels with P235/40R19 tires						S	S					S	
18-in. black-painted alloy wheels with P235/45R18 tires					S								
18-in. dark gray machined-finish alloy wheels with P235/45R18 tires		S	S								S		
18-in. black machined-finish alloy wheels with P235/45R18 tires				S						S			
17-in. alloy wheels with P215/55R17 tires	S												
16-in. steel wheels with P205/65R16 tires									S				
Matte-black center cap with red TRD logo								S					
Washer-linked intermittent windshield wipers	S	S	S	S	S	S	S	S	S	S	S	S	
High Solar Energy-Absorbing (HSEA) glass	S	S	S	S	S	S	S	S	S	S	S	S	
Acoustic noise-reducing front windshield	S	S	S	S	S	S	S	S	S	S	S	S	
Color-keyed rear spoiler				S		S	S			S		S	
Black-painted rear spoiler					S	P	P					P	
TRD gloss-black pedestal rear spoiler								S					
TRD gloss-black front splitter, side aero skirts, and rear diffuser with red pinstriping								S					
TRD cat-back dual exhaust with polished stainless steel tips								S					
Dual exhaust with quad chrome tips						S	S						
Dual exhaust with chrome finisher			S										
Single exhaust	S								S				
Single exhaust with chrome finisher		S									S		
Single exhaust with dual chrome tips				S	S					S		S	
In-glass AM/FM antenna	S	S	S	S	S	S	S	S	S	S	S	S	
Shark-fin antenna	S	S	S	S		S	S	S	S	S	S	S	
Black-painted shark-fin antenna					S								
Black SE grade badge					S								
Black rear "Toyota" emblem and "CAMRY" lettering					S				S				
Red TRD badge								S					
Black AWD badge					O								
Chrome AWD badge	O	O		O		O							

See numbered footnotes in Disclosures section.

CAMRY FEATURES⁴³

S = Standard O = Optional P = Available as part of a package

Interior	SE Nightshade Edition									HYBRID		
	LE	XLE	XLE V6	SE	SE Edition	XSE	XSE V6	TRD	LE	SE	XLE	XSE
Front air conditioning with air filter	S											
Single-zone automatic climate control with air filter				S	S			S				
Dual zone automatic climate control with air filter and rear-seat vents	P	S	S	P		S	S					
Dual zone automatic climate control with air filter, electric compressor and humidity sensor									S	S		
Dual zone automatic climate control with air filter, electric compressor, humidity sensor and rear-seat vents											S	S
Qi-compatible wireless smartphone charging ³¹	P	S	S	P		S	S		P	P	S	S
Integrated backup camera ⁴⁴ with projected path	S			S	S			S	S	S		
Integrated backup camera ⁴⁴ with dynamic gridlines	P	S	S	P		S	S		P	P	S	S
4.2-in. TFT Multi-Information Display (MID) with odometer, outside temperature, fuel economy and trip information, current/average fuel economy, distance to empty, average speed, trip distance with timer and warning messages	S											
4.2-in. TFT Multi-Information Display (MID) with odometer, outside temperature, fuel economy and trip information, current/average fuel economy, distance to empty, average speed, trip distance with timer, TPMS ²⁸ and warning messages				S	S							
4.2-in. TFT Multi-Information Display (MID) with TRD start-up animation, odometer, outside temperature, fuel economy and trip information, current/average fuel economy, distance to empty, average speed, trip distance with timer, TPMS ²⁸ and warning messages								S				
TRD instrumentation with red-illuminated accents								S				
4.2-in. TFT Multi-Information Display (MID) with odometer, outside temperature, fuel economy and trip information, current/average fuel economy, distance to empty, average speed, trip distance with timer, hybrid system information, energy monitor and warning messages									S			
4.2-in. TFT Multi-Information Display (MID) with odometer, outside temperature, fuel economy and trip information, current/average fuel economy, distance to empty, average speed, trip distance with timer, hybrid system information, energy monitor, TPMS ²⁸ and warning messages										S		
7-in. TFT Multi-Information Display (MID) with customizable settings, odometer, outside temperature, fuel economy and trip information, current/average fuel economy, distance to empty, average speed, trip distance with timer, TPMS ²⁸ scheduled maintenance and warning messages	O	S	S	O	O	S	S					
7-in. TFT Multi-Information Display (MID) with customizable settings, odometer, outside temperature, fuel economy and trip information, current/average fuel economy, distance to empty, average speed, trip distance with timer, TPMS ²⁸ scheduled maintenance, compass and warning messages		O	O			O	O					
7-in. TFT Multi-Information Display (MID) with customizable settings, odometer, outside temperature, fuel economy and trip information, current/average fuel economy, distance to empty, average speed, hybrid system information, energy monitor, TPMS ²⁸ scheduled maintenance and warning messages											S	S
7-in. TFT Multi-Information Display (MID) with customizable settings, odometer, outside temperature, fuel economy and trip information, current/average fuel economy, distance to empty, average speed, hybrid system information, energy monitor, TPMS ²⁸ scheduled maintenance, compass and warning messages											O	O
Fabric-trimmed front seats with passenger-side seatback pocket; 8-way power-adjustable driver's seat with power lumbar support; 6-way adjustable front passenger seat	S								S			
Sport SofTex®-trimmed ³⁹ front seats with fabric inserts, seatback pockets; 8-way power-adjustable driver's seat with power lumbar support; 6-way adjustable front passenger seat				S	S					S		
Sport SofTex®-trimmed ³⁹ front seats with red seatbelts, stitching and fabric inserts, red-stitched TRD headrest logo, seatback pockets; 8-way power-adjustable driver's seat with power lumbar support; 6-way adjustable front passenger seat								S				
Leather-trimmed front seats with seatback pockets; 8-way power-adjustable driver's seat with power lumbar support; 6-way power-adjustable front passenger seat		S	S			S	S				S	S
Multi-stage heated front seats	P	S	S	P		S	S		P	P	S	S
Multi-stage heated and ventilated front seats		P	P			P	P				P	P
Fixed rear seat								S				
Rear adjustable headrests		S	S			S	S				S	S

CAMRY FEATURES⁴³

S = Standard O = Optional P = Available as part of a package

Interior (continued)	SE Nightshade								HYBRID			
	LE	XLE	XLE V6	SE	Edition	XSE	XSE V6	TRD	LE	SE	XLE	XSE
60/40 split fold-down rear seat with center armrest with cup holders	S	S	S	S	S	S	S		S	S	S	S
Full-Speed Range Dynamic Radar Cruise Control (DRCC) ²⁰		S	S			S	S	S	S	S	S	S
Dynamic Radar Cruise Control (DRCC) ²⁶	S			S	S							
Tilt/telescopic 3-spoke steering wheel with audio, Multi-Information Display (MID) and Bluetooth ^{®45} hands-free phone, voice-command, Dynamic Radar Cruise Control (DRCC) ²⁶ conventional cruise control and Lane Departure Alert (LDA) ²¹ controls	S											
Tilt/telescopic 3-spoke steering wheel with audio, Multi-Information Display (MID) and Bluetooth ^{®45} hands-free phone, voice-command, Full-Speed Range Dynamic Radar Cruise Control (DRCC) ²⁰ conventional cruise control and Lane Departure Alert (LDA) ²¹ controls									S			
Leather-trimmed tilt/telescopic 3-spoke steering wheel with audio, Multi-Information Display (MID), Bluetooth ^{®45} hands-free phone, voice-command, Full-Speed Dynamic Radar Cruise Control (DRCC) ²⁰ conventional cruise control and Lane Departure Alert (LDA) ²¹ controls		S	S									S
Leather-trimmed tilt/telescopic 3-spoke steering wheel with paddle shifters, audio, Multi-Information Display (MID), Bluetooth ^{®45} hands-free phone, voice-command, Dynamic Radar Cruise Control (DRCC) ²⁶ conventional cruise control and Lane Departure Alert (LDA) ²¹ controls				S	S							
Leather-trimmed tilt/telescopic 3-spoke steering wheel with red stitching, paddle shifters, audio, Multi-Information Display (MID), Bluetooth ^{®45} hands-free phone, voice-command, Full-Speed Range Dynamic Radar Cruise Control (DRCC) ²⁰ conventional cruise control and Lane Departure Alert (LDA) ²¹ controls								S				
Leather-trimmed tilt/telescopic 3-spoke steering wheel with paddle shifters, audio, Multi-Information Display (MID), Bluetooth ^{®45} hands-free phone, voice-command, Full-Speed Range Dynamic Radar Cruise Control (DRCC) ²⁶ conventional cruise control and Lane Departure Alert (LDA) ²¹ controls						S	S			S		S
Heated steering wheel	P	P	P	P		P	P		P	P	P	P
3-mode switch (ECO, Normal, Sport)		S	S			S	S	S				
4-mode switch (EV, ⁴⁰ ECO, Normal, Sport)									S	S	S	S
10-in. color Head-Up Display (HUD) with customizable settings, speedometer, shift position, TSS 2.5+ ¹⁸ indicators, audio, phone, outside temperature and adjustable brightness			S				S					
10-in. color Head-Up Display (HUD) with customizable settings, speedometer, navigation, shift position, compass, TSS 2.5+ ¹⁸ indicators, audio, phone, outside temperature and adjustable brightness		P	P			P	P					
10-in. color Head-Up Display (HUD) with customizable settings, speedometer, navigation, shift position, compass, TSS 2.5+ ¹⁸ indicators, audio, phone, outside temperature, Hybrid System Indicator and adjustable brightness											P	P
Bird's Eye View Camera ³⁶ with Perimeter Scan, overhead 360-degree view in drive and reverse, and curb view		P	P			P	P				P	P
Soft-material upper door trim	S	S	S	S	S	S	S	S	S	S	S	S
Linear dark interior trim	S			S	S				S	S		
Wood inlay interior trim		S	S								S	
Patterned metal interior trim						S	S	S				S
Red-stitched instrument panel and shift boot								S				
Aluminum sport pedals								S				
Black leather shift knob with red stitching and debossed TRD logo								S				
Black floor mats ⁴¹ with red "CAMRY TRD" logo and red outline								S				
Interior silver door handles	S	S	S	S	S	S	S	S	S	S	S	S
Multi-function in-key remote keyless entry system with lock, two-stage unlock, panic, trunk-release functions and remote illuminated entry	S			S	S							
Smart Key System ²⁹ on front doors and trunk with Push Button Start, remote keyless entry system and remote illuminated entry	P	S	S	P	P	S	S	S	S	S	S	S
Power windows with 4-window auto up/down, jam protection and retained-power features	S	S	S	S	S	S	S	S	S	S	S	S
Rear window defogger with timer	S	S	S	S	S	S	S	S	S	S	S	S
Power door locks with shift-linked automatic locking feature with anti-lockout feature	S	S	S	S	S	S	S	S	S	S	S	S
Day/night rearview mirror	S			S	S			S	S	S		
Auto-dimming rearview mirror	P	S	S	P	P	S	S		P	P	S	S

See numbered footnotes in Disclosures section.

CAMRY FEATURES⁴³

S = Standard O = Optional P = Available as part of a package

Interior (continued)	SE Nightshade									HYBRID		
	LE	XLE	XLE V6	SE	Edition	XSE	XSE V6	TRD	LE	SE	XLE	XSE
Overhead console with maplights and sunglasses storage	S			S	S			S	S	S		
Overhead console with maplights, sunglasses storage and HomeLink ^{®30} universal transceiver	P	S		P	P	S			P	P	S	S
Overhead console with maplights and HomeLink ^{®30} universal transceiver	P	P	S	P		P	S		P	P	P	P
Covered center console, armrest and storage	S	S	S	S	S	S	S	S	S	S	S	S
LED-illuminated glove compartment	S	S	S	S	S	S	S	S	S	S	S	S
One 12V auxiliary power outlet ⁴⁶	S	S	S	S	S	S	S	S	S	S	S	S
One USB and media port ²⁵ (1.5A)	S	S	S	S	S	S	S	S	S	S	S	S
One USB-C charge port ²⁵	S	S	S	S	S	S	S	S	S	S	S	S
Dual sun visors with sliding extensions	S	S		S	S	S		S	S	S	S	S
Dual sun visors with sliding extensions and illuminated vanity mirrors	P	P	S	P		P	S		P	P	P	P
LED rear-seat reading lights	P	S	S	P		S	S		P	P	P	P
Ambient lighting		S	S			S	S				S	S
Two front cup holders; two front door and two rear bottle holders								S				
Two front and two rear cup holders; two front door and two rear bottle holders	S	S	S	S	S	S	S		S	S	S	S
Electric Parking Brake (EPB) ⁴⁷ with Brake Hold ⁴⁸ function	O	S	S	O	O	S	S	S	S	S	S	S

Audio Multimedia

Audio — includes 7-in. touchscreen, six speakers, Android Auto ^{™5} & Apple CarPlay ^{®3} & Amazon Alexa ¹⁶ compatible, USB media port, ²⁵ two USB charge ports, ²⁵ hands-free phone capability and music streaming ⁴⁵ via Bluetooth ^{®45} wireless technology, SiriusXM ^{®14} with 3-month All Access trial subscription, ¹⁵ Connected Services ⁶ — Safety Connect ^{®7} with 1-year trial, ⁴⁹ Wi-Fi Connect ¹¹ with up to 2 GB within 3-month trial. ⁵⁰ See toyota.com/connected-services for details.	S			S	S			S	S	S		
Audio Plus — includes 9.0-in touchscreen, six speakers, USB media port, ²⁵ two USB charge ports, ²⁵ hands-free phone capability and music streaming ⁴⁵ via Bluetooth ^{®45} wireless technology, Android Auto ^{™5} & Apple CarPlay ^{®3} & Amazon Alexa ¹⁶ compatible, SiriusXM ^{®14} with 3-month All Access trial subscription. ¹⁵ See toyota.com/audio-multimedia for details. Connected Services ⁶ — Safety Connect ^{®7} with 1-year trial, ⁴⁹ Service Connect ⁹ with 10-year trial, ⁵¹ Remote Connect ¹⁰ with 1-year trial, ⁵² Wi-Fi Connect ¹¹ with up to 2 GB within 3-month trial. ⁵⁰ See toyota.com/connected-services for details.	O	S		O		S			O	O	S	S
Audio Plus with JBL ^{®17} — includes 9.0-in touchscreen, nine JBL ^{®17} speakers including subwoofer and amplifier, USB media port, ²⁵ two USB charge ports, ²⁵ hands-free phone capability and music streaming ⁴⁵ via Bluetooth ^{®45} wireless technology, Android Auto ^{™5} & Apple CarPlay ^{®3} & Amazon Alexa ¹⁶ compatible, SiriusXM ^{®14} with 3-month All Access trial subscription. ¹⁵ See toyota.com/audio-multimedia for details. Connected Services ⁶ — Safety Connect ^{®7} with 1-year trial, ⁴⁹ Service Connect ⁹ with 10-year trial, ⁵¹ Remote Connect ¹⁰ with 1-year trial, ⁵² Wi-Fi Connect ¹¹ with up to 2 GB within 3-month trial. ⁵⁰ See toyota.com/connected-services for details.			S				S	O				
Premium Audio, Dynamic Navigation ³⁴ with 3-year trial ³⁵ — includes 9.0-in touchscreen, nine JBL ^{®17} speakers including subwoofer and amplifier, USB media port, ²⁵ two USB charge ports, ²⁵ hands-free phone capability and music streaming ⁴⁵ via Bluetooth ^{®45} wireless technology, Android Auto ^{™5} & Apple CarPlay ^{®3} & Amazon Alexa ¹⁶ compatible, SiriusXM ^{®14} with 3-month All Access trial subscription. ¹⁵ See toyota.com/audio-multimedia for details. Connected Services ⁶ — Safety Connect ^{®7} with 1-year trial, ⁴⁹ Service Connect ⁹ with 10-year trial, ⁵¹ Remote Connect ¹⁰ with 1-year trial, ⁵² Wi-Fi Connect ¹¹ with up to 2 GB within 3-month trial, ⁵⁰ Destination Assist ³² with 1-year trial. ⁵³ See toyota.com/connected-services for details.		O	O			O	O				O	O
Toyota+Alexa app	S	S	S	S	S	S	S	S	S	S	S	S

CAMRY FEATURES⁴³

S = Standard O = Optional P = Available as part of a package

Safety and Convenience

	LE	XLE	XLE V6	SE	SE Nightshade Edition	XSE	XSE V6	TRD	LE	SE	XLE	XSE
STAR SAFETY SYSTEM ™ Star Safety System™ — includes Enhanced Vehicle Stability Control (VSC) ⁵⁴ Traction Control (TRAC), 4-wheel Anti-Lock Brake System (ABS), Electronic Brake-force Distribution (EBD), Brake Assist (BA) ⁵⁵ and Smart Stop Technology® (SST) ⁵⁶	S	S	S	S	S	S	S	S	S	S	S	S
Ten airbags ²⁷ — includes driver and front passenger Advanced Airbag System, driver and front passenger seat-mounted side airbags, driver and front passenger knee airbags, rear seat-mounted side airbags, and front and rear side curtain airbags	S	S	S	S	S	S	S	S	S	S	S	S
Driver and front passenger Whiplash-Injury-Lessening (WIL) ⁵⁷ seats	S	S	S	S	S	S	S	S	S	S	S	S
3-point seatbelts for all seating positions; driver-side Emergency Locking Retractor (ELR) and Automatic/Emergency Locking Retractor (ALR/ELR) on all passenger seatbelts	S	S	S	S	S	S	S	S	S	S	S	S
LATCH (Lower Anchors and Tethers for Children) includes lower anchors on outboard rear seats	S	S	S	S	S	S	S	S	S	S	S	S
Child-protector rear door locks and power window lockout control	S	S	S	S	S	S	S	S	S	S	S	S
Energy-absorbing collapsible steering column	S	S	S	S	S	S	S	S	S	S	S	S
Front and rear energy-absorbing crumple zones	S	S	S	S	S	S	S	S	S	S	S	S
Side-impact door beams	S	S	S	S	S	S	S	S	S	S	S	S
Tire Pressure Monitor System (TPMS) ²⁸	S								S			
Tire Pressure Monitor System (TPMS) ²⁸ with direct pressure readout		S	S	S	S	S	S	S		S	S	S
Collision sensors: deactivate high-voltage battery									S	S	S	S
Toyota Safety Sense™ 2.5+ (TSS 2.5+) ¹⁸ — Pre-Collision System with Pedestrian Detection (PCS w/PD), ¹⁹ Lane Departure Alert with Steering Assist (LDA w/SA), ²¹ Automatic High Beams (AHB), ²² Road Sign Assist (RSA) ²⁴ and Dynamic Radar Cruise Control (DRCC) ²⁶	S			S	S							
Toyota Safety Sense™ 2.5+ (TSS 2.5+) ¹⁸ — Pre-Collision System with Pedestrian Detection (PCS w/PD), ¹⁹ Lane Departure Alert with Steering Assist (LDA w/SA), ²¹ Automatic High Beams (AHB), ²² Lane Tracing Assist (LTA), ²³ Road Sign Assist (RSA) ²⁴ and Full-Speed Range Dynamic Radar Cruise Control (DRCC) ²⁰		S	S			S	S	S	S	S	S	S
Blind Spot Monitor (BSM) ³² with Rear Cross-Traffic Alert (RCTA) ³³	P	S	S	P	P	S	S	S	P	P	S	S
Blind Spot Monitor (BSM) ³² with Rear Cross-Traffic Alert (RCTA) ³³ and Intelligent Clearance Sonar (ICS) ³⁷ with Rear Cross-Traffic Braking (RCTB) ⁵²		P	P			P	P				P	P
Automatic engine shut off	S	S	S	S	S	S	S	S	S	S	S	S
Hill Start Assist Control (HAC) ⁵⁸	S	S	S	S	S	S	S	S	S	S	S	S
Anti-theft system with alarm	S	S	S	S	S	S	S	S	S	S	S	S
ToyotaCare featuring a no cost maintenance plan with Roadside Assistance ⁵⁹	S	S	S	S	S	S	S	S	S	S	S	S

CAMRY FEATURES⁴³

S = Standard O = Optional P = Available as part of a package

Packages and Options	LE	XLE	XLE V6	SE	SE Nightshade Edition	XSE	XSE V6	TRD	LE	SE	XLE	XSE
Convenience Package — includes Smart Key System, ²⁹ HomeLink ^{®30} universal transceiver, auto-dimming rearview mirror	P			P	P							
Convenience Package (Hybrid) — includes HomeLink ^{®30} universal transceiver, auto-dimming rearview mirror									P	P		
Audio Upgrade Package — includes Audio Plus with 9-in. touchscreen, Qi-compatible wireless smartphone charging, ³¹ dual-zone automatic climate control	O			O								
Audio Upgrade Package (Hybrid) — includes Audio Plus with 9-in. touchscreen, Qi-compatible wireless smartphone charging ³¹									O	O		
Navigation Upgrade Package³⁴ — includes Premium Audio with 9-in. touchscreen, Dynamic Navigation ³⁴ and nine JBL ^{®17} speakers		O	O			O	O				O	O
TRD Premium Audio with nine JBL ^{®17} speakers								O				
Driver Assist Package												
10-in. color Head-Up Display (HUD)		P	S			P	S				P	P
Bird's Eye View Camera ³⁶ with Perimeter Scan		P	P			P	P				P	P
Intelligent Clearance Sonar (ICS) ³⁷ with Rear Cross-Traffic Braking (RCTB) ³⁸		P	P			P	P				P	P
Multi-stage ventilated front seats		P	P			P	P				P	P
Cold Weather Package												
Heated steering wheel	P	P	P	P		P	P		P	P	P	P
Heated front seats	P	S	S	P		S	S		P	P	S	S
Heated power outside mirrors	P	S	S	P		S	S		P	P	S	S
Power tilt/slide moonroof	O			O					O	O	O	O
Panoramic glass roof with front power tilt/slide moonroof		O	S			O	S					
Blind Spot Monitor (BSM) ³² with Rear Cross-Traffic Alert (RCTA) ³³	O			O	O				O	O		
Two-tone Midnight Black Metallic roof and rear spoiler ¹ (includes black window trim and sideview mirror caps)						O	O	O				O
Adaptive Headlights — LED headlights with level control and auto on/off feature											O	
All-season tires								O				
Summer tires								O				

CAMRY SPECIFICATIONS

S = Standard O = Optional

LE XLE XLE V6 SE SE Nightshade Edition XSE XSE V6 TRD LE SE HYBRID XLE XSE

Mechanical/Performance

ENGINE

2.5-Liter Dynamic Force 4-Cylinder DOHC 16-Valve D-4S Dual Injection with Dual VVT-i; 203 hp @ 6600 rpm; 184 lb.-ft. @ 5000 rpm

S S S

2.5-Liter Dynamic Force 4-Cylinder DOHC 16-Valve D-4S Dual Injection with Dual VVT-i and ECO, Normal and Sport drive modes; 203 hp @ 6800 rpm; 184 lb.-ft. @ 5000 rpm

S

2.5-Liter Dynamic Force 4-Cylinder DOHC 16-Valve D-4S Dual Injection with Dual VVT-i and ECO, Normal and Sport drive modes; 206 hp @ 6800 rpm; 186 lb.-ft. @ 5000 rpm

S

3.5-Liter V6 DOHC 24-Valve D-4S Dual Injection with Dual VVT-i; 301 hp @ 6600 rpm; 267 lb.-ft. @ 4700 rpm

S S S

208 net system hp

S S S S

Hybrid engine: 2.5-Liter Dynamic Force 4-Cylinder DOHC 16-Valve D-4S Dual Injection with Dual VVT-i with ECO, Normal, Sport and EV⁴⁰ drive modes; 176 hp @ 5700 rpm; 163 lb.-ft. @ 5200 rpm

S S S S

2.5-Liter Dynamic Force 4-Cylinder DOHC 16-Valve D-4S Dual Injection with Dual VVT-i; 202 hp @ 6600 rpm; 182 lb.-ft. @ 4400 rpm

O O O

2.5-Liter Dynamic Force 4-Cylinder DOHC 16-Valve D-4S Dual Injection with Dual VVT-i and ECO, Normal and Sport drive modes; 202 hp @ 6600 rpm; 182 lb.-ft. @ 4400 rpm

O

2.5-Liter Dynamic Force 4-Cylinder DOHC 16-Valve D-4S Dual Injection with Dual VVT-i and ECO, Normal and Sport drive modes; 205 hp @ 6600 rpm; 185 lb.-ft. @ 4600 rpm

O

COMPRESSION RATIO

13.0 : 1 13.0 : 1 11.8 : 1 13.0 : 1 13.0 : 1 13.0 : 1 11.8 : 1 11.8 : 1 14.0 : 1 14.0 : 1 14.0 : 1 14.0 : 1

EMISSION RATING

Super Ultra Low Emission Vehicle (SULEV) S S S S S S S S S S

Ultra Low Emission Vehicle (ULEV) S (AWD) S (AWD) S S (AWD) S (AWD) S (AWD) S S S

ELECTRIC MOTOR

Power output 118 HP (88 kW) 118 HP (88 kW) 118 HP (88 kW) 118 HP (88 kW)

Torque 149 lb.-ft. (202 N·m) 149 lb.-ft. (202 N·m) 149 lb.-ft. (202 N·m) 149 lb.-ft. (202 N·m)

Voltage 650V (max sys.) 650V (max sys.) 650V (max sys.) 650V (max sys.)

Hybrid system net power 208 HP 208 HP 208 HP 208 HP

TRACTION BATTERY

Sealed Lithium-ion (LI) S S S S

VOLTAGE

Voltage 259.0V 259.0V 259.0V 259.0V

TRANSMISSION

Direct Shift-8AT 8-speed Electronically Controlled automatic Transmission with intelligence (ECT-i) with sequential shift mode S S S S S S S S

Electronically controlled Continuously Variable Transmission (ECVT) with sequential shift mode S S S S

CAMRY SPECIFICATIONS

S = Standard O = Optional

	LE	XLE	XLE V6	SE	SE Nightshade Edition	XSE	XSE V6	TRD	LE	SE	HYBRID XLE	XSE
DRIVETRAIN												
Front-Wheel Drive (FWD)	S	S	S	S	S	S	S	S	S	S	S	S
All-Wheel Drive (AWD)	O	O		O	O	O						
BODY CONSTRUCTION												
Unitized body with front and rear anti-vibration sub-frames	S	S	S	S	S	S	S		S	S	S	S
Increased-thickness underbody braces and added rear-seat V-bracing								S				
SUSPENSION												
Independent MacPherson strut front suspension with gas-filled shock absorbers and stabilizer bar; multi-link rear suspension with gas-filled shock absorbers and stabilizer bar, and front strut tower bracing	S	S	S						S		S	
Independent MacPherson strut front suspension with gas-filled shock absorbers and stabilizer bar; multi-link rear suspension with gas-filled shock absorbers and stabilizer bar, sport-tuned shock absorbers and springs, and front strut tower bracing				S	S	S	S			S		S
Independent MacPherson strut front suspension; multi-link rear suspension; front strut tower bracing; TRD track-tuned front and rear coil springs, shock absorbers and stabilizer bars								S				
STEERING												
Electric Power Steering (EPS); power-assisted rack-and-pinion	S	S	S	S	S	S	S	S	S	S	S	S
Turning circle diameter, curb to curb (ft.)	37.4	38.0	38.0	38.0	38.0	38.0	38.0	38.0	37.4	38.0	38.0	38.0
Turning circle diameter, curb to curb (ft.) (AWD-equipped)	38.7	39.3		39.3	39.3	39.3						
BRAKES												
Power-assisted ventilated 12-in. front disc brakes; solid 11.06-in. rear disc brakes with hydraulic brake booster, Electronically Controlled Braking (ECB) system and Star Safety System™	S	S	S	S	S	S	S					
Power-assisted ventilated 12-in. front disc brakes; solid 11.06-in. rear disc brakes with hydraulic brake booster, Electronically Controlled Braking (ECB) system, integrated regenerative braking and Star Safety System™									S	S	S	S
Power-assisted ventilated 12.9-in. front disc brakes with dual-piston calipers; solid 11.06-in. rear disc brakes with hydraulic brake booster; Red-painted front and rear calipers; Unique brake booster and pedal stiffness tuning; Electronically Controlled Braking (ECB) system and Star Safety System™								S				
Active Cornering Assist (ACA)								S				

Dimensions

EXTERIOR DIMENSIONS (in.)

Overall height, unloaded (AWD-equipped)	56.9/57.1	56.9/57.1	56.9	56.9/57.1	56.9/57.1	56.9/57.1	56.9	56.3	56.9	56.9	56.9	56.9
Overall width	72.4	72.4	72.4	72.4	72.4	72.4	72.4	73.1	72.4	72.4	72.4	72.4
Overall length	192.1	192.1	192.1	192.7	192.7	192.7	192.7	194.6	192.1	192.7	192.1	192.7
Wheelbase	111.2	111.2	111.2	111.2	111.2	111.2	111.2	111.2	111.2	111.2	111.2	111.2
Ground clearance	5.7	5.7	5.7	5.7	5.7	5.7	5.7	5.7	5.7	5.7	5.7	5.7
Track (front/rear)	62.6/62.8	62.2/62.6	62.2/62.6	62.2/62.6	62.2/62.6	62.2/62.6	62.6/62.6	62.2/63.0	63.0/63.2	62.2/62.6	62.2/62.6	62.2/62.6
Track (front/rear) (AWD-equipped)	62.6/63.0	62.2/62.8		62.2/63.2	62.2/63.2	62.2/62.8						

See numbered footnotes in Disclosures section.

CAMRY SPECIFICATIONS

S = Standard O = Optional

	LE	XLE	XLE V6	SE	SE Nightshade Edition	XSE	XSE V6	TRD	LE	SE	XLE	XSE
INTERIOR DIMENSIONS (in.)												
Head room front/rear without moonroof (with moonroof)	38.3/38.0 (37.5/38.0)	38.3/38.0 (37.5/38.0)	(37.5/38.0)	38.3/38.0 (37.5/38.0)	38.3/38.0 (37.5/38.0)	38.3/38.0 (37.5/38.0)	(37.5/38.0)	38.3/38.0	38.3/37.6 (37.5/37.6)	38.3/37.6 (37.5/37.6)	38.3/37.6 (37.5/37.6)	38.3/37.6 (37.5/37.6)
Head room front/rear without moonroof (with moonroof) (AWD-equipped)	38.3/37.6 (37.5/37.6)	38.3/37.6 (37.5/37.6)		38.3/37.6 (37.5/37.6)	38.3/37.6 (37.5/37.6)	38.3/37.6 (37.5/37.6)						
Shoulder room	57.7/55.7	57.7/55.7	57.7/55.7	57.7/55.7	57.7/55.7	57.7/55.7	57.7/55.7	57.7/55.7	57.7/55.7	57.7/55.7	57.7/55.7	57.7/55.7
Hip room	55.4/54.7	55.4/54.7	55.4/54.7	55.4/54.7	55.4/54.7	55.4/54.7	55.4/54.7	55.4/54.7	55.4/54.6	55.4/54.6	55.4/54.6	55.4/54.6
Leg room	42.1/38.0	42.1/38.0	42.1/38.0	42.1/38.0	42.1/38.0	42.1/38.0	42.1/38.0	42.1/38.0	42.1/38.0	42.1/38.0	42.1/38.0	42.1/38.0

Weights and Capacities

Curb weight (lb.)/AWD-equipped	3310/3475	3380/3540	3595	3340/3530	3350/3530	3425/3580	3585	3575	3480	3535	3565	3580
EPA passenger volume (cu. ft.) without moonroof/AWD-equipped	100.4/99.9	100.4/99.9		100.4/99.9	100.4/99.9	100.4/99.9		100.4	99.9	99.9	99.9	99.9
EPA passenger volume (cu. ft.) with moonroof/AWD-equipped	99.3/98.8	99.3/98.8	99.3	99.3/98.8	99.3/98.8	99.3/98.8	99.3		98.8	98.8	98.8	98.8
Cargo volume, ⁴² rear seatbacks up (cu. ft.)	15.1	15.1	15.1	15.1	15.1	15.1	15.1	15.1	15.1	15.1	15.1	15.1
Fuel tank (gal.)/AWD-equipped	15.8/14.4	15.8/14.4	15.8	15.8/14.4	15.8/14.4	15.8/14.4	15.8	15.8	13.2	13.2	13.2	13.2
Seating capacity	5	5	5	5	5	5	5	5	5	5	5	5

TIRES

All-season	S	S	S	S	S	S	S	S	S	S	S	S
Summer								O				
Spare: Temporary	S	S	S	S	S	S	S	S	S	S	S	S

Mileage Estimates (mpg city/highway/combined)²

Front-Wheel Drive (FWD)	28/39/32	27/38/31	22/33/26	28/39/32	28/39/32	27/38/31	22/32/26	22/31/25	51/53/52	44/47/46	44/47/46	44/47/46
All-Wheel Drive (AWD)	25/34/29	25/34/28		25/34/29	25/34/29	25/34/28						

DISCLOSURES

1. Extra-cost color. 2. EPA-estimated 28 city/39 hwy/32 combined mpg for 2021 Camry LE, SE and SE Nightshade Edition; 27 city/38 hwy/31 combined mpg for 2021 Camry XLE 4-Cylinder and XSE 4-Cylinder; 22 city/33 hwy/26 combined mpg for 2021 Camry XLE V6; 22 city/32 hwy/26 combined mpg for 2021 Camry XSE V6; 21 city/31 hwy/25 combined mpg for 2021 Camry TRD; 51 city/53 hwy/52 combined mpg for 2021 Camry LE Hybrid; and 44 city/47 hwy/46 combined mpg for 2021 Camry SE Hybrid, XLE Hybrid and XSE Hybrid. Use for comparison purposes only. Your mileage will vary for many reasons, including your vehicle's condition and how/where you drive. See www.fueleconomy.gov. 3. Apps and services are subject to change at any time without notice. Data charges may apply. Apple CarPlay® functionality requires a compatible iPhone® connected with an approved data cable into the USB media port. Apple CarPlay® is a registered trademark of Apple Inc. 4. iPhone® is a registered trademark of Apple Inc. All rights reserved. 5. Vehicle user interface is a product of Google and its terms and privacy statement apply. To use Android Auto on your audio display, you'll need an Android Auto compatible vehicle and Android phone. For phone compatibility visit: <https://www.android.com/auto/>. Requires compatible smartphone connected with an approved data cable into the USB media port, and data plan rates apply. Apps and services vary by phone carrier and are subject to change at any time without notice. Android, Android Auto and Waze are trademarks of Google. 6. Connected Services depends on an operative telematics device, a cellular connection, navigation map data, GPS signal strength and other factors outside of Toyota's control, all of which can limit system functionality or availability, including access to response center and emergency support. Service may vary by vehicle and region. Terms of Use apply. Data charges may apply. Apps and services subject to change at any time without notice. See toyota.com/connected-services for details. To learn about Toyota's data collection, use, sharing and retention practices, please visit <https://www.toyota.com/privacyvts/>. Stolen vehicle police report required to use Stolen Vehicle Locator. 7. Toyota Safety Connect® depends on an operative telematics device, a cellular connection, navigation map data and GPS signal strength and other factors outside of Toyota's control, all of which can limit system functionality or availability, including access to response center and emergency support. Stolen vehicle police report required to use Stolen Vehicle Locator. Registration required. Service subject to change at any time without notice. Terms of Use apply. Service may vary by vehicle and region. See usage precautions and service limitations in *Owner's Manual* and at toyota.com/connected-services for additional details. To learn about Toyota's data collection, use, sharing and retention practices, please visit <https://www.toyota.com/privacyvts/>. 8. Requires adequate cellular coverage and GPS signal strength. May not work in all areas. Service may vary by vehicle and region. See Toyota Dealer for details and exclusions. 9. Information provided is based on the last time data was collected from the vehicle and may not be up to date. Service Connect depends on an operative telematics device, a cellular connection, navigation map data, GPS signal strength and other factors outside of Toyota's control, which can limit functionality or availability. Service may vary by vehicle and region. Registration required. Service subject to change at any time without notice. Terms and conditions of subscription service agreement apply. See usage precautions and service limitations in *Owner's Manual* and at toyota.com/connected-services for additional details. To learn about Toyota's data collection, use, sharing and retention, please visit <https://www.toyota.com/privacyvts/>. 10. Use only if aware of circumstances surrounding vehicle and it is legal and safe to do so (e.g., do not remotely start engine if vehicle is in an enclosed space or vehicle is occupied by a child). Remote Connect depends on an operative telematics device, a cellular connection, GPS signal strength and other factors outside of Toyota's control, which can limit system functionality and availability. Service may vary by vehicle and region. Registration and app download required. Terms of Use apply. Data charges may apply. Remote start/stop not available on manual-transmission-equipped vehicles. Services subject to change at any time without notice. See usage precautions and service limitations in *Owner's Manual* and at <https://www.toyota.com/connected-services> for additional details. To learn about Toyota's data collection, use, sharing and retention practices, please visit <https://www.toyota.com/privacyvts/>. 11. Eligible vehicle and wireless service required. Coverage and service not available everywhere. Valid in the contiguous U.S. and Alaska. Do not drive distracted. Go to att.com/toyota for terms and conditions. Data usage and charges apply. Up to 5 devices can be supported using in-vehicle connectivity. Apps and services subject to change at any time without notice. 12. Destination Assist depends on an operative telematics device, a cellular connection, navigation map data and GPS signal strength and other factors outside of Toyota's control, which can limit system ability functionality or availability. Use common sense when relying on this information. Service may vary by vehicle and region. Registration required. Services subject to change at any time without notice. Terms of Use apply. See *Owner's Manual* and toyota.com/connected-services for additional limitations and details. To learn about Toyota's data collection, use, sharing and retention practices, please visit <https://www.toyota.com/privacyvts/>. 13. Android is a trademark of Google LLC. 14. SiriusXM® audio services require a subscription sold separately by Sirius XM Radio Inc. If you decide to continue service after your trial, the subscription plan you choose will automatically renew thereafter and you will be charged according to your chosen payment method at then-current rates. Fees and taxes apply. To cancel, you must call SiriusXM at 1-866-635-2349. See SiriusXM Customer Agreement for complete terms at www.siriusxm.com. All fees and programming subject to change. Not all vehicles or devices are capable of receiving all services offered by SiriusXM. Current information and features may not be available in all locations, or on all receivers. ©2020 Sirius XM Radio Inc. SiriusXM and all related marks and logos are trademarks of Sirius XM Radio Inc. 15. SiriusXM All Access trial length and service availability may vary by model, model year or trim. 16. Amazon, Alexa and all related logos are trademarks of Amazon.com, Inc. or its affiliates. Certain functions require adequate signal strength and smartphone technology/connectivity. Not all Amazon Alexa functionality is available for in-vehicle use. See applicable app for details. Download of the Toyota+Alexa app is required to begin in-vehicle use of Alexa. Data charges may apply for certain functions. Apps, prices and services subject to change at any time without notice. To learn more, go to <https://www.toyota.com/audio-multimedia>. To learn more about Toyota's data collection, use, sharing and retention practices, please visit <https://www.toyota.com/privacyvts/>. 17. JBL® is a registered trademark of Harman International Industries, Inc. 18. Toyota Safety Sense™ effectiveness is dependent on many factors including road, weather and vehicle conditions. Drivers are responsible for their own safe driving. Always pay attention to your surroundings and drive safely. See *Owner's Manual* for additional limitations and details. 19. The Pre-Collision System (PCS) with Pedestrian Detection (PD) is designed to determine if impact is imminent and help reduce impact speed and damage in certain frontal collisions involving a vehicle, pedestrian or a bicyclist. PCS w/PD is not a substitute for safe and attentive driving. System effectiveness depends on many factors, such as speed, size and position of pedestrian or bicyclist and weather, light and road conditions. See *Owner's Manual* for additional limitations and details. 20. Full-Speed Range Dynamic Radar Cruise Control (DRCC) is designed to assist the driver and is not a substitute for safe and attentive driving practices. System effectiveness is dependent on many factors including road, weather and traffic conditions. Vehicles with manual transmission have regular DRCC. See *Owner's Manual* for additional limitations and details. 21. Lane Departure Alert with Steering Assist is designed to read visible lane markers under certain conditions. It provides a visual and audible alert and slight steering force when lane departure is detected. It is not a collision-avoidance system or a substitute for safe and attentive driving. Effectiveness is dependent on many factors including road, weather and vehicle conditions. See *Owner's Manual* for additional limitations and details. 22. Automatic High Beams operate at speeds above 25 mph. Factors such as a dirty windshield, weather, lighting and terrain limit effectiveness, requiring the driver to manually operate the high beams. See *Owner's Manual* for additional limitations and details. 23. Lane Tracing Assist (LTA) is designed to read visible lane markers and detect other vehicles under certain conditions. It is only operational when DRCC is engaged. See *Owner's Manual* for additional limitations and details. 24. Do not rely exclusively on Road Sign Assist (RSA). RSA is a driver support system that utilizes the vehicle's forward-facing camera and navigation system (when data is available) to recognize certain road signs and provide information to the driver via the multi-information display and/or Head-Up Display. Effectiveness is dependent on road, weather, vehicle and sign conditions. Use common sense when using RSA and do not drive distracted. See *Owner's Manual* for additional limitations and details. 25. May not be compatible with all mobile phones, MP3/WMA players and like models. 26. Dynamic Radar Cruise Control (DRCC) is designed to assist the driver and is not a substitute for safe and attentive driving practices. System effectiveness is dependent on many factors including road, weather and traffic conditions. See *Owner's Manual* for additional limitations and details. 27. Airbag systems are Supplemental Restraint Systems and are designed to inflate only under certain conditions and in certain types of severe collisions. To decrease the risk of injury from an inflating airbag, always wear seatbelts and sit upright in the middle of the seat as far back as possible. Do not put objects in front of an airbag or around the seatback. Do not use a rearward-facing child seat in any front passenger seat. See *Owner's Manual* for additional limitations and details. 28. The Tire Pressure Monitor System alerts the driver when tire pressure is critically low. For optimal tire wear and performance, tire pressure should be checked regularly with a gauge; do not rely solely on the monitor system. See *Owner's Manual* for additional limitations and details. 29. The Smart Key System may interfere with some pacemakers or cardiac defibrillators. If you have one of these medical devices, please talk to your doctor to see if you should deactivate this system. 30. HomeLink® and the HomeLink® house icon are registered trademarks of Gentex Corporation. 31. Qi wireless charging may not be compatible with all mobile phones, MP3/WMA players and like models. When using the wireless charging system, avoid placing metal objects between the wireless charger and the mobile device when charging is active. Doing so may cause metal objects to become hot and could cause burns. 32. Do not rely exclusively on the Blind Spot Monitor. Always look over your shoulder and use your turn signal. There are limitations to the function, detection and range of the monitor. See *Owner's Manual* for additional limitations and details. 33. Do not rely exclusively on the Rear Cross-Traffic Alert system. Always look over your shoulder and use your mirrors to confirm rear clearance. There are limitations to the function, detection and range of the system. See *Owner's Manual* for additional limitations and details. 34. Dynamic Navigation depends on an operative telematics device, a cellular connection, navigation map data and GPS signal strength, and other factors outside of Toyota's control, which can limit system functionality or availability. Services not available in every city or roadway. Use common sense when relying on information provided. Service may vary by vehicle and region. Registration is required. Terms of Use apply. See *Owner's Manual* and <https://toyota.com/connected-services> for additional limitations and details. To learn about Toyota's data collection, use, sharing and retention practices, please visit <https://www.toyota.com/privacyvts/>. 35. The Dynamic Navigation three year trial period begins on the original date of purchase or lease of a new vehicle. After the trial period expires, enrollment in paid subscription is required to access the service. 36. The Bird's Eye View Camera does not provide a comprehensive view of the area surrounding the vehicle and you should also look around the vehicle, using mirrors to confirm surrounding clearance. Environmental conditions may limit effectiveness and view may become obscured. See *Owner's Manual* for additional limitations and details. 37. Intelligent Clearance Sonar (ICS) is designed to assist drivers in avoiding potential forward and rearward collisions at speeds of 9 mph or less. Certain vehicle and environmental factors, including an object's shape, size and composition, may affect the system's effectiveness. Always look around outside the vehicle and use mirrors to confirm clearance. See *Owner's Manual* for additional limitations and details. 38. Do not rely exclusively on the Rear Cross-Traffic Braking system. Always look over your shoulder and use your mirrors to confirm rear clearance. The system cannot prevent all collisions, and performance is dependent on road, weather and vehicle conditions. See *Owner's Manual* for additional limitations and details. 39. Softex® is a registered trademark of Toyota Motor Sales, U.S.A., Inc. 40. EV Mode lets you operate solely on battery power at low speeds for short distances and in limited circumstances, such as in a parking garage. Different conditions may prevent or limit usage. See your *Owner's Manual* for limitations and details. 41. This floor mat/floor liner was designed specifically for use in your model and model year vehicle and SHOULD NOT be used in any other vehicle. To avoid potential interference with pedal operation, each mat/liner must be secured with its fasteners. Do not install a floor mat/floor liner on top of an existing floor mat/floor liner. 42. Cargo and load capacity limited by weight and distribution. Always properly secure cargo and cargo area. 43. Toyota strives to build vehicles to match customer interest and thus they typically are built with popular options and option packages. Not all options/packages are available separately and some may not be available in all regions of the country. See toyota.com for information about options/packages commonly available in your area. If you would prefer a vehicle without any or with different options, contact your dealer to check for current availability or the possibility of placing a special order. Color(s) depicted may vary based on multiple factors, including ambient lighting and the format in which it is being viewed (e.g., computer, mobile device or print). 44. The backup camera does not provide a comprehensive view

DISCLOSURES

of the rear area of the vehicle and you should also look around the vehicle, using mirrors to confirm rearward clearance. Environmental conditions may limit effectiveness and view may become obscured. See *Owner's Manual* for additional limitations and details. **45.** The *Bluetooth*[®] word mark and logos are registered trademarks owned by Bluetooth SIG, Inc., and any use of such marks by Toyota is under license. A compatible *Bluetooth*[®]-enabled phone must first be paired. Phone performance depends on software, coverage and carrier. **46.** Rated for 12 volts. See *Owner's Manual* for additional limitations and details. **47.** When the system is on, Automatic Electric Parking Brake is designed to automatically engage the Electric Parking Brake under limited conditions. It may not hold the vehicle under all conditions and does not function when the vehicle is in Reverse. Automatic Electric Parking Brake is not a substitute for manual use of the Electric Parking Brake. See *Owner's Manual* for additional limitations and details. **48.** When the system is on, Brake Hold is designed to keep the brakes engaged after the driver brings the vehicle to a complete stop. It may not hold the vehicle under certain conditions and does not function when the vehicle is in Reverse. Brake Hold is not a substitute for safe and attentive driving. See *Owner's Manual* for additional limitations and details. **49.** The Safety Connect[®] trial period is at no extra cost and begins on the original date of purchase or lease of a new vehicle. After the trial period expires, enrollment in paid subscription is required to access the service. **50.** The Wi-Fi Connect trial begins at the time of activation and expires when 2GB of data is used or when the 3-month period ends. After the trial period expires, enrollment in a paid subscription is required to access the service. Terms and conditions apply. **51.** The Service Connect trial period is at no extra cost and begins on the original date of purchase or lease of a new vehicle. After the respective trial period expires, enrollment in paid subscription is required to access the service. **52.** The Remote Connect trial period is at no extra cost and begins on the original date of purchase or lease of a new vehicle. After the trial period expires, enrollment in a paid subscription is required to access the service. Terms and conditions apply. **53.** The Destination Assist trial period is at no extra cost and begins on the original date of purchase or lease of a new vehicle. After the trial period expires, enrollment in a paid subscription is required to access the service. **54.** Vehicle Stability Control is an electronic system designed to help the driver maintain vehicle control under adverse conditions. It is not a substitute for safe and attentive driving practices. Factors including speed, road conditions, weather and driver steering input can all affect whether VSC will be effective in preventing a loss of control. See *Owner's Manual* for additional limitations and details. **55.** Brake Assist is designed to help the driver take advantage of ABS and is not a substitute for safe driving practices. Braking effectiveness also depends on proper vehicle maintenance, tire and road conditions. See *Owner's Manual* for additional limitations and details. **56.** Smart Stop Technology[®] operates only in the event of certain contemporaneous brake and accelerator pedal applications. When engaged, the system will reduce power to help the brakes bring the vehicle to a stop. Factors including speed, road conditions and driver input can all impact stopping distance. Smart Stop Technology[®] is not a substitute for safe and attentive driving and does not guarantee instant stopping. See *Owner's Manual* for additional limitations and details. **57.** Whiplash-Injury-Lessening front seats can help reduce the severity of whiplash injury in certain rear-end collisions. **58.** Hill Start Assist Control is designed to help minimize backward rolling on steep ascents. It is not a substitute for safe driving judgment and practices. Factors including speed, grade, surface conditions and driver input can all affect whether HAC will be effective in preventing a loss of control. See *Owner's Manual* for additional limitations and details. **59.** ToyotaCare covers normal factory scheduled maintenance for two years or 25,000 miles, whichever comes first. Certain models require a different maintenance schedule as described in their Maintenance Guide. 24-hour Roadside Assistance is also included for two years, unlimited mileage. Roadside Assistance does not include parts and fluids, except emergency fuel delivery. See Toyota dealer for details and exclusions. Valid only in the continental U.S.

Toyota strives to build vehicles to match customer interest and thus they typically are built with popular options and option packages. Not all options/packages are available separately and some may not be available in all regions of the country. See toyota.com for information about options/packages commonly available in your area. If you would prefer a vehicle without any or with different options, contact your dealer to check for current availability or the possibility of placing a special order.

Color(s) depicted may vary based on multiple factors, including ambient lighting and the format in which it is being viewed (e.g., computer, mobile device or print).

Some vehicles are shown with available equipment. Seatbelts should be worn at all times. For details on vehicle specifications, standard features and available equipment in your area, contact your Toyota dealer. A vehicle with particular equipment may not be available at the dealership. Ask your Toyota dealer to help locate a specifically equipped vehicle.

All information presented herein is based on data available at the time of posting, is subject to change without notice and pertains specifically to mainland U.S.A. vehicles only. Vehicles shown may be prototypes, shown using visual effects and/or shown with options. Actual models may vary.



Mobility

For Toyota Mobility program details, go to www.toyota.com/mobility or call the Toyota Brand Engagement Center at 1-800-331-4331