



Nissan Intelligent Mobility moves you one step ahead. In cars that feel like an extension of you, helping you see more and sense more, reacting with you, and sometimes even for you. Nissan Intelligent Mobility is about a better future – moving through life with greater confidence, excitement and connection to the world around you.



ROGUE®
2021

¹Driving is serious business and requires your full attention. If you have to use the feature while driving, exercise extreme caution at all time so full attention may be given to vehicle operation. ²Information displayed is dependent on how vehicle is equipped. ³Availability of features vary by vehicle model year, model, trim level, packaging, and options. Please see Owner's Manual for important feature information. ⁴Leather appointments. ⁵*AutoPacific* Segmentation. 2021 Rogue Platinum and above vs. latest in-market competitors in the XSUV Mainstream Midsize Class. Available feature. Based on manufacturer websites. ⁶*AutoPacific* Segmentation. 2021 Rogue SL with Premium Package and above vs. latest in-market competitors in the XSUV Mainstream Midsize Class. Available feature. Based on manufacturer websites. ⁷Driving is serious business and requires your full attention. If you have to use the connected device while driving, exercise extreme caution at all times so full attention may be given to vehicle operation. ⁸*AutoPacific* Segmentation. 2021 Rogue SL and above vs. latest in-market competitors in the XSUV Mainstream Midsize Class. Available feature. Based on manufacturer websites. ⁹Intelligent All-Wheel Drive cannot prevent collisions or provide enhanced traction in all conditions. Always monitor traffic and weather conditions. ¹⁰Genuine Nissan Accessory Roof Rail Crossbars have a maximum weight limit of 100 lbs. ¹¹Cargo shown for display purposes only. Cargo and load capacity limited by weight and distribution. Always secure cargo. Heavy loading of the vehicle with cargo, especially on the roof, will affect the handling and stability of the vehicle. ¹²Not a genuine Nissan part/accessory. Not warranted by Nissan. Refer to product manufacturer for warranty details. Nissan Limited Warranty does not cover damages or failures to the vehicle caused by improper installation or alterations of any Nissan approved accessory or component. Contact your dealer/retailer for details. ¹³ProPILOT Assist and ProPILOT Assist with Navi-link cannot prevent collisions. It is the driver's responsibility to be in control of the vehicle at all times. Always monitor traffic conditions and keep both hands on the steering wheel. System operates only when lane markings are detected. Does not function in all weather, traffic and road conditions. System has limited control capability and the driver may need to steer, brake or accelerate at any time to maintain safety. See Owner's Manual for safety information. ¹⁴Available feature. ¹⁵*AutoPacific* Segmentation. 2021 Rogue SL with Premium Package vs. latest in-market competitors in the XSUV Mainstream Midsize Class. Available services/features may be shown. Compatible connected device may be required. Only use services/features and device when safe and legal to do so. Subject to GPS and wireless network availability and connection, and system/technology limitations. Text rates/data usage/subscription may apply. Some services/features provided by companies not within Nissan or its partners' or agents' control and may be discontinued at any time. For more information, see dealer, owner's manual, or NissanUSA.com/connect/important-information. Base models compared. Based on manufacturers' websites. ¹⁶Late availability. Expected availability Fall 2020/Winter 2021. ¹⁷Available feature shown. Use feature only when safe and legal. Compatible device and service required. Subject to third party service availability. For more information see NissanUSA.com/connect/legal. ¹⁸*AutoPacific* Segmentation. 2021 Rogue S and above vs. latest in-market competitors in the XSUV Mainstream Midsize Class. Nissan Safety Shield 360 Technologies include Automatic Emergency Braking with Pedestrian Detection, Blind Spot Warning, Rear Cross Traffic Alert, Lane Departure Warning, High Beam Assist and Rear Automatic Braking. See Owner's Manual for safety information. Base models compared. Based on manufacturer websites. ¹⁹Nissan Safety Shield technologies can't prevent all collisions or warn in all situations. See Owner's Manual for important safety information. ²⁰Automatic Emergency Braking with Pedestrian Detection cannot prevent all collisions and may not provide warning or braking in all conditions. Driver should monitor traffic conditions and brake as needed to prevent collisions. See Owner's Manual for safety information. ²¹*AutoPacific* Segmentation. 2021 Rogue S and above vs. latest in-market competitors in the XSUV Mainstream Midsize Class. Rear Automatic Braking cannot prevent all collisions and may not provide warning or braking in all conditions. Driver should always turn and check surroundings before driving and brake as needed to prevent collisions. See Owner's Manual for safety information. Base models compared. Based on manufacturer websites. ²²Rear Automatic Braking cannot prevent all collisions and may not provide warning or braking in all conditions. Driver should always turn and check surroundings before driving and brake as needed to prevent collisions. See Owner's Manual for safety information. ²³Rear Cross Traffic Alert may not detect all vehicles. See Owner's Manual for safety information. ²⁴Blind Spot Warning cannot prevent collisions and may not detect every object or warn in all situations. Driver should always turn and look before changing lanes. See Owner's Manual for safety information. ²⁵Lane Departure Warning operates only when lane markings are able to be detected. See Owner's Manual for safety information. ²⁶*AutoPacific* segmentation. 2021 Rogue SV and above vs. latest in-market competitors in XSUV Mainstream Midsize Class. Available feature. Divide-n-Hide refers to multi-board storage system. Cargo and load capacity limited by weight and distribution. Always secure all cargo. Heavy loading of the vehicle with cargo, especially on the roof, will affect the handling and stability of the vehicle. Based on manufacturers' websites. ²⁷Extra cost option. ²⁸Intelligent Forward Collision Warning cannot prevent collisions. See Owner's Manual for safety information. ²⁹Intelligent Driver Alertness cannot provide a warning in every situation. See Owner's Manual for safety information. ³⁰Does not detect people or cargo. Always check rear seat before exiting. See Owner's Manual for safety information. ³¹Air bags are only a supplemental restraint system. Always wear your seat belt. Rear-facing child restraints should not be placed in the front-passenger's seat. All children 12 and under should ride in the rear seat properly secured in child restraints, booster seats, or seat belts according to their size. Air bags will only inflate in certain accidents. See Owner's Manual for safety information. ³²Intelligent Blind Spot Intervention cannot prevent all collisions and may not detect every object or warn in all situations. Driver should always turn and look before changing lanes. See Owner's Manual for safety information. ³³Intelligent Lane Intervention only operates when lane markings are detectable. See Owner's Manual for safety information. ³⁴Intelligent Around View® Monitor cannot eliminate blind spots and may not detect every object. Driver should always turn and check surroundings before driving. See Owner's Manual for safety information. ³⁵State laws may apply. Review before using. ³⁶Sonar System may not detect every object. Driver should always check surroundings before driving. See Owner's Manual for safety information. ³⁷Traffic Sign Recognition may not detect and read all traffic signs in all conditions. Driver should monitor all traffic signs and obey all traffic laws. See Owner's Manual for details. ³⁸Never program while driving. GPS mapping may not be detailed in all areas or reflect current road status. ³⁹Genuine Nissan Accessories are covered by Nissan's limited warranty on Genuine Nissan Replacement Parts, Genuine NISMO® S-Tune Parts, and Genuine Nissan Accessories for the longer of 12 months/12,000 miles (whichever occurs first) or the remaining period under the 36-months/36,000-mile (whichever occurs first) new vehicle limited warranty. Terms and conditions apply. See dealer, warranty information booklet, or parts.nissanusa.com for details. ⁴⁰Brake Assist cannot prevent all collisions and may not provide warning or braking in all conditions. Driver should monitor traffic conditions and brake as needed to prevent collisions. See Owner's Manual for safety information. ⁴¹RearView Monitor may not detect every object and does not eliminate blind spots or warn of moving objects. See Owner's Manual for safety information. ⁴²Vehicle Dynamic Control cannot prevent collisions due to abrupt steering, carelessness, or dangerous driving techniques. It should remain on when driving, except when freeing the vehicle from mud or snow. See Owner's Manual for safety information. ⁴³Intelligent Trace Control cannot prevent collisions or loss of control. Driver should remain in control of vehicle at all times. See Owner's Manual for safety information. ⁴⁴Use the text messaging feature after stopping your vehicle in a safe location. If you have to use the feature while driving, exercise extreme caution at all times so full attention may be given to vehicle operation. Compatible smartphone required. Text rates and/or data usage may apply. ⁴⁵Tire Pressure Monitoring System is not a substitute for regular tire pressure checks. See Owner's Manual for safety information. ⁴⁶Vehicle must be on for the Easy-Fill Tire Alert to operate. ⁴⁷2021 EPA Fuel Economy Estimates 27 City MPG / 35 Highway MPG / 30 Combined MPG for Rogue® S FWD; 26 City MPG / 33 Highway MPG / 29 Combined MPG for Rogue S AWD; 26 City MPG / 34 Highway MPG / 29 Combined MPG for Rogue SV, SL, and Platinum FWD; 25 City MPG / 32 Highway MPG / 28 Combined MPG for Rogue SV, SL, and Platinum AWD. Actual mileage may vary with driving conditions. Use for comparison only. ⁴⁸Roadside Assistance available for a period of 36 months/36,000 miles from the date the vehicle is delivered to the first retail buyer or otherwise put into use, whichever is earlier. Android Auto, Google, YouTube, and other related marks are trademarks of Google LLC. Apple CarPlay® is registered a trademark of Apple, Inc. Bluetooth® is a registered trademark of Bluetooth SIG, Inc. Bose® is a registered trademark of The Bose Corporation. ChromaFlair® is a registered trademark of Optical Coating Laboratory, LLC. Facebook® is a registered trademark of Facebook, Inc. Siri® is a registered trademark of Apple, Inc. The Sirius®, XM®, and SiriusXM® names and all related marks and logos are trademarks of Sirius XM Radio Inc. All other trademarks are the property of their respective owners. Twitter® is a registered trademark of Twitter, Inc. This brochure is intended for general descriptive and informational purposes only. It is subject to change and does not constitute an offer, representation or warranty (express or implied) by Nissan North America, Inc. Interested parties should confirm the accuracy of any information in this brochure as it relates to a vehicle directly with Nissan North America, Inc., before relying on it to make a purchase decision. Nissan North America, Inc., reserves the right to make changes, at any time, without prior notice, in prices, colors, materials, equipment, specifications, and models and to discontinue models or equipment. Due to continuous product development and other pre- and post-production factors, actual vehicle, materials and specifications may vary from this brochure. Some vehicles shown with optional equipment. See the actual vehicle for complete accuracy. Availability and delivery times for particular models or equipment may vary. Specifications, options and accessories may differ in Hawaii, U.S. territories and other countries. For additional information on availability, options or accessories, see your Nissan dealer or contact Nissan North America, Inc. At NissanUSA.com, you'll find virtual product demonstrations, a way to "build your own Nissan," a dealer locator, and more information about key Nissan support services. Or if you'd prefer, call **1-800-NISSAN-3** for answers to specific questions about Rogue® or any other Nissan vehicle. The Nissan names, logos, product names, feature names, and slogans are trademarks owned by or licensed to Nissan Motor Co. Ltd. and/or its North American subsidiaries. Other trademarks and trade names are those of their respective owners. **Always wear your seat belt, and please drive responsibly.** ©2020 Nissan North America, Inc. '21 Rogue®. 213339-N-10/20-100K-KSL





How will you go Rogue?

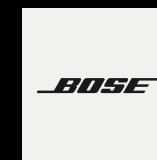
Capable of crossing over into every aspect of your day in fresh, unexpected ways. Thinking fast and responding faster. A never-ending capacity for adventure. This is the all-new Nissan Rogue.

Nissan Rogue® Platinum AWD shown in Two-tone Boulder Gray Pearl / Super Black.



Three genius displays, so many pixels to play with

Start with the largest head-up display in its class in the upper left corner,⁵ then drop your gaze to the digital dashboard — twelve inches of available vibrant data right behind the steering wheel.^{1,2} The third display, the largest available infotainment screen in its class, sits just to the right.⁶ Together, they offer nearly three feet of digital information, allowing you to configure the all-new Rogue® to what you need in the moment. Now look again. See how each display is positioned to give you the info you want? This is customization pixel by pixel.



You heard it here first. Bose, a leader in high-fidelity sound systems and a long-time Nissan partner, designed an available highly customized listening experience for the all-new Rogue. Based on proprietary design and the acoustical analysis of the cabin, Bose brings the power of sound to every seat.



Room for five, space for even the biggest personalities

Pick your seat and relax. Building a crossover from the ground up is about more than premium amenities. It's about designing an experience, where family and friends feel welcome and any size personality fits in. So enjoy the available soft semi-aniline leather appointments, the rear USB ports,⁷ and the class-exclusive available Tri-Zone Automatic Temperature Control.⁸ Revel in rear doors that open almost 90° for easier entry. And amaze everyone with the breathtaking view from the available Dual Panel Panoramic Moonroof.

Nissan Rogue® Platinum AWD shown in Charcoal Quilted Semi-aniline Leather.⁴

Dial in adventure

Meet Nissan's most capable Rogue® yet. An all-new available Intelligent All-Wheel Drive system with direct coupling reacts quicker than ever to help enhance stability and traction.⁹ With so many possibilities in front of you, there's virtually no limit to where you can go. That's why Rogue offers up to five drive modes for practically every scenario. Choose Auto Mode to handle your everyday drive, or select one of the specialized modes to tackle more challenging conditions.

Snow Mode If one of your favorite routes has fresh powder, available Snow Mode is engineered to help you make fresh tracks. It knows to back off on the throttle and shift to a higher gear ratio, helping you stay in control.

Off-Road Mode From gravel to sand to dirt, available Off-Road Mode is uniquely tuned to help you get up to speed. By balancing the transmission and throttle response, the all-new Rogue tailors your all-terrain experience for maximum confidence.

Eco Mode Like its name implies, Eco Mode is engineered to help boost fuel economy. When selected, engine and Xtronic CVT® (Continuously Variable Transmission) controls change to help you drive as efficiently as possible.

Sport Mode The fun starts here, especially if you're about to take on a series of curves. Dial up Sport Mode and the all-new Rogue responds with tighter steering and sharper throttle response. You respond with growing confidence and huge grins as you enter every twist and turn.





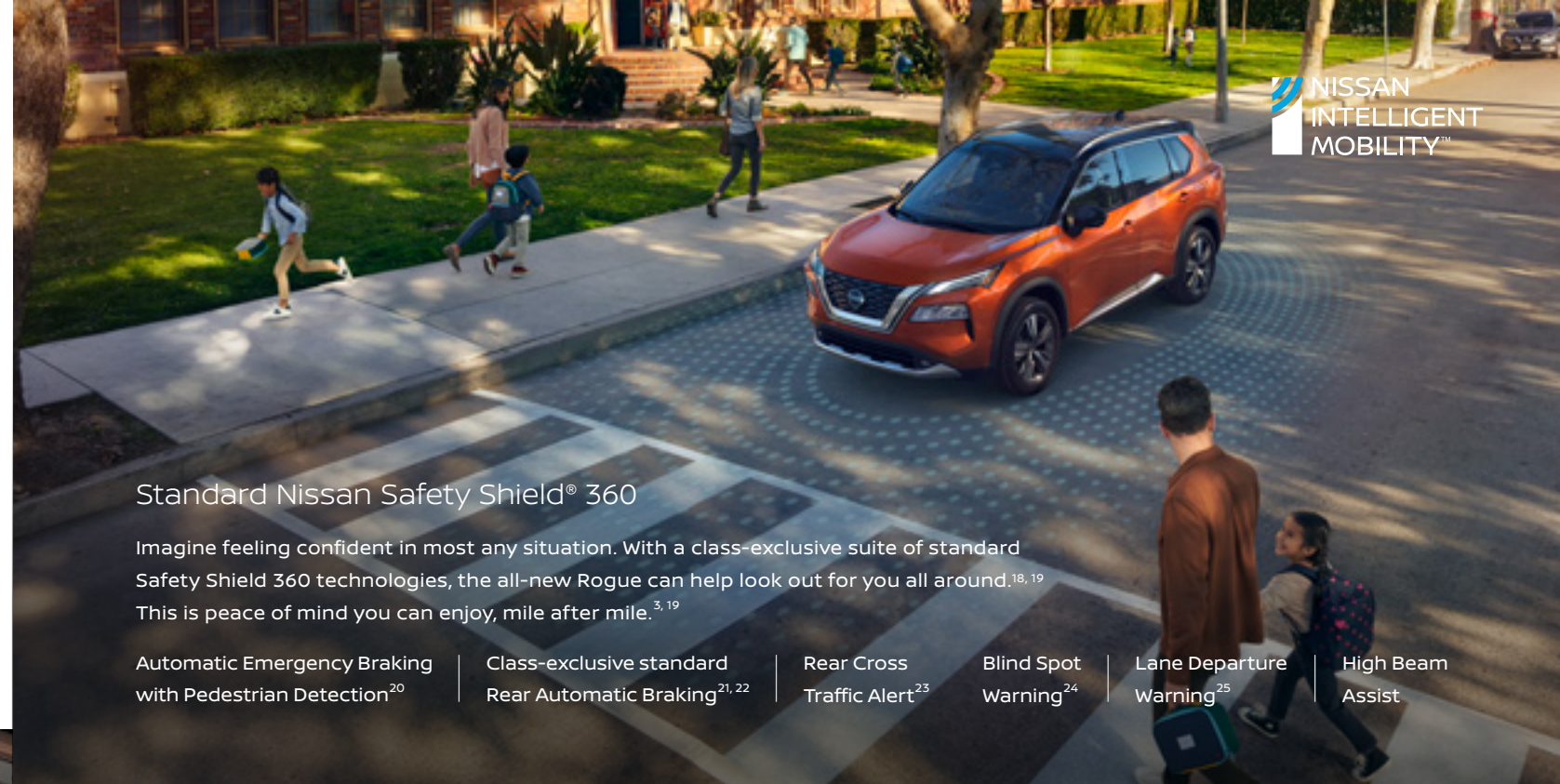
Unexpected cargo flexibility

Kick your foot under the rear bumper and the available Motion Activated Liftgate opens to reveal a generous cargo area.¹¹

Inside, it's easy to configure the space. With the class-exclusive available Divide-N-Hide[®] cargo system, a set of adjustable dividers gives you six different configurations. You can construct everything from a private storage area to a series of layered shelves. So get in there and mix it up.^{11, 26}



Want even more space? It's as easy as pulling an available lever in the cargo area and watching the rear seats fold down to take in every experience.¹¹



Standard Nissan Safety Shield[®] 360

Imagine feeling confident in most any situation. With a class-exclusive suite of standard Safety Shield 360 technologies, the all-new Rogue can help look out for you all around.^{18, 19} This is peace of mind you can enjoy, mile after mile.^{3, 19}

Automatic Emergency Braking with Pedestrian Detection²⁰

Class-exclusive standard Rear Automatic Braking^{21, 22}

Rear Cross Traffic Alert²³

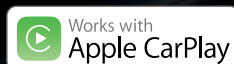
Blind Spot Warning²⁴

Lane Departure Warning²⁵

High Beam Assist

Smarter phone connectivity

Class-exclusive available wireless Apple CarPlay[®] integration¹⁵ People to see? Places to be? Just ask Siri[®]. Equipped with Siri[®] voice control, Apple CarPlay[®] brings your contacts, favorite messaging apps, Apple Music[®] playlists, Apple Maps, and more on board to your Rogue. No need to plug-in. Your world is now freed from wires.^{7, 16, 17}



Wireless charging You're always on the move, sometimes changing direction on a moment's notice. Keep going without the clutter or frustration of cords. Wirelessly recharge your compatible smartphone and re-energize your life.^{7, 14}

New ProPILOT Assist with Navi-link

You may not know what's ahead but with ProPILOT Assist with Navi-link, the all-new Rogue[®] is on it.^{13, 14}

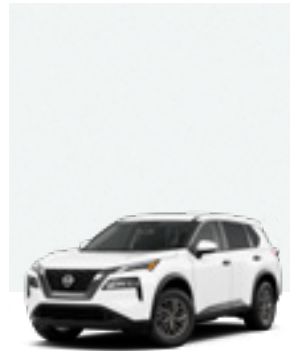
ProPILOT Assist helps you navigate stop-and-go highway traffic while also helping to keep you centered in your lane.^{13, 14} Opt for the new ProPILOT Assist with Navi-link and the concept of hassle-free driving rises to a new level.^{13, 14}

By utilizing highway mapping, ProPILOT Assist with Navi-link is able to "read the road." What it does with that information gives you a totally new perspective.^{13, 14}

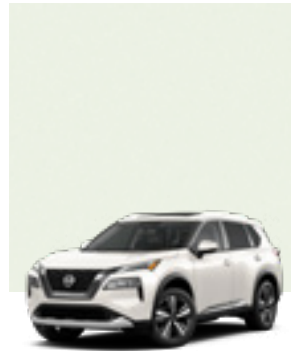
- Helps smooth the way for upcoming turns, junctions, and off-ramps by adjusting your speed
- Can track posted speed limits with the ability to alter your set speed accordingly



CHOOSE YOUR COLOR



Glacier White



Pearl White TriCoat²⁷



Brilliant Silver Metallic



Gun Metallic

	S	SV	SL	PLT
CHARCOAL CLOTH	■			
LIGHT GRAY CLOTH				
CHARCOAL LEATHERETTE				
LIGHT GRAY LEATHERETTE				
CHARCOAL LEATHER ⁴				
LIGHT GRAY LEATHER ⁴				
CHARCOAL SEMI-ANILINE LEATHER ⁴				
TAN SEMI-ANILINE LEATHER ⁴				

■ Standard
P Part of SV Premium Package

Nissan has taken care to ensure that the color swatches presented here are the closest possible representations of actual vehicle colors. Swatches may vary slightly due to the printing process and whether viewed in daylight, fluorescent or incandescent light. Please see the actual colors at your dealer.



Boulder Gray Pearl



Scarlet Ember Tintcoat²⁷

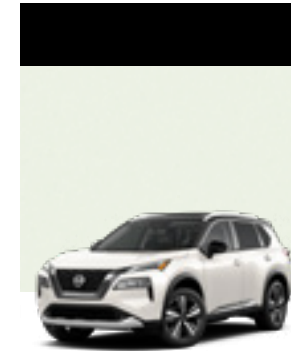


Caspian Blue Metallic



Super Black

	S	SV	SL	PLT
CHARCOAL CLOTH				
LIGHT GRAY CLOTH				
CHARCOAL LEATHERETTE				
LIGHT GRAY LEATHERETTE				
CHARCOAL LEATHER ⁴				
LIGHT GRAY LEATHER ⁴				
CHARCOAL SEMI-ANILINE LEATHER ⁴				
TAN SEMI-ANILINE LEATHER ⁴				



Two-tone Pearl White TriCoat / Super Black²⁷



Two-tone Boulder Gray Pearl / Super Black²⁷



Two-tone Champagne Silver Metallic / Super Black²⁷



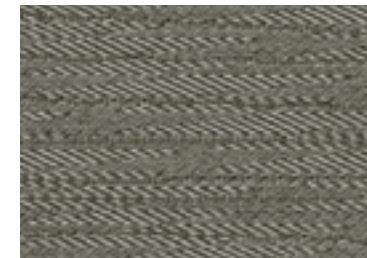
Two-tone Sunset Drift ChromaFlair® / Super Black²⁷



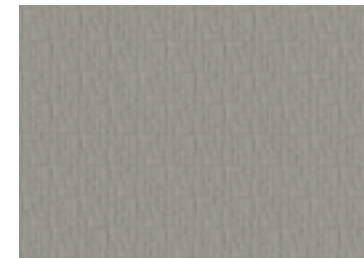
Two-tone Caspian Blue Metallic / Super Black²⁷

	S	SV	SL	PLT
CHARCOAL CLOTH				
LIGHT GRAY CLOTH				
CHARCOAL LEATHERETTE				
LIGHT GRAY LEATHERETTE				
CHARCOAL LEATHER ⁴				
LIGHT GRAY LEATHER ⁴				
CHARCOAL SEMI-ANILINE LEATHER ⁴				
TAN SEMI-ANILINE LEATHER ⁴				

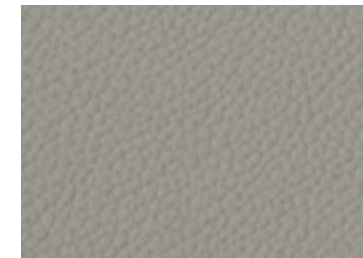
CHOOSE YOUR INTERIOR



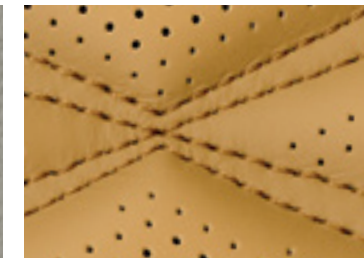
Light Gray Cloth SV



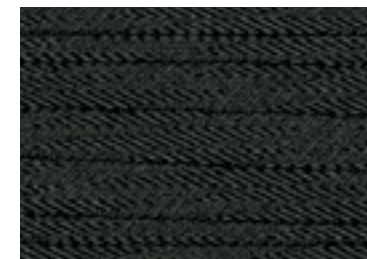
Light Gray Leatherette SV



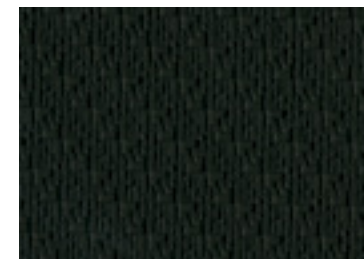
Light Gray Leather⁴ SL



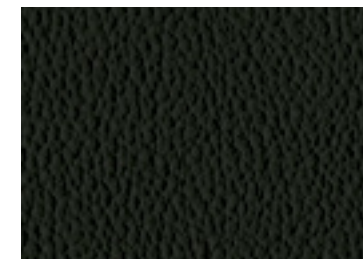
Tan Semi-aniline Leather⁴ Platinum



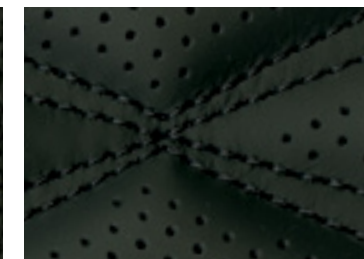
Charcoal Cloth S|SV



Charcoal Leatherette SV



Charcoal Leather⁴ SL



Charcoal Semi-aniline Leather⁴ Platinum

CHOOSE YOUR TRIM LEVEL

S

- 2.5-liter Direct Injection Gasoline™ (DIG) 4-cylinder engine with 181 hp and 181 lb-ft of torque
- Available Intelligent All-Wheel Drive (AWD)⁹
- Intelligent Forward Collision Warning²⁸
- Automatic Emergency Braking with Pedestrian Detection²⁰
- Lane Departure Warning²⁵
- Blind Spot Warning²⁴
- Rear Cross Traffic Alert²³
- Rear Automatic Braking²²
- High Beam Assist
- Intelligent Driver Alertness²⁹
- 17" Aluminum-alloy wheels
- LED headlights with LED Daytime Running Lights
- LED taillights
- Rear Door Alert³⁰
- Advanced Drive-Assist® Display^{1, 2}
- NissanConnect® 8" touch-screen display¹⁷
- Apple CarPlay® integration¹⁷
- Android Auto™¹⁷
- Nissan Advanced Air Bag System³¹



SV INCLUDES S EQUIPMENT PLUS:

- ProPILOT Assist¹³
- Intelligent Blind Spot Intervention³²
- Intelligent Lane Intervention³³
- Intelligent Around View® Monitor³⁴
- 18" Aluminum-alloy wheels
- Heated outside mirrors with LED turn signal indicators
- Dual Zone Automatic Temperature Control
- Nissan Intelligent Key® with Push Button Ignition
- Remote Engine Start System³⁵ with Intelligent Climate Control
- 8-way power driver's seat, with 2-way power lumbar support
- NissanConnect® Services powered by SiriusXM® with trial access to 5-year Select and 6-month Premium package¹⁷
- Wi-Fi Hotspot¹⁷
- AM/FM audio system with six speakers
- Two USB ports and two USB-C ports⁷

AVAILABLE PACKAGE:

- Premium Package



SL INCLUDES SV EQUIPMENT PLUS:

- 19" Aluminum-alloy wheels
- LED fog lights
- Roof rails¹¹
- Motion Activated Liftgate
- Dual Panel Panoramic Moonroof
- Tri-Zone Automatic Temperature Control
- Rear sunshades
- Auto-dimming inside rearview mirror
- Outside mirrors with reverse tilt-down feature
- Divide-N-Hide® cargo system¹¹
- 4-way power front-passenger's seat
- Memory System - driver's seat and outside mirrors
- Remote-folding rear seats
- Leather-appointed seats
- Leather-wrapped steering wheel
- Heated front seats
- Heated steering wheel

AVAILABLE PACKAGE:

- Premium Package



PLATINUM INCLUDES SL EQUIPMENT PLUS:

- ProPILOT Assist with Navi-link¹³
- Front, Rear, and Side Sonar System³⁶
- Traffic Sign Recognition³⁷
- Interior accent lighting
- Quilted Semi-aniline leather-appointed seats
- Heated rear seats
- Digital dashboard with fully digital gauges^{1, 2}
- NissanConnect® 9" touch-screen display¹⁷
- Nissan Door to Door Navigation with Premium Traffic³⁸
- Head-Up Display
- NissanConnect® Services powered by SiriusXM® with trial access to 5-year Plus, 5-year Select, and 6-month Premium package¹⁷
- Wireless Apple CarPlay® integration¹⁷
- SiriusXM® Traffic and Travel Link with 3-month trial subscription¹⁷
- Bose Premium Audio System, including dual-driver woofer
- Wireless charger⁷



CHOOSE YOUR PACKAGE

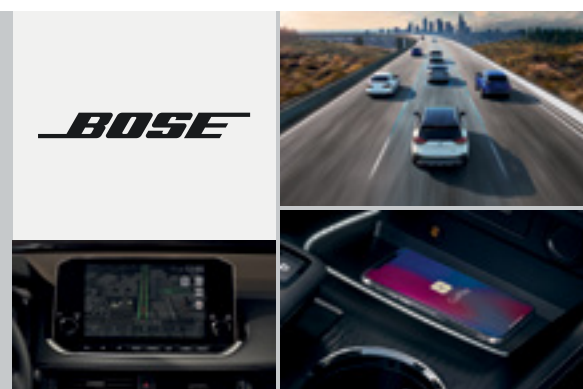
SV PREMIUM PACKAGE

- Roof rails¹¹
- Power liftgate
- Dual Panel Panoramic Moonroof
- Rear sunshades
- Leatherette-appointed seats
- Leather-wrapped steering wheel
- Heated front seats
- Heated steering wheel



SL PREMIUM PACKAGE

- ProPILOT Assist with Navi-link¹³
- Front and Rear Sonar System³⁶
- Traffic Sign Recognition³⁷
- NissanConnect® 9" touch-screen display¹⁷
- Nissan Door to Door Navigation with Premium Traffic³⁸
- NissanConnect® Services powered by SiriusXM® with trial access to 5-year Plus, 5-year Select, and 6-month Premium package¹⁷
- Wireless Apple CarPlay® integration^{16, 17}
- SiriusXM® Traffic and Travel Link with 3-month trial subscription¹⁷
- Bose Premium Audio System, including dual-driver woofer





Sign up to get the latest on
Nissan vehicles, news, and events.

<https://www.nissanusa.com/brochures/request-brochure.html>

CHOOSE YOUR ACCESSORIES



A. Interior Accent Lighting

Set the mood with a range of colors in the front, rear and cup holders.

B. Pet Divider

Keep your pet secure behind 2nd-row seats. **(Also shown:** Carpeted Cargo Area Seatback Protector and Carpeted Cargo Area Protector, 2-piece)

C. Satin Chrome Rear Bumper Protector

Protect your bumper from dings and scratches in style. **(Also shown:** Rear Underbody Trim and Carpeted Rear Cargo Area Protector, 2-piece)

D. Illuminated Kick Plates

For a grand entry, every time. **(Also shown:** Interior Accent Lighting and driver-side Carpeted Floor Mat)

E. Retractable Cargo Cover¹¹

Keep important items out of view. **(Also shown:** Satin Chrome Rear Bumper Protector and Carpeted Cargo Area Protector, 1-piece)

F. Wireless Smartphone Charger⁷

Your charging cord is officially obsolete.

G. All-Season Floor Mats

Stepping inside from the rain or snow? No problem.

H. Cargo Net¹¹

The easy solution to bringing more. **(Also shown:** Satin Chrome Rear Bumper Protector and Rear Underbody Trim)

Additional Accessories:

- Carpeted Floor Mats
- Dual USB Rear Charging Ports⁵⁷
- Remote Engine Start System³⁵
- Clear Film Hood Protector
- Hood Deflector
- Clear Door Edge Protectors
- Cargo Blocks/Stabilizers¹¹
- Portable Cargo Organizer¹¹
- Impact Sensor
- Nissan Stainless Steel License Plate Frame
- Nissan Valve Stem Caps (4-piece set)
- Seat Cover with Storage
- And More

NISSAN ROGUE® ACCESSORIES

Turn brand-new into all you

Every Genuine Nissan Accessory is custom-fit, custom-designed and durability-tested. Each one is backed by Nissan's 3-year/36,000-mile (whichever occurs first) limited warranty (if installed by dealer at the time of purchase), and can be financed when installed by dealer at time of purchase.³⁹ Affiliated Yakima® accessories are not warranted by Nissan. Refer to product manufacturer for warranty details. Nissan Limited Warranty does not cover damages or failures to the vehicle caused by improper installation or alterations of any Nissan approved accessory or component. Contact your dealer/retailer for details.

For more information and to shop online for Rogue® Genuine Nissan Accessories, go to bit.ly/21rogue-estore



Left: **Nissan Rogue® Platinum AWD** shown in Two-tone Champagne Silver Metallic / Super Black with Exterior Ground Lighting, Side-Window Deflectors, Satin Chrome Rear Bumper Protector, Splash Guards, Rear Underbody Trim, Roof Rail Crossbars,¹⁰ and Yakima® ForkLift.^{11, 12}

Right: **Nissan Rogue® Platinum AWD** shown in Caspian Blue Metallic with LED Fog Lights (standard on Platinum), Exterior Ground Lighting, Hood Deflector, Side-Window Deflectors, Splash Guards, Front Underbody Trim, Roof Rail Crossbars,¹⁰ and Yakima® LoadWarrior.^{11, 12}

SPECIFICATIONS

Engine	S	SV	SL	PLT
2.5-liter DOHC 16-valve Direct Injection Gasoline™ (DIG) 4-cylinder engine	■	■	■	■
— Horsepower – 181 hp @ 6,000 rpm	■	■	■	■
— Torque – 181 lb-ft @ 3,600 rpm	■	■	■	■
Continuously Variable Valve Timing Control System (CVTCS)	■	■	■	■
Direct Injection Gasoline (DIG)	■	■	■	■

Drivetrain	S	SV	SL	PLT
Front-Wheel Drive (FWD)	■	■	■	■
Intelligent All-Wheel Drive (AWD) ⁹	□	□	□	□
Xtronic CVT® (Continuously Variable Transmission) with Manual Mode	■	■	■	■
Electronic shifter	■	■	■	■
Paddle shifters	■	■	■	■
Eco and Sport Modes	■	■	■	■
Snow and Off-Road Modes	□	□	□	□

Brakes	S	SV	SL	PLT
Front and rear vented disc brakes	■	■	■	■
4-wheel Anti-lock Braking System (ABS)	■	■	■	■
Electronic Brake force Distribution	■	■	■	■
Brake Assist ⁴⁰	■	■	■	■
Electronic parking brake	■	■	■	■

Suspension/Steering	S	SV	SL	PLT
Independent strut front suspension	■	■	■	■
Independent multi-link rear suspension	■	■	■	■
Front and rear stabilizer bars	■	■	■	■

Driver Assistance Technologies	S	SV	SL	PLT
Cruise control	■			
ProPILOT Assist ¹³		■	■	
ProPILOT Assist with Navi-link ¹³			P2	■
Intelligent Forward Collision Warning ²⁸	■	■	■	■
Automatic Emergency Braking with Pedestrian Detection ²⁰	■	■	■	■
Lane Departure Warning ²⁵	■	■	■	■
Intelligent Lane Intervention ³³		■	■	■
Blind Spot Warning ²⁴	■	■	■	■
Intelligent Blind Spot Intervention ³²		■	■	■
Rear Cross Traffic Alert ²³	■	■	■	■
RearView Monitor ⁴¹	■			
Intelligent Around View® Monitor ³⁴	■	■	■	■
Rear Sonar System ³⁶	■	■	■	■
Front and Rear Sonar System ³⁶			P2	
Front, Rear, and Side Sonar System ³⁶				■
Rear Automatic Braking ²²	■	■	■	■
High Beam Assist	■	■	■	■
Vehicle Dynamic Control (VDC) with Traction Control System (TCS) ⁴²	■	■	■	■
Intelligent Trace Control ⁴³	■	■	■	■
Active Ride Control	■	■	■	■
Hill start assist	■	■	■	■
Automatic Brake Hold	■	■	■	■
Intelligent Driver Alertness ²⁹	■	■	■	■
Traffic Sign Recognition ³⁷			P2	■

Wheels/Tires	S	SV	SL	PLT
17" Aluminum-alloy wheels	■			
18" Aluminum-alloy wheels		■		
19" Aluminum-alloy wheels			■	■
P235/65R17 All-season tires	■			
P235/60R18 All-season tires		■		
P235/55R19 All-season tires			■	■

Exterior Features	S	SV	SL	PLT
Intelligent Auto Headlights	■	■	■	■
LED headlights with LED Daytime Running Lights	■	■	■	■
LED taillights	■	■	■	■
LED fog lights			■	■
Dual power outside mirrors	■	■	■	■
Heated outside mirrors with LED turn signal indicators		■	■	■
Roof rails ¹¹		P1	■	■
Rear spoiler	■	■	■	■
Power liftgate		P1		
Motion Activated Liftgate			■	■
Dual Panel Panoramic Moonroof		P1	■	■
UV-reducing solar glass	■	■	■	■
Rear privacy glass	■	■	■	■

Comfort/Convenience	S	SV	SL	PLT
Air conditioning	■			
Dual Zone Automatic Temperature Control		■		
Tri-Zone Automatic Temperature Control			■	■
In-cabin microfilter	■	■	■	■
Rear passenger vents	■	■	■	■
Rear Door Alert ³⁰		■	■	■
Rear sunshades		P1	■	■
Power windows with driver's one-touch auto-up/down feature	■	■	■	■
Power door locks with auto-locking feature	■	■	■	■
Integrated Key with remote keyless entry and Push Button Ignition	■		■	■
Nissan Intelligent Key® with Push Button Ignition		■	■	■
Remote Engine Start System ³⁵ with Intelligent Climate Control		■	■	■
Tilt and telescoping steering column	■	■	■	■
Auto-dimming inside rearview mirror			■	■
Outside mirrors with reverse tilt-down feature			■	■
Interior accent lighting			■	■
Variable intermittent flat-blade windshield wipers	■	■	■	■
Intermittent rear window wiper	■	■	■	■
Two 12-volt DC power outlets	■	■	■	■
Sun visors with illuminated vanity mirrors	■	■	■	■
Overhead LED map lights	■	■	■	■
Four cup holders	■	■	■	■
Four bottle holders	■	■	■	■
Front seatback pockets	■	■	■	■
Four cargo tie-down hooks ¹¹	■	■	■	■
Divide-N-Hide® cargo system ¹¹			■	■

Seating/Appointments	S	SV	SL	PLT
6-way manual driver's seat	■			

Seating/Appointments (continued)	S	SV	SL	PLT
8-way power driver's seat, with 2-way power lumbar support		■	■	■
4-way manual front-passenger's seat	■	■		
4-way power front-passenger's seat			■	■
Memory System – driver's seat and outside mirrors			■	■
60/40-split folding rear seat	■	■	■	■
Remote-folding rear seats			■	■
Cloth seat trim	■			
Leatherette-appointed seats		P1		
Leather-appointed seats			■	
Quilted semi-aniline leather-appointed seats				■
Leather-wrapped steering wheel		P1	■	■
Heated front seats		P1	■	■
Heated rear seats				■
Heated steering wheel		P1	■	■

Infotainment	S	SV	SL	PLT
Advanced Drive-Assist® Display ^{1, 2}	■	■	■	
Digital dashboard with fully digital gauges ^{1, 2}				■
NissanConnect® 8" touch-screen display ¹⁷	■	■	■	
NissanConnect® 9" touch-screen display ¹⁷			P2	■
Nissan Door to Door Navigation with Premium Traffic ³⁸			P2	■
Head-Up Display				■
Voice Recognition ³⁹	■	■	■	■
NissanConnect® Services powered by SiriusXM® with trial access to 5-year Select and 6-month Premium package ¹⁷		■	■	
NissanConnect® Services powered by SiriusXM® with trial access to 5-year Plus, 5-year Select, and 6-month Premium package ¹⁷			P2	■
Apple CarPlay® integration ¹⁷	■	■	■	■
Wireless Apple CarPlay® integration ^{16, 17}			P2	■
Android Auto™ ¹⁷			■	■
Wi-Fi Hotspot ¹⁷		■	■	■
SiriusXM® Traffic and Travel Link with 3-month trial subscription ¹⁷			P2	■
Hands-free Text Messaging Assistant ⁴⁴	■	■	■	■
Bluetooth® Hands-free Phone System ¹⁷	■	■	■	■
AM/FM audio system with four speakers	■			
AM/FM audio system with six speakers		■	■	
Bose Premium Audio System, including dual-driver woofer			P2	■
Auxiliary audio input jack ⁷	■	■	■	■
One USB port and one USB-C port ⁷	■			
Two USB ports and two USB-C ports ⁷		■	■	■
Wireless charger ⁷				■
Streaming Audio via Bluetooth® ^{9, 17}	■	■	■	■
SiriusXM® Radio with 3-month trial subscription ¹⁷	■	■	■	■
Radio Data System (RDS)	■	■	■	■
Speed-sensitive volume control	■	■	■	■

Safety/Security	S	SV	SL	PLT
Nissan Advanced Air Bag System with dual-stage supplemental front air bags with seat belt and occupant-classification sensors ³¹	■	■	■	■

■ Standard □ Optional P1 Part of SV Premium Package P2 Part of SL Premium Package

Safety/Security (continued)	S	SV	SL	PLT
Seat-mounted side-impact supplemental air bags for front- and rear-seat outboard occupants ³¹	■	■	■	■
Driver seat-mounted front-center supplemental air bag ³¹				■
Driver and front-passenger supplemental knee air bags ³¹	■	■	■	■
Roof-mounted curtain supplemental air bags with rollover sensor for outboard occupant head protection for all rows ³¹	■	■	■	■
LATCH System (Lower Anchors and Tethers for Children)	■	■	■	■
Zone Body construction with front and rear crumple zones and reinforced passenger compartment	■	■	■	■
Tire Pressure Monitoring System (TPMS) with Easy-Fill Tire Alert ^{45, 46}	■	■	■	■
Vehicle Security System		■	■	■

CAPACITIES/WEIGHTS/MPG

Capacities	
Seating capacity	5
Interior passenger volume without moonroof (cu. ft.)	105.4
Interior passenger volume with moonroof (cu. ft.)	100.4
Cargo capacity without moonroof (cu. ft.) ¹¹	36.5
Cargo capacity with moonroof (cu. ft.) ¹¹	36.3
Fuel tank (gals.)	14.5

Curb Weights – Lbs.	S	SV	SL	Platinum
Base Total				
FWD	3,371	3,411	3,490	3,512
AWD	3,494	3,532	3,613	3,633

2021 EPA Fuel Economy Estimates ⁴⁷	S	SV	SL	Platinum
City/Hwy/Combined MPG (FWD)	27/35/30	26/34/29	26/34/29	26/34/29
City/Hwy/Combined MPG (AWD)	26/33/29	25/32/28	25/32/28	25/32/28

— Actual mileage may vary with driving conditions – use for comparison only.

NISSAN ROADSIDE ASSISTANCE

Your peace of mind is on us. For 36 months or 36,000 miles, whichever comes first, your new Nissan is covered for the following:⁴⁸

- Flat-tire changes
- Trip Interruption benefits
- Jump starts
- Vehicle lockouts
- Emergency fuel delivery

Follow Nissan on:



visit [NissanUSA.com/rogue](https://www.nissanusa.com/rogue)

PRINTED IN USA