

2021 Hyundai

PALISADE



For lifestyles that require three rows. And first class.

PALISADE Calligraphy in Moonlight Cloud

No matter where you go, your family does things in a big way. So does our flagship SUV, the Hyundai Palisade. Whether you choose the 7- or 8-passenger layout, the 3-row Palisade ensures everyone onboard has a prime seat for enjoying the journey.

With available HTRAC All Wheel Drive, a towing capacity of up to 5,000 pounds and up to 86.4 cubic feet of usable cargo space, Palisade prepares you to take on some serious adventures. It's also filled with advanced technologies that enable you to enjoy safer, more secure driving. Equal parts comfort and control, Palisade lets you take every road with confidence. And it's also big on versatility – check out the easy 3rd-row access offered by one-touch sliding 2nd-row seats, along with the power folding/reclining seating that's available in the 3rd row.

The availability of premium features like a hands-free smart liftgate, wireless device charging and seven USB outlets are complimented by an arsenal of Hyundai SmartSense safety technologies – many of which come standard on every Palisade model, including the stylish new Calligraphy trim. These sensor fusion innovations, together with generous amounts of advanced high-strength steel in its construction, earned the 2020 Palisade a 5-Star Overall Safety Rating from the National Highway Traffic Safety Administration.

Adding to your peace of mind, every 2021 Palisade includes America's Best Warranty and Hyundai Complimentary Maintenance for 3 years or 36,000 miles, whichever comes first.¹ It's all part of the first-class treatment you'll enjoy with Palisade.



"The 2020 Hyundai Palisade is a jack of all SUV trades, and most definitely the master of them too."² – *TheDrive.com*



Hyundai Palisade
One of the Best Family Cars of 2020
According to KBB.com³



Hyundai Palisade
Drivers' Choice Award
for Best Large Utility



Hyundai Brand
Ranked #1 in customer loyalty
for the 11th year in a row⁴



Hyundai Palisade
Named a Best New Car
of 2020 by Autotrader⁵

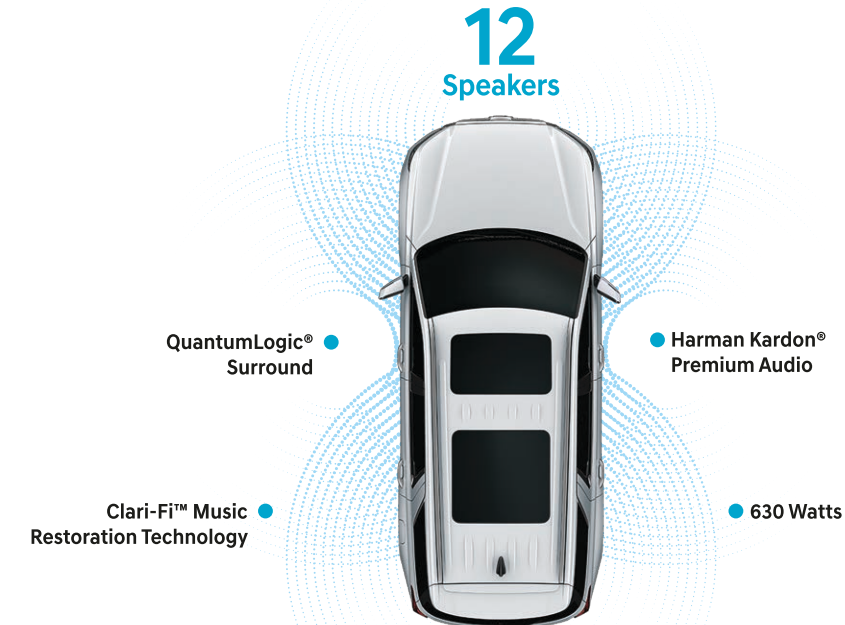
¹ Complimentary maintenance includes Hyundai-approved oil and oil filter change (except for electric vehicles and fuel cell electric vehicles) plus tire rotation at normal factory-scheduled intervals for 3 years or 36,000 miles, whichever comes first. Offer valid only for new 2020-2021 Hyundai models purchased or leased on or after February 1, 2020. See your Hyundai dealer for further details and limitations. ² From "2020 Hyundai Palisade Review: The New Value Benchmark" on TheDrive.com. ³ For more information, visit Kelley Blue Book's KBB.com. Kelley Blue Book is a registered trademark of Kelley Blue Book Co., Inc. ⁴ Based on 2010, 2011, 2012, 2013, 2014, 2015, 2016, 2017, 2018, 2019 and 2020 Brand Keys Customer Loyalty Engagement Index[®]. ⁵ For more information, visit Autotrader.com. Autotrader is a registered trademark and used with permission.

It's like sitting on top of the world.

Palisade elevates the modern aesthetics of Hyundai design – literally. Take your seat inside, and the high seating position gives you a commanding wraparound view. If you're in the driver seat, all the information you need is presented within one continuous panel. On Palisade Limited and Calligraphy, that's a 12.3" digital instrument display front and center and 10.25" high-resolution split-screen navigation system to your right, with a full-color Heads-up Display projecting critical driving data onto the windshield.

Ventilated front seats and ventilated 2nd-row captain's chairs help extend the special treatment Palisade Limited and Calligraphy passengers enjoy. The Nappa leather trim is buttery-soft – on the new Calligraphy, it extends to a distinctive quilted pattern on the door panels. An expansive dual sunroof bathes the interior in soothing natural light.

Ready to fill the cabin with your favorite music? The available Harman Kardon® premium audio system uses QuantumLogic® Surround to transform Palisade into a multi-channel sound stage. Your music sounds powerful and sparkling, thanks to Clari-Fi™ Music Restoration Technology that enhances digital audio during playback to restore sound qualities lost in compressed streaming playlists or satellite radio.



Driver Talk in-car intercom



2nd-row automatic temperature controls



Heads-up Display



Rear side-window sunshades





*The hands-free smart liftgate will open when your Proximity Key is within 3 feet of the detection area for at least 3 seconds. Radio transmitters and other vehicle smart keys may interfere with normal operation. Standard on Limited, available on SEL. Please consult your Owner's Manual for details. ² Qi wireless charging function is based on smartphone compatibility and/or specific accessory cases.

PALISADE Calligraphy in Light Beige Nappa Leather

Your family's home on the road.

Hyundai imagined a family just like yours when we designed the versatile, comfortable and connected Palisade interior. So whether you're settling into the front, 2nd or 3rd row, you'll instantly feel right at home.

Up front, the legroom is exceptional – even greater than some full-size SUVs. Heated 8-way power-adjustable front seats are available with ventilation and power lumbar support. Palisade's one-touch sliding 2nd row makes it easy to access a 3rd row with available power fold and recline when you want to quickly make room for cargo. Easy-to-fold rear seats create a cavernous cargo space that, together with an available hands-free smart liftgate,¹ opens your weekend to endless possibilities.

The 2nd and 3rd rows both offer dedicated climate control vents and a roof vent diffuser that quietly streams an evenly distributed flow of air to your rear passengers. All of the cabin air is freshened by an available CleanAir Ionizer. Need to get power to your people? Seven USB charging ports and a wireless charging pad² are available on Palisade SEL and standard on Palisade Limited and Calligraphy.

There's a massive amount of storage in the center console and every seating position. Need to make an announcement to your whole crew? A conversation mirror and available Driver Talk in-car intercom make it easy for the captain to speak to 3rd-row passengers from the flight deck. There's even a feature called Rear Seat Quiet Mode that mutes the rear speakers for sleepy passengers.



Versatile cargo space



8-passenger seating



3rd-row power fold and recline buttons



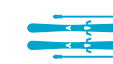
Height-adjustable hands-free smart liftgate



Bikes



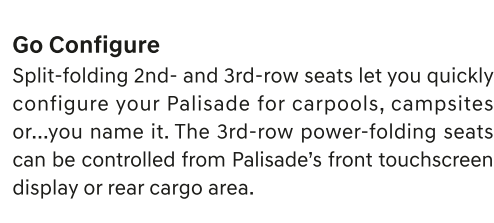
Strollers



Skis



Large Toys



Golf Bags



Tents



Go Configure

Split-folding 2nd- and 3rd-row seats let you quickly configure your Palisade for carpools, campsites or...you name it. The 3rd-row power-folding seats can be controlled from Palisade's front touchscreen display or rear cargo area.

Match Palisade to your mood.

With a feature called Drive Mode Select, Palisade lets you change its personality. Want to feel the performance? Simply turn the Drive Mode knob on the center console to Sport, and your Palisade sharpens its steering and throttle response.

Feel like taking it easy? Select Comfort mode, and your Palisade instantly adjusts so the engine, transmission and other systems favor a smoother response. Maybe you feel like taking it easy on gas? Choose Eco mode, and your Palisade is set up for peak fuel efficiency. Driving on snow-covered roads? The system's Snow mode calibrates AWD traction for wintry driving conditions.¹

Whatever mode you choose, the power you feel pours from a smooth push-button 8-speed electronic transmission and innovative 3.8L GDI V6 engine that generates up to 291 horsepower with an EPA-estimated 26 MPG on the highway.² The HTRAC All Wheel Drive available with all trim levels includes Downhill Brake Control, which helps maintain traction when you're descending an incline without having to press the brake pedal.



Level The Playing Field
The optimized geometry of a multi-link rear suspension helps ensure you're in control through the curves and composed over rough roads. Swap Palisade's stylish 18" alloy wheels for its available 20" wheels, and the rear suspension includes an auto-leveling feature as well.



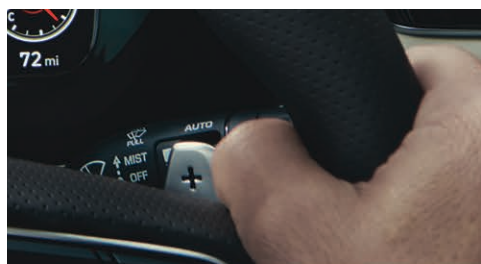
Trailer sway control



Advanced HTRAC All Wheel Drive



Shift-by-Wire push-button gear selection



SHIFTRONIC® paddle shifters



¹Snow Mode requires HTRAC All Wheel Drive. ²EPA estimates with front-wheel drive for comparison only. Mileage may vary. Your actual mileage will vary with options, driving conditions, driving habits and the vehicle's condition.



¹Forward Collision-Avoidance Assist (FCA) with Pedestrian Detection helps detect pedestrians, but not in all conditions. FCA is designed to assist drivers to avoid, or reduce the severity of, collisions with cars that have slowed or stopped in front of them. It is a supplemental assist and does not replace the need for extreme care and attention by the driver. FCA may not stop the vehicle completely and will not avoid all collisions. See Owner's Manual for details. ²Smart Cruise Control (SCC) is not a collision avoidance or warning device. SCC is for highway use only and should not be used in poor weather, heavy or varying traffic, or on winding or slippery roads. The driver remains responsible to slow or stop the vehicle to avoid a collision. SCC initiates a full stop when the traffic ahead stops and reengages if the vehicle ahead moves forward within 3 seconds. See Owner's Manual for details. ³Lane Keeping Assist (LKA) helps to keep the driver from drifting over the lane edge and operates above approximately 44 mph when the lane markings are clearly visible. It will not prevent loss of control. LKA is not a substitute for safe driving. See Owner's Manual for further details. ⁴Blind-Spot Collision-Avoidance Assist (BCA) warns the driver of other cars in the blind spot area and can apply braking to help prevent an unsafe lane change. It senses the rear side territory of the vehicle when traveling over 20 mph. There are limitations to the function, range, detection and clarity of the system. It will not detect all vehicles or objects in the blind spot. BCA may not operate if sensors are obscured in any way. Do not rely exclusively on BCA. BCA is a supplemental system, and it is the driver's responsibility to exercise caution when changing lanes. See Owner's Manual for details. ⁵When the vehicle is parked, Safe Exit Assist (SEA) can alert occupants planning to exit the vehicle when a detected vehicle is approaching from behind. When Child Locks are active, SEA helps prevent the rear doors from opening if a vehicle approaching from behind is detected. All doors must be closed for Safe Exit Assist to operate. Functionality is retained for 10 minutes after the ignition is turned off. Opening the door switches Safe Exit Assist off. See Owner's Manual for details. ⁶Rear Cross-Traffic Collision-Avoidance Assist (RCCA) can alert the driver of a potential hazard by providing an audible warning and applying light braking. RCCA is active when the vehicle is in reverse and operating at low speeds. Never rely exclusively on RCCA. RCCA cannot prevent all collisions and may not provide alerts or braking in all conditions. Always look over your shoulder and use your mirrors to confirm rear clearance. There are limitations to the function, detection, range and clarity of the system. See Owner's Manual for details. ⁷When the vehicle is parked and the engine has been turned off, the Rear Occupant Alert can help alert the driver if the rear door(s) have been opened at any point after the vehicle was unlocked at the beginning of the journey. Upon turning the engine off, Rear Occupant Alert will provide a visual alert on the instrument cluster. Rear Occupant Alert is not a substitute for driver attentiveness. Never leave a child unattended in a vehicle. See Owner's Manual for details. ⁸Blind-Spot View Monitor (BVM) assists the driver in changing lanes by providing a live view of the blind spots on either side of the vehicle and an audible alert if another vehicle is detected. Turn signal must be activated, and other system limitations apply. Do not rely exclusively on BVM. It is the driver's responsibility to be aware of the surroundings and ensure it is clear before changing lanes. See Owner's Manual for details. ⁹Government 5-Star Safety Ratings are part of the National Highway Traffic Safety Administration's New Car Assessment Program (www.safercar.gov). ¹⁰To qualify for 2020 TOP SAFETY PICK, a vehicle must earn good ratings in the driver-side and passenger-side small overlap front, moderate overlap front, side, roof strength and head restraint tests. It also must earn an advanced or superior rating for vehicle-to-vehicle and vehicle-to-pedestrian front crash prevention and an acceptable or good headlight rating.

PALISADE Calligraphy in Moonlight Cloud

Make the safe move.

Nothing's more important to you than the safety of your family. And that's the priority of Palisade, too. With Hyundai SmartSense, Palisade comes equipped with an array of innovative safety technologies that help protect you from every angle – whether you're negotiating frantic freeways, urban jungles or winding ribbons of mountain road.

Forward Collision-Avoidance Assist with Pedestrian Detection,¹ Smart Cruise Control with Stop & Go² and High Beam Assist scan the road ahead. Standard Lane Keeping Assist,³ along with available features like Blind-Spot Collision-Avoidance Assist⁴ and Safe Exit Assist,⁵ help monitor your flanks. Behind you, a rearview camera and available Rear Cross-Traffic Collision-Avoidance Assist⁶ have your back. There's even a feature called Rear Occupant Alert,⁷ which helps detect the presence of rear-seat passengers whenever the driver exits the vehicle.

Palisade's bold character lines are forged with copious amounts of advanced high-strength steel to help maximize passenger protection in a collision. To help prevent collisions from happening, Palisade Limited and Calligraphy feature two more innovations: a Surround View Monitor that helps manage tricky parking maneuvers, and a Blind-Spot View Monitor that helps negotiate lane changes by showing views of either blind spot on Palisade's instrument display after you activate your turn signal.⁸



Safe Exit Assist



Rear Cross-Traffic Collision-Avoidance Assist

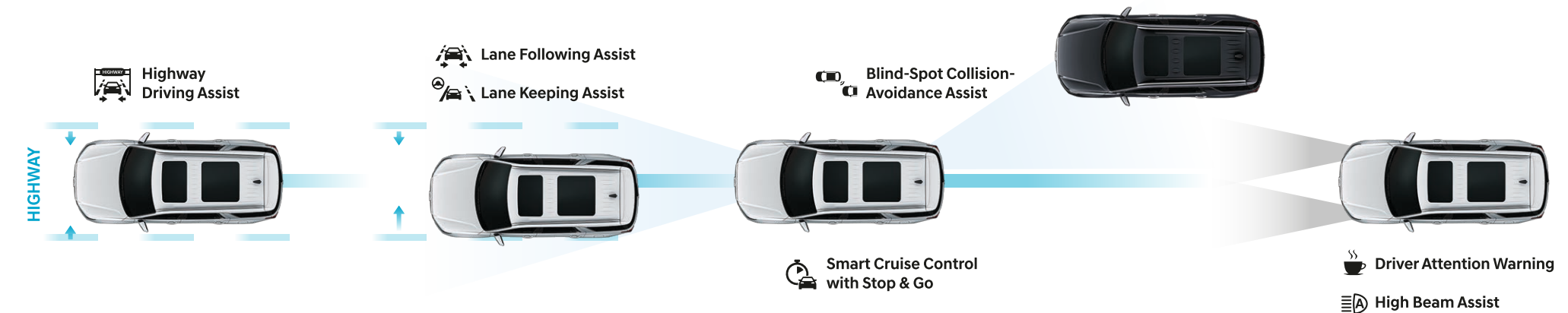


Surround View Monitor



Blind-Spot View Monitor

SmartSense Safety Technologies



Put Palisade at your fingertips. With Blue Link.

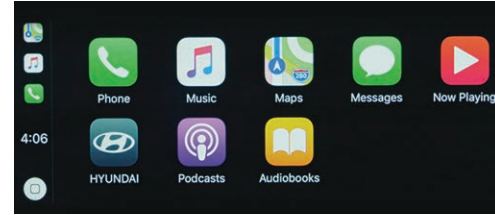
We know how connected you are to your smartphone. So we made sure that connection extends to Hyundai's award-winning Blue Link® connected car features.¹

By downloading the free MyHyundai app, your smartphone becomes a remote control capable of locking or unlocking your Palisade's doors, starting the engine – even choosing a memory seat setting – before you walk out the door.² With your Amazon Echo® or Google Home™ device, you can also use voice commands to start the engine and set the cabin temperature from the comfort of your couch or kitchen.³

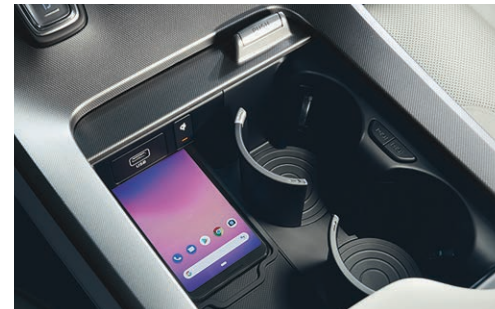
Blue Link Guidance lets you search, download and navigate to addresses and points of interest using voice commands with

Palisade's available navigation system or your smartphone before entering your Hyundai.⁴ More good news – Apple CarPlay® and Android Auto™ come standard on every Palisade model.⁵ So you can use the large touchscreen display or simple voice commands to access maps and navigation, your phone's contact lists, texts, calls, your music library and more.

Then there's Blue Link Connected Care. Complimentary for your first three years, it offers exceptional peace of mind. Wherever you may roam, operators are standing by to provide emergency roadside assistance in the event of an accident where airbags are deployed.⁶ Your Blue Link app can even help law enforcement recover your Palisade if it's ever stolen. Visit HyundaiBlueLink.com for details on the complete list of innovative Blue Link features.



Apple CarPlay



Wireless device charging

¹Not available with Palisade SE. 2021 Palisade vehicles include 3 years of the Blue Link Connected Care, Remote and Guidance (factory-equipped navigation required) packages. All trials require an active Blue Link subscription agreement subject to the Connected Services Terms and Conditions. Three-year term starts from the new vehicle date-of-first-use, is available for new vehicle purchases and leases, and is transferable to subsequent owners subject to the Terms and Conditions. Only use Blue Link and corresponding devices when safe to do so. Cellular and GPS coverage is required. Features, specifications, and fees are subject to change. For more on details and limitations, visit HyundaiUSA.com or your authorized Hyundai dealer. ²Requires active Blue Link subscription with Remote package. Not available on all models. Requires vehicles equipped with push button start. Remote climate control available on properly equipped models with fully automatic temperature control. Remote stop only available when in remote start mode. ³Amazon, Alexa and all related logos and motion marks are trademarks of Amazon.com, Inc. or its affiliates. Google, Google Home and other marks are trademarks of Google Inc. ⁴Requires navigation-equipped vehicle and active Blue Link subscription with Guidance package. ⁵Apple CarPlay works with iPhone 5s, iPhone 5c, iPhone 5 and later models running the latest version of iOS 7 and above. Apple is a registered trademark of Apple Inc. Android Auto works with smartphones running on Android 5.0 Lollipop and higher. Android, Android Auto, Google Play and other marks are trademarks of Google Inc. ⁶Blue Link agents will contact existing emergency service responders.



PALISADE Calligraphy in Moonlight Cloud



Automatic Emergency Assistance

Blue Link Connected Care offers 24/7 SOS Emergency Assistance and Automatic Collision Notification that calls for help if you're in an accident where airbags deploy.



Destination Send-to-Car

Use your smartphone to find restaurants or points of interest that may not be updated on your vehicle's maps, then send the destination to Palisade's navigation system.



Car Finder

Our Car Finder smartphone app feature lets you navigate your way through crowded parking lots back to your Palisade.



On-Demand Diagnostics

Run vehicle diagnostics from your Hyundai's touchscreen, report issues at the press of a button and receive Monthly Vehicle Health Reports or maintenance reminders by email.



Remote Controls

Use your smartphone, home assistant or wearable device to remotely start your Palisade's engine, unlock the doors, set the cabin temperature and more.

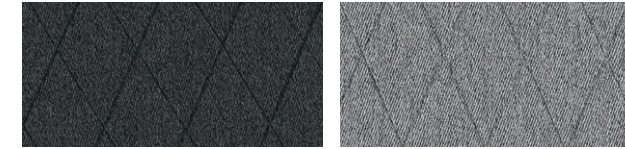


Service Link

Conveniently schedule your vehicle for service from the driver seat of your Palisade or MyHyundai smartphone app.

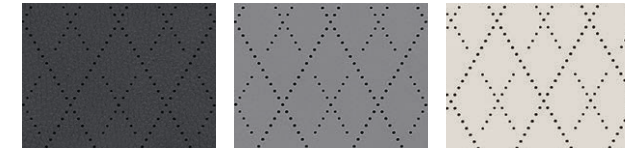


Interior Colors



SE/SEL Black Cloth

SE/SEL Gray Cloth



SEL Premium Pkg Black Leather

SEL Premium Pkg Gray Leather

SEL Premium Pkg Light Beige Leather

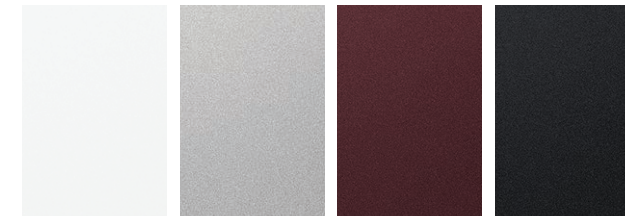


Limited/Calligraphy Black Nappa Leather

Limited/Calligraphy Beige Nappa Leather

Limited/Calligraphy Light Beige Nappa Leather

Exterior Colors

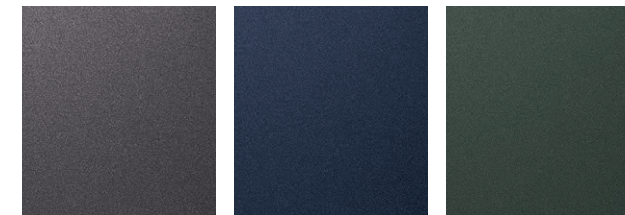


Hyper White

Typhoon Silver*

Sierra Burgundy*

Becketts Black



Steel Graphite*

Moonlight Cloud

Rainforest*

* Late availability on Palisade Calligraphy

PALISADE SE



Popular Features

- Forward Collision-Avoidance Assist with Pedestrian Detection
- Lane Keeping Assist and Lane Following Assist
- Low- and high-beam LED headlights
- 5 USB charge ports – (3) front row and (2) 2nd row
- 8-passenger seating
- Parking Distance Warning – Reverse
- 8" display AM/FM/MP3/HD Radio™ audio system
- Apple CarPlay® and Android Auto™
- 2nd-row manual temperature controls

PALISADE Limited



Popular Features

- Wide dual sunroof with sliding sunshade
- 12.3" full-digital LCD instrument cluster display
- Harman Kardon® premium audio with 12 speakers
- Full-color Heads-up Display
- Premium Nappa leather seating surfaces
- Ventilated front seats and 2nd-row captain's chairs
- Ambient interior lighting (64 colors)
- Surround View Monitor / Blind-Spot View Monitor
- Rain-sensing windshield wipers

Wheels

SE
18" Alloy Wheel



PALISADE SEL



Popular Features

- Proximity Key entry with push button start
- Key fob remote engine starter
- 8-way power driver seat with lumbar support
- Leather-wrapped steering wheel
- Dual automatic temperature control
- Heated front seats
- 7-passenger seating with 2nd-row captain's chairs
- Power tilt-and-slide sunroof
- LED interior lighting

PALISADE Calligraphy



Popular Features

- Exclusive grille and front bumper
- Premium rear accent lighting
- Premium side door garnish
- Side mirror approach lights (puddle lamps)
- Perforated leather steering wheel
- Microfiber suede headliner
- Quilted leather door panel inserts
- Premium cargo sill plate
- Exclusive 20" alloy wheels

SEL Standard
18" Alloy Wheel



SEL Packages/Limited
20" Alloy Wheel



Calligraphy
20" Alloy Wheel



SEL Convenience Package	
Auto-leveling rear suspension	2nd-row side-window sunshades
20" alloy wheels	Wireless device charging
Parking Distance Warning – Forward	Dual 3rd-row USB charge ports
Hands-free smart liftgate with auto open	115-volt power outlet
7" color LCD instrument cluster display	LED taillights
Ultrasonic Rear Occupant Alert	Acoustic front side glass

SEL Premium Package [requires Convenience Package]	
Leather seating surfaces	Heated 2nd-row seats
Premium dashboard and door armrests	Heated steering wheel
8-way power front passenger seat	3rd-row power-folding/reclining seats
10.25" touchscreen navigation system	Blue Link® Connected Car System
Highway Driving Assist	SiriusXM Satellite Radio
Driver Talk in-car intercom	Integrated Memory System

SEL 8-Passenger Seating Option [requires Premium Package]	
2nd-row bench seating (replaces captain's chairs)	

HTRAC All Wheel Drive Option	
HTRAC All Wheel Drive	Downhill Brake Control
AWD Lock	Snow Mode

3.8L GDI V6 Engine
hp 291

lb-ft 262

EPA MPG Estimates (City/Highway/Combined)
19/26/22 **19/24/21**
FWD 8-speed A/T AWD 8-speed A/T

EPA estimates for comparison only. Mileage may vary. Your actual mileage will vary with options, driving conditions, driving habits and the vehicle's condition.

PALISADE

	SE	SEL	Ltd	Calli
Power & Handling				
291 hp / 262 lb-ft, 3.8L Atkinson Cycle GDI V6 engine	●	●	●	●
8-speed automatic transmission with SHIFTRONIC® manual-shift mode	●	●	●	●
Paddle shifters and Shift-by-Wire push-button gear selector	●	●	●	●
Drive Mode Select	●	●	●	●
HTRAC All Wheel Drive with AWD lock and Downhill Brake Control	○	○	○	○
Electronic Parking Brake with Automatic Vehicle Hold	●	●	●	●
Multi-link independent rear suspension	●	●	●	●
Auto-leveling rear suspension	–	●	●	●
Idle Stop & Go	●	●	●	●
Trailer pre-wiring (7-pin) with heavy-duty transmission oil cooler	●	●	●	●
Trailer sway control	●	●	●	●

Exterior Features				
Exclusive grille and front bumper	–	–	–	●
LED Daytime Running Lights / Automatic on/off projector headlights	●	●	●	●
Low- and high-beam LED headlights	●	●	●	●
Premium rear accent lighting	–	–	–	●
LED taillights	–	●	●	●
Bodycolor heated power side mirrors	●	●	●	●
Side mirrors with LED turn signal indicators	–	●	●	●
Side mirror approach lights	–	–	–	●
Satin chrome exterior door handles	–	●	●	●
Acoustic-laminated windshield, solar front glass and privacy rear glass	●	●	●	●
Rain-sensing windshield wipers	–	–	●	●
Roof side rails	–	●	●	●
Hands-free smart liftgate with auto open and adjustable height setting	–	●	●	●

Interior Features				
Proximity Key entry with push button start and key fob remote engine start	–	●	●	●
3.5" LCD instrument cluster display	●	●	–	–
7" color LCD instrument cluster display	–	●	–	–
12.3" full-digital instrument cluster display with selectable viewing modes	–	–	●	●
Full-color Heads-up Display	–	–	●	●
Tilt-and-telescopic haptic steering wheel	●	●	●	●
Leather-wrapped steering wheel	–	●	●	–
Perforated leather-wrapped steering wheel	–	–	–	●
8-passenger seating (2 + 3 + 3)	●	○	–	–
7-passenger seating with 2nd-row captain's chairs and heated front seats	–	●	●	●
One-touch 2nd-row sliding seat for 3rd-row access	●	●	●	●
Dual automatic temperature control with CleanAir Ionizer	–	●	●	●
Diffused-air roof vents (2nd and 3rd row)	●	●	●	●
8-way power driver seat with 2-way lumbar support	–	●	–	–
8-way power driver seat with extendable thigh support and 4-way lumbar support	–	–	●	●
Leather seating surfaces and 8-way power front passenger seat	–	●	●	●
3rd-row power-folding/reclining seats	–	●	●	●
Integrated Memory System for driver seat and side mirrors	–	●	●	●
Microfiber suede headliner and quilted leather door panel inserts	–	–	–	●
Heated 2nd-row seats and heated steering wheel	–	●	●	●
Premium Nappa leather seating surfaces	–	–	●	●
Ventilated front seats and 2nd-row captain's chairs	–	–	●	●

PALISADE

	SE	SEL	Ltd	Calli
Interior Features				
Power tilt-and-slide sunroof	–	●	–	–
Wide dual sunroof with sliding sunshade	–	–	●	●
Ambient LED interior lighting (adjustable - 64 colors)	–	–	●	●
LED interior lighting	–	●	●	●
Rear side-window sunshades	–	●	●	●
Rear View Monitor with Parking Guidance	●	●	●	●
Smart Cruise Control with Stop & Go	●	●	●	●

Advanced Safety				
Forward Collision-Avoidance Assist with Pedestrian Detection	●	●	●	●
Lane Keeping Assist and Lane Following Assist	●	●	●	●
Driver Attention Warning	●	●	●	●
Rear Occupant Alert	●	●	–	–
Ultrasonic Rear Occupant Alert	–	●	●	●
Blind-Spot Collision-Avoidance Assist	–	●	●	●
Rear Cross-Traffic Collision-Avoidance Assist	–	●	●	●
Safe Exit Assist	–	●	●	●
Highway Driving Assist	–	●	●	●
Parking Distance Warning – Reverse	●	●	●	●
Parking Distance Warning – Forward	–	●	●	●
Blind-Spot View Monitor and Surround View Monitor	–	–	●	●

Audio & Connected Car Technology				
8" display AM/FM/MP3/HD Radio™ audio system	●	●	–	–
10.25" high-resolution touchscreen navigation system	–	●	●	●
Harman Kardon® 12-speaker premium audio with QuantumLogic® Surround and Clari-Fi™ Music Restoration Technology	–	–	●	●
SiriusXM Satellite Radio	–	●	●	●
Bluetooth® hands-free phone system with wireless audio streaming	●	●	●	●
Android Auto™ and Apple CarPlay®	●	●	●	●
Wireless smartphone connectivity (N/A with SEL Premium Package)	●	●	–	–
Blue Link® Connected Car System (3 years complimentary)	–	●	●	●
Driver Talk in-car intercom	–	●	●	●
Rear Seat Quiet Mode	●	●	●	●
Three front-row and dual 2nd-row USB charge ports	●	●	●	●
Dual 3rd-row USB charge ports and 115-volt power outlet	–	●	●	●
Wireless device charging	–	●	●	●
Multiple Bluetooth® device connection (up to 2 devices)	●	●	●	●

● Standard ○ Optional ● Convenience Package ● Premium Package – Not Available
Ltd=Limited / Calli=Calligraphy

Exterior / Interior Dimensions PALISADE

Wheelbase	114.2 in
Overall Length / Overall Width / Overall Height	196.1 / 77.8 / 68.9 in
Headroom – front (w/sunroof) / 2nd row (w/sunroof) / 3rd row (w/sunroof)	40.7 (39.3) / 40.1 (38.8) / 37.8 (37.2) in
Legroom – front / 2nd row / 3rd row	44.1 / 42.4 / 31.4 in
Shoulder Room - front / 2nd row / 3rd row	61.2 / 60.8 / 55.2 in
Passenger Volume / Total Interior Volume	155.3 / 173.3 cu ft
Cargo Capacity – behind front seats / 2nd row / 3rd row	86.4 / 45.8 / 18.0 cu ft



Hyundai Hope On Wheels®

Helping Kids Fight Cancer Since 1998



Hope makes every Hyundai better.

Each time we sell a Hyundai, a portion goes to Hyundai Hope On Wheels® to help find a cure for childhood cancer. Over the last 22 years, Hyundai Hope On Wheels has donated more than \$172 million. Hope is our greatest feature. And it comes standard on every Hyundai. For more information, please visit HyundaiHopeOnWheels.org.



America's Best Warranty

POWERTRAIN LIMITED WARRANTY

10 YEARS 100,000 MILES

NEW VEHICLE LIMITED WARRANTY

5 YEARS 60,000 MILES

ANTI-PERFORATION WARRANTY

7 YEARS UNLIMITED MILES

24/7 ROADSIDE ASSISTANCE

5 YEARS UNLIMITED MILES



Complimentary maintenance includes Hyundai-approved oil and oil filter changes (except for electric vehicles and fuel cell electric vehicles) plus tire rotation at normal factory-scheduled intervals for 3 years or 36,000 miles, whichever comes first. This offer valid only for new 2020-2021 Hyundai models purchased or leased on or after February 1, 2020. See your Hyundai dealer for further details and limitations.



Our commitment to Hyundai owners does not end with the transfer of keys. Wherever the road takes you, we've got your back with Hyundai Assurance, an umbrella of services and benefits that includes America's Best Warranty, 24/7 Roadside Assistance, innovative safety and car care features...and more.

See dealer for LIMITED WARRANTY details. Fuel economy estimated by EPA for comparison only. Mileage may vary. While the information contained in this brochure was correct at the time of printing, specifications and equipment can change. Feature comparisons based on competitor information available at the time of printing. No warranty or guarantee is being extended in this brochure, and Hyundai reserves the right to change product specifications and equipment at any time without incurring obligations. Some vehicles are shown with optional equipment. Specifications apply to U.S. vehicles only. Please contact your Hyundai dealer for current vehicle specifications. As part of Hyundai's commitment to a responsible environment, this brochure was printed using paper certified by the Forest Stewardship Council®. FSC® certification helps ensure that the highest social and environmental standards are met in the making of the paper we use, contributing to conservation, responsible management and community-level benefits for people near the forests.

