

## NISSAN INTELLIGENT MOBILITY™

Nissan Intelligent Mobility guides everything we do. We're using new technologies to transform cars from mere driving machines into assistants. Together the journey is more confident, connected, and exciting. Whether it's cars that assist in the driving task, or highways that charge your EV as you go along, it's all in the very near future. And it's a future already taking shape in the Nissan you drive today.



Innovation  
that excites

# 2020 ROGUE®

### SEE ROGUE® COME TO LIFE

Go to [NissanUSA.com](http://NissanUSA.com) and find an interactive brochure for Rogue and every Nissan model in the lineup. Available on desktop, smartphone, or tablet, it's the full product story - including demos, videos, and complete info on trims, colors, and accessories.



<sup>1</sup>Intelligent All-Wheel Drive cannot prevent collisions or provide enhanced traction in all conditions. Always monitor traffic and weather conditions. <sup>2</sup>Cargo shown for display purposes only. Cargo and load capacity limited by weight and distribution. Always secure cargo. Heavy loading of the vehicle with cargo, especially on the roof, will affect the handling and stability of the vehicle. <sup>3</sup>Availability of features vary by vehicle model year, model, trim level, packaging, and options. <sup>4</sup>Automatic Emergency Braking with Pedestrian Detection cannot prevent all collisions and may not provide warning or braking in all conditions. Driver should monitor traffic conditions and brake as needed to prevent collisions. See Owner's Manual for safety information. <sup>5</sup>Available feature. <sup>6</sup>Rear Automatic Braking cannot prevent all collisions and may not provide warning or braking in all conditions. Driver should monitor traffic conditions and brake as needed to prevent collisions. See Owner's Manual for safety information. <sup>7</sup>Rear Cross Traffic Alert may not detect all vehicles. See Owner's Manual for safety information. <sup>8</sup>Blind Spot Warning cannot prevent collisions and may not detect every object or warn in all situations. Driver should always turn and look before changing lanes. See Owner's Manual for safety information. <sup>9</sup>Lane Departure Warning operates only when lane markings are able to be detected. See Owner's Manual for safety information. <sup>10</sup>ProPILOT Assist cannot prevent collisions. It is the driver's responsibility to be in control of the vehicle at all times. Always monitor traffic conditions and keep both hands on the steering wheel. System operates only when lane markings are detected. Does not function in all weather, traffic, and road conditions. System has limited control capability and the driver may need to steer, brake, or accelerate at any time to maintain safety. See Owner's Manual for safety information. <sup>11</sup>Extra cost option. <sup>12</sup>RearView Monitor may not detect every object and does not eliminate blind spots or warn of moving objects. See Owner's Manual for safety information. <sup>13</sup>Intelligent Trace Control cannot prevent collisions or loss of control. Driver should remain in control of vehicle at all times. See Owner's Manual for safety information. <sup>14</sup>See Owner's Manual for safety information. <sup>15</sup>Driving is serious business and requires your full attention. If you have to use the feature while driving, exercise extreme caution at all times so full attention may be given to vehicle operation. <sup>16</sup>Information displayed is dependent on how vehicle is equipped. <sup>17</sup>Available services/features may be shown. Compatible connected device may be required. Only use services/features and device when safe and legal to do so. Subject to GPS and wireless network availability and connection, and system/technology limitations. Text rates/data usage/subscription may apply. Some services/features provided by companies not within Nissan or its partners' or agents' control and may be discontinued at any time. For more information, see dealer, Owner's Manual, or [NissanUSA.com/connect/important-information](http://NissanUSA.com/connect/important-information). <sup>18</sup>Use Hands Free Text Messaging when parked in a safe location. If you must use while driving, monitor traffic conditions and keep both hands on the steering wheel to prevent collisions. Compatible device required. Message and data rates may apply. <sup>19</sup>Driving is serious business and requires your full attention. If you have to use the connected device while driving, exercise extreme caution at all times so full attention may be given to vehicle operation. <sup>20</sup>Air bags are only a supplemental restraint system. Always wear your seat belt. Rear-facing child restraints should not be placed in the front-passenger's seat. All children 12 and under should ride in the rear seat properly secured in child restraints, booster seats, or seat belts according to their size. Air bags will only inflate in certain accidents. See Owner's Manual for safety information. <sup>21</sup>Tire Pressure Monitoring System is not a substitute for regular tire pressure checks. See Owner's Manual for safety information. <sup>22</sup>Vehicle must be on for the Easy-Fill Tire Alert to operate. <sup>23</sup>Sonar System may not detect every object. Driver should always check surroundings before driving. See Owner's Manual for safety information. <sup>24</sup>State laws may apply. Review before using. <sup>25</sup>Intelligent Around View® Monitor cannot eliminate blind spots and may not detect every object. Driver should always turn and check surroundings before driving. See Owner's Manual for safety information. <sup>26</sup>Never program while driving. GPS mapping may not be detailed in all areas or reflect current road status. <sup>27</sup>Intelligent Cruise Control uses limited braking and is not a collision avoidance or warning system. Driver should monitor traffic conditions and brake as needed to prevent collisions. See Owner's Manual for safety information. <sup>28</sup>Genuine Nissan Accessories are covered by Nissan's Limited Warranty on Genuine Nissan Replacement Parts, Genuine NISMO® S-Tune Parts, and Genuine Nissan Accessories for the longer of 12 months/12,000 miles (whichever occurs first) or the remaining period under the 3-year/36,000-mile (whichever occurs first) Nissan New Vehicle Limited Warranty. Terms and conditions apply. See dealer, Warranty Information Booklet, or [parts.NissanUSA.com](http://parts.NissanUSA.com) for details. <sup>29</sup>Not a genuine Nissan part/accessory. Not warranted by Nissan. Refer to product manufacturer for warranty details. Nissan Limited Warranty does not cover damages or failures to the vehicle caused by improper installation or alterations of any Nissan approved accessory or component. Contact your dealer/retailer for details. <sup>30</sup>Please follow Towing Guidelines. Towing capability varies by configuration. See Nissan Towing Guide and Owner's Manual for additional information. <sup>31</sup>Brake Assist cannot prevent all collisions and may not provide warning or braking in all conditions. Driver should monitor traffic conditions and brake as needed to prevent collisions. See Owner's Manual for safety information. <sup>32</sup>Vehicle Dynamic Control cannot prevent collisions due to abrupt steering, carelessness, or dangerous driving techniques. It should remain on when driving, except when freeing the vehicle from mud or snow. See Owner's Manual for safety information. <sup>33</sup>2019 EPA Fuel Economy Estimates for 2020 Rogue®: 26 City MPG / 33 Highway MPG / 29 Combined MPG for 2020 Rogue FWD (S, SV, and SL trims); 25 City MPG / 32 Highway MPG / 27 Combined MPG for 2020 Rogue AWD (S, SV, and SL trims). Actual mileage may vary with driving conditions - use for comparison only. <sup>34</sup>For a period of 36 months/36,000 miles from the date the vehicle is delivered to the first retail buyer or otherwise put into use, whichever is earlier. Android Auto™ is a trademark of Google LLC. Apple CarPlay® is registered a trademark of Apple, Inc. Bluetooth® is a registered trademark of Bluetooth SIG, Inc. Bose® is a registered trademark of The Bose Corporation. Facebook® is a registered trademark of Facebook, Inc. HomeLink® is a registered trademark of Gentex Corporation. The Sirius®, XM®, and SiriusXM® names and all related marks and logos are trademarks of Sirius XM Radio Inc. All other trademarks are the property of their respective owners. Twitter® is a registered trademark of Twitter, Inc. Yakima® is a registered trademark of Yakima Products, Inc. YouTube® is a registered trademark of Google LLC. This brochure is intended for general descriptive and informational purposes only. It is subject to change and does not constitute an offer, representation or warranty (express or implied) by Nissan North America, Inc. Interested parties should confirm the accuracy of any information in this brochure as it relates to a vehicle directly with Nissan North America, Inc., before relying on it to make a purchase decision. Nissan North America, Inc., reserves the right to make changes, at any time, without prior notice, in prices, colors, materials, equipment, specifications, and models and to discontinue models or equipment. Due to continuous product development and other pre- and post-production factors, actual vehicle, materials and specifications may vary from this brochure. Some vehicles shown with optional equipment. See the actual vehicle for complete accuracy. Availability and delivery times for particular models or equipment may vary. Specifications, options and accessories may differ in Hawaii, U.S. territories and other countries. For additional information on availability, options or accessories, see your Nissan dealer or contact Nissan North America, Inc. At [NissanUSA.com](http://NissanUSA.com), you'll find virtual product demonstrations, a way to "build your own Nissan," a dealer locator, and more information about key Nissan support services. Or if you'd prefer, call 1-800-NISSAN-3 for answers to specific questions about Rogue® or any other Nissan vehicle. The Nissan names, logos, product names, feature names, and slogans are trademarks owned by or licensed to Nissan Motor Co. Ltd. and/or its North American subsidiaries. Other trademarks and trade names are those of their respective owners. **Always wear your seat belt, and please drive responsibly.** ©2019 Nissan North America, Inc. '20 Rogue®. 201099-N-5/19-100K-CGI







There's capability. Then there's Nissan Rogue® capability. What's the difference? Think driver assistance that can step in when you need it and available Intelligent All-Wheel Drive that adapts to a rainy commute or weekend ski trip.<sup>1</sup> You can load groceries in a snap and stack tricky cargo with an adjustable set of shelves and dividers, or stash valuables out of sight.<sup>2</sup> This is tech for everyday adventure. This is tech that moves.



## NISSAN SAFETY SHIELD® 360

Nissan Intelligent Mobility is changing how you move forever with technology that makes you feel more connected, confident, and excited. As part of Nissan Intelligent Mobility, Safety Shield 360 includes features that help you see more, sense more, and can give you an assist when you need it. The following features are standard on Rogue SV and above.<sup>3</sup>

Automatic Emergency Braking with Pedestrian Detection<sup>4</sup>

Rear Automatic Braking<sup>5, 6</sup>

Rear Cross Traffic Alert<sup>7</sup>

Blind Spot Warning<sup>8</sup>

Lane Departure Warning<sup>9</sup>

High Beam Assist



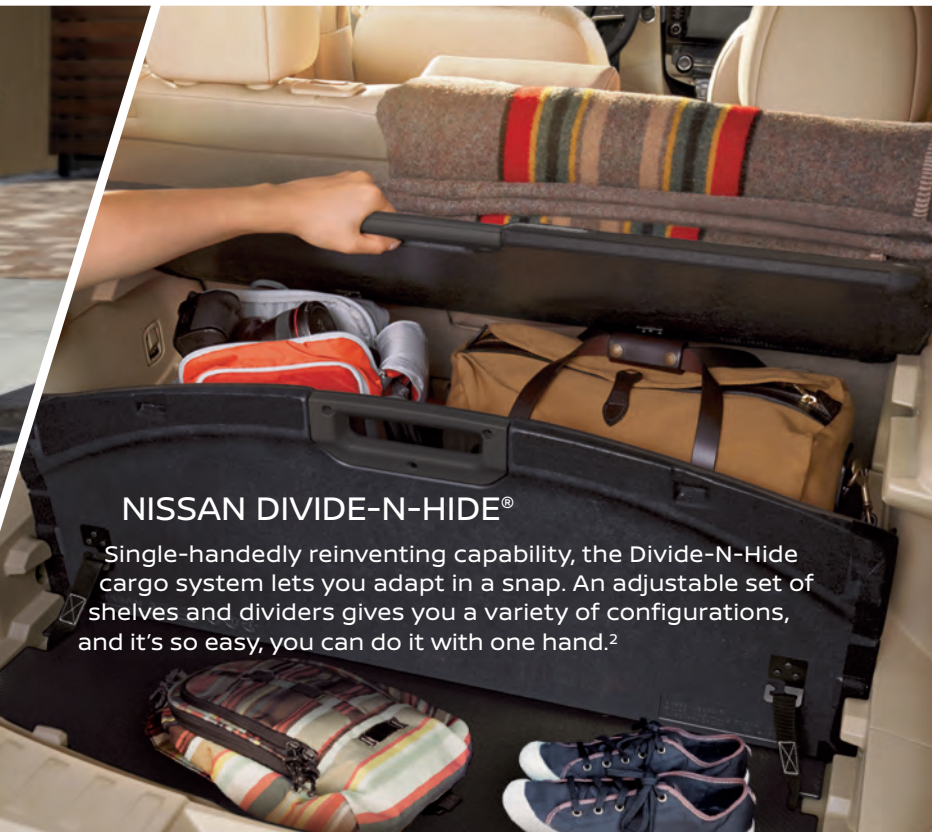
## NISSAN ProPILOT ASSIST

Stress less and enjoy the drive even more. With the groundbreaking ProPILOT Assist, your Rogue takes care of the little things - like helping keep you centered in your lane, and following the car ahead at a preset distance. It can even bring your Rogue to a full stop based on the traffic flow, and can bring you back up to speed when traffic starts moving again.<sup>10</sup>



## MOTION ACTIVATED LIFTGATE

Arms full? Just kick under the rear bumper to open the available Motion Activated Liftgate, without reaching for a key or juggling whatever you're carrying.<sup>2</sup>

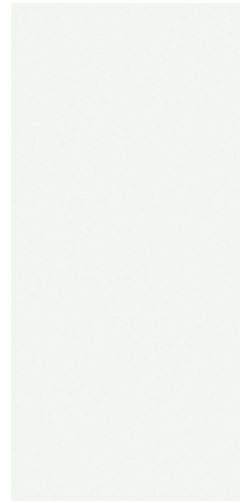


## NISSAN DIVIDE-N-HIDE®

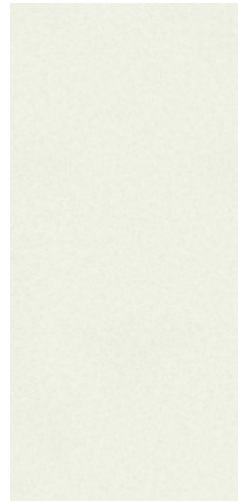
Single-handedly reinventing capability, the Divide-N-Hide cargo system lets you adapt in a snap. An adjustable set of shelves and dividers gives you a variety of configurations, and it's so easy, you can do it with one hand.<sup>2</sup>



CHOOSE YOUR COLOR



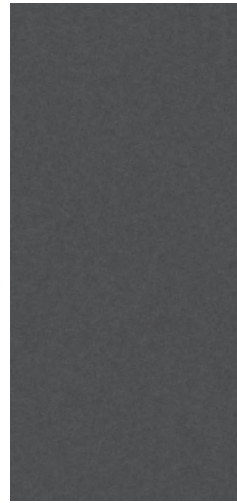
Glacier White



Pearl White TriCoat<sup>11</sup>



Brilliant Silver Metallic

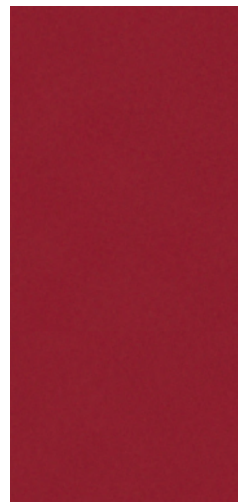


Gun Metallic



Monarch Orange Metallic<sup>11</sup>

	S	SV	SL
CHARCOAL CLOTH	<input checked="" type="checkbox"/>	<input checked="" type="checkbox"/>	
ALMOND CLOTH		<input checked="" type="checkbox"/>	
CHARCOAL LEATHER			<input checked="" type="checkbox"/>
ALMOND LEATHER			<input checked="" type="checkbox"/>



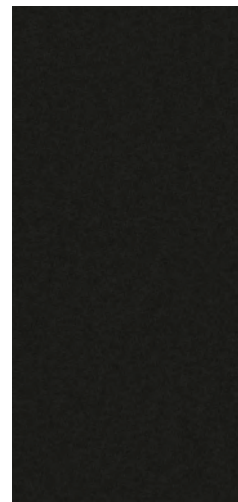
Scarlet Ember Tintcoat<sup>11</sup>



Caspian Blue Metallic



Midnight Pine Metallic



Magnetic Black Pearl

Standard

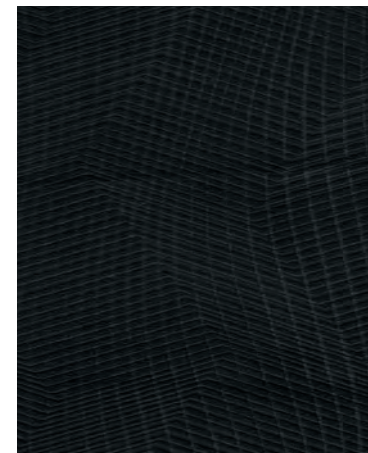
Nissan has taken care to ensure that the color swatches presented here are the closest possible representations of actual vehicle colors. Swatches may vary slightly due to the printing process and whether viewed in daylight, fluorescent or incandescent light. Please see the actual colors at your dealer.

	S	SV	SL
CHARCOAL CLOTH		<input checked="" type="checkbox"/>	
ALMOND CLOTH		<input checked="" type="checkbox"/>	
CHARCOAL LEATHER			<input checked="" type="checkbox"/>
ALMOND LEATHER			<input checked="" type="checkbox"/>

CHOOSE YOUR INTERIOR



Rogue<sup>®</sup> SL shown in Almond Leather with optional equipment.



Charcoal Cloth  
S|SV



Almond Cloth  
SV



Charcoal Leather  
SL



Almond Leather  
SL



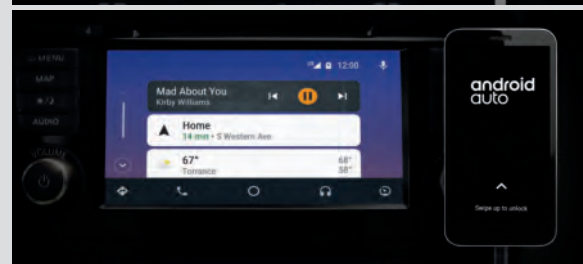
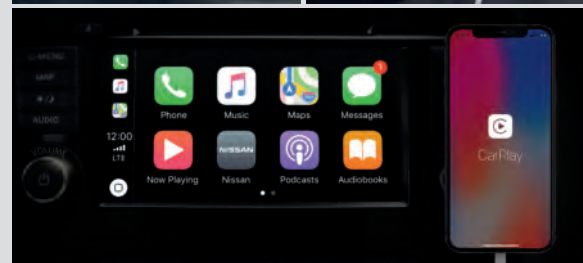
## CHOOSE YOUR TRIM LEVEL

**S**

- 2.5-liter DOHC 16-valve 4-cylinder engine
- Eco Mode
- Xtronic CVT® (Continuously Variable Transmission) with Sport Mode Shifter
- Available Intelligent All-Wheel Drive<sup>1</sup>
- Automatic Emergency Braking with Pedestrian Detection<sup>4</sup>
- Lane Departure Warning<sup>9</sup>
- Blind Spot Warning<sup>8</sup>
- Rear Cross Traffic Alert<sup>7</sup>
- RearView Monitor<sup>12</sup>
- Active Ride Control
- Intelligent Trace Control<sup>13</sup>
- Intelligent Engine Brake
- Hill start assist
- High Beam Assist
- 17" Steel wheels with wheel covers
- LED Daytime Running Lights
- Halogen Headlights
- Intelligent Auto Headlights
- Power outside mirrors
- Rear Door Alert<sup>14</sup>
- Sun visors with illuminated vanity mirrors
- Four cargo tie-down hooks<sup>2</sup>
- Divide-N-Hide® Cargo System<sup>2</sup>
- EZ FLEX® Seating System with 2nd-row split folding/sliding/reclining seat with pass-through
- Cloth seat trim
- Advanced Drive-Assist® Display<sup>15, 16</sup>
- NissanConnect® 7" touch-screen display<sup>17</sup>
- Apple CarPlay<sup>®17</sup>
- Android Auto<sup>™17</sup>
- Hands-free Text Messaging Assistant<sup>18</sup>
- Bluetooth® Hands-free Phone System<sup>17</sup>
- Bluetooth® streaming audio<sup>17</sup>
- Two USB ports<sup>19</sup>
- SiriusXM® Radio<sup>17</sup>
- Nissan Advanced Air Bag System<sup>20</sup>
- Tire Pressure Monitoring System (TPMS) with individual tire pressure display and Easy-Fill Tire Alert<sup>21, 22</sup>

### AVAILABLE PACKAGE:

- Special Edition Package



### SV INCLUDES S EQUIPMENT PLUS:

- Rear Automatic Braking<sup>6</sup>
- Rear Sonar System<sup>23</sup>
- 17" Aluminum-alloy wheels
- Power heated outside mirrors with LED turn signal indicators
- Roof rails<sup>2</sup>
- Motion Activated Liftgate
- Rear privacy glass
- Chrome interior and exterior door handles
- Dual Zone Automatic Temperature Control
- Nissan Intelligent Key® with Push Button Ignition
- Remote Engine Start System with Intelligent Climate Control<sup>24</sup>
- 8-way power driver's seat with 2-way lumbar support
- Quick Comfort® heated front seats
- Leather-wrapped steering wheel
- Leather-wrapped shift knob
- AM/FM/CD audio system with six speakers

### AVAILABLE PACKAGES:

- Premium Package
- Sun and Sound Touring Package



### SL INCLUDES SV EQUIPMENT PLUS:

- ProPILOT Assist<sup>10</sup>
- Intelligent Around View® Monitor<sup>25</sup>
- 19" Aluminum-alloy wheels
- Fog lights
- HomeLink® Universal Transceiver
- Auto-dimming inside rearview mirror
- Electronic parking brake
- Memory System – driver's seat and outside mirrors
- 4-way power front-passenger's seat
- Leather-appointed seats
- Heated leather-wrapped steering wheel
- Chrome Body Side Molding
- Nissan Door to Door Navigation with Premium Traffic<sup>26</sup>
- SiriusXM® Traffic and Travel Link<sup>®17</sup>
- NissanConnect® Services powered by SiriusXM® with complimentary trial access to 3-year Select and 6-month Premium Plus packages<sup>17</sup>
- Nissan Voice Recognition for navigation and audio<sup>26</sup>
- Bose® Premium Audio System with 9 speakers, including dual woofers

### AVAILABLE PACKAGE:

- Premium Package





CHOOSE YOUR PACKAGE



**SPECIAL EDITION PACKAGE** | S

- 17" Aluminum-alloy wheels
- Power heated outside mirrors with LED turn signal indicators
- Roof rails<sup>2</sup>
- Rear privacy glass

- Chrome interior and exterior door handles
- Quick Comfort<sup>®</sup> heated front seats
- Leather-wrapped steering wheel
- Leather-wrapped shift knob
- Special Edition exterior badging



**SUN AND SOUND TOURING PACKAGE** | SV

- Includes SV Premium Package contents plus:
- Dual Panel Panoramic Moonroof
  - Bose<sup>®</sup> Premium Audio System with 9 speakers, including dual woofers



**PREMIUM PACKAGE** | SV

- 18" Aluminum-alloy wheels
- Nissan Door to Door Navigation with Premium Traffic<sup>26</sup>
- Nissan Voice Recognition for navigation and audio<sup>26</sup>

- SiriusXM<sup>®</sup> Traffic and Travel Link<sup>®17</sup>
- Intelligent Cruise Control<sup>27</sup>
- ProPILOT Assist<sup>10</sup>
- Heated leather-wrapped steering wheel

- Memory System – driver's seat and outside mirrors
- Intelligent Around View<sup>®</sup> Monitor<sup>25</sup>
- Electronic parking brake



**PREMIUM PACKAGE** | SL

- Dual Panel Panoramic Moonroof
- LED headlights



CHOOSE YOUR ACCESSORIES



A



B



C



D



E



F



G



H

Every Genuine Nissan Accessory is custom-fit, custom-designed and durability-tested. Each one is backed by Nissan's 3-year/36,000-mile (whichever occurs first) limited warranty (if installed by dealer at the time of purchase), and can be financed when installed by dealer at time of purchase.<sup>28</sup>

- A. Interior Accent Lighting**  
Add a warm glow to the mood.
- B. Carpeted Cargo Area Protector and Cargo Organizer Blocks/Stabilizers<sup>2</sup>**  
Preserve and help protect your cargo, while keeping items in place and organized.
- C. Illuminated Kick Plates**  
Step inside and light 'em up.
- D. Chrome Rear Bumper Protector**  
Stylish and protective. What more could you want?
- E. Clear Door Edge Protectors**  
Keep the edge of your doors looking like new.
- F. Impact Sensor**  
Keep your Rogue alarmed, so you don't have to be.
- G. Yakima® LiteRider 2 Bike Rack<sup>2, 29</sup>**  
Bring a bike or two without impeding access to the cargo area.
- H. All-Season Floor Mats**  
Neither rain, sleet, nor snow will muck up your Rogue.

Additional Accessories:

- Tow Hitch Receiver, Class 1<sup>30</sup>
- Clear Hood Protector
- Frameless Auto-dimming Rearview Mirror with Universal Remote
- Clear Rear Bumper Protector
- Frameless Prizm Rearview Mirror with Universal Remote
- Rear Cargo Cover<sup>2</sup>
- Dual USB Rear Charging Ports<sup>19</sup>
- Carpeted Floor Mats
- Tablet Holder
- All-Season Cargo Area Protector<sup>2</sup>
- Child Seat Cover with Storage
- And More

**GENUINE NISSAN ACCESSORIES**  
TURN BRAND-NEW INTO ALL YOU

For more information and to shop online for Rogue® Genuine Nissan Accessories, go to [bit.ly/20rogue-estore](http://bit.ly/20rogue-estore)



To see Genuine Nissan Accessories in action, go to [bit.ly/20rogue-gna](http://bit.ly/20rogue-gna)

Nissan Rogue® SV with Sun and Sound Touring Package shown in Pearl White TriCoat with Exterior Ground Lighting, Fog Lights, Splash Guards, Moonroof Wind Deflector, and Roof Rail Crossbars.<sup>2</sup>



## SPECIFICATIONS

Engine	S	SV	SL
2.5-liter DOHC 16-valve 4-cylinder	■	■	■
— Horsepower – 170 hp @ 6,000 rpm			
— Torque – 175 lb-ft @ 4,400 rpm			
Continuously Variable Valve Timing Control System (CVTCS) on intake and exhaust valves	■	■	■
Nissan Direct Ignition System with double platinum-tipped spark plugs	■	■	■
Eco Mode	■	■	■

Drivetrain	S	SV	SL
Front-Wheel Drive (FWD)	■	■	■
Intelligent All-Wheel Drive (AWD) <sup>1</sup>	□	□	□
Xtronic CVT® (Continuously Variable Transmission) with Sport Mode Shifter	■	■	■

Brakes	S	SV	SL
4-wheel vented disc brakes	■	■	■
4-wheel Anti-lock Braking System (ABS)	■	■	■
Electronic Brake force Distribution (EBD)	■	■	■
Brake Assist <sup>31</sup>	■	■	■
Electronic parking brake		P1, ST	■

Suspension/Chassis Bracing/Steering	S	SV	SL
Independent strut front suspension	■	■	■
Independent multi-link rear suspension	■	■	■
Front and rear stabilizer bars	■	■	■
Vehicle-speed-sensitive electric power steering	■	■	■

Driver Assistance Technologies	S	SV	SL
Cruise control	■	■	
Intelligent Cruise Control <sup>27</sup>		P1, ST	■
ProPILOT Assist <sup>10</sup>		P1, ST	■
Automatic Emergency Braking with Pedestrian Detection <sup>4</sup>	■	■	■
Lane Departure Warning <sup>9</sup>	■	■	■
Blind Spot Warning <sup>8</sup>	■	■	■
Rear Cross Traffic Alert <sup>7</sup>	■	■	■
RearView Monitor <sup>12</sup>	■	■	
Intelligent Around View® Monitor <sup>25</sup>		P1, ST	■
Rear Sonar System <sup>23</sup>		■	■
Rear Automatic Braking <sup>6</sup>		■	■
Vehicle Dynamic Control (VDC) <sup>32</sup> with Traction Control System (TCS)	■	■	■
Active Ride Control	■	■	■
Intelligent Trace Control <sup>13</sup>	■	■	■
Intelligent Engine Brake	■	■	■
Hill start assist	■	■	■

Exterior Features	S	SV	SL
High Beam Assist	■	■	■
17" x 7.0" steel wheels with wheel covers	■		
17" x 7.0" aluminum-alloy wheels	SE	■	
18" x 7.0" aluminum-alloy wheels		P1, ST	
19" x 7.0" aluminum-alloy wheels			■
P225/65R17 all-season tires	■	■	
P225/60R18 all-season tires		P1, ST	
P225/55R19 all-season tires			■

Exterior Features	S	SV	SL
Halogen headlights	■	■	■
LED Daytime Running Lights	■	■	■
LED headlights			P2
Intelligent Auto Headlights	■	■	■
Fog lights			■
LED taillights	■	■	■
Power outside mirrors	■		
Power heated outside mirrors with LED turn signal indicators	SE	■	■
Roof rails <sup>2</sup>	SE	■	■
Rear spoiler	■	■	■
Motion Activated Liftgate		■	■
Dual Panel Panoramic Moonroof		ST	P2
Rear privacy glass	SE	■	■
Chrome exterior door handles	SE	■	■
Special Edition exterior badging	SE		

Comfort/Convenience	S	SV	SL
Air conditioner with microfilter	■		
Dual Zone Automatic Temperature Control		■	■
Rear Door Alert <sup>14</sup>	■	■	■
HomeLink® Universal Transceiver			■
Auto-dimming inside rearview mirror			■
Integrated Key with remote keyless entry	■		
Nissan Intelligent Key® with Push Button Ignition		■	■
Remote Engine Start System with Intelligent Climate Control <sup>24</sup>		■	■
Intermittent rear window wiper	■	■	■
Memory System – driver's seat and outside mirrors		P1, ST	■
Sun visors with illuminated vanity mirrors and extensions	■	■	■
Four cup holders and four bottle holders	■	■	■
Four cargo tie-down hooks <sup>2</sup>	■	■	■
Divide-N-Hide® Cargo System <sup>2</sup>	■	■	■

Seating/Appointments	S	SV	SL
6-way manual driver's seat	■		
8-way power driver's seat, including 2-way lumbar support		■	■
4-way manual front-passenger's seat	■	■	
4-way power front-passenger's seat			■
EZ FLEX® Seating System with 2nd-row split folding/sliding/reclining seat with pass-through	■	■	■
Cloth seat trim	■	■	
Leather-appointed seats			■
Quick Comfort® heated front seats	SE	■	■
Leather-wrapped steering wheel	SE	■	
Heated leather-wrapped steering wheel		P1, ST	■
Leather-wrapped shift knob	SE	■	■
Chrome interior door handles	SE	■	■

Infotainment	S	SV	SL
Advanced Drive-Assist® Display <sup>15, 16</sup>	■	■	■
NissanConnect® 7" touch-screen display <sup>17</sup>	■	■	■
Nissan Door to Door Navigation with Premium Traffic <sup>26</sup>		P1, ST	■
SiriusXM® Traffic and Travel Link® <sup>17</sup>		P1, ST	■
NissanConnect® Services powered by SiriusXM® with complimentary trial access to 3-year Select and 6-month Premium Plus packages <sup>17</sup>			■
Nissan Voice Recognition for navigation and audio <sup>26</sup>		P1, ST	■
Apple CarPlay® <sup>17</sup>	■	■	■
Android Auto™ <sup>17</sup>	■	■	■
Hands-free Text Messaging Assistant <sup>18</sup>	■	■	■
Bluetooth® Hands-free Phone System <sup>17</sup>	■	■	■
AM/FM/CD audio system with four speakers	■		
AM/FM/CD audio system with six speakers		■	
Bose® Premium Audio System with nine speakers, including dual woofers		ST	■
MP3/WMA CD playback capability	■	■	■
Two USB ports <sup>19</sup>	■	■	■
Bluetooth® streaming audio <sup>17</sup>	■	■	■
SiriusXM® Radio with 3-month complimentary trial access <sup>17</sup>	■	■	■
Speed-sensitive volume control	■	■	■

Safety/Security	S	SV	SL
Nissan Advanced Air Bag System with dual-stage supplemental front air bags with seat belt and occupant-classification sensors <sup>20</sup>	■	■	■
Driver and front-passenger seat-mounted side-impact supplemental air bags <sup>20</sup>	■	■	■
Roof-mounted curtain supplemental air bags with roll-over sensor for side-impact head protection for front and rear-seat outboard occupants <sup>20</sup>	■	■	■
3-point ALR/ELR passenger seat belt system (ELR for driver)	■	■	■
LATCH System (Lower Anchors and Tethers for CHildren)	■	■	■
Knee bolsters	■	■	■
Tire Pressure Monitoring System (TPMS) with Easy-Fill Tire Alert <sup>21, 22</sup>	■	■	■

## CAPACITIES/WEIGHTS/MPG

Capacities	
Seating capacity	5
Interior passenger volume without moonroof (cu. ft.)	105.8
Interior passenger volume with moonroof (cu. ft.)	100.4
Cargo capacity with 2nd row upright (cu. ft.)	39.3
Cargo capacity with rear seats folded down (cu. ft.)	70.0
Fuel tank (gals.)	14.5
Maximum towing capacity (lbs.)	1,102

Curb Weights – Lbs.	S	SV	SL
<b>Base total</b>	<b>S</b>	<b>SV</b>	<b>SL</b>
FWD	3,456	3,488	3,549
AWD	3,583	3,615	3,668

2020 EPA Fuel Economy Estimates <sup>33</sup>	
<b>City/Hwy/Combined MPG</b>	
AWD	25/32/27
FWD	26/33/29

## NISSAN ROADSIDE ASSISTANCE

Your peace of mind is on us. For 36 months or 36,000 miles, whichever comes first, your new Nissan vehicle is covered for the following:<sup>34</sup>

- Flat-tire changes
- Vehicle lockouts
- Trip Interruption benefits
- Emergency fuel delivery
- Jump starts

Follow Nissan on:



visit [NissanUSA.com/rogue](https://www.nissanusa.com/rogue)

PRINTED IN POLAND

■ Standard  
□ Optional

SE Part of S Special Edition Package  
ST Part of SV Sun and Sound Touring Package

P1 Part of SV Premium Package  
P2 Part of SL Premium Package