

NISSAN INTELLIGENT MOBILITY™

Nissan Intelligent Mobility guides everything we do. We're using new technologies to transform cars from mere driving machines into assistants. Together the journey is more confident, connected, and exciting. Whether it's cars that assist in the driving task, or highways that charge your EV as you go along, it's all in the very near future. And it's a future already taking shape in the Nissan you drive today.

SEE PATHFINDER® COME TO LIFE

Go to NissanUSA.com and find an interactive brochure for Pathfinder and every Nissan model in the lineup. Available on desktop, smartphone, or tablet, it's the full product story – including demos, videos, and complete info on trims, colors, and accessories.



Innovation
that excites

2020 PATHFINDER®



¹Intelligent 4x4 cannot prevent collisions or provide enhanced traction in all conditions. Always monitor traffic and weather conditions. ²Availability of features vary by vehicle model year, model, trim level, packaging, and options. ³Feature availability is dependent on vehicle model, trim level, packaging and options. Compatible connected device may be required and feature availability may be dependent on device's capability. Refer to connected device's owner's manual for details. Late availability for some features. **Driving is serious business and requires your full attention.** Only use features and connected devices when safe and legal to do so. Some features, including automatic crash notification and SOS, are dependent upon the telematics device being in operative condition, its ability to connect to a wireless network, compatible wireless network availability, navigation map data and GPS satellite signal receptions, the absence of which can limit or prevent the ability to reach Customer Care or receive support. GPS mapping may not be detailed in all areas or reflect current road status. Never program GPS while driving. Only use Remote Engine Start and Remote Horn features in accordance with any laws, rules or ordinances in effect in your vehicle's location. Some services and features are provided by independent companies not within Nissan's control. **Should service provider terminate or restrict service or features, service or features may be suspended or terminated without notice or with no liability to Nissan or its partners or agents.** Services and features may require compatible cellular network provided by independent companies not within Nissan or its partners' or agents' control. Cellular network signal strength may vary and may not be available in all areas or at all times. Services and features may not function if cellular network is unavailable, restricted, or terminated. Nissan and its partners or agents are not responsible for associated costs or other third party charges that may be required for continued operation due to cellular network unavailability, restriction, or termination (including equipment replacements/upgrades, if available, or roaming charges on alternative networks). Technology is evolving, and changes by independent companies are not within Nissan's or its partners' or agents' control. Enrollment, owner consent, personal identification number (PIN), and subscription agreement may be required to receive full suite of features and services. Trial periods (if applicable) begin on the date of vehicle purchase or lease of a new Nissan. Trial periods may be subject to change at any time and may be subject to early termination without notice. Required subscriptions may be sold separately for each available feature or service after trial period ends, and may continue until you call service provider to cancel. Installation costs, one-time activation fee, other fees and taxes may apply. Fees and programming subject to change. Feature may be subject to age restrictions in some areas. Subscriptions governed by service provider's subscription agreement, terms and conditions and privacy statements available at service provider's website. Text rates or data usage may apply. The Nissan names, logos and slogans are trademarks owned by or licensed to Nissan Motor Co. Ltd. or its North American subsidiaries. Other trademarks and trade names are those of their respective owners. For important safety information, system limitations, and additional operating and feature information, see dealer, Owner's Manual, or NissanUSA.com/connect/important-information. Terms and conditions of Subscriber Agreement apply. NissanConnect EV features are provided by Nissan North America. Sirius XM Connected Vehicle Services Inc. ("Sirius XM") partners with Nissan North America to provide NissanConnect Services powered by SiriusXM. All stated terms, disclosures and limitations of liability associated with connected vehicle services extend to Sirius XM and its affiliate, Sirius XM Radio Inc. SiriusXM is a registered trademark of Sirius XM Radio Inc. ⁴Cargo shown for display purposes only. Cargo and load capacity limited by weight and distribution. Always secure cargo. Heavy loading of the vehicle with cargo, especially on the roof, will affect the handling and stability of the vehicle. ⁵Genuine Nissan Accessory Roof Rail Crossbars have a maximum weight limit of 100 lbs. ⁶Automatic Emergency Braking cannot prevent all collisions and may not provide warning or braking in all conditions. Driver should monitor traffic conditions and brake as needed to prevent collisions. See Owner's Manual for safety information. ⁷Available feature. Rear Cross Traffic Alert may not detect all vehicles. See Owner's Manual for safety information. ⁸Available feature. Blind Spot Warning cannot prevent collisions and may not detect every object or warn in all situations. Driver should always turn and look before changing lanes. See Owner's Manual for safety information. ⁹Available feature. Intelligent Cruise Control uses limited braking and is not a collision avoidance or warning system. Driver should monitor traffic conditions and brake as needed to prevent collisions. See Owner's Manual for safety information. ¹⁰Slide forward function should not be performed with the CRS occupied. See Owner's Manual for safety information. ¹¹See Owner's Manual for safety information. ¹²Limited availability. ¹³Extra cost option. ¹⁴Please follow Towing Guidelines. Towing capability varies by configuration. See Nissan Towing Guide and Owner's Manual for additional information. ¹⁵Sonar System may not detect every object. Driver should always check surroundings before driving. See Owner's Manual for safety information. ¹⁶Driving is serious business and requires your full attention. If you have to use the feature while driving, exercise extreme caution at all times so full attention may be given to vehicle operation. ¹⁷Information displayed is dependent on how vehicle is equipped. ¹⁸RearView Monitor may not detect every object and does not eliminate blind spots or warn of moving objects. See Owner's Manual for safety information. ¹⁹Driving is serious business and requires your full attention. If you have to use the connected device while driving, exercise extreme caution at all times so full attention may be given to vehicle operation. ²⁰Air bags are only a supplemental restraint system. Always wear your seat belt. Rear-facing child restraints should not be placed in the front-passenger's seat. All children 12 and under should ride in the rear seat properly secured in child restraints, booster seats, or seat belts according to their size. Air bags will only inflate in certain accidents. See Owner's Manual for safety information. ²¹Vehicle Dynamic Control cannot prevent collisions due to abrupt steering, carelessness, or dangerous driving techniques. It should remain on when driving, except when freeing the vehicle from mud or snow. See Owner's Manual for safety information. ²²Tire Pressure Monitoring System is not a substitute for regular tire pressure checks. See Owner's Manual for safety information. ²³Vehicle must be on for the Easy-Fill Tire Alert to operate. ²⁴State laws may apply. Review before using. ²⁵Never program while driving. GPS mapping may not be detailed in all areas or reflect current road status. ²⁶Intelligent Around View® Monitor cannot eliminate blind spots and may not detect every object. Driver should always turn and check surroundings before driving. See Owner's Manual for safety information. ²⁷Requires compatible auxiliary media system. See Owner's Manual for details. ²⁸Genuine Nissan Accessories are covered by Nissan's Limited Warranty on Genuine Nissan Replacement Parts, Genuine NISMO® S-Tune Parts, and Genuine Nissan Accessories for the longer of 12 months/12,000 miles (whichever occurs first) or the remaining period under the 3-year/36,000-mile (whichever occurs first) Nissan New Vehicle Limited Warranty. Terms and conditions apply. See dealer, Warranty Information Booklet, or parts.NissanUSA.com for details. ²⁹Not a genuine Nissan part/accessory. Not warranted by Nissan. Refer to product manufacturer for warranty details. Nissan Limited Warranty does not cover damages or failures to the vehicle caused by improper installation or alterations of any Nissan-approved accessory or component. Contact your dealer/retailer for details. ³⁰Photo is an example only. Nissan vehicle shown may not represent name, model, or current model year. Yakima® is a registered trademark of Yakima Products, Inc. ³¹Brake Assist cannot prevent all collisions and may not provide warning or braking in all conditions. Driver should monitor traffic conditions and brake as needed to prevent collisions. See Owner's Manual for safety information. ³²Do not ride in a moving vehicle when the seatback is reclined. For the most effective protection, the seat should be upright. See Owner's Manual for safety information. ³³Leather-appointed seats for 1st- and 2nd-row seats only. ³⁴2019 EPA fuel economy estimates shown. 2020 EPA estimates not available at time of printing. Actual mileage may vary with driving conditions – use for comparison only. ³⁵For a period of 36 months/36,000 miles from the date the vehicle is delivered to the first retail buyer or otherwise put into use, whichever is earlier. Bluetooth® is a registered trademark of Bluetooth SIG, Inc. Bose® is a registered trademark of The Bose Corporation. Facebook® is a registered trademark of Facebook, Inc. HD Radio® is a registered trademark of iBiquity Digital Corporation. HomeLink® is a registered trademark of Gentex Corporation. The Sirius®, XM®, and SiriusXM® names and all related marks and logos are trademarks of Sirius XM Radio Inc. All other trademarks are the property of their respective owners. Twitter® is a registered trademark of Twitter, Inc. Yakima® is a registered trademark of Yakima Products, Inc. Google, YouTube® and other marks are trademarks of Google LLC. This brochure is intended for general descriptive and informational purposes only. It is subject to change and does not constitute an offer, representation or warranty (express or implied) by Nissan North America, Inc. Interested parties should confirm the accuracy of any information in this brochure as it relates to a vehicle directly with Nissan North America, Inc., before relying on it to make a purchase decision. Nissan North America, Inc., reserves the right to make changes, at any time, without prior notice, in prices, colors, materials, equipment, specifications, and models and to discontinue models or equipment. Due to continuous product development and other pre- and post-production factors, actual vehicle, materials and specifications may vary from this brochure. Some vehicles shown with optional equipment. See the actual vehicle for complete accuracy. Availability and delivery times for particular models or equipment may vary. Specifications, options and accessories may differ in Hawaii, U.S. territories and other countries. For additional information on availability, options or accessories, see your Nissan dealer or contact Nissan North America, Inc. At NissanUSA.com, you'll find virtual product demonstrations, a way to "build your own Nissan," a dealer locator, and more information about key Nissan support services. Or if you'd prefer, call **1-800-NISSAN-3** for answers to specific questions about Pathfinder® or any other Nissan vehicle. The Nissan names, logos, product names, feature names, and slogans are trademarks owned by or licensed to Nissan Motor Co. Ltd. and/or its North American subsidiaries. Other trademarks and trade names are those of their respective owners. **Always wear your seat belt, and please drive responsibly.**



For a world with lots of challenges, the Pathfinder® has lots of answers. Rough terrain? Available Intelligent 4x4 can adapt.¹ Driver assist features can add confidence to every drive.² If you want to use your compatible smartphone, you can connect seamlessly.³ And when the whole crew wants in, Pathfinder grants comfort and cargo flexibility to all.⁴ This is the new way to adventure. This is Nissan Intelligent Mobility.



ROCK CREEK™ EDITION

Adventure has a bold new look. Over thirty years of rugged capability are behind your next family adventure, while distinctive touches inside and out pay homage to a legend. The Pathfinder® Rock Creek Edition. Forge ahead in style.

ADVANCED DRIVING TECHNOLOGIES

Whether you're changing lanes on the highway, maneuvering out of a parking spot, or following stop-and-go traffic, Pathfinder's available driver assistance features, including standard Automatic Emergency Braking, help you see more, sense more, and can even give you an assist when you need it most.⁶



- Rear Cross Traffic Alert⁷
- Blind Spot Warning⁸
- Automatic Emergency Braking⁶
- Intelligent Cruise Control⁹



HANDS-FREE ACCESS

Carrying everything at once? No problem. Just kick your foot under the rear bumper and the available Motion Activated Liftgate will open for you. And there's no more fumbling for keys, thanks to the available Nissan Intelligent Key® with Push Button Ignition. Just step inside, push a button, and away you go.⁴

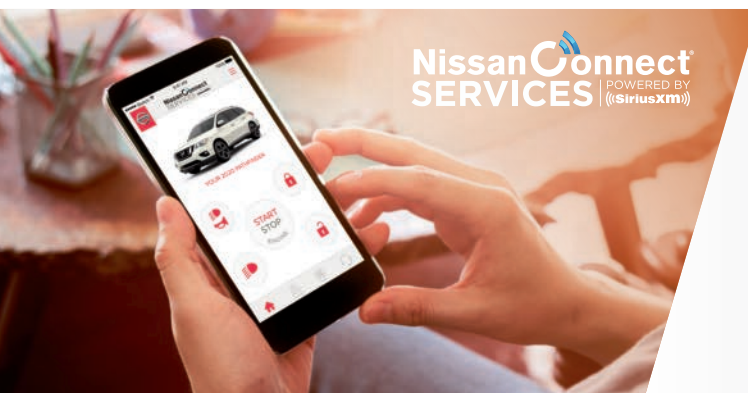
THREE ROWS OF FLEXIBILITY

With the EZ FLEX® Seating System's LATCH AND GLIDE® technology, the right side of the 2nd row glides and tilts forward for 3rd-row access, even with a child seat in place.¹⁰ And with so many possible seating configurations, Pathfinder is always ready for the next adventure.



ALERTS YOU CAN COUNT ON

Never forget something in the back seat again with the innovative Rear Door Alert system. If the system detects you may have left something, it gives you a visual and audible alert to remind you to check the rear seat.¹¹

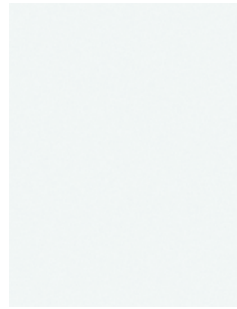


NissanConnect SERVICES POWERED BY SIRIUSXM

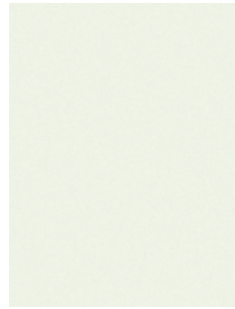
REMOTE START FROM YOUR PHONE

If you forget to lock your Pathfinder, or need to unlock it, simply log in to the NissanConnect® Services app or Owner Portal to remotely lock or unlock your doors. You can even check your vehicle's location on a map at any time, or start it remotely. It works nearly anywhere your compatible smartphone works. Now that's cool.³

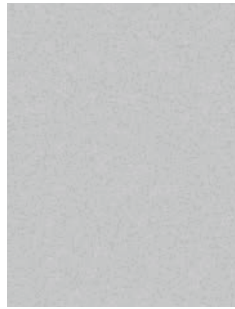
CHOOSE YOUR COLOR



Glacier White



Pearl White TriCoat¹²



Brilliant Silver Metallic



Gun Metallic



Mocha Almond Pearl

S SV SL RCE PLT

S SV SL RCE PLT

S SV SL RCE PLT

S SV SL RCE PLT

S SV SL RCE PLT

CHARCOAL CLOTH	■	■			
ALMOND CLOTH		■			
CHARCOAL LEATHERETTE/ GRAY CLOTH				■	
CHARCOAL LEATHER			■		
ALMOND LEATHER			■		
CHARCOAL LEATHERETTE/ GRAY LEATHER				■	
CHARCOAL PERFORATED LEATHER					■
ALMOND PERFORATED LEATHER					■

CHARCOAL CLOTH					
ALMOND CLOTH					
CHARCOAL LEATHERETTE/ GRAY CLOTH					
CHARCOAL LEATHER					
ALMOND LEATHER					
CHARCOAL LEATHERETTE/ GRAY LEATHER					
CHARCOAL PERFORATED LEATHER					
ALMOND PERFORATED LEATHER					

CHARCOAL CLOTH					
ALMOND CLOTH					
CHARCOAL LEATHERETTE/ GRAY CLOTH					
CHARCOAL LEATHER					
ALMOND LEATHER					
CHARCOAL LEATHERETTE/ GRAY LEATHER					
CHARCOAL PERFORATED LEATHER					
ALMOND PERFORATED LEATHER					

CHARCOAL CLOTH					
ALMOND CLOTH					
CHARCOAL LEATHERETTE/ GRAY CLOTH					
CHARCOAL LEATHER					
ALMOND LEATHER					
CHARCOAL LEATHERETTE/ GRAY LEATHER					
CHARCOAL PERFORATED LEATHER					
ALMOND PERFORATED LEATHER					

CHARCOAL CLOTH					
ALMOND CLOTH					
CHARCOAL LEATHERETTE/ GRAY CLOTH					
CHARCOAL LEATHER					
ALMOND LEATHER					
CHARCOAL LEATHERETTE/ GRAY LEATHER					
CHARCOAL PERFORATED LEATHER					
ALMOND PERFORATED LEATHER					



Scarlet Ember Tintcoat¹²



Caspian Blue Metallic



Midnight Pine Metallic¹³



Magnetic Black Pearl

S SV SL RCE PLT

S SV SL RCE PLT

S SV SL RCE PLT

S SV SL RCE PLT

■ Standard
Nissan has taken care to ensure that the color swatches presented here are the closest possible representations of actual vehicle colors. Swatches may vary slightly due to the printing process and whether viewed in daylight, fluorescent or incandescent light. Please see the actual colors at your dealer.

CHARCOAL CLOTH		■			
ALMOND CLOTH					
CHARCOAL LEATHERETTE/ GRAY CLOTH				■	
CHARCOAL LEATHER			■		
ALMOND LEATHER			■		
CHARCOAL LEATHERETTE/ GRAY LEATHER				■	
CHARCOAL PERFORATED LEATHER					■
ALMOND PERFORATED LEATHER					■

CHARCOAL CLOTH					
ALMOND CLOTH					
CHARCOAL LEATHERETTE/ GRAY CLOTH					
CHARCOAL LEATHER					
ALMOND LEATHER					
CHARCOAL LEATHERETTE/ GRAY LEATHER					
CHARCOAL PERFORATED LEATHER					
ALMOND PERFORATED LEATHER					

CHARCOAL CLOTH					
ALMOND CLOTH					
CHARCOAL LEATHERETTE/ GRAY CLOTH					
CHARCOAL LEATHER					
ALMOND LEATHER					
CHARCOAL LEATHERETTE/ GRAY LEATHER					
CHARCOAL PERFORATED LEATHER					
ALMOND PERFORATED LEATHER					

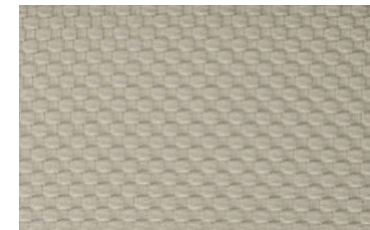
CHARCOAL CLOTH					
ALMOND CLOTH					
CHARCOAL LEATHERETTE/ GRAY CLOTH					
CHARCOAL LEATHER					
ALMOND LEATHER					
CHARCOAL LEATHERETTE/ GRAY LEATHER					
CHARCOAL PERFORATED LEATHER					
ALMOND PERFORATED LEATHER					

CHARCOAL CLOTH					
ALMOND CLOTH					
CHARCOAL LEATHERETTE/ GRAY CLOTH					
CHARCOAL LEATHER					
ALMOND LEATHER					
CHARCOAL LEATHERETTE/ GRAY LEATHER					
CHARCOAL PERFORATED LEATHER					
ALMOND PERFORATED LEATHER					

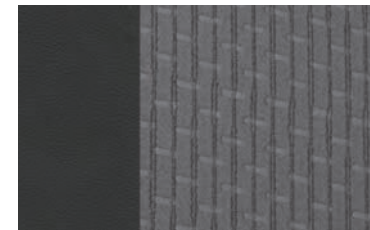
CHOOSE YOUR INTERIOR



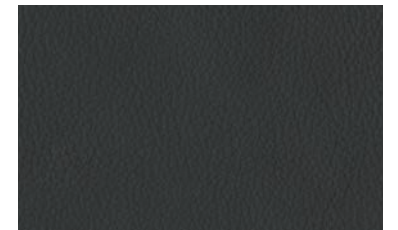
Charcoal Cloth
S|SV



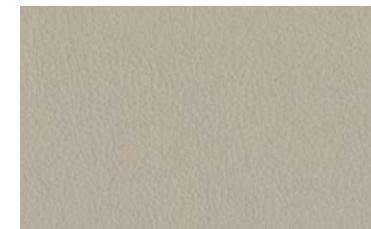
Almond Cloth
SV



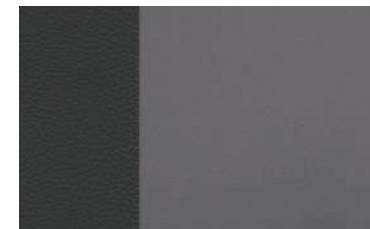
Charcoal Leatherette/Gray Cloth
SV ROCK CREEK™ EDITION



Charcoal Leather
SL



Almond Leather
SL



Charcoal Leatherette/Gray Leather
SL ROCK CREEK™ EDITION



Charcoal Perforated Leather
PLATINUM



Almond Perforated Leather
PLATINUM

CHOOSE YOUR TRIM LEVEL

S

3.5-liter Direct Injection Gasoline™ (DIG), V6 engine with 284 hp and 259 lb-ft of torque, Xtronic CVT® (Continuously Variable Transmission), Available Intelligent 4x4,¹ Hill start assist, Hill descent control (4WD only), Up to 6,000 lbs. maximum towing capacity,¹⁴ 18" Aluminum-alloy wheels, LED Daytime Running Lights, Rear Sonar System,¹⁵ EZ FLEX® Seating System with LATCH AND GLIDE®, Tri-Zone Automatic Temperature Control System, Piano Black interior trim, Advanced Drive-Assist® Display,^{16, 17} NissanConnect® 8" touch-screen display, SiriusXM® Travel Link® with 3-year complimentary trial access,³ RearView Monitor,¹⁸ Bluetooth® Hands-free Phone System,³ Rear Door Alert,¹¹ Six USB ports,¹⁹ Streaming audio via Bluetooth® wireless technology,³ SiriusXM® Radio with 3-month complimentary trial access,³ Automatic Emergency Braking,⁶ Nissan Advanced Air Bag System,²⁰ Vehicle Dynamic Control (VDC)²¹ with Traction Control System (TCS), Tire Pressure Monitoring System (TPMS) with Easy-Fill Tire Alert^{22, 23}



ROCK CREEK™ EDITION

INCLUDES SV OR SL EQUIPMENT PLUS:

18" Dark-finished aluminum-alloy wheels, 255/60R18 all-season tires, Black front grille, Unique lower front fascia, Black roof rails,⁴ Black outside mirrors and door handles, Black overfenders, Black front and rear bumper accents, Black license plate finisher, Rock Creek Edition black exterior badging, Black splash guards, Tow hitch receiver with 7-pin wiring harness,¹⁴ High-contrast interior stitching, Premium Metallic Rock Creek Edition interior trim, Leatherette-appointed seats with cloth inserts and Rock Creek Edition badging (SV Rock Creek Edition), Leather-appointed seats with Rock Creek Edition badging (SL Rock Creek Edition)

KEY AVAILABLE PACKAGES:

SV Rock Creek Edition Technology Package, SL Rock Creek Edition Premium Package



SV

INCLUDES S EQUIPMENT PLUS:

Intelligent Auto Headlights, Fog lights, Nissan Intelligent Key®, Remote Engine Start System,²⁴ 8-way power driver's seat, Leather-wrapped steering wheel and shift knob, Power windows with front windows one-touch auto-up/down, Variable intermittent speed-sensitive flat-blade windshield wipers, Auto-dimming rearview mirror, HomeLink® Universal Transceiver, Intelligent Cruise Control,⁹ Dual illuminated visor vanity mirrors, Blind Spot Warning,⁸ Rear Cross Traffic Alert,⁷ Individual tire pressure display



PLATINUM

INCLUDES SL EQUIPMENT PLUS:

20" Aluminum-alloy wheels, Dual Panel Panoramic Moonroof, Tow hitch receiver with 7-pin wiring harness,¹⁴ Chrome body side moldings, Bose® Premium Audio System with 13 speakers (including Acoustic Waveguide technology), Wood-tone interior trim, Climate-controlled front seats (heated and cooled), Power-tilt/telescoping steering column, Memory System - driver's seat, steering wheel, and outside mirrors

KEY AVAILABLE PACKAGE:

Nissan Mobile Entertainment System Package



SL

INCLUDES SV EQUIPMENT PLUS:

LED low-beam projector headlights, Motion Activated Liftgate,⁴ Heated outside mirrors with reverse tilt-down feature, Nissan Navigation System,²⁵ NissanConnect Services powered by SiriusXM® with complimentary trial access to 3-year Select and 6-month Premium Plus packages,³ SiriusXM® Traffic with 3-year complimentary trial access,³ Intelligent Around View® Monitor,²⁶ Welcome lighting, 10-way power driver's seat, including 2-way lumbar support, Leather-appointed 1st- and 2nd-row seats and door trim, Memory System - driver's seat and outside mirrors, 4-way power front-passenger's seat, Heated front and 2nd-row outboard seats, Heated steering wheel, Metallic interior trim, 120-volt AC power outlet,¹⁹ Stainless steel front kick plates



CHOOSE YOUR PACKAGE



TECHNOLOGY PACKAGE | SV ROCK CREEK™ EDITION

- Nissan Navigation System²⁵
- NissanConnect® Services powered by SiriusXM® with complimentary trial access to 3-year Select and 6-month Premium Plus packages³
- SiriusXM® Traffic with 3-year complimentary trial access³
- Heated front cloth seats
- Heated steering wheel
- Dual power heated outside mirrors



PREMIUM PACKAGE | SL ROCK CREEK EDITION

- Dual Panel Panoramic Moonroof
- Bose® Premium Audio System with 13 speakers, including Acoustic Waveguide technology



NISSAN MOBILE ENTERTAINMENT SYSTEM PACKAGE | PLATINUM

- Tri-Zone Entertainment System with dual head restraint-mounted 8" displays, remote control, and two wireless headphones²⁷
- DVD playback capability
- Rear HDMI input and USB port for video playback¹⁹

CHOOSE YOUR ACCESSORIES



Every Genuine Nissan Accessory is custom-fit, custom-designed and durability-tested. Each one is also backed by Nissan's 3-year/36,000-mile (whichever occurs first) limited warranty (if installed by dealer at the time of purchase), and can be financed when installed by dealer at time of purchase.²⁸

- A. All-Season Cargo Area Protector⁴**
Because your cargo area has to put up with a lot.
- B. Chrome Rear Bumper Protector**
Protect your bumper from dings and scratches in style.
- C. Tow Hitch Receiver¹⁴**
If you're going to get hitched, do it right.
- D. Interior Accent Lighting**
Starts every trip with a warm glow.
- E. Tablet Holder**
Holds a tablet for convenient rear-passenger viewing and use.
- F. Yakima® LoadWarrior Cargo Basket^{4, 5, 29, 30}**
Carry extra cargo easily and safely atop your roof.
- G. All-Season Floor Mats (4-piece set)**
Never question stepping in from the rain or snow.
- H. Illuminated Kick Plates**
For a grand entry, every time.

Additional Accessories:

- Rock Creek™ Edition Carpeted Cargo Area Protector⁴
- Impact Sensor
- Frameless Auto-dimming Rearview Mirror with Universal Remote
- Carpeted Floor Mats (4-piece set)
- Under-floor Storage Dividers
- Cargo Net⁴
- Rear Cargo Cover⁴
- Hatch Tent
- Additional Yakima® Accessories²⁹
- And More

GENUINE NISSAN ACCESSORIES

PUSH ADVENTURE TO NEW HEIGHTS

For more information and to shop online for Pathfinder® Genuine Nissan Accessories, go to bit.ly/20pathfinder-estore



See Pathfinder® in action at: bit.ly/20pathfindervideo

Nissan Pathfinder® SL shown in Scarlet Ember Tintcoat with Fog Lights (standard on Pathfinder SL), Exterior Ground Lighting, Splash Guards, Hood Protector, Side-window Deflectors, Running Boards, and Roof Rail Crossbars.^{4, 5}

SPECIFICATIONS

Engine	S	SV	SV Rock Creek™	SL	SL Rock Creek™	PLT
3.5-liter Direct Injection Gasoline™ (DIG) DOHC 24-valve V6 engine	■	■	■	■	■	■
—Horsepower – 284 hp @ 6,400 rpm						
—Torque – 259 lb-ft @ 4,800 rpm						
Continuously Variable Valve Timing Control System (CVTCS) on intake and exhaust valves	■	■	■	■	■	■
Multi-point, direct fuel injection	■	■	■	■	■	■
Variable induction system	■	■	■	■	■	■
Nissan Direct Ignition System	■	■	■	■	■	■
Electronic drive-by-wire throttle	■	■	■	■	■	■

Drivetrain	S	SV	SV Rock Creek™	SL	SL Rock Creek™	PLT
Front engine/Front-Wheel Drive	■	■	■	■	■	■
Intelligent 4x4 ¹	□	□	□	□	□	□
Xtronic CVT® (Continuously Variable Transmission)	■	■	■	■	■	■

Brakes	S	SV	SV Rock Creek™	SL	SL Rock Creek™	PLT
4-wheel vented disc brakes	■	■	■	■	■	■
Anti-lock Braking System (ABS)	■	■	■	■	■	■
Electronic Brake force Distribution (EBD)	■	■	■	■	■	■
Brake Assist ³¹	■	■	■	■	■	■

Suspension/Chassis Bracing/Steering	S	SV	SV Rock Creek™	SL	SL Rock Creek™	PLT
Independent strut front suspension	■	■	■	■	■	■
Independent multi-link rear suspension	■	■	■	■	■	■
Dual Flow Path® shock absorbers	■	■	■	■	■	■
Front and rear stabilizer bars	■	■	■	■	■	■
Electronic hydraulic power-assisted speed-sensitive steering	■	■	■	■	■	■

Driver Assistance Technologies	S	SV	SV Rock Creek™	SL	SL Rock Creek™	PLT
Automatic Emergency Braking ⁶	■	■	■	■	■	■
Blind Spot Warning ⁸		■	■	■	■	■
Rear Cross Traffic Alert ⁷		■	■	■	■	■
RearView Monitor ¹⁸	■	■	■	■	■	■
Intelligent Around View® Monitor ²⁶			■	■	■	■
Rear Sonar System ¹⁵	■	■	■	■	■	■
Cruise control	■	■	■	■	■	■
Intelligent Cruise Control ⁹		■	■	■	■	■
Vehicle Dynamic Control (VDC) ²¹ with Traction Control System (TCS)	■	■	■	■	■	■
Hill start assist	■	■	■	■	■	■
Hill descent control (4WD only)	□	□	□	□	□	□

Wheels/Tires	S	SV	SV Rock Creek™	SL	SL Rock Creek™	PLT
18" x 7.5" aluminum-alloy wheels	■	■	■	■	■	■
18" x 7.5" dark-finished aluminum-alloy wheels		■	■	■	■	■
20" x 7.5" aluminum-alloy wheels			■	■	■	■
P235/65R18 all-season tires	■	■	■	■	■	■
P255/60R18 all-season tires			■	■	■	■
P235/55R20 all-season tires			■	■	■	■

Exterior Features	S	SV	SV Rock Creek™	SL	SL Rock Creek™	PLT
LED Daytime Running Lights	■	■	■	■	■	■
Intelligent Auto Headlights		■	■	■	■	■
LED low-beam projector headlights			■	■	■	■
Fog lights		■	■	■	■	■

Exterior Features (continued)	S	SV	SV Rock Creek™	SL	SL Rock Creek™	PLT
Black front grille			■		■	
Unique lower front fascia			■		■	
Black overfenders			■		■	
Roof rails ⁴	■	■		■		■
Black roof rails ⁴			■		■	
Tow hitch receiver with 7-pin wiring harness ¹⁴			■		■	■
Black outside mirrors			■		■	
Dual power outside mirrors with LED turn signal indicators	■	■	■	■	■	■
Heated outside mirrors			T	■	■	■
Outside mirrors with reverse tilt-down feature				■	■	■
Black door handles			■		■	
Chrome body side moldings						■
Motion Activated Liftgate				■	■	■
Dual Panel Panoramic Moonroof					P	■
Black license plate finisher			■		■	
Rock Creek Edition black badging			■		■	
Splash guards			■		■	

Comfort/Convenience	S	SV	SV Rock Creek™	SL	SL Rock Creek™	PLT
Push Button Ignition	■	■	■	■	■	■
Remote keyless entry	■					
Nissan Intelligent Key®		■	■	■	■	■
Remote Engine Start System ²⁴		■	■	■	■	■
HomeLink® Universal Transceiver		■	■	■	■	■
Tri-Zone Automatic Temperature Control System	■	■	■	■	■	■
Rear Door Alert ¹¹	■	■	■	■	■	■
Variable intermittent flat-blade windshield wipers	■	■	■	■	■	■
Speed-sensitive windshield wipers		■	■	■	■	■
Auto-dimming rearview mirror		■	■	■	■	■
Welcome lighting			■	■	■	■
120-volt AC power outlet ¹⁹			■	■	■	■
Tilt/telescoping steering column	■	■	■	■	■	■
Power tilt/telescoping steering column						■

Seating/Appointments	S	SV	SV Rock Creek™	SL	SL Rock Creek™	PLT
6-way manual driver's seat	■					
8-way power driver's seat		■	■			
10-way power driver's seat, including 2-way lumbar support			■	■	■	■
Driver's seat manual lumbar	■	■	■			
Memory System – driver's seat and outside mirrors			■	■		■
Memory System – driver's seat, steering wheel, and outside mirrors			■	■		■
4-way manual front-passenger's seat	■	■	■			
4-way power front-passenger's seat				■	■	■
EZ FLEX® Seating System with 2nd-row 60/40 split fold-flat bench seat featuring LATCH AND GLIDE® and 3rd-row 50/50 split fold-flat reclining bench seat ^{10, 32}	■	■	■	■	■	■
Cloth seat trim	■	■				
Leatherette-appointed seats with cloth inserts and Rock Creek Edition badging			■			
Leather-appointed seats with Rock Creek Edition badging					■	
Leather-appointed 1st- and 2nd-row seats and door trim ³³				■		■

Seating/Appointments (continued)	S	SV	SV Rock Creek™	SL	SL Rock Creek™	PLT
High-contrast interior stitching			■		■	
Heated front seats			T	■	■	
Climate-controlled front seats (heated and cooled)				■	■	■
Heated 2nd-row outboard seats				■	■	■
Heated steering wheel			T	■	■	■
Leather-wrapped steering wheel and shift knob		■	■	■	■	■
Piano Black interior trim	■	■				
Metallic interior trim				■		
Premium Metallic Rock Creek Edition interior trim			■		■	
Wood-tone interior trim				■	■	■
Stainless steel front kick plates				■	■	■

Infotainment	S	SV	SV Rock Creek™	SL	SL Rock Creek™	PLT
Advanced Drive Assist® Display ^{16, 17}	■	■	■	■	■	■
NissanConnect® 8" touch-screen display ³	■	■	■	■	■	■
Nissan Navigation System ²⁵			T	■	■	■
NissanConnect Services powered by SiriusXM® with complimentary trial access to 3-year Select and 6-month Premium Plus packages ³			T	■	■	■
SiriusXM® Travel Link® with 3-year complimentary trial access ³	■	■	■	■	■	■
SiriusXM® Traffic with 3-year complimentary trial access ³			T	■	■	■
Bluetooth® Hands-free Phone System ³	■	■	■	■	■	■
AM/FM/CD audio system with six speakers	■	■	■	■	■	
Bose® Premium Audio System with 13 speakers, including Acoustic Waveguide technology					P	■
Tri-Zone Entertainment System ²⁷						M
SiriusXM® Radio with 3-month complimentary trial access ³	■	■	■	■	■	■
HD Radio®	■	■	■	■	■	■
RCA auxiliary video input jack ¹⁹						M
DVD playback capability						M
Rear HDMI input and USB port for video playback ¹⁹						M
Six USB ports ¹⁹	■	■	■	■	■	■
Streaming audio via Bluetooth® wireless technology ³	■	■	■	■	■	■
Illuminated steering wheel-mounted audio controls	■	■	■	■	■	■

Safety/Security	S	SV	SV Rock Creek™	SL	SL Rock Creek™	PLT
Nissan Advanced Air Bag System with dual-stage supplemental front air bags with seat belt and occupant-classification sensors ²⁰	■	■	■	■	■	■
Driver and front-passenger seat-mounted side-impact supplemental air bags ²⁰	■	■	■	■	■	■
Roof-mounted curtain side-impact supplemental air bags with rollover sensor for outboard occupant head protection for all three rows ²⁰	■	■	■	■	■	■
LATCH System (Lower Anchors and Tethers for Children)	■	■	■	■	■	■
Tire Pressure Monitoring System (TPMS) with Easy-Fill Tire Alert ^{22, 23}	■	■	■	■	■	■
Individual tire pressure display			■	■	■	■

■ Standard
□ Optional

T Part of SV Rock Creek Edition Technology Package
P Part of SL Rock Creek Edition with Premium Package
M Part of Platinum Nissan Mobile Entertainment System Package

DIMENSIONS/CARGO/CAPACITIES/WEIGHTS/MPG

Dimensions – Inches	
Exterior	
Wheelbase/track width	114.2/65.7
Overall length/height/width	198.5/70.6/77.3 (78.3 for Rock Creek Edition)

Aerodynamics – Cd	
Drag coefficient	0.34

Interior (1st/2nd/3rd row)			
Head room without moonroof	42.2/39.4/37.8	Leg room	42.2/41.7/30.7
Head room with moonroof	41.1/38.5/36.5	Hip room	56.8/56.0/42.0
Shoulder room	60.9/60.4/57.1		

Cargo – Inches	
Maximum length/width/height	78.9/45.9/31.4

Capacities	
Seating capacity	7
Interior passenger volume without moonroof (cu. ft.)	137.8
Interior passenger volume with moonroof (cu. ft.)	133.7
Fuel tank (gals.)	19.5

Maximum Towing Capacity (Lbs.) ¹⁴						
	S	SV	SV RCE	SL	SL RCE	PLT
Standard	6,000	6,000	6,000	6,000	6,000	6,000

Curb Weights – Lbs.				
	S	SV	SL	PLT
2WD	4,287	4,302	4,335	4,523
4WD	4,427	4,442	4,475	4,659

2019 EPA Fuel Economy Estimates ³⁴						
City/Hwy/Combined MPG	S	SV	SV RCE	SL	SL RCE	PLT
2WD	20/27/23	20/27/23	20/27/23	20/27/23	20/27/23	20/27/23
4WD	19/26/22	19/26/22	19/26/22	19/26/22	19/26/22	19/26/21

NISSAN ROADSIDE ASSISTANCE

Your peace of mind is on us. For 36 months or 36,000 miles, whichever comes first, your new Nissan vehicle is covered for the following:³⁵

- Flat-tire changes
- Trip Interruption benefits
- Jump starts
- Vehicle lockouts
- Emergency fuel delivery

Follow Nissan on:



visit [NissanUSA.com/pathfinder](https://www.nissanusa.com/pathfinder)

PRINTED IN POLAND