

2020
EDGE

SE | SEL | TITANIUM | ST





BUILT TO INSPIRE.

By commanding attention wherever you go. By adapting quickly to your changing needs. By providing technology that can help you stay connected on the go. And by helping you more confidently navigate your world – with standard Ford Co-Pilot360™. The 2020 Ford Edge can help you do it all. It's a spirited confidence that runs deep, embodied in every vehicle that carries our family name. We've been perfecting our craft and striving to improve lives for over 116 years. Our first SUVs took you "out there." Our current lineup takes you capably to your destination in comfort and style. We build for the adventurers. And we pour our hearts into everything we build.



Titanium. Rapid Red Metallic Tinted Clearcoat. Available equipment. ¹Driver-assist features are supplemental and do not replace the driver's attention, judgment and need to control the vehicle. ²Horsepower rating based on premium fuel per SAE J1349® standard. Your results may vary.

8
SPEED
Automatic
Transmission

2
ECOBOOST® ENGINES
SE, SEL and Titanium are powered by a 2.0L twin-scroll turbocharged, direct-injection engine. A 2.7L twin-turbocharged V6 with an impressive 335 horses² powers Edge ST.

FWD
OR
AVAILABLE
AWD

ELITE UPGRADE
Choose the Elite Package on the 2020 Edge Titanium, and you'll be treated to a uniquely new interior environment that further enhances its modern sophistication.



DESIGNED TO EMPOWER.

PUSH START AND GO

Your Intelligent Access key fob gets you in, and push-button start gets you going without having to insert a key. Whatever you access or touch, the 2020 Ford Edge is designed to indulge, pamper and please.

GO WIRELESS

An available wireless charging pad¹ in front of the center console lets your phone charge cord-free, within reach. And it can keep resting there while you use voice-activated SYNC³.²

Titanium. Medium Soft Ceramic leather-trimmed interior. Available equipment. ¹Qi wireless charging may not be compatible with all mobile phones. ²Don't drive while distracted. Use voice-operated systems when possible; don't use handheld devices while driving. Some features may be locked out while the vehicle is in gear. Not all features are compatible with all phones.




12-SPEAKER SOUND SYSTEM

Standard on ST and Titanium, the B&O Sound System features a 10-channel amplifier pumping 800 watts of digitally processed sound through 12 high-performance speakers, including a subwoofer and 3 midwoofer speakers.



LCD TOUCHSCREEN
with swipe capability is included
with voice-activated SYNC 3.²



STYLED TO EASILY ADAPT.

BRIGHTENS YOUR DRIVE

An available power, panoramic Vista Roof® can flood the interior with natural light to benefit all passengers, while available Blue ambient lighting illuminates the front cupholders, door trim and media bin.

KEEPS YOU CHARGED

Four 12V powerpoints, 2 USB ports and an available 110V/150W AC power outlet on the rear of the center console give you and your passengers plenty of opportunity to keep your devices charged and at the ready.

DIALS IN SIMPLICITY

Simply turn the nicely calibrated rotary gear shift dial to move the 8-speed transmission from Park to Reverse to Drive. The design frees up center console space as well.

THE ECOBOOST ENGINE

ENGINEERED TO EXCITE.

Both EcoBoost® engines on the 2020 Edge are paired with a quick-shifting 8-speed automatic transmission for spirited performance. On models equipped with available all-wheel drive (AWD), AWD disconnect allows for the disconnection of the rear driveline when the system detects AWD is not needed. To help reduce fuel consumption during stop-and-go city driving, standard Auto Start-Stop Technology shuts off the engine when you come to a complete stop. When you release the brake pedal, the engine seamlessly restarts.

EPA-ESTIMATED RATINGS: CITY/HWY/COMBINED MPG¹

MAX. TORQUE (LB.-FT.)²

MAX. HORSEPOWER²

2.0L ECOBOOST

This twin-scroll turbocharged, direct-injection engine has robust low-end torque – and delivers a virtually instantaneous surge of power. “There’s plenty of thrust, and the Edge has a calm, relaxed demeanor we came to appreciate during regular cruising,” says *Car and Driver*.

Standard on SE, SEL, Titanium

2.7L ECOBOOST V6

The most powerful member of the Edge engine lineup sits behind the wide mesh, blacked-out grille of Edge ST. Featuring a light compact graphite iron engine block and aluminum cylinder heads, this twin-turbocharged, direct-injection engine delivers exhilarating V6 horsepower and torque.

Standard on ST



ST. Ford Performance Blue. Available equipment. ¹Actual mileage will vary. ²Horsepower and torque ratings based on premium fuel per SAE J1349® standard. Your results may vary. Torque, horsepower and EPA-estimated fuel economy ratings are independent attributes and may not be achieved simultaneously.

FORD CO-PILOT360™ TECHNOLOGY READY WITH AN ASSIST.

From the driveway to the highway, our driver-assist features¹ are designed to help you feel confidently in command at the wheel of your Edge.

FORD CO-PILOT360

Standard on every 2020 Edge



PRE-COLLISION ASSIST WITH AUTOMATIC EMERGENCY BRAKING

We should all drive defensively. By scanning the road ahead, this feature can alert you to potential collisions with vehicles or pedestrians detected in your path. If an impact is imminent and you don't take action, brakes can apply automatically.² It's designed to only activate when needed.



BLIS® WITH CROSS-TRAFFIC ALERT

Changing lanes demands your full attention. BLIS (Blind Spot Information System) can help by alerting you to vehicles detected in your blind spots. Cross-Traffic Alert helps by detecting and alerting you to traffic behind your vehicle as you're slowly backing up.



LANE-KEEPING SYSTEM

It happens. Listening to your favorite podcast, you wander too close to your lane's edge. Our Lane-Keeping System³ can help during a moment of distraction. If you drift out of your lane, it directs you with steering wheel torque to return, and can also alert you through vibration pulses. Stray a few times and a coffee cup icon lets you know it's time to take a break.



AUTO HIGH-BEAM HEADLAMPS

Sound familiar? You turn on high beams entering a dark stretch of road – then forget to turn them off as traffic approaches. Auto High-Beam Headlamps can detect poor lighting and switch them on for you. They can also sense oncoming headlamps and dim automatically for other drivers.



REAR VIEW CAMERA

Backing up requires a little multitasking. Our Rear View Camera helps by providing a great view of what's behind your vehicle. It also helps when you're lining up a trailer. A washer helps keep the camera free of debris (like dirt or snow), helping you navigate Reverse clearly and with more confidence.

Available equipment shown. ¹Driver-assist features are supplemental and do not replace the driver's attention, judgment and need to control the vehicle. ²Pre-Collision Assist with Automatic Emergency Braking can detect pedestrians, but not in all conditions and does not replace safe driving. See owner's manual for system limitations. ³Lane-Keeping System does not control steering. ⁴If stop is longer than 3 seconds, driver must intervene and press "RES" button or accelerator pedal to resume system operation. ⁵Evasive Steering Assist does not control steering. ⁶Certain restrictions, 3rd-party terms and data rates may apply. See footnote 1 on the "Your Tech, Your Way" pages, and your Ford Dealer for details.



FORD CO-PILOT360 ASSIST+

Optional on SEL, Titanium and ST



ADAPTIVE CRUISE CONTROL (ACC) WITH STOP-AND-GO AND LANE CENTERING

There are few things as tedious as bumper-to-bumper traffic. ACC with Stop-and-Go can help you keep pace on your journey, slowing down or even stopping your vehicle if the traffic ahead has slowed or stopped. When things clear, it can resume your set speed⁴ Lane Centering helps keep Edge between the lines.



EVASIVE STEERING ASSIST⁵

We've all experienced it. Traffic is rolling along smoothly when suddenly, a vehicle in your path is stopped. To help avoid a potential collision, Evasive Steering Assist can provide extra assist to help you quickly steer around the vehicle.



VOICE-ACTIVATED NAVIGATION

Taking the wrong exit can put a serious dent in your day. Stay confidently on course with our Voice-Activated Touchscreen Navigation System, which features SiriusXM® Traffic and Travel Link® services⁶ to help you avoid traffic, find fuel (gas or java), and so much more.

ADDITIONAL TECHNOLOGY



ENHANCED ACTIVE PARK ASSIST

Never pass up a potential parking space again. Enhanced Active Park Assist makes it easy to park time after time – even in tight parallel or reverse perpendicular spots. Just activate, shift, accelerate and brake while Edge takes care of the rest. Park Out Assist with side-sensing capability can help you confidently navigate out of a spot when someone's parked too close.

Available on Titanium and ST



POST-COLLISION BRAKING

We all try to avoid collisions, but sometimes they happen. Post-Collision Braking can potentially lessen the severity of a secondary collision by automatically applying moderate brake pressure when an initial collision event is detected. By slowing the vehicle, additional damage or injury to the occupants can potentially be lessened, especially if the driver is not able to apply the brakes themselves due to the circumstances.

Standard on every 2020 Edge



FRONT 180-DEGREE CAMERA

Maneuvering crowded urban streets can be nerve wracking. This technology helps by supplying a 180-degree view in front of your vehicle. It lets you see to the left and right before you have a line of sight, displaying a view around corners as you slowly proceed. A lens washer even helps to keep the view clear.

Available on Titanium and ST



 SYNC® AppLink¹

YOUR TECH, YOUR WAY.

With seating for up to 5 and Wi-Fi hotspot capability, Ford Edge welcomes a vast array of smartphones, tablets, gaming systems and computers along for the ride. Plus, you can tap into the best in music, sports, comedy, news and talk with SiriusXM® inside your vehicle and on the go, with a 6-month All Access trial subscription! With our available Voice-Activated Touchscreen Navigation System, you'll also enjoy a 5-year subscription¹ to SiriusXM Traffic and Travel Link® services.



androidauto

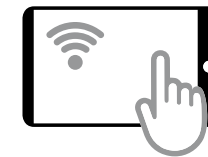
COMMAND IT

With your voice and your choice of display, SYNC® 3 voice-activated technology² connects your tech with your Edge. SYNC 3 AppLink³ (shown) gives you voice control of compatible mobile apps like Waze™ and Ford+Alexa.⁴ To see your phone's familiar interface on the big screen, take advantage of compatibility with Apple CarPlay⁵ for your iPhone® or Android Auto™⁵ for your Android™ smartphone.



CONTROL IT

Monitor and control your vehicle in incredibly powerful ways using the FordPass™ App alone or with FordPass Alexa Skill⁶ or FordPass Action through Google Assistant™ when equipped with FordPass Connect™⁷ Complimentary remote features let you start, lock and unlock your vehicle from just about anywhere, including right from your wrist with your Apple Watch®. Use your app to find your vehicle, schedule starts, find parking⁸ and check fuel and fluid levels. When you need important vehicle information, like Vehicle Health Alerts, service history and Warranty info, the FordPass App puts it at your fingertips. And, when it's time to bring your vehicle in for service, the app makes scheduling easy. Enjoy access to convenient services like Key by Amazon In-Car Delivery⁹ and peace of mind knowing roadside assistance is just a call or e-request away!¹⁰



CONNECT IT

With in-vehicle Wi-Fi. Before you've even unloaded your purchases, you and your friends can be posting your adventure through FordPass Connect⁷ with 4G LTE Wi-Fi hotspot capability. Its powerful antenna provides the ability to connect up to 10 devices at once¹¹ – inside of Edge and up to 50' away.

Available equipment shown. ¹All SiriusXM services require a subscription, sold separately by SiriusXM after the trial period. Fees and taxes apply. See SiriusXM Customer Agreement for complete terms at www.siriusxm.com. All fees, content and features are subject to change. Traffic information not available in all markets. SiriusXM satellite service for 2020 model-year Ford vehicles is not available in Puerto Rico; SiriusXM streaming service is available for purchase. ²Don't drive while distracted. Use voice-operated systems when possible; don't use handheld devices while driving. Some features may be locked out while the vehicle is in gear. Not all features are compatible with all phones. ³Commands may vary by phone and AppLink software. Alexa requires available SYNC 3 AppLink. Certain Alexa functionality is dependent on smart phone and home technology. Don't drive while distracted or while using handheld devices. Use voice controls. Some features may be locked out while the vehicle is in gear. ⁴Waze is available via iPhone with SYNC 3 and on Android Auto. Commands may vary by phone and AppLink software. Alexa requires available SYNC 3 AppLink. Certain Alexa functionality is dependent on smart phone and home technology. Don't drive while distracted or while using handheld devices. Use voice controls. ⁵Requires device with active data service and compatible software. SYNC does not control 3rd-party products while in use. 3rd parties are solely responsible for their respective functionality. ⁶Don't drive while distracted or while using handheld devices. Use voice controls. Certain Alexa functionality is dependent on smart phone and home technology. ⁷FordPass Connect (optional on select vehicles), the FordPass App, and Complimentary Connected Services are required for remote features (see FordPass Terms for details). Connected service and features depend on compatible AT&T network availability. Evolving technology/cellular networks/vehicle capability may limit functionality and prevent operation of connected features. Connected Services exclude Wi-Fi hotspot. ⁸In select cities. ⁹FordPass App, compatible with select smartphone platforms, is available via a download. FordPass Connect service required (see FordPass Terms for more information). Message and data rates may apply. Check your availability at <https://amzn.to/2JnYmtz>. ¹⁰Roadside assistance is included for certain owners and available to everyone for a per-service fee. ¹¹Don't drive while distracted or while using handheld devices. Use voice controls.

OPEN WITH A KICK

If your hands are full as you approach the rear liftgate of Edge, just kick your foot under the bumper. The available hands-free, foot-activated rear liftgate will rise on its own. Edge is as versatile as you are.

EASYFOLD FOR CARGO

An available EasyFold® seat release for the rear seat lets you maximize cargo space with the touch of a button. Fold both sides of the seat back down for large objects. Or leave one side up to carry cargo and passengers side by side.

Titanium. Medium Soft Ceramic leather-trimmed interior. Available equipment.

73.4
CU. FT.
Cargo volume
behind front
seats

CLEVER STORAGE

EXTERIOR (in.)

Wheelbase: **112.2**
Length: **188.8**
Height: **68.3**
Width – Excluding mirrors: **75.9**
Width – Including mirrors: **85.8**
Width – Mirrors folded: **78.4**
Liftover height: **29.6**

INTERIOR (in.)

Front / Rear
Head room: **40.2 / 40.3**
Leg room: **42.6 (max.) / 40.6**
Hip room: **55.9 / 57.5**
Shoulder room: **60.3 / 60.5**

CAPACITIES (cu. ft.)

Passenger volume: **113.9**
Cargo volume behind front seats: **73.4**
Cargo volume behind rear seats: **39.2**
Fuel tank (gal.) FWD / AWD: **18.4 / 18.5**

Cargo and load capacity limited by weight and weight distribution.

SE

SYNC® 3

FORD CO-PILOT360™

FORDPASS CONNECT™¹

Dynamic design and advanced technology find equal expression in Edge SE. Athletic front and rear styling defines its modern sophistication. As does a range of smart technology like: Intelligent Access that gets you in; push-button start that gets you going; a rotary gear shift dial that starts you moving; and Ford Co-Pilot360 Technology² that empowers you to better navigate your world. Voice-activated SYNC 3,³ FordPass Connect¹ with 4G LTE Wi-Fi hotspot capability, and more than 175 channels of SiriusXM^{®4} keep you connected along the way. Get off to a strong start with SE.



COLORS: Desert Gold,⁵ Atlas Blue,⁵ Iconic Silver,⁵ Magnetic,⁵ Agate Black,⁵ Oxford White



2.0L ECOBOOST® WITH AUTO START-STOP TECHNOLOGY

8-SPEED AUTOMATIC TRANSMISSION

SE STANDARD FEATURES:

MECHANICAL

- 4-wheel independent suspension
- Active grille shutters
- Electric power-assisted steering
- Front-wheel drive (FWD)
- Power disc brakes with Anti-Lock Brake System (ABS)
- Rotary gear shift dial
- Torque Vectoring Control

- Manual liftgate
- Manual-tilt/-telescoping steering column
- Overhead console with sunglasses holder
- Power door locks
- Power windows with front one-touch-up/-down feature
- Rear View Camera washer
- Steering wheel-mounted cruise and audio controls

FORD CO-PILOT360 TECHNOLOGY

- Autolamp Automatic On/Off Headlamps
- Ford Co-Pilot360:** Pre-Collision Assist with Automatic Emergency Braking (AEB); BLIS[®] (Blind Spot Information System) with Cross-Traffic Alert; Lane-Keeping System; Auto High-Beam Headlamps; and Rear View Camera
- Hill Start Assist
- Post-Collision Braking
- Rain-Sensing Windshield Wipers
- Reverse Sensing System

CONNECTIVITY & ENTERTAINMENT

- AM/FM stereo with MP3 capability and 6 speakers
- FordPass Connect¹ with 4G LTE Wi-Fi hotspot capability (enables FordPass™ App⁶ features when activated)
- SiriusXM with 6-month All Access trial subscription⁴
- SYNC 3 with 8" LCD touchscreen in center stack, 911 Assist[®], AppLink[®] Apple CarPlay[®] compatibility, Android Auto™ compatibility, and 2 smart-charging USB ports

APPEARANCE

- Bi-LED headlamps
- Black, power sideview mirrors with manual fold-away design
- Body-color rear spoiler
- Dual brushed stainless steel exhaust tips
- Front and rear door-sill scuff plates
- LED taillamps
- Privacy glass on all rear windows

SAFETY & SECURITY

- Personal Safety System™ for driver and front passenger includes dual-stage front airbags,⁷ safety belt pretensioners, safety belt energy management retractors, safety belt usage sensors, driver's seat position sensor, crash severity sensor, restraint control module and Front-Passenger Sensing System
- Driver's knee airbag⁷
- Glove-box-door-integrated knee airbag⁷
- Front-seat side airbags⁷
- Safety Canopy[®] side-curtain airbags⁷ with rollover sensor
- AdvanceTrac[®] with RSC[®] (Roll Stability Control™) and Curve Control
- Front height-adjustable shoulder safety belts
- Individual Tire Pressure Monitoring System (excludes spare)
- Intelligent Access with push-button start
- MyKey[®] technology to help encourage responsible driving
- SecuriLock[®] Passive Anti-Theft System
- SOS Post-Crash Alert System™

COMFORT & CONVENIENCE

- 10-way power driver's seat and 4-way manual front-passenger seat
- 12V powerpoints (4)
- Acoustic-laminate windshield
- Below-floor Rear Cargo Management System
- Cargo tie-down hooks
- Cargo net
- Coat hooks (2)
- Compass and outside temperature displays
- Cupholders/beverage holders (8)
- Illuminated visor vanity mirrors
- Dual-zone electronic automatic temperature control
- Easy Fuel[®] capless fuel filler
- Front and rear carpeted floor mats
- Front (2) and rear (2) grab handles
- Front center console with storage tray, armrest, powerpoint and 2 cupholders

OPTIONS

- Cargo Accessories Package:** interior cargo cover, cargo area protector, and rear bumper protector
- All-wheel drive (AWD; includes AWD disconnect)
- Black roof-rack side rails
- Dual-Headrest Rear Seat Entertainment System^{8,9}
- Engine block heater
- Front and rear floor liners
- P235/60R18 all-season snow chain-compatible tires (requires AWD)
- Wheel-locking lug nuts



CLOTH SEATING SURFACES: Dune, Ebony



18"
SPARKLE SILVER-PAINTED ALUMINUM
Standard

Available equipment shown. ¹FordPass Connect (optional on select vehicles), the FordPass App, and Complimentary Connected Services are required for remote features (see FordPass Terms for details). Connected Service and features depend on compatible AT&T network availability. Evolving technology/cellular networks/vehicle capability may limit functionality and prevent operation of connected features. Connected Services exclude Wi-Fi hotspot. Don't drive distracted or while using handheld devices. Use voice controls. ²Driver-assist features are supplemental and do not replace the driver's attention, judgment and need to control the vehicle. ³Don't drive while distracted. Use voice-operated systems when possible; don't use handheld devices while driving. Some features may be locked out while the vehicle is in gear. ⁴Certain restrictions, 3rd-party terms and data rates may apply. See footnote 1 on the "Your Tech, Your Way" pages, and your Ford Dealer for details. ⁵Metallic. ⁶FordPass App, for use with FordPass Connect, is available via download and compatible with select smartphone platforms. FordPass is on the App Store[®] and Google Play.[™] Learn more at www.fordpass.com. Message and data rates may apply. ⁷Always wear your safety belt and secure children in the rear seat. ⁸Ford Licensed Accessory. ⁹Restrictions may apply. See dealer for details.

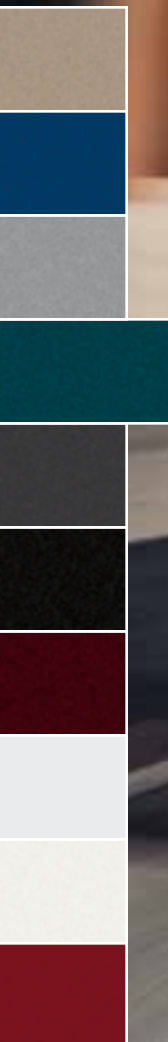
SEL

LEATHER-WRAPPED STEERING WHEEL

EASYFOLD® REAR SEAT BACK RELEASE

SECURICODE™ INVISIBLE KEYPAD

A long list of standards helps you stay sharp in Edge SEL. Enjoy LED fog lamps, heated front seats, a 6-way power front-passenger seat, unique interior accents, and an auto-dimming rearview mirror. Make SEL even more your own with an available power, panoramic Vista Roof® and available Ford Co-Pilot360™ Assist+ – which adds Adaptive Cruise Control with Stop-and-Go and Lane Centering, and Evasive Steering Assist. Our Voice-Activated Touchscreen Navigation System with pinch-to-zoom capability and SiriusXM® Traffic and Travel Link®¹ is also part of Ford Co-Pilot360 Assist+. Stay on track in SEL.



2.0L ECOBOOST®
WITH AUTO START-STOP TECHNOLOGY
8-SPEED AUTOMATIC TRANSMISSION

SEL INCLUDES SELECT SE FEATURES, PLUS:

APPEARANCE

Body-color, power, heated sideview mirrors with integrated LED turn signal indicators and security approach lamps
LED signature lighting
LED fog lamps
Silver roof-rack side rails

COMFORT & CONVENIENCE

6-way power front-passenger seat
ActiveX seating surfaces
Auto-dimming rearview mirror
EasyFold rear seat back release
Heated front seats
Leather-wrapped steering wheel
SecuriCode invisible keypad

CONNECTIVITY & ENTERTAINMENT

Premium Audio System with 9 speakers

OPTIONS

Cargo Accessories Package: interior cargo cover, cargo area protector, and rear bumper protector

Class II Trailer Tow Prep Package with Trailer Sway Control (requires AWD)

Cold Weather Package: heated steering wheel, windshield wiper de-icer, and front and rear floor liners

Convenience Package: perimeter alarm; Remote Start System; 110V/150W AC power outlet; universal garage door opener; wireless charging pad; and hands-free, foot-activated liftgate

Ford Co-Pilot360 Assist+: Adaptive Cruise Control with Stop-and-Go and Lane Centering; Evasive Steering Assist; and Voice-Activated Touchscreen Navigation System with pinch-to-zoom capability (includes SiriusXM® Traffic and Travel Link® with 5-year subscription¹)

All-wheel drive (AWD; includes AWD disconnect)

Dual-Headrest Rear Seat Entertainment System^{4,5}

Engine block heater

Front and rear floor liners

Power, panoramic Vista Roof®⁵

Wheel-locking lug nuts



18"
SPLIT-SPOKE SPARKLE SILVER-PAINTED ALUMINUM
Standard



18"
BRIGHT-MACHINED ALUMINUM WITH PREMIUM DARK STAINLESS-PAINTED POCKETS
Optional

ACTIVEX SEATING SURFACES: Dune, Ebony

COLORS: Desert Gold,² Atlas Blue,² Iconic Silver,² Dark Persian Green,² Magnetic,² Agate Black,² Burgundy Velvet Metallic Tinted Clearcoat,³ Oxford White, Star White Metallic Tri-coat,³ Rapid Red Metallic Tinted Clearcoat³

Available equipment shown. ¹Certain restrictions, 3rd-party terms and data rates may apply. See footnote 1 on the "Your Tech, Your Way" pages, and your Ford Dealer for details. ²Metallic. ³Additional charge. ⁴Ford Licensed Accessory. ⁵Restrictions may apply. See your dealer for details.

TITANIUM

- WINDSHIELD WIPER DE-ICER
- HEATED STEERING WHEEL
- ACOUSTIC-LAMINATE FRONT-DOOR GLASS

Go lux inside and out with Edge Titanium. Starting with the ultra-convenient hands-free, foot-activated liftgate and available adaptive LED headlamps with amber turn signals. Inside, amenities include: a 12-speaker B&O Sound System; wireless charging pad; 10-way power, heated, leather-trimmed driver and front-passenger seats; a power-tilt/-telescoping steering column with memory; a 110V/150W AC power outlet; illuminated front door-sill scuff plates; and Blue ambient lighting. Elevate your driving experience with the well-appointed Titanium.



COLORS: Desert Gold;¹ Atlas Blue;¹ Iconic Silver;¹ Dark Persian Green;¹ Magnetic;¹ Agate Black;¹ Burgundy Velvet Metallic Tinted Clearcoat;² Star White Metallic Tri-coat;² Rapid Red Metallic Tinted Clearcoat²



2.0L ECOBOOST®
WITH AUTO START-STOP TECHNOLOGY
8-SPEED AUTOMATIC TRANSMISSION

TITANIUM INCLUDES SELECT SEL FEATURES, PLUS:

FORD CO-PILOT360™ TECHNOLOGY

Forward Sensing System

APPEARANCE

Bright exterior door handle inserts
Illuminated front door-sill scuff plates

COMFORT & CONVENIENCE

10-way power, heated front seats with driver's memory feature
110V/150W AC power outlet
Acoustic-laminate front-door glass
Blue ambient lighting
Hands-free, foot-activated liftgate
Heated steering wheel
Memory feature for sideview mirrors
Perimeter alarm
Power-tilt/-telescoping steering column with memory
Remote Start System
Universal garage door opener
Windshield wiper de-icer
Wireless charging pad

CONNECTIVITY & ENTERTAINMENT

B&O Sound System with 12 speakers, and HD Radio™ Technology

OPTIONS

Equipment Group 301A: all content of Ford Co-Pilot360 Assist+ + perforated leather-trimmed seats, heated and cooled front seats, heated rear outboard seats, and power, panoramic Vista Roof;[®] Enhanced Active Park Assist; front 180-degree camera with Split View and washer; auto-dimming driver's sideview mirror; and adaptive LED headlamps with amber light blade turn signals

Cargo Accessories Package: interior cargo cover, cargo area protector, and rear bumper protector

Class II Trailer Tow Prep Package with Trailer Sway Control (requires AWD)

Ford Co-Pilot360 Assist+: Adaptive Cruise Control with Stop-and-Go and Lane Centering; Evasive Steering Assist; and Voice-Activated Touchscreen Navigation System with pinch-to-zoom capability (includes SiriusXM[®] Traffic and Travel Link[®] with 5-year subscription*)

Titanium Elite Package: See next spread for contents (requires 301A)

All-wheel drive (AWD; includes AWD disconnect)

Dual-Headrest Rear Seat Entertainment System^{3,5}

Engine block heater

Front and rear floor liners

Power, panoramic Vista Roof³

Wheel-locking lug nuts



18"
BRIGHT-MACHINED ALUMINUM WITH PREMIUM DARK STAINLESS-PAINTED POCKETS³
Optional; includes snow chain-compatible tires



19"
LUSTER NICKEL-PAINTED ALUMINUM
Standard



20"
BRIGHT-MACHINED ALUMINUM WITH PREMIUM DARK STAINLESS-PAINTED POCKETS
Optional on 300A



LEATHER-TRIMMED SEATING SURFACES: Medium Soft Ceramic, Ebony

Available equipment shown. ¹Metallic. ²Additional charge. ³Restrictions may apply. See your dealer for details. ⁴Certain restrictions, 3rd-party terms and data rates may apply. See footnote 1 on the "Your Tech, Your Way" pages, and your Ford Dealer for details. ⁵Ford Licensed Accessory.

TITANIUM ELITE

HEATED AND COOLED FRONT SEATS

HEATED REAR OUTBOARD SEATS

B&O SOUND SYSTEM WITH 12 SPEAKERS

Take Titanium to the next level by adding the Titanium Elite Package to Equipment Group 301A. Nearly every driver-assist feature that Edge offers will be yours, including a front 180-degree camera with Split View and washer¹ that provides a cross-traffic view in front of your vehicle, as well as Enhanced Active Park Assist¹ that helps make parallel parking easier. The Titanium Elite Package adds a unique new interior environment with Brunello door-trim inserts with Brick Red stitching, as well as front and rear floor mats with an embroidered Edge logo and accent stitching in Brick Red. Body-color exterior trim with bright chrome inserts, plus 20" polished aluminum wheels, distinguish Titanium Elite even further.



2.0L ECOBOOST®
WITH AUTO START-STOP TECHNOLOGY
8-SPEED AUTOMATIC TRANSMISSION

TITANIUM ELITE PACKAGE INCLUDES SELECT TITANIUM 301A FEATURES, PLUS:

APPEARANCE

- Aluminum instrument panel appliqué
- Body-color cladding with bright chrome inserts
- Body-color front and rear bumpers
- Brunello door-trim inserts
- Ebony seats with Brunello perforated inserts
- Unique front and rear floor mats

OPTIONS

Cargo Accessories Package: interior cargo cover, cargo area protector, and rear bumper protector

Class II Trailer Tow Prep Package with Trailer Sway Control (requires AWD)

All-wheel drive (AWD; includes AWD disconnect)

Dual-Headrest Rear Seat Entertainment System⁴

Engine block heater

Front and rear floor liners



20"
POLISHED ALUMINUM
Standard

LEATHER-TRIMMED SEATING SURFACES: Ebony/Brunello

COLORS: Desert Gold² Iconic Silver² Magnetic² Agate Black² Burgundy Velvet Metallic Tinted Clearcoat³ Star White Metallic Tri-coat³

Available equipment shown. ¹Driver-assist features are supplemental and do not replace the driver's attention, judgment and need to control the vehicle. ²Metallic. ³Additional charge. ⁴Ford Licensed Accessory. Restrictions may apply. See your dealer for details.

ST

ALUMINUM PEDAL COVERS

LEATHER STEERING WHEEL WITH ST LOGO

KEY FOBS WITH FORD PERFORMANCE LOGO

Tuned by the Ford Performance Team, Edge ST charges hard with 335 horsepower¹ and 380 lb.-ft. of torque.¹ A Ford Performance-tuned suspension provides dynamic handling, while standard all-wheel drive (AWD) helps maximize traction. Plus, racing-inspired paddle shifters enhance your control of the 8-speed automatic with SelectShift[®] capability. Tap the Sport mode button to sharpen throttle response, more aggressively program the transmission shift points, and more. A Gloss Black-painted wide-mouth mesh grille, ST badging, and dual trapezoidal exhaust outlets set this Edge apart. Inside, design cues on the steering wheel, front seat backs and more remind you that ST is something special.



2.7L ECOBOOST[®] WITH AUTO START-STOP TECHNOLOGY
8-SPEED AUTOMATIC TRANSMISSION

ST INCLUDES SELECT SEL FEATURES, PLUS:

MECHANICAL

All-wheel drive (AWD; includes AWD disconnect, SelectShift capability, and steering wheel-mounted paddle shifters)
Class II Trailer Tow Prep Package with Trailer Sway Control
Ford Performance-tuned suspension

APPEARANCE

Dual trapezoidal and polished stainless steel exhaust tips
Front and rear door-sill scuff plates with Ford Performance logo
Gloss Black-painted mesh grille with ST logo

COMFORT & CONVENIENCE

10-way power, heated front seats with driver's memory feature
110V/150W AC power outlet
Acoustic-laminate front-door glass
Active noise control
Aluminum brake and accelerator pedal covers
Blue ambient lighting
Bolstered bucket front seats with embossed ST logo
Hands-free, foot-activated liftgate
Memory feature for sideview mirrors
Perforated leather steering wheel with ST logo
Perimeter alarm
Power-tilt/-telescoping steering column with memory
Remote Start System
Universal garage door opener
Wireless charging pad

CONNECTIVITY & ENTERTAINMENT

B&O Sound System with 12 speakers, and HD Radio™ Technology

OPTIONS

Equipment Group 401A: all content of Ford Co-Pilot360™ Assist+ plus heated and cooled front seats, heated rear outboard seats, and power, panoramic Vista Roof;⁴ Enhanced Active Park Assist; front 180-degree camera with Split View and washer; auto-dimming driver's sideview mirror; and adaptive LED headlamps with amber light blade turn signals

Cargo Accessories Package: interior cargo cover, cargo area protector, and rear bumper protector

Cold Weather Package: heated steering wheel, windshield wiper de-icer, and front and rear floor liners

Ford Co-Pilot360 Assist+: Adaptive Cruise Control with Stop-and-Go and Lane Centering; Evasive Steering Assist; and Voice-Activated Touchscreen Navigation System with pinch-to-zoom capability (includes SiriusXM[®] Traffic and Travel Link[®] with 5-year subscription⁵)

ST Performance Brake Package: 21" Premium Gloss Black-painted aluminum wheels, unique front and rear vented brake rotors, performance brake pads, vented brake shields, Colorado Red-painted brake calipers, brushless radiator cooling fan, and Summer-only tires⁶ (requires 401A)

Dual-Headrest Rear Seat Entertainment System^{4,7}

Engine block heater

Front and rear floor liners

Power, panoramic Vista Roof⁴

Wheel-locking lug nuts



20"
BRIGHT-MACHINED ALUMINUM WITH
HIGH-GLOSS BLACK-PAINTED POCKETS
Standard



21"
PREMIUM GLOSS BLACK-PAINTED
ALUMINUM
*Optional; included with
ST Performance Brake Package*

LEATHER-TRIMMED SEATING SURFACES: Ebony



Edge ST ownership grants you special privileges, including an invitation for you and a guest to attend the ST SUV Experience – an experiential performance driving program.

For complete program details, visit www.stsuvexperience.com or contact the Ford

Performance Racing School at 435-27-SPEED (77333).

COLORS: Ford Performance Blue,² Iconic Silver,² Magnetic,² Agate Black,² Star White Metallic Tri-coat,³ Rapid Red Metallic Tinted Clearcoat³

Available equipment shown. ¹Horsepower and torque ratings based on premium fuel per SAE J1349[®] standard. Your results may vary. ²Metallic. ³Additional charge. ⁴Restrictions may apply. See your dealer for details. ⁵Certain restrictions, 3rd-party terms and data rates may apply. See footnote 1 on the "Your Tech, Your Way" pages, and your Ford Dealer for details. ⁶Ford does not recommend using summer tires when temperatures drop to approximately 45°F (7°C) or below (depending on tire wear and environmental conditions), or in snow/ice conditions. If the vehicle must be driven in these conditions, Ford recommends using all-season or snow tires. ⁷Ford Licensed Accessory.



Titanium in Rapid Red Metallic Tinted Clearcoat accessorized with smoked side window deflectors,¹ front and rear molded splash guards, roof-mounted crossbars and cargo box,^{1,2} and wheel lock kit



Rear Seat Entertainment System¹

Interior cargo cover and cargo area protector



Floor liners

Dash cam systems¹

SHOP THE COMPLETE COLLECTION | accessories.ford.com

¹Ford Licensed Accessory. ²Consult owner's manual for details on roof-rack load limits.

New Vehicle Limited Warranty. We want your Ford Edge ownership experience to be the best it can be. Under this warranty, your new vehicle comes with 3-year/36,000-mile bumper-to-bumper coverage, 5-year/60,000-mile Powertrain Warranty coverage, 5-year/60,000-mile safety restraint coverage, and 5-year/unlimited-mile corrosion perforation (aluminum panels do not require perforation) coverage – all with no deductible. Please ask your Ford Dealer for a copy of this limited warranty.

Roadside Assistance. Covers your vehicle for 5 years or 60,000 miles, so you have the security of knowing that help may be only a phone call away should you run out of fuel, lock yourself out of the vehicle or need a winch back to a paved road, a battery jump start or towing. Your Ford Dealer can provide complete details on all of these advantages.

Ford Credit. Get the ride you want. Whether you plan to lease or buy, Ford Credit has the option that's right for you. Ask your Ford Dealer for details or visit us online at ford.com/finance.

Ford Protect™ Extended Service Plans. Whether you purchase or lease your Ford vehicle, insist on genuine Ford Protect extended service plans. Ford Protect has a variety of plans to give you peace-of-mind protection whether you want vehicle component or maintenance coverage. Plus, they are fully backed by Ford and honored at all Ford dealerships in the U.S., Canada and Mexico. When you visit your dealer, insist on genuine Ford Protect extended service plans.

Ford Insure. A new insurance product designed just for Ford owners, Ford Insure can help you save money on auto insurance for your connected Ford vehicle. Drive smarter, become an even better driver and earn bigger discounts – it's a win/win/win. Visit the FordPass mobile app or call 1-833-Ford-183.

American Road Services Company LLC is the licensed insurance agency supporting Ford and Lincoln insurance programs. Ford Insure is underwritten by Nationwide Mutual Insurance Company and Affiliated Companies. Subject to underwriting guidelines, review, and approval. Products not available to all persons in all states. Coverages vary by state. Availability varies; program criteria differs in California.

Ford Original Accessories. They're warranted for whichever provides you the greatest benefit: 24 months/unlimited mileage, or the remainder of your Bumper-to-Bumper 3-year/36,000-mile New Vehicle Limited Warranty.

Ford Licensed Accessories (FLA) are warranted by the accessory manufacturer's warranty. FLA are designed and developed by the accessory manufacturer and have not been designed or tested to Ford Motor Company engineering requirements. Contact your Ford Dealer for details and/or a copy of all limited warranties.

Amazon, Alexa, and all related logos are trademarks of Amazon.com, Inc. or its affiliates. Apple, Apple CarPlay, Apple Watch and iPhone are trademarks of Apple Inc., registered in the U.S. and other countries. App Store is a service mark of Apple Inc. BANG & OLUFSEN and B&O are registered trademarks of Bang & Olufsen Group. Licensed by Harman Becker Automotive Systems Manufacturing Kft. All rights reserved. Google, Android, Google Play, Android Auto, Waze and other marks are trademarks of Google LLC. Requires the Android Auto app on Google Play and an Android compatible smartphone running Android™ 5.0 or higher. HD Radio is a proprietary trademark of iBiquity Digital Corporation. SiriusXM and all related marks and logos are trademarks of Sirius XM Radio Inc.

Comparisons based on competitive models excluding other Ford vehicles (class is Midsize Utilities based on Ford segmentation), publicly available information and Ford certification data at time of release. Vehicles may be shown with optional equipment and without standard antenna. Features may be offered only in combination with other options or subject to additional ordering requirements/limitations. Dimensions shown may vary due to optional features and/or production variability. Information is provided on an "as is" basis and could include technical, typographical or other errors. Ford makes no warranties, representations, or guarantees of any kind, express or implied, including but not limited to, accuracy, currency, or completeness, the operation of the information, materials, content, availability, and products. Ford reserves the right to change product specifications, pricing and equipment at any time without incurring obligations. Your Ford Dealer is the best source of the most up-to-date information on Ford vehicles. Colors are representative only. See your dealer for actual paint/trim options.



BUILT TO KEEP YOU MOVING.™

The FordPass™ App³ puts your Edge owner experience right in the palm of your hand.



COMPLIMENTARY MAINTENANCE

With FordPass Rewards™ you can earn 42,000 Points to use toward complimentary maintenance when you buy or lease a new Ford.⁴ Or save your Points for future service, accessories or even your next new vehicle purchase. And when it's time to schedule service, you can do it right from your FordPass App.



REWARDS

In addition to complimentary maintenance, you can easily earn FordPass Rewards Points for many of the things you already do with us, including service and maintenance at participating dealers. Then you can redeem your Points for discounts on service, parts, accessories and new vehicle purchases. Use your app to watch your Points grow and keep track of how you use them.



ROADSIDE ASSISTANCE

With the FordPass App, you can request roadside assistance like fuel delivery, flat-tire repair and more 24/7 anywhere, anytime.⁵ Just use your app to call or make an e-request and help is on the way.



CONNECT & CONTROL

Stay connected and in control of your vehicle with complimentary remote features accessed through the FordPass App. Start, stop, lock and unlock your vehicle, schedule a start, even check fuel and fluid levels right from the app.⁶ You can also get vehicle health alerts, service history and service alerts to help you keep on top of your vehicle's maintenance.



Download the FordPass app today.

³FordPass App, compatible with select smartphone platforms, is available via a download. Message and data rates may apply. ⁴75,000 points for Diesel owners. Modem must be activated within 60 days of purchase through the FordPass App on a smartphone and remain active for at least 6 months after activation. Buyers of non-modem-equipped vehicles will also receive Points for complimentary maintenance after enrollment. Visit a participating dealer for details. ⁵Roadside assistance is included for certain owners and available to everyone for a per-service fee. ⁶FordPass Connect™ (optional on select vehicles), the FordPass App, and Complimentary Connected Services are required for remote features (see FordPass Terms for details). Connected service and features depend on compatible AT&T network availability. Evolving technology/cellular networks/vehicle capability may limit functionality and prevent operation of connected features. Connected Services exclude Wi-Fi hotspot.



From day one, we had the future in mind. And for over 116 years,
we've focused on improving your freedom of movement,
by making it possible for hardworking, everyday people to own
a vehicle. One that's well built. That you're proud to drive.
Born in Detroit, made in America¹ and famous worldwide:
We are the Ford Motor Company.

Your mobility is at the center of everything we do.
And we're excited to be designing and building smart vehicles
that work for you. It's why we put our family name on every one.
From our founding members, to our Ford family of employees
around the globe, we work with pride. We build with care.
For you – and your family. By everyone in ours.

¹Made in the USA with domestic and foreign parts.