

SONIC 2020

CHEVROLET





# GO LIKE THE WIND.

With its nimble handling and responsive dynamics, Sonic is all about go. Choose from a highly versatile Hatchback or a Sedan with impressively upscale style. Inside, you'll find an info-packed gauge cluster and convenient ways to stay connected. And with a range of available advanced safety technologies and impressive efficiency, you'll enjoy going whichever way the wind blows.

## FIND NEW ROADS™

**Sonic Premier RS Hatchback**  
in Summit White. **Sonic Premier**  
Sedan in Silver Ice Metallic.

<sup>1</sup>The 2016 Chevrolet Sonic received the fewest reported problems in its segment in J.D. Power's 2019 U.S. Vehicle Dependability Study following three years of ownership. See [jdpower.com/awards](http://jdpower.com/awards) for more details.

**J.D. POWER NAMED SONIC**  
"MOST DEPENDABLE SMALL CAR."<sup>1</sup>  
Based on survey of 2016 vehicles.





## MODELS

### LS SEDAN

The 4-door sedan that's all business and all fun.

LS makes sure of that with its standard 138-horsepower ECOTEC® 1.4L DOHC turbocharged 4-cylinder engine paired with a 6-speed automatic transmission.

Standard features include a Rear Vision Camera<sup>1</sup>, StabiliTrak® Electronic Stability Control System and Chevrolet Infotainment 3 system<sup>2</sup>.



### LT SEDAN AND HATCHBACK

Just about everything you need and a whole lot more.

LT Sedan and Hatch include standard cruise control, power windows and power-adjustable heated outside mirrors.

The sporty RS Package is standard on Hatch and available on LT and Premier Sedan. It includes Sport rocker moldings, foglamps, specific wheels and more.



<sup>1</sup> Read the vehicle Owner's Manual for important feature limitations and information. <sup>2</sup> Chevrolet Infotainment System functionality varies by model. Full functionality requires compatible Bluetooth and smartphone, and USB connectivity for some devices.

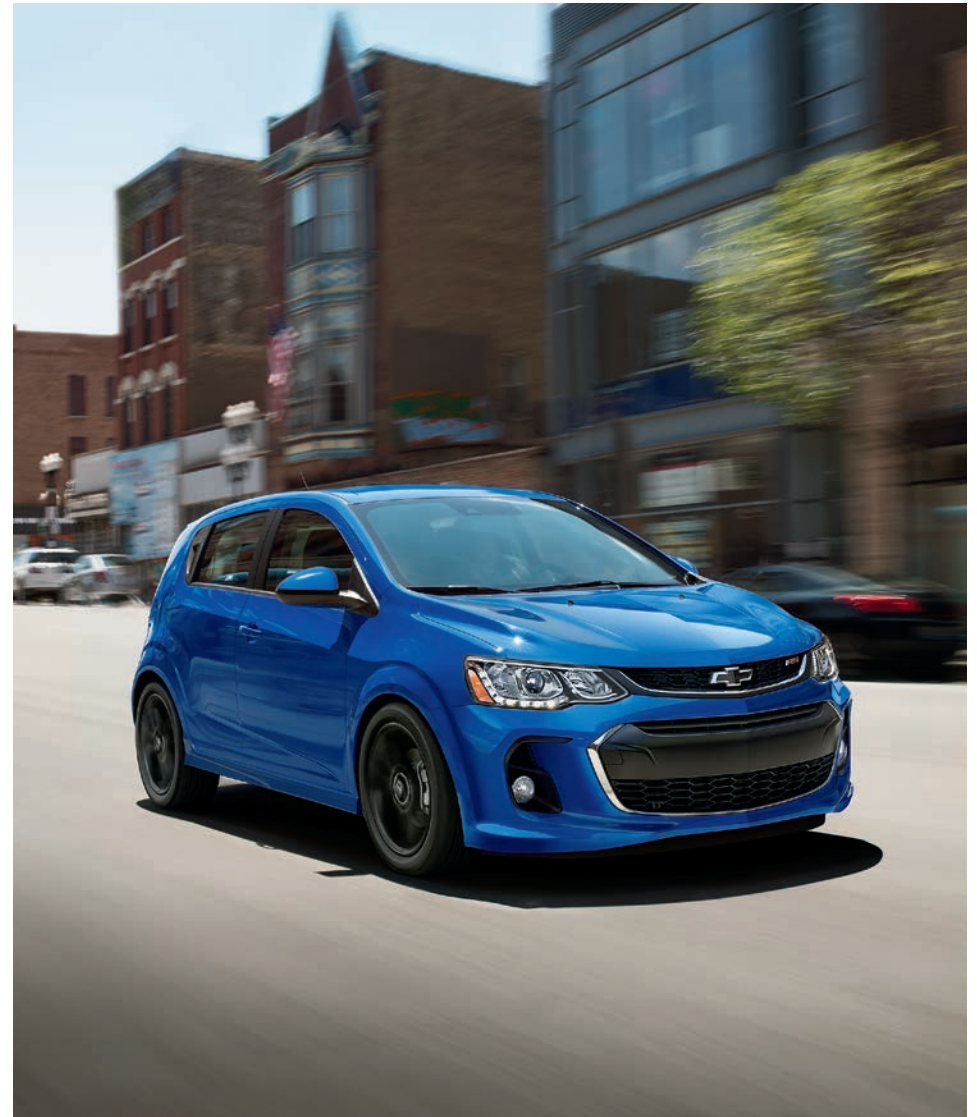
## MODELS

### PREMIER SEDAN AND HATCHBACK

The ultimate Sonic, with impressive credentials and nice-to-have luxuries included.

Premier sets a high standard with specific 17-inch aluminum wheels, Keyless Open and Start and a remote vehicle starter system.

Every Premier offers the comfort of a 6-way power-adjustable driver seat and heated front seats. Jet Black leatherette seats with sueded microfiber inserts are standard on Hatch and available on Sedan.







Sonic Premier Sedan interior in Jet Black with Dark Titanium accents.





## INTERIOR DESIGN

### ROOM FOR YOUR LIFE.

Sonic is designed to let you bring the fun along.

Sonic Sedan has **14.9 cu. ft!** of trunk space, plus the added versatility of standard split-folding rear seats. Sonic Hatch has **19 cu. ft!** of space behind the second row and up to **47.7 cu. ft!** with the rear seats folded down for plenty of versatility on the road.

The Chevrolet Infotainment 3 system<sup>2</sup> is intuitive and easy to use with the 7-inch diagonal color touch-screen display. There's also Apple CarPlay<sup>®3</sup> (shown) and Android Auto<sup>™4</sup> compatibility. And available built-in 4G LTE Wi-Fi<sup>®5</sup> provides a fast and reliable connection for up to seven devices.

An available heated steering wheel<sup>6</sup> provides a good warm grip, perfect on those days when the temperature dips.



<sup>1</sup> Cargo and load capacity limited by weight and distribution. <sup>2</sup> Chevrolet Infotainment System functionality varies by model. Full functionality requires compatible Bluetooth and smartphone, and USB connectivity for some devices. <sup>3</sup> Vehicle user interface is a product of Apple and its terms and privacy statements apply. Requires compatible iPhone and data plan rates apply. <sup>4</sup> Vehicle user interface is a product of Google and its terms and privacy statements apply. Requires the Android Auto app on Google Play and an Android compatible smartphone running Android 5.0 Lollipop or higher. Data plan rates apply. <sup>5</sup> Service varies with conditions and location. Requires active service plan. Data plans offered by AT&T. Visit onstar.com for details and limitations. <sup>6</sup> LT and Premier Sedan only.



Sonic Premier RS Hatchback in  
Kinetic Blue Metallic (extra-cost color).



## PERFORMANCE

# ADVENTURES AWAIT.

- 138-horsepower ECOTEC 1.4L turbocharged engine with an EPA-estimated 34 MPG highway.
- 6-speed automatic transmission.
- Sport suspension. Standard on Premier Hatch, available on Premier Sedan.
- RS Package, standard on Hatch and available on Sedan, includes Sport rocker moldings, foglamps, Black bowtie emblems and a leather-wrapped flat-bottom steering wheel.
- On Premier only, the RS Package includes 17-inch Black-painted aluminum wheels and heated Jet Black leatherette front seats with microfiber inserts and RS lettering.



## SAFETY AND DRIVER ASSISTANCE

### READY AND VIGILANT.



**Forward Collision Alert.** This feature monitors how close your vehicle is to the detected vehicle in front of you and can alert you to a potential crash. Available on LT and Premier.



**Lane Departure Warning.** This camera-based system reads traffic lane markings when identifiable and provides alerts if you unintentionally drift out of your lane without using a turn signal. Available on LT and Premier.



**Rear Vision Camera.** When traveling in Reverse at low speeds, this feature helps provide a view of the area immediately behind your Sonic. Standard on all models.



**Rear Park Assist.** When traveling in Reverse at low speeds, this feature can provide distance alerts when it detects certain stationary objects in close proximity behind the vehicle. Available on LT and Premier.



**StabiliTrak Electronic Stability Control.** This standard system detects the difference between the path being steered and the direction the vehicle is actually traveling. It then uses the brakes and, if necessary, adjusts engine torque to help you keep your Sonic on track.

**OnStar Automatic Crash Response!** In a crash, built-in sensors can automatically alert a specially trained, Emergency-Certified OnStar Advisor<sup>2</sup> who can send help – even if you can't ask for it. Advisors can use GPS technology to pinpoint your vehicle's location for first responders and offer critical assistance until help arrives. OnStar Automatic Crash Response is included in the available OnStar Safety & Security Plan<sup>1</sup>.

**Safety starts with you.** Safety or driver assistance features are no substitute for the driver's responsibility to operate the vehicle in a safe manner. The driver should remain attentive to traffic, surroundings and road conditions at all times. Visibility, weather and road conditions may affect feature performance. Read the vehicle Owner's Manual for more important feature limitations and information.







## SPECIAL FEATURES



Windshield Protector available from Chevrolet Accessories.



Roof Rack Cross Rails available from Chevrolet Accessories.



Available power sunroof with express-open.



17" Silver-Painted Aluminum Wheels available from Chevrolet Accessories.



## EXTERIOR COLORS



Summit White



Silver Ice Metallic



Nightfall Gray Metallic



Red Hot



Cajun Red Tintcoat<sup>1,2</sup>



Cayenne Orange Metallic<sup>1,3</sup>



Oasis Blue<sup>3</sup>



Kinetic Blue Metallic<sup>1</sup>

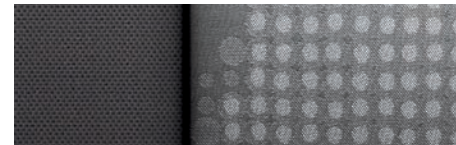


Mosaic Black Metallic

<sup>1</sup> Extra-cost color. <sup>2</sup> Not available on LS Sedan. <sup>3</sup> Available on Hatchback only.



## MODELS



Jet Black Sport Cloth with Dark Titanium Accents



15" Steel Wheels with Painted Wheel Covers  
Standard on LS Sedan

**LS SEDAN** Sonic LS Sedan includes these features:

### MECHANICAL

**Brakes** – 4-wheel antilock, front disc/rear drum with Panic Brake Assist

**Engine** – ECOTEC 1.4L turbocharged DOHC 4-cylinder with Variable Valve Timing (VVT)

**StabiliTrak** – Electronic Stability Control System with Traction Control; includes Hill Start Assist

**Suspension** – Touring

**Transmission** – 6-speed automatic with thumb-controlled gear selection on the shifter

### EXTERIOR

**Daytime running lamps** – LED

**Glass** – solar-absorbing tinted

**Headlamps** – halogen, projector-type, automatic on/off

**Mirrors** – manual-adjustable, manual-folding, body-color

**Moldings** – Black beltline

**Tire** – compact spare

**Tires** – P195/65R15

**Wipers** – front variable-speed intermittent with washers

### INTERIOR

**Air conditioning** – manual, single-zone

**Audio** – 4-speaker system

**Door locks** – power programmable with lockout protection and manual rear door child security

**Driver Information Center**

**Entertainment** – Chevrolet Infotainment 3 system<sup>1</sup> with 7-inch diagonal color touch-screen, AM/FM stereo, Bluetooth<sup>®</sup> audio streaming<sup>2</sup> for two active devices, voice command pass-through to compatible phone, and Apple CarPlay<sup>®3</sup> and Android Auto<sup>™4</sup> compatibility

**Floor mats** – carpeted, front and rear

**Glove boxes** – upper and lower

**Instrument panel accents** – Jet Black

### INTERIOR (CONTINUED)

**Lighting** – front-seat reading lamps, overhead courtesy lamp and rear cargo area lamp

**Media** – two USB ports<sup>5</sup> and auxiliary input jack

**Rear Vision Camera**<sup>6</sup>

**Remote Keyless Entry** – with panic alarm

**Seat** – driver 4-way manual adjuster with armrest

**Seats** – rear, 60/40 split-folding bench

**Steering column** – manual tilt and telescopic

**Steering wheel** – Sport, 3-spoke, with mounted audio and phone controls

**Theft-deterrent system** – engine immobilizer and unauthorized entry

**Tire Pressure Monitor** (does not monitor spare tire)

**Visors** – driver and front passenger, covered vanity mirrors

<sup>1</sup> Chevrolet Infotainment System functionality varies by model. Full functionality requires compatible Bluetooth and smartphone, and USB connectivity for some devices. <sup>2</sup> Go to [my.chevrolet.com/learnAbout/bluetooth](http://my.chevrolet.com/learnAbout/bluetooth) to find out which phones are compatible with the vehicle. Full Bluetooth feature functionality varies by device, model and software version. <sup>3</sup> Vehicle user interface is a product of Apple and its terms and privacy statements apply. Requires compatible iPhone and data plan rates apply. <sup>4</sup> Vehicle user interface is a product of Google and its terms and privacy statements apply. Requires the Android Auto app on Google Play and an Android compatible smartphone running Android 5.0 Lollipop or higher. Data plan rates apply. <sup>5</sup> Not compatible with all devices. <sup>6</sup> Read the vehicle Owner's Manual for important feature limitations and information.



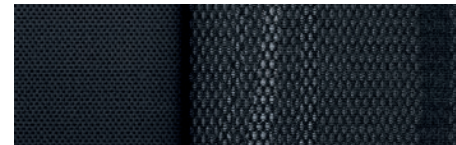
## MODELS (CONTINUED)

● STANDARD ○ AVAILABLE – NOT AVAILABLE



Dark Pewter Deluxe Cloth with Dark Titanium Accents (shown)  
Standard on LT Sedan

Jet Black Deluxe Cloth with Jet Black Accents (shown)  
Standard on LT Hatchback; available on LT Sedan<sup>1</sup>



Jet Black Deluxe Cloth with Dark Titanium Accents  
Standard on LT Sedan



15" Aluminum Wheels  
Standard on LT Sedan



16" Aluminum Wheels  
Standard on LT Hatchback; available on LT Sedan<sup>1</sup>

### LT SEDAN AND HATCHBACK In addition to or replacing LS Sedan features, LT includes:

#### EXTERIOR

	SEDAN	HATCHBACK
Emblems – Black bowtie	○ <sup>1</sup>	●
Foglamps	○ <sup>1</sup>	●
Mirrors – heated, power-adjustable, manual-folding, body-color	●	●
Moldings – chrome beltline	●	●
Moldings – rocker, Sport	○ <sup>1</sup>	●
Spoiler – rear, Sport	–	●
Tires – P205/55R16	○ <sup>1</sup>	●
Wiper – rear intermittent with washer	–	●

#### INTERIOR

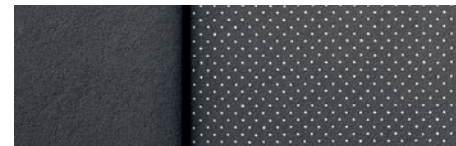
Audio – 6-speaker premium system	●	●
Cargo area – security cover and adjustable shelf floor	–	●
Cruise control – electronic with Set and Resume Speed	●	●
Floor mats – deluxe carpeted, front and rear	○ <sup>1</sup>	●
Instrument panel accents – Graphite Silver Metallic (Sedan); Piano Black (Hatchback)	●	●
Remote vehicle starter system	○ <sup>2</sup>	●
SiriusXM <sup>®3</sup> – All Access Package with 3-month trial subscription	●	●
Steering wheel – Sport, 3-spoke leather-wrapped with contrasting stitching, Black bowtie emblem and flat-bottom design	○ <sup>1</sup>	●
Windows – power with driver and front passenger express-up/-down, all others express-down	●	●

<sup>1</sup> Requires available RS Package. <sup>2</sup> Requires available Convenience Package. <sup>3</sup> If you decide to continue service after your trial, your selected subscription plan will automatically renew thereafter. You will be charged at then-current rates. Fees and taxes apply. Please see the SiriusXM Customer Agreement at [siriusxm.com](http://siriusxm.com) for complete terms and how to cancel, which includes calling SiriusXM at 1-866-635-2349. All fees and programming are subject to change.

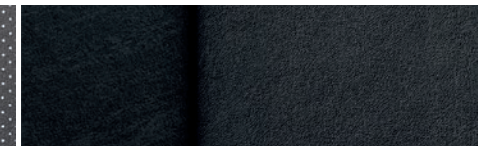


## MODELS (CONTINUED)

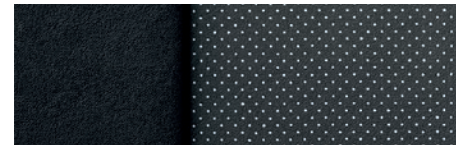
● STANDARD ○ AVAILABLE – NOT AVAILABLE



Dark Pewter Perforated Leatherette with Dark Titanium Accents (shown) Standard on Premier Sedan



Jet Black Leatherette with Sueded Microfiber Inserts (shown) Standard on Premier Hatchback; available on Premier Sedan<sup>1</sup>



Jet Black Perforated Leatherette with Dark Titanium Accents Standard on Premier Sedan

### PREMIER SEDAN AND HATCHBACK In addition to or replacing LT features, Premier includes:

#### MECHANICAL

Suspension – Sport

○<sup>1</sup> ●

#### EXTERIOR

Tires – P205/50R17

● ●

#### INTERIOR

Compass – digital, in Driver Information Center

● ●

Driver Information Center – enhanced

● ●

Floor mats – deluxe carpeted, front and rear

○<sup>1</sup> ●

Keyless Open and Start

● ●

Remote vehicle starter system

● ●

Seat – driver 6-way power adjuster

● ●

Seats – heated, driver and front passenger

● ●

Steering wheel – heated 3-spoke leather-wrapped

● –

SEDAN  
HATCHBACK



17" Painted-Aluminum Wheels  
Standard on Premier Sedan



17" Black-Painted Aluminum Wheels  
Standard on Premier Hatchback;  
available on Premier Sedan<sup>1</sup>

<sup>1</sup> Requires available RS Package.



## SPECIFICATIONS

● STANDARD ○ AVAILABLE – NOT AVAILABLE

	LS SEDAN	LT SEDAN	LT HATCHBACK	PREMIER SEDAN	PREMIER HATCHBACK
<b>EXTERIOR</b>					
Foglamps (requires available RS Package on LT and Premier Sedan)	–	○	●	○	●
Moldings: Rocker, Sport (requires available RS Package on LT and Premier Sedan)	–	○	●	○	●
Spoiler: Rear, integrated decklid (requires available RS Package on LT and Premier Sedan)	–	○	–	○	–
Rear, Sport	–	–	●	–	●
<b>ENGINE/CHASSIS</b>					
Engine: ECOTEC 1.4L turbocharged DOHC 4-cylinder with Variable Valve Timing (VVT); 138 hp @ 4900 rpm, 148 lb.-ft. of torque @ 1850 rpm	●	●	●	●	●
Suspension: Touring	●	●	●	●	–
Sport (requires available RS Package on Premier Sedan)	–	–	–	○	●
Transmission: 6-speed automatic, electronically controlled with overdrive	●	●	●	●	●
<b>SAFETY</b>					
Airbags: <sup>1</sup> Frontal and knee airbags for driver and front passenger; seat-mounted side-impact and head-curtain airbags for all outboard seating positions; includes front Passenger Sensing System for frontal passenger airbag	●	●	●	●	●
Forward Collision Alert <sup>2</sup> (requires available Driver Confidence Package)	–	○	○	○	○
Lane Departure Warning <sup>2</sup> (requires available Driver Confidence Package)	–	○	○	○	○
LATCH system (Lower Anchors and Tethers for Children), for child restraint systems	●	●	●	●	●
Rear Park Assist <sup>2</sup> (requires available Driver Confidence Package)	–	○	○	○	○
Rear Vision Camera <sup>2</sup>	●	●	●	●	●
Theft-deterrent system: Unauthorized entry	●	●	●	●	●
1 month of OnStar Safety & Security Plan coverage; <sup>3</sup> which includes Automatic Crash Response, Emergency Services, Crisis Assist, Stolen Vehicle Assistance, Roadside Assistance and Turn-by-Turn Navigation <sup>4</sup>	●	●	●	●	●

	LS SEDAN	LT SEDAN	LT HATCHBACK	PREMIER SEDAN	PREMIER HATCHBACK
<b>INTERIOR</b>					
Compass display (requires available Convenience Package on LT)	–	○	○	●	●
Driver Information Center: With trip odometer, fuel range, average fuel economy and average vehicle speed	●	●	●	–	–
Enhanced (requires available Convenience Package on LT)	–	○	○	●	●
Floor mats: Carpeted, front and rear	●	●	–	●	–
Deluxe carpeted, front and rear (requires available RS Package on LT and Premier Sedan)	–	○	●	○	●
Instrument panel accents: Jet Black	●	–	–	–	–
Graphite Silver Metallic	–	●	–	●	–
Piano Black (requires available RS Package on LT and Premier Sedan)	–	○	●	○	●
Remote Keyless Entry: With panic alarm	●	●	●	–	–
Keyless Open and Start (requires available Convenience Package on LT)	–	○	○	●	●
Remote vehicle starter system (requires available Convenience Package on LT Sedan)	–	○	●	●	●
Steering wheel: Heated, 3-spoke leather-wrapped (requires available Convenience Package on LT Sedan)	–	○	–	●	–
Sport, 3-spoke leather-wrapped with contrasting stitching, Black bowtie emblem and flat-bottom design (requires available RS Package on LT and Premier Sedan)	–	○	●	○	●
Sunroof: Power with sunshade	–	○	○	○	○

<sup>1</sup> A NOTE ON CHILD SAFETY: Always use seat belts and the correct child restraint for your child's age and size, even with airbags. Even in vehicles equipped with the Passenger Sensing System, children are safer when properly secured in a rear seat in the appropriate infant, child or booster seat. Never place a rear-facing infant restraint in the front seat of any vehicle equipped with an active frontal airbag. See your vehicle Owner's Manual and the child safety seat instructions for more safety information. <sup>2</sup> Read the vehicle Owner's Manual for important feature limitations and information. <sup>3</sup> OnStar plan, working electrical system, cell reception and GPS signal required. OnStar links to emergency services. Not all vehicles may transmit all crash data. Roadside services provided by Allstate Roadside Services for vehicles only. Limitations and restrictions apply. Stolen Vehicle Assistance requires armed GM factory-installed theft-deterrent system, contact method on file and enrollment to receive alerts. Services are intended to assist with vehicle recovery and do not prevent theft or protect against damage or loss. Visit onstar.com for details and limitations. Availability subject to change. <sup>4</sup> Advisor-based Turn-by-Turn Navigation is subject to User Terms and limitations, and varies by vehicle model. Map coverage available in the United States, Puerto Rico and Canada.



## SPECIFICATIONS (CONTINUED)

● STANDARD ○ AVAILABLE – NOT AVAILABLE

	LS SEDAN	LT SEDAN	LT HATCHBACK	PREMIER SEDAN	PREMIER HATCHBACK
<b>SEATING</b>					
Seats: Front bucket	●	●	●	●	●
Rear, 60/40 split-folding	●	●	●	●	●
Seat: Driver 4-way manual adjuster	●	●	●	–	–
Driver 6-way power adjuster (requires available Convenience Package on LT)	–	○	○	●	●
Heated driver and front passenger seats (requires available Convenience Package on LT)	–	○	○	●	●
<b>ENTERTAINMENT</b>					
Chevrolet Infotainment 3 system <sup>1</sup> with 7-inch diagonal color touch-screen, AM/FM stereo, Bluetooth <sup>®</sup> audio streaming <sup>2</sup> for two active devices, voice command pass-through to compatible phone, and Apple CarPlay <sup>®3</sup> and Android Auto <sup>™4</sup> compatibility	●	●	●	●	●
SiriusXM <sup>®5</sup> All Access Package with 3-month trial subscription	–	●	●	●	●
4G LTE Wi-Fi <sup>®6</sup> Hotspot for up to seven devices, includes 1 month or 3 GB of data (whichever comes first)	●	●	●	●	●
Chevrolet Connected Access <sup>7</sup> with 10 years of standard connectivity, which currently enables features such as Vehicle Diagnostics and Dealer Maintenance Notification	●	●	●	●	●

	LS SEDAN	LT SEDAN	LT HATCHBACK	PREMIER SEDAN	PREMIER HATCHBACK
<b>PACKAGES</b>					
Convenience Package	–	○	○	–	–
Heated driver and front passenger seats, 6-way power driver seat adjuster, Keyless Open and Start, two spare keys, enhanced Driver Information Center and compass display; includes heated 3-spoke leather-wrapped steering wheel and remote vehicle starter system on LT Sedan	–	○	○	○	○
Driver Confidence Package	–	○	○	○	○
Forward Collision Alert <sup>8</sup> , Lane Departure Warning <sup>8</sup> and Rear Park Assist <sup>8</sup> (requires available Convenience Package on LT)	–	○	○	○	○
RS Package	–	○	●	○	●
Sport body kit with Sport rocker moldings, foglamps, Black bowtie emblems, integrated decklid rear spoiler on Sedan, Piano Black instrument panel accents, Sport 3-spoke leather-wrapped flat-bottom steering wheel with contrasting stitching, and deluxe carpeted front and rear floor mats; includes 16" aluminum wheels and P205/55R16 tires on LT Sedan; includes Sport suspension and 17" Black-painted aluminum wheels on Premier Sedan	–	○	●	○	●

<sup>1</sup> Chevrolet Infotainment System functionality varies by model. Full functionality requires compatible Bluetooth and smartphone, and USB connectivity for some devices. <sup>2</sup> Go to [my.chevrolet.com/learnAbout/bluetooth](http://my.chevrolet.com/learnAbout/bluetooth) to find out which phones are compatible with the vehicle. Full Bluetooth feature functionality varies by device, model and software version. <sup>3</sup> Vehicle user interface is a product of Apple and its terms and privacy statements apply. Requires compatible iPhone and data plan rates apply. <sup>4</sup> Vehicle user interface is a product of Google and its terms and privacy statements apply. Requires the Android Auto app on Google Play and an Android compatible smartphone running Android 5.0 Lollipop or higher. Data plan rates apply. <sup>5</sup> If you decide to continue service after your trial, your selected subscription plan will automatically renew thereafter. You will be charged at then-current rates. Fees and taxes apply. Please see the SiriusXM Customer Agreement at [siriusxm.com](http://siriusxm.com) for complete terms and how to cancel, which includes calling SiriusXM at 1-866-635-2349. All fees and programming are subject to change. <sup>6</sup> Service varies with conditions and location. Requires active service plan. Data plans offered by AT&T. Visit [onstar.com](http://onstar.com) for details and limitations. Availability subject to change. <sup>7</sup> Standard connectivity available only to original purchaser for 10 years. Services enabled by Connected Access are subject to change. Does not include emergency or security services. Diagnostic capabilities vary by model and service plan. Message and data rates may apply. Requires contact method on file and enrollment to receive alerts. Not all issues will deliver alerts. Visit [onstar.com](http://onstar.com) for details and limitations. <sup>8</sup> Read the vehicle Owner's Manual for important feature limitations and information.



## DIMENSIONS

	HATCHBACK	SEDAN
Length	159.8"	173.9"
Wheelbase	99.4"	99.4"
Height	59.7" (LT), 59.3" (Premier)	59.7"

	HATCHBACK	SEDAN
Width	68.3"	68.3"
Front Track	59.4"	59.4"
Rear Track	59.4"	59.4"

	HATCHBACK	SEDAN
Head Room (front/rear)	38.7"/38.1"	38.7"/37.8"
Leg Room (front/rear)	41.8"/34.6"	41.8"/34.6"
Shoulder Room (front/rear)	53.4"/53.0"	53.4"/53.0"

## MAXIMUM CAPACITIES

Fuel tank (approximate)	12.2 gallons
Passenger volume	90.6 cubic feet/seats 5 (Hatchback) 90.4 cubic feet/seats 5 (Sedan)
Cargo volume <sup>1</sup>	47.7 cubic feet (Hatchback) 14.9 cubic feet (Sedan)



Experience Chevrolet Complete Care, a comprehensive coverage, warranty and protection program that comes standard with every new 2020 Chevrolet Sonic lease and purchase. Simply, it is designed around you, to make it easy to keep your Chevrolet like new – and give you the confidence you deserve when you need it most.

## EPA-ESTIMATED FUEL ECONOMY

ECOTEC 1.4L turbocharged 4-cylinder	26 MPG city/34 highway/29 combined
-------------------------------------	------------------------------------

### Your comprehensive owner benefit program.

Includes one maintenance visit (oil change, tire rotation and multi-point vehicle inspection)?

5 years/60,000 miles<sup>3</sup> of Roadside Assistance<sup>4</sup> and Courtesy Transportation.

3-year/36,000-mile<sup>3</sup> Bumper-to-Bumper Limited Warranty.

5-year/60,000-mile<sup>3</sup> Powertrain Limited Warranty.

6 years/100,000 miles<sup>3</sup> of Rust-Through Protection.

Chevrolet Connected Access<sup>5</sup> with 10 years of standard connectivity, which currently enables features such as Vehicle Diagnostics and Dealer Maintenance Notification.

1 month of Chevrolet Connected Services<sup>6</sup> and 1 month of OnStar Safety & Security Plan coverage<sup>6</sup>

## NEW VEHICLE LIMITED WARRANTY

**3-year/36,000-mile Bumper-to-Bumper Limited Warranty.** Chevrolet will warrant each 2020 Sonic from bumper to bumper for 3 years/36,000 miles (whichever comes first; see dealer for details), with no deductible, from the original in-service date of the vehicle, for warrantable repairs that are required as a result of defects due to materials and/or workmanship. Cosmetic corrosion resulting from defects is also covered under the Bumper-to-Bumper Limited Warranty. In addition, rust-through corrosion will be covered for 6 years/100,000 miles (whichever comes first). See dealer for details.

**5-year/60,000-mile transferable Powertrain Limited Warranty.** Every 2020 Sonic comes with a 5-year/60,000-mile (whichever comes first) transferable Powertrain Limited Warranty. 24/7 Roadside Assistance and Courtesy Transportation are also offered for the duration of the Powertrain Limited Warranty. Please see your Chevrolet dealer for details.

<sup>1</sup> Cargo and load capacity limited by weight and distribution. <sup>2</sup> Maintenance visit must occur within first year of vehicle delivery. Service visit consists of ACDelco dexos1™ Full Synthetic Oil and Filter Change/Tire Rotation/MPVI. Does not include air filters. See participating dealer for other restrictions and complete details. <sup>3</sup> Whichever comes first. See dealer for details. <sup>4</sup> Roadside service provided by Allstate Roadside Services. Limitations apply. <sup>5</sup> Standard connectivity available only to original purchaser for 10 years. Services enabled by Connected Access are subject to change. Does not include emergency or security services. Diagnostic capabilities vary by model and service plan. Message and data rates may apply. Requires contact method on file and enrollment to receive alerts. Not all issues will deliver alerts. Visit onstar.com for details and limitations. <sup>6</sup> Connected services include navigation services and Remote Access Plan. Services subject to terms and limitations. Certain services require working electrical system, cell reception and GPS signal. OnStar links to emergency services. Visit onstar.com for details. Availability subject to change.



## IMPORTANT INFORMATION

**Chevrolet Owner Center (my.chevrolet.com).** Everything you need to know. Anything you need to do. Your Chevrolet Owner Center makes it easy. Create your account today to get the most out of your new vehicle. Get special alerts and offers, schedule service, review your maintenance schedule, and view how-to videos specifically for your vehicle. All online, anytime. Visit the Owner Center today to register or take a tour.

**Engines.** Chevrolet products are equipped with engines produced by GM Global Propulsion Systems or other suppliers to GM worldwide. The engines in Chevrolet products may also be used in other GM makes and models.

**Assembly.** Chevrolet vehicles and their components are assembled or produced by different operating units of General Motors, its subsidiaries or suppliers to GM worldwide. We sometimes find it necessary to produce Chevrolet vehicles with different or differently sourced components than originally scheduled. Since some options may be unavailable when your vehicle is assembled, we suggest you verify that your vehicle includes the equipment you ordered and that, if there were changes, they are acceptable to you.

**Chevrolet Connected Services and OnStar.** Connected vehicle services vary by vehicle model and require an active service plan, working vehicle electrical system (including battery), cell reception and GPS signal to function properly. Visit onstar.com for details and limitations.

**A note on child safety.** Always use seat belts and the correct child restraint for your child's age and size, even with airbags. Even in vehicles equipped with the Passenger Sensing System, children are safer when properly secured in a rear seat in the appropriate infant, child or booster seat. Never place a rear-facing infant restraint in the front seat of any vehicle equipped with an active frontal airbag. See your vehicle Owner's Manual and the child safety seat instructions for more safety information.

**Important words about this catalog.** We have tried to make this catalog comprehensive and factual. We reserve the right, however, to make changes at any time, without notice, in prices, colors, materials, equipment, specifications, models and availability. Specifications,

dimensions, measurements, ratings and other numbers in this catalog and other printed materials provided at the dealership or affixed to vehicles are approximations based on design and engineering drawings, prototypes and laboratory tests. Your vehicle may differ due to variations in manufacture and equipment. Since some information may have been updated since the time of printing, please check with your Chevrolet dealer for complete details. Chevrolet reserves the right to lengthen or shorten the model year for any product for any reason or to start and end model years at different times. Certain vehicle features may lose their usefulness over time due to obsolescence from technological changes. Unless otherwise noted, all claims based on GM Small Car segment and latest available competitive information. Excludes other GM vehicles.

**Fleet orders.** Some standard content may be deleted on fleet orders. See dealer for details.

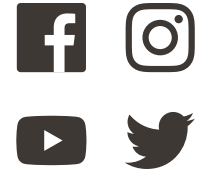
**Chevrolet ownership experience.** Chevrolet is committed to enhancing the vehicle shopping and ownership experience through a wide array of programs. Visit chevrolet.com to build and price, find a vehicle, request a quote, compare vehicles, find financial tools or track your vehicle order. You'll also find information about 24-hour Roadside Assistance, Courtesy Transportation, Customer Assistance, GM Mobility, safety and current incentives.

**Chevrolet.com/safety.** Chevrolet is committed to keeping you and your family safe – from the start of your journey to your destination. That's why every Chevrolet is designed with a comprehensive list of safety and security features to help give you peace of mind.

**GMmobility.com (1-800-323-9935).** GM Mobility<sup>SM</sup> offers financial assistance for eligible adaptive equipment to make automotive travel easier for persons with disabilities or special transportation needs. To learn more about special GM Mobility offers, visit gmmobility.com.

**The BuyPower Card.** The Chevrolet BuyPower Card – Every purchase you make with the BuyPower Card from Capital One\* helps you earn toward an eligible new Chevrolet, Buick, GMC or Cadillac vehicle. There's no limit on the amount you can earn or redeem, and your Earnings don't expire. Visit chevroletbuypowercard.com/catalogs.

\* Capital One, N.A. is the issuer of the BuyPower Card. General Motors ("GM") is responsible for the operation and administration of the Earnings program.



GM, the GM logo, Chevrolet, the Chevrolet logo, and the slogans, emblems, vehicle model names, vehicle body designs and other marks appearing in this catalog are the trademarks and/or service marks of General Motors, its subsidiaries, affiliates or licensors. ©2019 OnStar LLC. All rights reserved. Sirius, XM, SiriusXM and all related marks and logos are trademarks of Sirius XM Radio Inc. The Bluetooth word mark is a registered trademark owned by Bluetooth SIG, Inc., and any use of such mark by Chevrolet is under license.

©2019 General Motors. All rights reserved. July 2019



FIND NEW ROADS™

CHEVROLET.COM

