

# 2019 Pilot







This is where it begins. Where their goals become yours too. You're still driven, but how you get there is about to change.



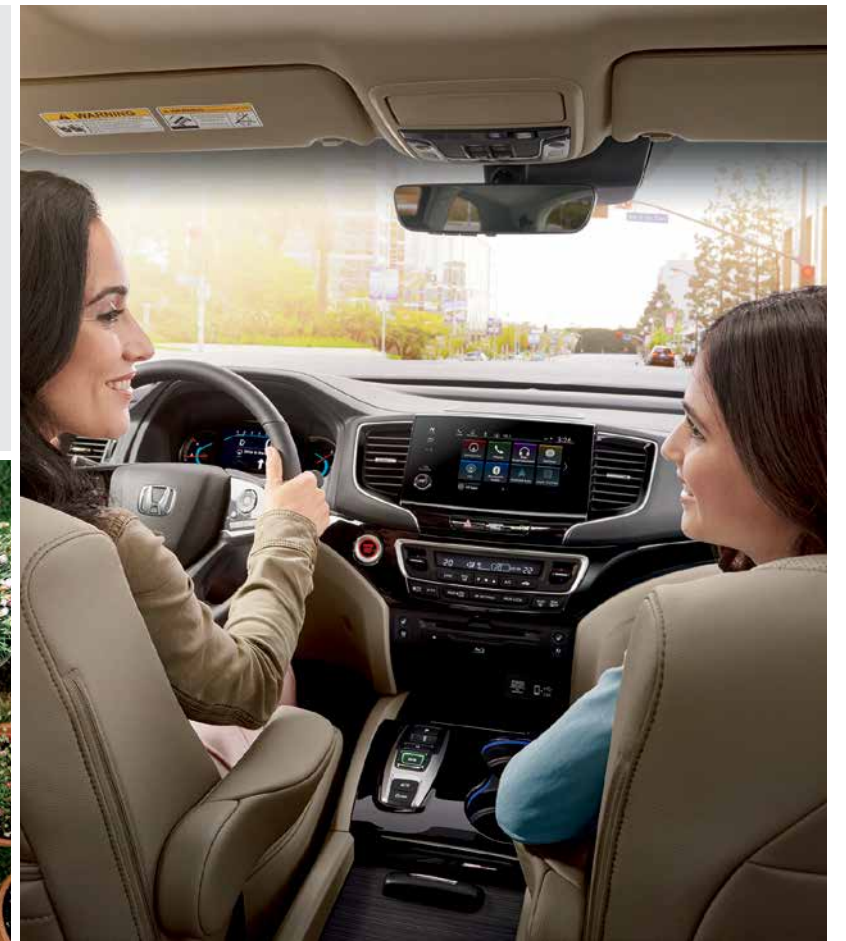
- Overview 02
- Exterior/Black Edition 04
- Interior 06
- Versatility/Performance & Efficiency 08
- Technology 10
- HondaLink™ and Advanced Connectivity 12
- Honda Sensing™ Technologies 14
- Safety 16
- Accessories 20
- Colour and Trim 24
- Specifications 26
- Warranty 30
- The Power of Dreams 32







Forget sacrificing style for space. The 2019 Pilot features bold, sculpted lines, and more cargo space than Dad's shorts.



## Settling down doesn't mean having to settle.

Journeymen, meet the 2019 Pilot – the Honda paragon of utility and efficiency. Equipped with the Earth Dreams™ engine and available idle-stop, the Pilot is as smart as it is stylish. Its roomy interior seats up to eight passengers,<sup>1</sup> and third-row access is a breeze using the available one-touch second row seats. Plus, its cargo capacity makes any packing list just about limitless. Honda Sensing™ safety technologies come standard, so you'll take confidence with you on every trip. With a sophisticated interior inside the modern, sleek exterior, you won't just catch attention – you'll ride comfortably at the centre of it. The 2019 Pilot is confident, bold and ready for anything. Are you?

**Key features:** Honda Sensing™ Technologies, Apple CarPlay™<sup>2,3</sup>/Android Auto,<sup>2,3</sup> Intelligent Variable Torque Management (i-VTM4™) AWD system, Available seating for up to 8,<sup>1</sup> Available Satellite-Linked Navigation System,<sup>2,4</sup> Available Advanced Rear Entertainment System with Blu-ray™ player

1. Seven passengers on the seven-passenger Touring and Black Edition models with second-row captain's chair.  
 2. None of the features we describe are intended to replace the driver's responsibility to exercise due care while driving. Drivers should not use handheld devices or operate certain vehicle features unless it is safe and legal to do so. Some features have technological limitations. For additional feature information, limitations and restrictions, please visit [www.honda.ca/disclaimers](http://www.honda.ca/disclaimers) and refer to the vehicle's Owner's Manual.  
 3. Only compatible with certain devices and operating systems. Operation may be dependent upon: 1. GPS satellite signal reception and available cellular data and/or voice connection; or 2. connection to vehicle's built-in Wi-Fi hotspot, if applicable. Associated charges (incl. data plans, roaming charges or other amounts charged by your wireless carrier) may apply.  
 4. Map database covers major metropolitan areas in Canada and the 48 contiguous U.S. states.





Every inch a rebel. The Black Edition Pilot features red ambient lighting that puts the spotlight directly on your taillights.



## This Pilot is a bit of a maverick.

In the 2019 Pilot, you can either take the scenic route, or you can be the scene itself. In addition to its sleek body, the 18" aluminum-alloy wheels, the LED daytime running lights and the LED taillights blend style with function. And while others stare, you'll see more clearly thanks to the multi-angle rearview camera<sup>1</sup> with dynamic guidelines.

Want to give the smooth, sculpted styling of your Pilot a little more edge? Exclusive to Canada, the Black Edition Pilot brings the attitude, and everything else you'll need. 20" black aluminum-alloy wheels, a gloss black finish front grille bar and black door handles bring a refined, yet assertive exterior to life, while Black Edition seat stitching and floor mats ensure the interior is a sight to behold, and be envied.

**Key Features:** LED headlights with auto-on/off, LED daytime running lights, Available LED fog lights, Available 20" aluminum-alloy wheels, Available roof rails

1. None of the features we describe are intended to replace the driver's responsibility to exercise due care while driving. Drivers should not use handheld devices or operate certain vehicle features unless it is safe and legal to do so. Some features have technological limitations. For additional feature information, limitations and restrictions, please visit [www.honda.ca/disclaimers](http://www.honda.ca/disclaimers) and refer to the vehicle's Owner's Manual.

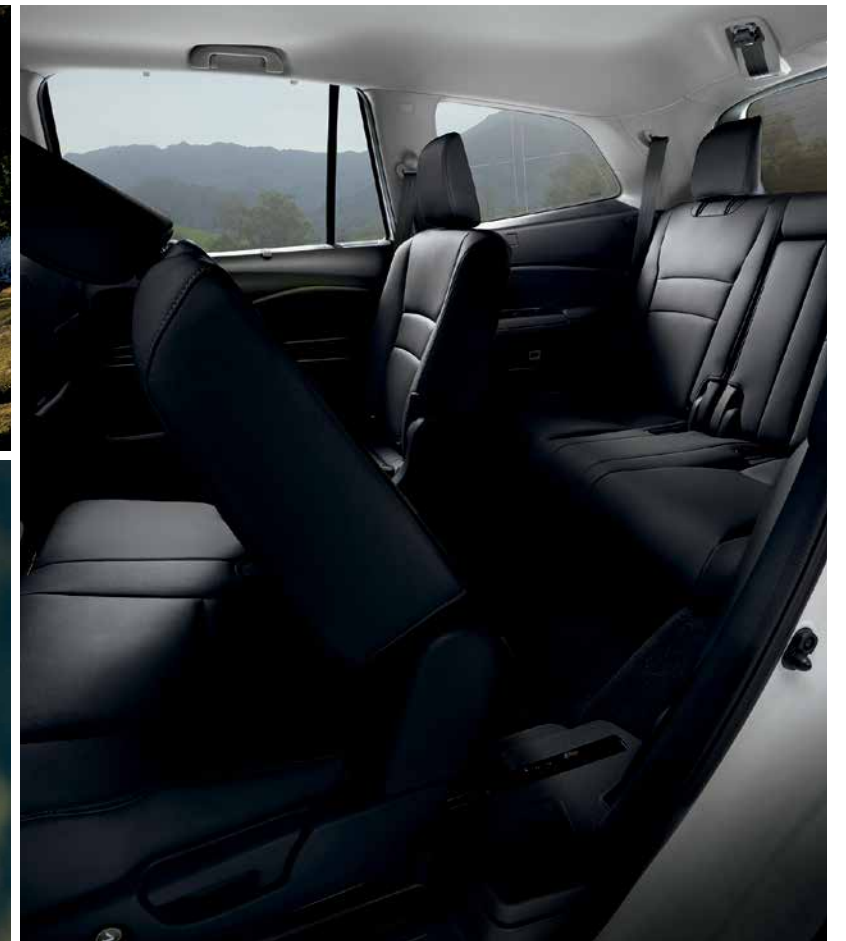


Accessorized model shown.





Plus room for one more.  
With the all-new 8-passenger  
Touring trim, you can open up  
another set of eyes.



## Suddenly, every trip is an all-inclusive.

The interior of the 2019 Pilot surrounds you and your passengers in sophistication thanks to the available interior ambient lighting and soft-touch dash and door materials. And with the available perforated leather-trimmed seating surfaces and the available leather-wrapped steering wheel, every ride is steeped in refinement. While the available panoramic moonroof brightens the cabin, the heated front seats and available heated second-row outboard seats make it even cozier to ride in. When comfort meets style, the Pilot makes every ride worth savouring.

**Key Features:** Remote engine starter, Driver's seat with available 10-way power adjustment including power lumbar support, Proximity key entry system and pushbutton start, Tri-zone automatic climate control, Available panoramic moonroof, Available memory-linked side mirrors and driver's seat position





Convenience with a kick. With the available power tailgate with hands-free access, never get caught holding the bag, box, or bike again.

## Performance that fits your life.

The 2019 Pilot has room for up to eight passengers (seven on the seven-passenger Touring and Black Edition models with second-row captain's chairs) and includes effortless third-row access using the available one-touch second row seats. When you need to load gear, groceries or goodies, the Pilot is up to the task with easy fold-down 60/40 split-folding rear seats in both the second and third row. Plus, the rear cargo boasts ample space, easily fitting a 77.6-litre (82-quart) cooler.

From what's inside to what's under the hood, with the Earth Dreams™ technology engine, the 2019 Pilot is designed to enhance fuel efficiency ratings without sacrificing performance. And to help every litre go further, the Variable Cylinder Management® (VCM®) system is designed to automatically switch between 6 and 3 cylinders, depending on the driving conditions. When you're ready to ride, the Pilot has enough stop and go to handle the ups, downs and turns that virtually any trip can offer.

**Key Versatility Features:** 8 passenger seating (7 passenger seating on 7-passenger Touring and Black Edition models), 60/40 split-folding second-row and third-row seats, Reversible cargo lid with hidden cargo mode, Centre console with smartphone sliding tray, Available one-touch second row seats

**Key Performance Features:** 3.5-litre, 24-valve, Direct Injection, SOHC, i-VTEC® V6 engine with Variable Cylinder Management® (VCM®), 280 horsepower<sup>1</sup> and 262 lb.-ft of torque,<sup>1</sup> 1,588 kg or available 2,268 kg towing capacity<sup>2</sup>, 6-speed or available 9-speed automatic transmission, Intelligent Variable Torque Management (i-VTM4™) AWD system, Intelligent Traction Management system, Available steering wheel-mounted paddle shifters, Available idle-stop technology

1. Horsepower and torque calculations reflect SAE net, Rev. 08/04, SAE J1349 procedures.

2. Accessory towing packages required, available at an additional cost as a dealer-installed item. See your Owner's Manual for proper towing operation.







## Get their show on the road.

A road trip is the perfect way to unwind, sightsee, and get lost in the moment. And the Pilot is a multitasker loaded with sophisticated tech features designed to get you on your way, without losing your way.

With Apple CarPlay™<sup>1,2</sup> and Android Auto™<sup>1,2</sup> your Pilot has the soul of a smartphone. The available Honda Satellite-Linked Navigation System™<sup>1,3</sup> lets you plan as you go with arrival time and lane guidance, while the available Honda LaneWatch™ blind spot display<sup>1</sup> helps you to keep more of your right side in sight. And no matter where your outing takes you, keep the gang entertained with the available Advanced Rear Entertainment System with Blu-ray™ player and 10.2-inch screen.

1. None of the features we describe are intended to replace the driver's responsibility to exercise due care while driving. Drivers should not use handheld devices or operate certain vehicle features unless it is safe and legal to do so. Some features have technological limitations. For additional feature information, limitations and restrictions, please visit [www.honda.ca/disclaimers](http://www.honda.ca/disclaimers) and refer to the vehicle's Owner's Manual.  
 2. Only compatible with certain devices and operating systems. Operation may be dependent upon: 1. GPS satellite signal reception and available cellular data and/or voice connection; or 2. connection to vehicle's built-in Wi-Fi hotspot, if applicable. Associated charges (incl. data plans, roaming charges or other amounts charged by your wireless carrier) may apply.  
 3. Map database covers major metropolitan areas in Canada and 48 contiguous U.S. states.



Apple CarPlay™<sup>1,2</sup>/Android Auto™<sup>1,2</sup>



Available CabinTalk™ in-car PA



Multi-angle rearview camera<sup>1</sup> with dynamic guidelines



Available Blind Spot Information (BSI) system<sup>1</sup> with Rear Cross Traffic Monitor<sup>1</sup> system



Available Display Audio System<sup>1</sup> with Honda Satellite-Linked Navigation System™<sup>1,3</sup> and bilingual Voice Recognition



Available Advanced Rear Entertainment System with 10.2-inch display

# Peace of mind in the palm of your hand.

The Pilot is just as tech-savvy as you. The available HondaLink™ Subscription Services help connect you to a world of features both inside and outside of your vehicle, while other available apps and features are designed to entertain and inform.

## HondaLink™<sup>1,2,3</sup> Subscription Services



### Remote Door Lock/Unlock

Whether you're locked out or forgot to lock up, count on quick, keyless entry and remote assurance from almost anywhere.



### Geofence Alert

Get notified when your car enters or leaves a designated region.



### Stolen Vehicle Locator

Designed to help recover your stolen vehicle faster. The system uses sophisticated technology to assist the authorities with attempting to find your vehicle.



### Auto Collision Notification (ACN)

In the event of an accident, a Response Agent automatically checks in and helps send emergency care, even when passengers aren't able to respond.

## Advanced Connectivity



### AT&T Wi-Fi Hotspot

Connect up to seven compatible devices with your vehicle's available built-in Wi-Fi hotspot.<sup>2,4</sup> Enjoy up to 4G LTE speeds on multiple devices. From the open road, you'll be able to stream hours of videos, play games, get real-time email access and surf the web. You'll be able to stay connected up to 50 feet away from your Pilot.



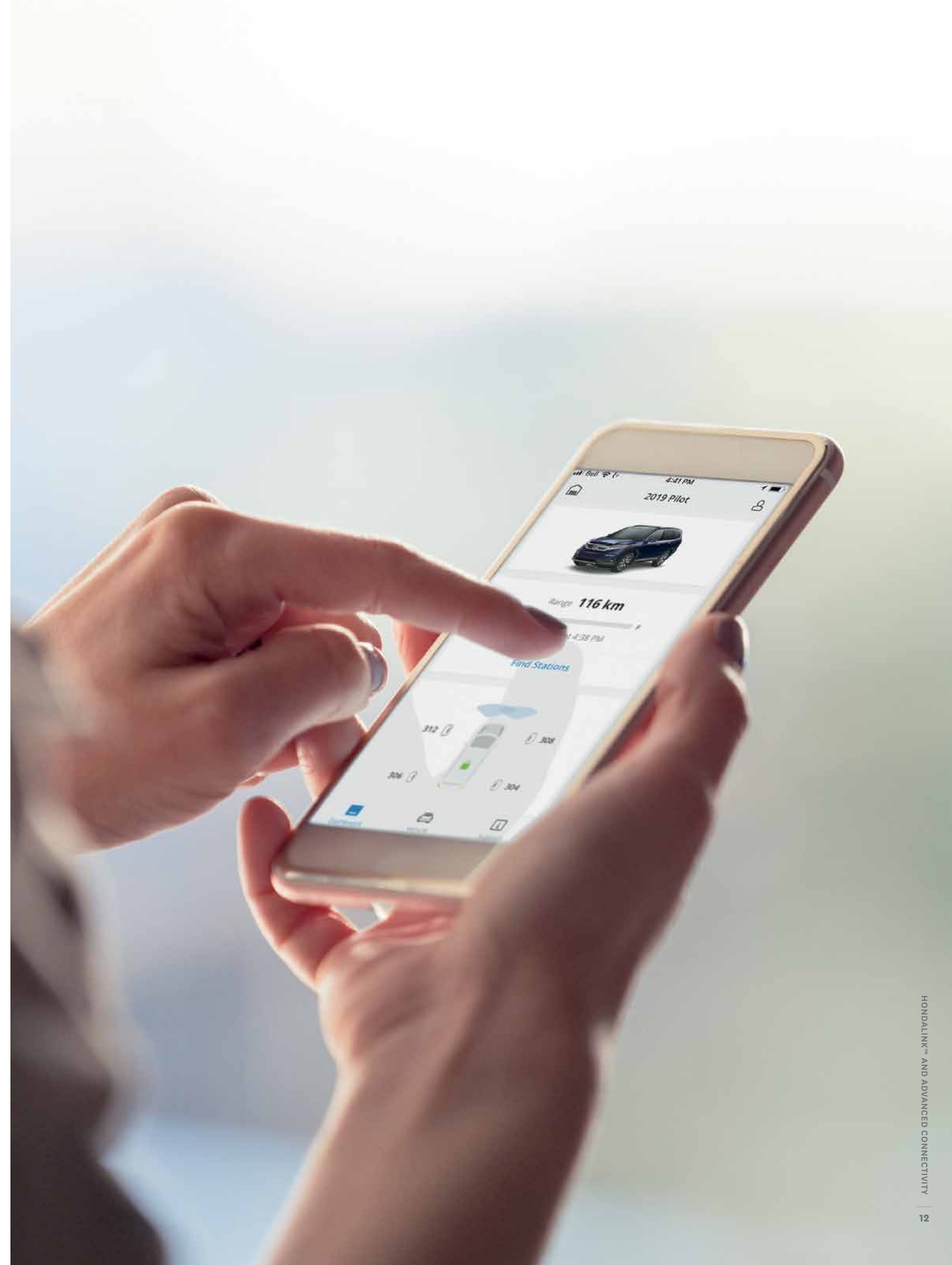
### CabinControl™ app

The standard CabinControl™<sup>1,2</sup> feature gives everyone the opportunity to control the rear temperature, add music to a playlist and send an address to the available Honda Satellite-Linked Navigation System.<sup>TM1,5</sup>



### "How Much Farther?™" app

The available "How Much Farther?™" app<sup>5</sup> is a child-friendly navigation tracking App built in to the Rear Entertainment System. Using multiple background themes with animation, your passengers can track the trip's progress in a fun and interactive way.



1. None of the features we describe are intended to replace the driver's responsibility to exercise due care while driving. Drivers should not use handheld devices or operate certain vehicle features unless it is safe and legal to do so. Some features have technological limitations. For additional feature information, limitations and restrictions, please visit [www.honda.ca/disclaimers](http://www.honda.ca/disclaimers) and refer to the vehicle's Owner's Manual.  
2. Only compatible with certain devices and operating systems. Operation may be dependent upon: 1. GPS satellite signal reception and available cellular data and/or voice connection; or 2. connection to vehicle's built-in Wi-Fi hotspot, if applicable. Associated charges (incl. data plans, roaming charges or other amounts charged by your wireless carrier) may apply.  
3. Subscription to HondaLink™ services is required. HondaLink™-equipped vehicles come with complimentary time-limited trial subscriptions; fees, taxes and other charges will apply in order to continue subscription services upon trial expiry. The availability of certain GPS satellite and/or cellular networks is required for HondaLink™ to operate properly. Service interruptions may occur and/or vehicle system upgrades may be required if cellular network availability is compromised. Some restrictions may apply. For additional HondaLink™ information, please visit [www.honda.ca/hondalink](http://www.honda.ca/hondalink) and [www.honda.ca/privacy](http://www.honda.ca/privacy).  
4. New vehicles are equipped with a complimentary time or data trial period, whichever comes first. After the trial period, contact AT&T or visit [att.com/honda](http://att.com/honda) to purchase available data plans. 4G LTE connection speeds may vary by region.  
5. Map database covers major metropolitan areas in Canada and the 48 contiguous U.S. states.





## Has a sixth sense for safety.

The Pilot comes standard with Honda Sensing™ technologies. These safety and driver-assistive technologies are designed to help improve the driver's situational awareness, and, in some cases, intervene to help avoid a collision or lessen its severity.

**BRAKE**

### Forward Collision Warning (FCW) system

The FCW system<sup>1</sup> is designed to detect the presence of vehicles in front of you and issue audible, visual and tactile alerts if you're approaching with too much speed. If you fail to respond, CMBS<sup>®</sup> is triggered into operation.



### Collision Mitigation Braking System™ (CMBS<sup>®</sup>)

To help reduce the likelihood or severity of a frontal impact, CMBS<sup>®</sup> is engineered to apply light brake pressure if you don't respond to FCW system alerts. If it still senses an imminent collision, CMBS<sup>®</sup> is designed to brake forcefully.



### Lane Departure Warning (LDW) system

The LDW system<sup>1</sup> is designed to monitor vehicle lane position and issue visual and tactile alerts if your vehicle drifts into another detected lane without signaling.



### Lane Keeping Assist System (LKAS)

The LKAS<sup>1</sup> is engineered to gently correct your steering if you begin to leave a detected lane without signaling, applying torque progressively to the steering to help guide you back to the centre of the lane.



### Road Departure Mitigation (RDM) system

The RDM system<sup>1</sup> is designed to help steer and even apply the brakes if it detects that your vehicle may leave the road.



### Adaptive Cruise Control (ACC)

The ACC system<sup>1</sup> is designed to keep a constant speed and set following interval behind a vehicle detected in front of you.

1. None of the features we describe are intended to replace the driver's responsibility to exercise due care while driving. Drivers should not use handheld devices or operate certain vehicle features unless it is safe and legal to do so. Some features have technological limitations. For additional feature information, limitations and restrictions, please visit [www.honda.ca/disclaimers](http://www.honda.ca/disclaimers) and refer to the vehicle's Owner's Manual.



# Solid on safety.

At Honda, we strive to provide a high level of standard safety features to help ensure the safety of occupants, other drivers and even pedestrians. With this added peace of mind, our drivers have the confidence to enjoy every road to the fullest.

## Passive Safety

### Advanced Compatibility Engineering™ (ACE™) body structure

The highly innovative, next generation Advanced Compatibility Engineering™ (ACE™) body structure is engineered to help disperse frontal impact energy to enhance occupant protection, while more effectively controlling it in severe collisions to help prevent intrusion into the passenger cabin.

### Child safety

The Pilot features childproof rear door locks as well as rear seat Lower Anchors and Tethers for Children (LATCH), which give you a simple and convenient method to install compatible child safety seats without using the vehicle's seat belt system.

### HondaLink™ Assist Automatic Emergency Response System

The HondaLink Assist Automatic Emergency Response System<sup>1,3,4</sup> helps you get the help you need when you need it most. If the airbags deploy, your Display Audio System<sup>1</sup> is engineered to automatically attempt to put you on a call with an operator who will forward your location to first responders if needed. It works with any compatible Bluetooth®-paired phone as long as it has reception, does not require a subscription and gives you peace of mind while you're on the road.

### Seat belt safety

The Pilot helps prepare you for the unexpected with 3-point height-adjustable front seat belts with an automatic tensioning system, and 3-point rear seat belts in the second and third rows.

### Six standard airbags

The cabin of the Pilot contains six standard airbags. It features an advanced front airbag system as well as three-row side curtain airbags with rollover sensors, which are designed to deploy the side curtain airbags in the event of a rollover. Plus, it has SmartVent™ side airbags, which are designed to deploy safely in a manner that mitigates the risk of injury to out-of-position or smaller occupants.

### Solid frame structure

Like all Honda trucks, the Pilot is built with a rigid uni-body frame for added strength, stability and vehicle handling.

### Pedestrian safety

Innovative pedestrian safety features include an energy-absorbing hood and front fenders and breakaway wiper pivots.



## Active Safety

### Controlled Braking

To assist with safe stopping, the 4-wheel Anti-lock Braking System<sup>1</sup> (ABS) is designed to help you maintain control under hard braking conditions, while Electronic Brake-force Distribution (EBD) helps to optimize braking power based on weight distribution inside the vehicle. In addition, Brake Assist is engineered to help improve braking performance by applying brake pressure when a panic stop is detected.

### Tire Pressure Monitoring System (TPMS)

To promote enhanced safety and fuel efficiency, the Tire Pressure Monitoring System<sup>2</sup> continually checks the air pressure in each tire. If pressure drops in any tire, the driver receives a dashboard alert.

### Vehicle Stability Assist (VSA®) with Traction Control

Vehicle Stability Assist<sup>1</sup> is designed to sense and help correct oversteer and understeer scenarios to enhance handling and cornering stability, while Traction Control is designed to minimize wheel spin when accelerating on loose or slippery surfaces, helping to inspire greater driver confidence.

### Hill Start Assist<sup>1</sup>

If you take your foot off the brake when stopped on an incline, this feature is engineered to temporarily maintain brake pressure to help prevent your Pilot from starting to roll backwards.

### Auto high beam<sup>1</sup>

The auto high beam feature automatically changes the low beam headlights to high beam headlights in certain circumstances to help improve your vision.

1. None of the features we describe are intended to replace the driver's responsibility to exercise due care while driving. Drivers should not use handheld devices or operate certain vehicle features unless it is safe and legal to do so. Some features have technological limitations. For additional feature information, limitations and restrictions, please visit [www.honda.ca/disclaimers](http://www.honda.ca/disclaimers) and refer to the vehicle's Owner's Manual.  
2. For optimal tire wear and performance, the pressure should be checked regularly with a tire gauge. Do not rely solely on the monitor system.  
3. Only compatible with certain devices and operating systems. Operation may be dependent upon: 1. GPS satellite signal reception and available cellular data and/or voice connection; or 2. connection to vehicle's built-in Wi-Fi hotspot, if applicable. Associated charges (incl. data plans, roaming charges or other amounts charged by your wireless carrier) may apply.  
4. Operation requires wireless mobile phone to be paired with the vehicle. Operation is dependent upon cellular data and/or voice connection availability and GPS satellite signal reception.





## Make it your Honda.

With countless customizable accessories and configurations, let the Pilot show off what you're all about.





Accentuate your style.

Hood edge deflector, low profile



Door visor



Roof rack crossbars



Trailer hitch



Front grille



Puddle light, side



Running boards



Lower door garnish, black



Body side moulding



**Other Accessories Available**

- 20" alloy wheel, black
- Front and rear bumper garnish
- Moonroof visor
- Rear back-up sensors
- Roof rack

See more accessories at [honda.ca](http://honda.ca)

Accessories and packages are subject to inventory availability.



# Customize your cabin.

All-season floor mats (high wall)



Cargo side lining protector



Cargo tray, folding



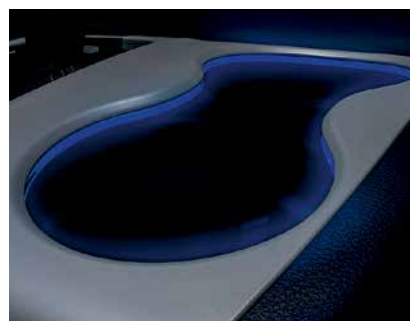
Seat back protector



Wireless charger



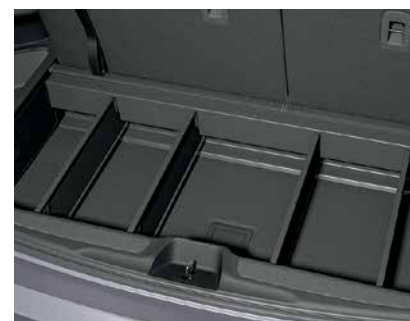
Ambient lighting, cup holder



Door sill trim, illuminated



Cargo bin dividers



Puddle light, rear



## Other Accessories Available

- Ashtray, cup-holder style
- Cargo net
- Cargo organizer
- Heated steering wheel
- Rear seat cover

See more accessories at [honda.ca](http://honda.ca)

Accessories and packages are subject to inventory availability.

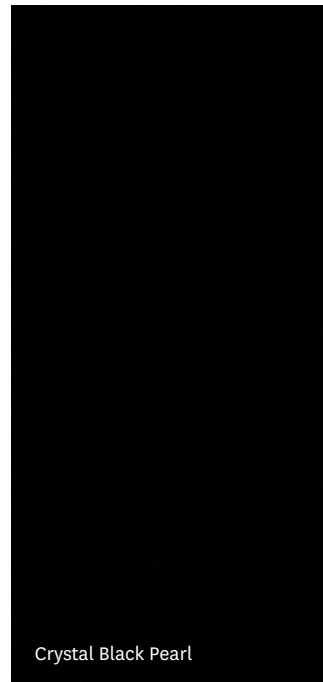


# Colour & Trim

When it comes to your Honda, we keep the options wide open. From the impressive range of exterior colours to the refined leather or fabric interior options, achieving the perfect balance for your Honda is easier than ever.

PILOT	LX	EX	EX-L NAVI	TOURING 8P	TOURING 7P	BLACK EDITION
Crystal Black Pearl	Black Fabric	Black Fabric	Black Leather	Black Leather*	Black Leather* or Beige Leather*	Black Leather with Red Contrast Stitching
Deep Scarlet Pearl				Black Leather*	Black Leather*	
Lunar Silver Metallic			Grey Leather	Black Leather*	Black Leather*	
Modern Steel Metallic	Black Fabric	Black Fabric	Grey Leather	Black Leather*	Black Leather*	
Obsidian Blue Pearl		Black Fabric	Black Leather	Black Leather*	Black Leather*	
Steel Sapphire Metallic					Black Leather*	
White Diamond Pearl	Black Fabric	Black Fabric	Black Leather	Black Leather*	Black Leather*	

\*Perforated



Crystal Black Pearl



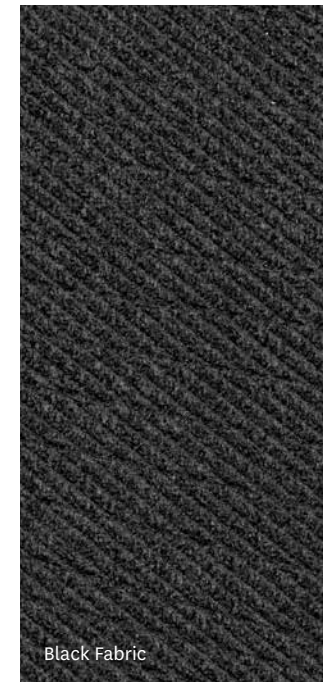
Deep Scarlet Pearl



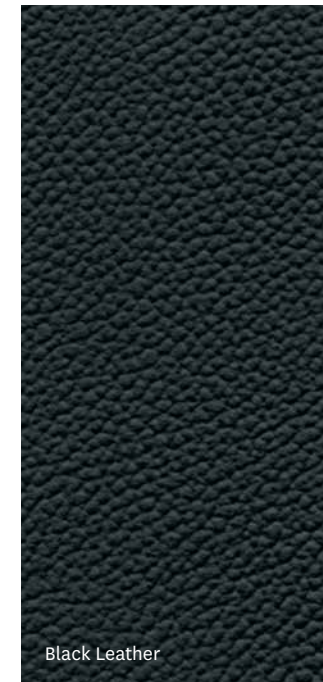
Lunar Silver Metallic



Modern Steel Metallic



Black Fabric



Black Leather



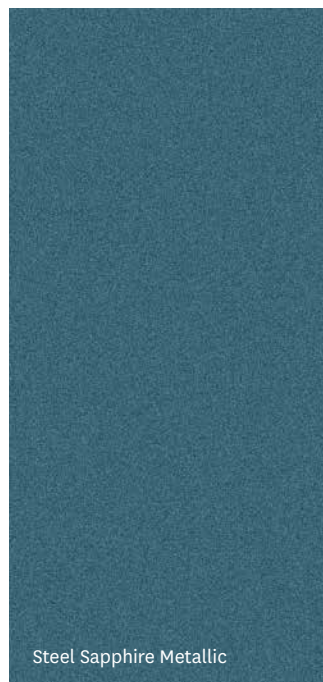
Black Leather (Perforated)



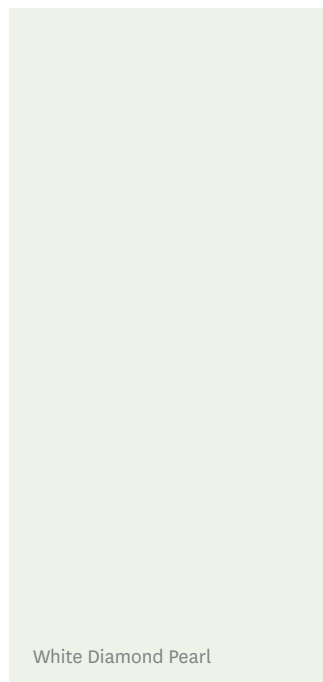
Black Leather with Red Contrast Stitching



Obsidian Blue Pearl



Steel Sapphire Metallic



White Diamond Pearl



Beige Leather (Perforated)



Grey Leather



# Trims

LX
<p><b>KEY FEATURES:</b></p> <ul style="list-style-type: none"> <li>• 280 horsepower,<sup>1</sup> 3.5-litre, 24-valve, Direct Injection, SOHC, i-VTEC® V6 engine</li> <li>• 1,588 kg or available 2,268 kg towing capacity<sup>4</sup></li> <li>• 18" aluminum-alloy wheels</li> <li>• 264-watt AM/FM audio system with MP3/Windows Media® Audio playback capability and 7 speakers including subwoofer</li> <li>• 6-speed automatic transmission with Grade Logic Control</li> <li>• Apple CarPlay™<sup>2,3</sup>/Android Auto™<sup>2,3</sup></li> <li>• Auto high beam</li> <li>• CabinControl™ app<sup>2,3</sup></li> <li>• Display Audio System<sup>2</sup> with HondaLink™<sup>2,3,5</sup></li> <li>• Front wiper de-icer</li> <li>• HandsFreeLink™-bilingual Bluetooth® wireless mobile phone interface<sup>2,3</sup> with steering-wheel mounted controls</li> <li>• Heated front seats</li> <li>• Intelligent Traction Management System</li> <li>• Intelligent Variable Torque Management (i-VTM4™) AWD system</li> <li>• LED daytime running lights</li> <li>• LED headlights with auto-on/off (Low beam)</li> <li>• Multi-angle rearview camera<sup>2</sup> with dynamic guidelines</li> <li>• Proximity key entry system with pushbutton start</li> <li>• Remote engine starter</li> <li>• Seating capacity: 8</li> <li>• Sliding and reclining 60/40 split-folding second-row seat</li> <li>• Variable Cylinder Management® (VCM®)</li> </ul>

EX
<p><b>ADDS TO OR REPLACES LX FEATURES:</b></p> <ul style="list-style-type: none"> <li>• Auto-dimming rearview mirror</li> <li>• Driver’s seat with 10-way power adjustment including power lumbar support</li> <li>• HomeLink® remote system<sup>6</sup></li> <li>• Honda LaneWatch™ blind spot display<sup>2</sup></li> <li>• Leather-wrapped steering wheel</li> <li>• LED Fog lights</li> <li>• Mirror-integrated LED turn signal indicators</li> <li>• One-touch power moonroof with tilt feature</li> <li>• Roof rails</li> </ul>

EX-L NAVI
<p><b>ADDS TO OR REPLACES EX FEATURES:</b></p> <ul style="list-style-type: none"> <li>• Body-coloured front and rear parking sensors</li> <li>• Heated leather-wrapped steering wheel</li> <li>• Heated second-row seats (outboard positions only)</li> <li>• Honda Satellite-Linked Navigation System™<sup>2,7</sup> and bilingual Voice Recognition</li> <li>• Leather-trimmed seating surfaces</li> <li>• Memory-linked side mirrors with reverse gear tilt-down</li> <li>• One-touch second row seats</li> <li>• Passenger’s seat with 4-way power adjustment</li> <li>• Power tailgate</li> <li>• SiriusXM™<sup>8</sup></li> </ul>

TOURING 8P
<p><b>ADDS TO OR REPLACES EX-L NAVI FEATURES:</b></p> <ul style="list-style-type: none"> <li>• 20" aluminum-alloy wheels</li> <li>• 9-speed automatic transmission with Grade Logic Control</li> <li>• 115-volt power outlet</li> <li>• 600-watt AM/FM/CD Premium audio system with MP3/Windows Media® Audio playback capability and 11 speakers including subwoofer and 5.1 Surround Sound</li> <li>• 11 speakers including subwoofer and 5.1 Surround Sound</li> <li>• High-resolution WSVGA (1024x600) screen, Blu-ray™ player and embedded streaming media apps</li> <li>• Ambient Lighting (Blue)</li> <li>• AT&amp;T Wi-Fi hotspot<sup>3,9</sup></li> <li>• Auto-dimming power folding side mirrors</li> <li>• Blind Spot Information<sup>2</sup> (BSI) system with Rear Cross Traffic Monitor<sup>2</sup> system</li> <li>• CabinTalk™<sup>2</sup> in-car PA</li> <li>• Hands-free power tailgate</li> <li>• HDMI® (High-Definition Multimedia Interface) input jack<sup>3</sup></li> <li>• Heated and ventilated front seats</li> <li>• HondaLink™<sup>2,3,5</sup> Subscription Services</li> <li>• “How much Farther?™” app<sup>7</sup></li> <li>• Idle-stop</li> <li>• LED headlights with auto-on/off (High and low beam)</li> <li>• Perforated leather-trimmed seating surfaces</li> <li>• Rain-sensing windshield wipers</li> <li>• Wireless charging</li> </ul>

TOURING 7P
<p><b>ADDS TO OR REPLACES TOURING 8P FEATURES:</b></p> <ul style="list-style-type: none"> <li>• Heated second-row captain’s chairs</li> <li>• Panoramic moonroof</li> <li>• Sliding and reclining second-row captain’s chairs</li> <li>• Seating capacity: 7</li> </ul>

BLACK EDITION
<p><b>ADDS TO OR REPLACES TOURING 7P FEATURES:</b></p> <ul style="list-style-type: none"> <li>• 20" aluminum-alloy wheels, black</li> <li>• Ambient Lighting (Red)</li> <li>• Black Edition grille emblem</li> <li>• Body-coloured door handles</li> <li>• Bumper skid garnish, gloss black</li> <li>• Front grille bar, gloss black</li> <li>• Roof rails, black</li> </ul>

HONDA SENSING™ TECHNOLOGIES
<p><b>STANDARD ON ALL MODELS:</b></p> <ul style="list-style-type: none"> <li>• Forward Collision Warning (FCW) system<sup>2</sup></li> <li>• Collision Mitigation Braking System™<sup>2</sup> (CMBS®)</li> <li>• Lane Departure Warning (LDW) system<sup>2</sup></li> <li>• Lane Keeping Assist System (LKAS)<sup>2</sup></li> <li>• Road Departure Mitigation (RDM) system<sup>2</sup></li> <li>• Adaptive Cruise Control (ACC)<sup>2</sup></li> </ul>

ENGINE	LX	EX	EX-L NAVI	TOURING 8P	TOURING 7P	BLACK EDITION
3.5-litre, 24-valve, Direct Injection, SOHC, i-VTEC® V6	•	•	•	•	•	•
Horsepower @ rpm <sup>1</sup>	280 @ 6000	280 @ 6000	280 @ 6000	280 @ 6000	280 @ 6000	280 @ 6000
Torque (lb.-ft. @ rpm) <sup>1</sup>	262 @ 4700	262 @ 4700	262 @ 4700	262 @ 4700	262 @ 4700	262 @ 4700
Displacement (cc)	3471	3471	3471	3471	3471	3471
Emissions rating	Tier 3 Bin 125	Tier 3 Bin 125	Tier 3 Bin 125	Tier 3 Bin 125	Tier 3 Bin 125	Tier 3 Bin 125
Bore and stroke (mm)	89 x 93	89 x 93	89 x 93	89 x 93	89 x 93	89 x 93
Compression ratio	11.5:1	11.5:1	11.5:1	11.5:1	11.5:1	11.5:1
Active Control Engine Mount (ACM) system	•	•	•	•	•	•
Eco Assist™ system	•	•	•	•	•	•
Idle-stop	•	•	•	•	•	•
Variable Cylinder Management® (VCM®)	•	•	•	•	•	•
Recommended fuel	Regular	Regular	Regular	Regular	Regular	Regular

DRIVETRAIN	LX	EX	EX-L NAVI	TOURING 8P	TOURING 7P	BLACK EDITION
6-speed automatic transmission with Grade Logic Control	•	•	•	•	•	•
9-speed automatic transmission with Grade Logic Control	•	•	•	•	•	•
Steering wheel-mounted paddle shifters	•	•	•	•	•	•
ECON mode button	•	•	•	•	•	•
Final drive ratio	4.25	4.25	4.25	4.33	4.33	4.33
Intelligent Variable Torque Management (i-VTM4™) AWD system	•	•	•	•	•	•
Intelligent Traction Management System	•	•	•	•	•	•
Towing capacity <sup>2</sup> (kg)	1588 or available 2268	1588 or available 2268	1588 or available 2268	1588 or available 2268	1588 or available 2268	1588 or available 2268

BODY/SUSPENSION/CHASSIS	LX	EX	EX-L NAVI	TOURING 8P	TOURING 7P	BLACK EDITION
18" aluminum-alloy wheels	•	•	•	•	•	•
20" aluminum-alloy wheels	•	•	•	•	•	Black
All-season tires	P245/60 R18 105H	P245/60 R18 105H	P245/60 R18 105H	P245/50 R20 102H	P245/50 R20 102H	P245/50 R20 102H
Spare tire	T165/80 D17	T165/80 D17	T165/80 D17	T165/80 D17	T165/80 D17	T165/80 D17
Agile Handle Assist	•	•	•	•	•	•
Battery management system	•	•	•	•	•	•
Amplitude reactive dampers	•	•	•	•	•	•
MacPherson strut front suspension	•	•	•	•	•	•
Multi-link independent rear suspension	•	•	•	•	•	•
Electric power-assisted rack-and-pinion steering (EPS)	•	•	•	•	•	•
Stabilizer bars – front/rear (mm)	25/26.5	25/26.5	25/26.5	25/26.5	25/26.5	25/26.5
Steering wheel turns, lock-to-lock	3.14	3.14	3.14	3.14	3.14	3.14
Power-assisted, ventilated front disc/solid rear disc brakes	•	•	•	•	•	•

ACTIVE SAFETY	LX	EX	EX-L NAVI	TOURING 8P	TOURING 7P	BLACK EDITION
4-wheel Anti-lock Braking System <sup>3</sup> (ABS)	•	•	•	•	•	•
Brake Assist	•	•	•	•	•	•
Electronic Brake-force Distribution (EBD)	•	•	•	•	•	•
Collision Mitigation Braking System™ <sup>3</sup> (CMBS®) (HS*)	•	•	•	•	•	•
Forward Collision Warning <sup>2</sup> (FCW) system (HS*)	•	•	•	•	•	•
Lane Departure Warning <sup>3</sup> (LDW) system (HS*)	•	•	•	•	•	•
Road Departure Mitigation <sup>3</sup> (RDM) system (HS*)	•	•	•	•	•	•
Hill Start Assist <sup>3</sup>	•	•	•	•	•	•
LED daytime running lights	•	•	•	•	•	•
Tire Pressure Monitoring System <sup>4</sup> (TPMS) with tire fill assist	•	•	•	•	•	•
Trailer Stability Assist	•	•	•	•	•	•
Vehicle Stability Assist <sup>3</sup> (VSA®) with Traction Control	•	•	•	•	•	•

HS\*=Feature is a component of the Honda Sensing™ suite of safety and driver assist features.

PASSIVE SAFETY	LX	EX	EX-L NAVI	TOURING 8P	TOURING 7P	BLACK EDITION
3-point rear seat belts	•	•	•	•	•	•
Front 3-point seat belts with automatic tensioning system	•	•	•	•	•	•
Childproof rear door locks	•	•	•	•	•	•
Advanced front airbag system	•	•	•	•	•	•
HondaLink™ Assist Automatic Emergency Response System <sup>3,5,6</sup>	•	•	•	•	•	•
Lower Anchors and Tethers for Children (LATCH)	4	4	4	4	3	3
Next-Generation Advanced Compatibility Engineering™ (ACE™) body structure	•	•	•	•	•	•
SmartVent™ side airbags	•	•	•	•	•	•
Three-row side curtain airbags with rollover sensor system	•	•	•	•	•	•

DRIVER ASSIST TECHNOLOGY	LX	EX	EX-L NAVI	TOURING 8P	TOURING 7P	BLACK EDITION
Adaptive Cruise Control <sup>3</sup> (ACC) (HS*)	•	•	•	•	•	•
Lane Keeping Assist System <sup>3</sup> (LKAS) (HS*)	•	•	•	•	•	•
Auto high beam	•	•	•	•	•	•
Blind Spot Information <sup>3</sup> (BSI) system with Rear Cross Traffic Monitor <sup>3</sup> system	•	•	•	•	•	•
Honda LaneWatch™ blind spot display <sup>3</sup>	•	•	•	•	•	•

HS\*=Feature is a component of the Honda Sensing™ suite of safety and driver assist features.

1. Horsepower and torque calculations reflect SAE net, Rev. 08/04, SAE J1349 procedures.  
 2. None of the features we describe are intended to replace the driver’s responsibility to exercise due care while driving. Drivers should not use handheld devices or operate certain vehicle features unless it is safe and legal to do so. Some features have technological limitations. For additional feature information, limitations and restrictions, please visit [www.honda.ca/disclaimers](http://www.honda.ca/disclaimers) and refer to the vehicle’s Owner’s Manual.  
 3. Only compatible with certain devices and operating systems. Operation may be dependent upon: 1. GPS satellite signal reception and available cellular data and/or voice connection; or 2. connection to vehicle’s built-in Wi-Fi hotspot, if applicable. Associated charges (incl. data plans, roaming charges or other amounts charged by your wireless carrier) may apply.  
 4. Accessory towing package required. Packages are available at an additional cost as a dealer-installed item. See your Owner’s Manual for proper towing operation.  
 5. Subscription to HondaLink™ services is required. HondaLink™-equipped vehicles come with complimentary time-limited trial subscriptions; fees, taxes and other charges will apply in order to continue subscription services upon trial expiry. The availability of certain GPS satellite and/or cellular networks is required for HondaLink™ to operate properly. Service interruptions may occur and/or vehicle system upgrades may be required if cellular network availability is compromised. Some restrictions may apply. For additional HondaLink™ information, please visit [www.honda.ca/hondalink](http://www.honda.ca/hondalink) and [www.honda.ca/privacy](http://www.honda.ca/privacy).  
 6. HomeLink® can be programmed with codes of up to three remote-control devices (e.g., garage-door opener, home security system, etc.).  
 7. Map database covers major metropolitan areas in Canada and the 48 contiguous U.S. states.  
 8. Only available in certain areas. Includes a no-charge trial of three months.  
 9. New vehicles are equipped with a complimentary time or data trial period, whichever comes first. After the trial period, contact AT&T or visit [att.com/honda](http://att.com/honda) to purchase available data plans. 4G LTE connection speeds may vary by region.



EXTERIOR	LX	EX	EX-L NAVI	TOURING 8P	TOURING 7P	BLACK EDITION
Auto-levelling front headlights				•	•	•
Body-coloured door handles	•	•	•	Chrome	Chrome	•
Body-coloured heated power side mirrors	•	•	•	With painted black base	With painted black base	With painted black base
				Silver	Silver	Gloss black
Bumper skid garnish	Black	Silver	Silver	Chrome	Chrome	Gloss black
Front grille bar	Chrome	Chrome	Chrome	Chrome	Chrome	Gloss black
LED fog lights		•	•	•	•	•
Front and rear splash guards	•	•	•	•	•	•
Front wiper de-icer	•	•	•	•	•	•
Intermittent rear window wiper/washer	•	•	•	•	•	•
LED taillights	•	•	•	•	•	•
Memory-linked side mirrors with reverse gear tilt-down				•	•	•
Mirror-integrated LED turn signal indicators		•	•	•	•	•
LED headlights with auto-on/off (Low beam)	•	•	•	•	•	•
LED headlights with auto-on/off (High and low beam)				•	•	•
One-touch power moonroof with tilt feature		•	•	•	•	•
Panoramic moonroof					•	•
Auto-dimming power folding side mirrors				•	•	•
Power tailgate			•	Hands-free access	Hands-free access	Hands-free access
Rain-sensing windshield wipers				•	•	•
Rear window defroster	•	•	•	•	•	•
Roof rails		•	•	•	•	Black
Rear privacy-tinted glass	•	•	•	•	•	•
Variable intermittent windshield wipers	•	•	•	•	•	•
COMFORT & CONVENIENCE	LX	EX	EX-L NAVI	TOURING 8P	TOURING 7P	BLACK EDITION
12-volt power outlets	2	3	3	3	3	3
115-volt power outlet				•	•	•
Acoustic windshield			•	•	•	•
Acoustic glass (front doors)				•	•	•
Active Noise Cancellation (ANC)	•	•	•			
Ambient lighting				Blue	Blue	Red
Auto-dimming rearview mirror		•	•	•	•	•
Body-coloured front and rear parking sensors			•	•	•	•
Cargo area tie-down anchors (4)	•	•	•	•	•	•
7" colour TFT centre meter display with Driver Information Interface	•	•	•	•	•	•
Compass			Navi-based	Navi-based	Navi-based	Navi-based
Conversation mirror with sunglasses holder	•	•	•	•	•	•
CabinTalk™ in-car PA				•	•	•
Display Audio System <sup>3</sup> with Honda Satellite-Linked Navigation System™ <sup>3,7</sup> and bilingual Voice Recognition			•	•	•	•
Door-pocket storage bins	•	•	•	•	•	•
Driver's and front passenger's seatback and device pockets	Passenger only	Seatback pockets only	•	•	•	•
Driver's and front passenger's vanity mirrors	•	Illuminated	Illuminated	Illuminated	Illuminated	Illuminated
Electronic gear selector				•	•	•
Exterior temperature indicator	•	•	•	•	•	•
HandsFreeLink™-bilingual Bluetooth® wireless mobile phone interface <sup>3,5</sup> with steering-wheel mounted controls	•	•	•	•	•	•
HomeLink® remote system <sup>8</sup>		•	•	•	•	•
Immobilizer theft-deterrent system	•	•	•	•	•	•
Integrated second-row sunshades			•	•	•	•
Floor mats	Carpet	Carpet	Carpet	Carpet	Carpet	Black Edition
Maintenance Minder™ system	•	•	•	•	•	•
Multi-angle rearview camera <sup>3</sup> with dynamic guidelines	•	•	•	•	•	•
One-touch turn signals	•	•	•	•	•	•
Power windows with auto-up/down driver and passenger window	•	•	•	•	•	•
Proximity key entry system with pushbutton start	•	•	•	•	•	•
Remote engine starter	•	•	•	•	•	•
Reversible cargo lid	•	•	•	•	•	•
Second-row folding centre armrest	•	•	•	•		
Second-row passenger armrest					•	•
Second and third-row heater ducts	•	•	•	•	•	•
Second-row automatic HVAC controls	•	•	•	•	•	•
Security system	•	•	•	•	•	•
Steering wheel-mounted controls (cruise control, audio, telephone, multi-information display)	•	•	•	•	•	•
Tilt and telescoping steering column	•	•	•	•	•	•
Tri-zone automatic climate control with air-filtration system	•	•	•	•	•	•
Walk-away door lock	•	•	•	•	•	•
Wireless charging				•	•	•
SEATING & TRIM	LX	EX	EX-L NAVI	TOURING 8P	TOURING 7P	BLACK EDITION
Driver's seat armrest	•	•	Adjustable	Adjustable	Adjustable	Adjustable
Passenger seat armrest	•	•	•	Adjustable	Adjustable	Adjustable
Driver's seat with 6-way manual adjustment	•					
Driver's seat with 10-way power adjustment including power lumbar support		•	•	•	•	•
Driver's seat position memory			•	•	•	•
Heated front seats	•	•	•	•	•	•
Heated second-row seats (outboard positions only)			•	•		
Heated second-row captain's chairs					•	•

SEATING & TRIM (continued)	LX	EX	EX-L NAVI	TOURING 8P	TOURING 7P	BLACK EDITION
Heated leather-wrapped steering wheel		Not heated	•	•	•	•
Leather-trimmed seating surfaces			•	Perforated	Perforated	Perforated
Passenger's seat with 4-way manual adjustment	•	•				
Passenger's seat with 4-way power adjustment			•	•	•	•
Sliding and reclining 60/40 split-folding second-row seat	•	•	•	•		
Sliding and reclining second-row captain's chairs					•	•
One-touch second row seats			•	•	•	•
60/40 split-folding third-row seat	•	•	•	•	•	•
Seating capacity	8	8	8	8	7	7
Ventilated front seats				•	•	•
ENTERTAINMENT	LX	EX	EX-L NAVI	TOURING 8P	TOURING 7P	BLACK EDITION
264-watt AM/FM audio system with MP3/Windows Media® Audio playback capability and 7 speakers including subwoofer	•	•	•			
600-watt AM/FM/CD Premium audio system with MP3/Windows Media® Audio playback capability and 11 speakers including subwoofer and 5.1 Surround Sound				•	•	•
Apple CarPlay™ <sup>3,5</sup> /Android Auto™ <sup>3,5</sup>	•	•	•	•	•	•
Display Audio System <sup>3</sup>	•	•	Including Navigation <sup>3,7</sup>	Including Navigation <sup>3,7</sup>	Including Navigation <sup>3,7</sup>	Including Navigation <sup>3,7</sup>
HondaLink™ <sup>3,5,9</sup>	•	•	•	•	•	•
HondaLink™ <sup>3,5,9</sup> Subscription Services				•	•	•
AT&T Wi-Fi hotspot <sup>5,10</sup>				•	•	•
Advanced Rear Entertainment System with 10.2-inch, high-resolution WSVGA (1024x600) screen, Blu-ray™ player and embedded streaming media apps				•	•	•
Bluetooth® Streaming Audio <sup>3,5</sup>	•	•	•	•	•	•
CabinControl™ app <sup>3,5</sup>	•	•	•	•	•	•
MP3/auxiliary input jack	•	•	•	•	•	•
"How much Farther?"™ app <sup>7</sup>				•	•	•
HDMI® (High-Definition Multimedia Interface) input jack				•	•	•
HD Radio™ <sup>11</sup>			•	•	•	•
USB device connector <sup>5</sup>	2	2	4	4	4	4
Siri Eyes Free compatibility <sup>3,5</sup>	•	•	•	•	•	•
SMS text message <sup>3,5</sup> /E-mail function <sup>3,5</sup>	•	•	•	•	•	•
Speed-sensitive Volume Control (SVC)	•	•	•	•	•	•
SiriusXM™ <sup>12</sup>			•	•	•	•
Wi-Fi tethering <sup>5</sup>	•	•	•	•	•	•
FUEL ECONOMY <sup>13</sup> (L/100 KM)	LX	EX	EX-L NAVI	TOURING 8P	TOURING 7P	BLACK EDITION
i-VTM4™ AWD (City/Hwy/Combined)	13.0/9.3/11.3	13.0/9.3/11.3	13.0/9.3/11.3	12.4/9.3/11.0	12.4/9.3/11.0	12.4/9.3/11.0
DIMENSIONS	LX	EX	EX-L NAVI	TOURING 8P	TOURING 7P	BLACK EDITION
Approach/departure angle (degrees)	19.7/20.8	19.7/20.8	19.7/20.8	19.7/20.8	19.7/20.8	19.7/20.8
Cargo volume behind front row (L)	3087	3092	3092	3092	3072	3072
Cargo volume behind 2nd row (L)	1583	1583	1583	1583	1583	1583
Cargo volume behind 3rd row (L)	524	524	524	524	510	510
Curb weight (kg)	1932	1943	1965	1964	1968	1968
Fuel tank capacity (L)	73.8	73.8	73.8	73.8	73.8	73.8
Gross vehicle weight rating (kg)	2650	2650	2650	2650	2650	2650
Ground clearance (mm)	185	185	185	185	185	185
Headroom – front/2nd row/3rd row (mm)	1019/1020/989	1004/1014/989	1004/1014/989	1004/1014/989	1004/1040/989	1004/1040/989
Height (mm)	1794	1794	1794	1794	1794	1794
Hip room – front/2nd row/3rd row (mm)	1501/1456/1132	1501/1456/1132	1501/1456/1132	1501/1456/1132	1501/1456/1132	1501/1456/1132
Legroom – front/2nd row/3rd row (mm)	1040/976/810	1040/976/810	1040/976/810	1040/976/810	1040/976/810	1040/976/810
Length (mm)	4991	4991	4991	4991	4991	4991
Passenger volume (L)	4330	4296	4296	4296	4335	4335
Shoulder room – front/2nd row/3rd row (mm)	1576/1576/1463	1576/1576/1463	1576/1576/1463	1576/1576/1463	1576/1576/1463	1576/1576/1463
Track – front/rear (mm)	1684/1684	1684/1684	1684/1684	1684/1684	1684/1684	1684/1684
Turning radius (m)	5.75	5.75	5.75	5.75	5.75	5.75
Wheelbase (mm)	2820	2820	2820	2820	2820	2820
Width – including mirrors/mirrors folded (mm)	2296/2029	2296/2029	2296/2029	2296/2029	2296/2029	2296/2029

1. Horsepower and torque calculations reflect SAE net, Rev. 08/04, SAE J1349 procedures.  
2. Accessory towing package required. Packages are available at an additional cost as a dealer-installed item. See your Owner's Manual for proper towing operation.  
3. None of the features we describe are intended to replace the driver's responsibility to exercise due care while driving. Drivers should not use handheld devices or operate certain vehicle features unless it is safe and legal to do so. Some features have technological limitations. For additional feature information, limitations and restrictions, please visit [www.honda.ca/disclaimers](http://www.honda.ca/disclaimers) and refer to the vehicle's Owner's Manual.  
4. For optimal tire wear and performance, the pressure should be checked regularly with a tire gauge. Do not rely solely on the monitor system.  
5. Only compatible with certain devices and operating systems. Operation may be dependent upon: 1. GPS satellite signal reception and available cellular data and/or voice connection; or 2. connection to vehicle's built-in Wi-Fi hotspot, if applicable. Associated charges (incl. data plans, roaming charges or other amounts charged by your wireless carrier) may apply.  
6. Operation requires wireless mobile phone to be paired with the vehicle. Operation is dependent upon cellular data and/or voice connection availability and GPS satellite signal reception.  
7. Map database covers major metropolitan areas in Canada and the 48 contiguous U.S. states.  
8. HomeLink® can be programmed with codes of up to three remote-control devices (e.g., garage-door opener, home security system, etc.).  
9. Subscription to HondaLink™ services is required. HondaLink™-equipped vehicles come with complimentary time-limited trial subscriptions; fees, taxes and other charges will apply in order to continue subscription services upon trial expiry. The availability of certain GPS satellite and/or cellular networks is required for HondaLink™ to operate properly. Service interruptions may occur and/or vehicle system upgrades may be required if cellular network availability is compromised. Some restrictions may apply. For additional HondaLink™ information, please visit [www.honda.ca/hondalink](http://www.honda.ca/hondalink) and [www.honda.ca/privacy](http://www.honda.ca/privacy).  
10. New vehicles are equipped with a complimentary time or data trial period, whichever comes first. After the trial period, contact AT&T or visit [att.com/honda](http://att.com/honda) to purchase available data plans. 4G LTE connection speeds may vary by region.  
11. Coverage varies by market.  
12. Only available in certain areas. Includes a no-charge trial of three months.  
13. Estimated fuel consumption based on Government of Canada's 5-cycle testing method. Your actual fuel consumption will vary based on driving habits and other factors – use for comparison only. For more information on 5-cycle testing, visit <http://vehicles.nrcan.gc.ca>.



**We're Here.** At Honda, assistance and support are always available. The team of trained technicians at your Honda dealership will help keep your vehicle in terrific shape. If you need more information or assistance relating to your warranty, call us at 1-888-9-HONDA-9. For all of the latest Honda information, including product specifications, pricing, photos and more, visit [honda.ca](http://honda.ca). It has everything you need to "design" your Honda and personalize it with items from a list of quality accessories.

**We're Ready to Help.** When you purchase a new Honda, you automatically receive Honda Plus Roadside Assistance. This service is available to you, or any authorized driver, 24 hours a day, 7 days a week, anywhere in Canada or the United States (including the lower 48 states, the District of Columbia, Alaska, Hawaii, and Puerto Rico). Coverage is for 3 years over an unlimited distance and includes a 24-hour toll-free Honda Plus Roadside Assistance number, mechanical breakdown towing, emergency roadside service and many other helpful features. Ask your dealer for more information.

**Honda Plus Extended Warranty.** Experience added protection with Honda Plus coverage that is behind you for the road ahead. With available coverage options of up to 8 years/200,000 km, you can choose the one that best suits your needs. With a plan this wide-ranging, the only thing that's uncertain is where it will take you.

**Honda Financial Services.** Whether you buy or lease a Honda, Honda Financial Services can assist you with the process. Ask your dealer which lease or purchase plan best suits your needs.

**New Honda Vehicle Warranty.** The Honda warranty protection makes Power Train components a minor concern with the Honda 5-year/100,000-km No Nonsense Warranty. In addition to the Honda 5-year/100,000-km No Nonsense Warranty, you and your new Honda are protected by a Honda 3-year/60,000-km Distributor's Warranty as well as an additional series of warranties for such items as emission controls, body corrosion and more.

**Genuine Honda Accessories** give you the opportunity to fine-tune your new Honda just how you like it. Whether you want to turn up the style, the versatility or the exclusivity, every accessory is designed and built to adhere to the strictest Honda standards. See your dealer for full details.

**Genuine Honda Replacement Parts** are made to the same exacting standards as original Honda components and are guaranteed by the Genuine Honda Parts Warranty. Using Genuine Honda Parts will help to maintain the quality, reliability and performance of your vehicle.

**Always use seat belts and appropriate child seats. Children 12 and under are safest when properly restrained in a rear seat. Properly secure all items stored in cargo areas. Always read the vehicle owner's manual for detailed vehicle operation and feature information.**

Honda reserves the right to terminate or change any of the services and/or features listed in this brochure at any time, for any reason. Some features require registration. Certain features may transmit to Honda and/or other service providers a vehicle's location, operating conditions or other information that may be tied to the vehicle identification number (VIN) and can be combined to track a vehicle. For Honda's data use and Privacy Policies, see [www.honda.ca/privacy](http://www.honda.ca/privacy). Specifications, features, illustrations and equipment shown in this brochure are based upon the latest available information at the time of publication. Although descriptions are believed to be correct, accuracy cannot be guaranteed. Honda reserves the right to make changes at any time, without notice or obligation, in colours, specifications, accessories, materials, models and trim availability. Some vehicles may be shown with optional equipment. Some vehicles shown may be U.S. models. Canadian specifications may vary. For Android Auto™ data use and privacy policy, see Terms and Privacy Policy for Android Auto™ app or contact Google Inc. at [www.google.com](http://www.google.com). Android Auto is a trademark of Google Inc. For Apple CarPlay™ data use and privacy policy, see Terms and Privacy Policy for Apple CarPlay™ or contact Apple Inc. at [www.apple.com](http://www.apple.com). Apple CarPlay, Siri and iPhone are trademarks of Apple Inc., registered in the U.S. and other countries. Bluetooth is a registered trademark of SIG Inc. Blu-ray is a trademark of Blu-ray Disc Association. HomeLink and HandsFreeLink are registered trademarks or trademarks of Johnson Controls Technology. HD Radio™ is a proprietary trademark of iBiquity Digital Corp. HDMI is a registered trademark of HDMI Licensing LLC. Windows Media is a registered trademark of Microsoft Corporation. LEED® is a registered trademark of the U.S. Green Building Council, licensed to the Canada Green Building Council for use in Canada. © 2018 SiriusXM Canada Inc. "SiriusXM", the SiriusXM logo, channel names and logos are trademarks of SiriusXM Radio Inc. and are used under licence. Honda and all other marks used herein are trademarks or registered trademarks of Honda Motor Co., Ltd. Honda Canada Inc., 180 Honda Boulevard, Markham, ON, Canada L6C 0H9. 1-888-9-HONDA-9. [www.honda.ca](http://www.honda.ca).





# Here's to the dreamers.

## The Power of Dreams

At Honda, The Power of Dreams drives us to create intelligent products that enhance mobility and increase the joy in people's lives. It is the mindset that guides us to help move people forward and protect the future we all share.

How do we do it? We never stop dreaming. In the 70s, we were the first automaker in the industry to voluntarily adhere to emissions standards. Now, we're advancing robotics and aviation, harnessing solar power and releasing a car that emits only water.

Through it all, our goal never changes: create a safer, smarter world in which people experience the joy of mobility.

## The Honda Canada Foundation

The Honda Canada Foundation enables the realization of dreams by supporting people and organizations across the country that focus on four pillars: Family, Education, Environment and Engineering. Since 2005, more than 5.5 million Canadians have benefited from charitable programs funded by the Honda Canada Foundation.

## Blue Skies for Our Children

We believe everything we do must exist in harmony with nature. That's where "Blue Skies for Our Children" was born. It's more than a mantra – it's an environmental pledge to the Earth and our future generations. And we're practicing what we preach.

## Leading the LEED® certifications

Our sales offices also strive for environmental efficiencies. Honda's LEED® (Leadership in Energy and Environmental Design) Gold Certified Head Office campus in Markham, Ontario, includes green features such as a storm water management system, heat-reflective materials

on the roof and bio swales for natural filtration. The facility uses 89 percent less litres of water per square foot and 38 percent less kilowatt hours of energy annually than the average office facility.

## Zero Waste-to-Landfill

We don't waste time. Or anything else for that matter. Our goal is to increase our recycling efforts, reduce overall waste and divert materials from landfill sites. In fact, last year we sent less than one percent of waste to landfills from our office and parts distribution facilities combined.

## One Honda. One Tree.

We're pretty obsessed with fresh air. For every lawn and garden or ATV product sold between April 1 and July 31 annually, the Honda Canada Foundation plants one tree. In the last 12 years, we've helped plant more than 160,000 trees in Canada.

## Environmental Vehicles & Technology

Blending style, efficiency and a serious amount of thrill, the Accord Hybrid makes environmental responsibility feel almost rebellious. Combining a lithium-ion battery with a 2.0-litre engine, this Hybrid lets you go more and stop less on the way. The Honda Insight exemplifies hybrid efficiency, powered by a 1.5-litre Atkinson Cycle engine, electric motor and lithium-ion battery. And the future looks brighter with Honda advancing Fuel Cell technology that emits zero emissions.

## Honda Clarity Plug-in Hybrid

Whoever said an eco-conscience came with compromise was sorely mistaken. This advanced plug-in hybrid vehicle lets you tap into electric power alongside the gas engine to create extra efficiency.

For more information, visit [hondacanada.ca](http://hondacanada.ca)



HondaJet



Motorcycles



Side By Side



ASIMO



Honda Campus



Marine



Power Equipment



ATVs



Blue Skies for Our Children

