

IMPALA 2019

CHEVROLET



Impala Premier in Blue Velvet
Metallic with available features.



ACCLAIMED EXCELLENCE.

Indulge yourself in the quiet confidence of award-winning excellence. In naming Impala a class-leading “Best Buy of 2018,” KBB.com¹ declared, “If we ever decide to give out an MVP award for full-size cars, you can bet the Impala will own that trophy as well.”

The 2019 Impala honors its storied name with style that’s gracefully aggressive, artistically aerodynamic and passionately refined. Inside a spacious, carefully crafted interior, you’re embraced in exquisite comfort. And you’ll stay connected with an available built-in Wi-Fi[®] hotspot?

Is the renowned Impala the world’s finest large sedan? Ultimately, that’s something you’ll decide when you experience it for yourself.

¹ For more information, visit Kelley Blue Book’s KBB.com. Kelley Blue Book is a registered trademark of Kelley Blue Book Co., Inc. ² Service varies with conditions and location. Requires active OnStar service and paid AT&T data plan. Visit onstar.com for details and limitations.

FIND NEW ROADS™

EXTERIOR DESIGN



“Best Buy Four Years in a Row.”

– Kelley Blue Book’s KBB.com¹



TIMELESS BEAUTY. The unmistakable Impala is an artistic triumph. From its powerdome hood to bold quad taillamps, this is a shape that commands attention from any angle.

PREMIUM APPOINTMENTS. Upscale details of Impala Premier include chrome mirror caps, lower bodyside chrome moldings and a dual-outlet exhaust with bright tips. Available 20-inch aluminum wheels add a custom touch.

¹ Based on 2015–2018 model-year vehicles available in the U.S. market. For more information, visit Kelley Blue Book’s KBB.com. Kelley Blue Book is a registered trademark of Kelley Blue Book Co., Inc.

Impala Premier in Blue Velvet Metallic with available features.



1. AERO SCULPTURE. Impala blends sharply sculpted detail with flowing form. It is an aesthetically pleasing shape that slices through the air with sheer precision.



2. SIGNATURE STYLE. Dramatic lower LED daytime running lamps combine with high-intensity discharge (HID) headlamps on Impala Premier.



3. MIRROR IMAGE. Chrome-capped outside mirrors on Impala Premier are heated and power-adjustable, with integrated turn signal indicators and ground illumination.

INTERIOR DESIGN



Impala Premier interior
in Jet Black/Light Wheat
with available features.

**PREMIUM ELEGANCE WITH
IMPRESSIVE SPACIOUSNESS.**

1. BRING IT ON. Carry everything from luggage to golf clubs with 18.8 cubic feet¹ of trunk space. There's even an available hidden underfloor storage space. And with the standard 60/40 split-folding rear seatback, it's easy to accommodate longer items like skis or even a bicycle.

2. POWER UP. Plug a laptop or other compatible device into the available 120-volt outlet at the rear of the center floor console.

3. PERFECT POSITIONING. Find that perfect driving position with the available 8-way power-adjustable front seats featuring power lumbar control. Available memory settings save preferences for two different drivers.

4. WEATHER THE STORM. You can conveniently store your umbrella in either of the two front door pockets.



¹ Cargo and load capacity limited by weight and distribution.



A HIGHER LEVEL OF LUXURY. From the flowing instrument panel to the exquisite attention to detail, beauty surrounds you in the luxurious Premier interior. The available heated steering wheel with a power tilt/telescoping feature combines with available heated and ventilated perforated leather-appointed front seats to offer year-round comfort.

11-SPEAKER SURROUND SOUND. Your favorite songs come alive with the available Bose® Centerpoint® Surround Sound premium 11-speaker system, while the sounds of the outside world seem to almost disappear with triple-sealed doors and thick windshield and side glass.

Impala Premier interior
in Jet Black/Light Wheat
with available features.

TECHNOLOGY



¹ Full functionality requires compatible Bluetooth and smartphone, and USB connectivity for some devices. Map coverage available in the United States, Puerto Rico and Canada. ² Visit my.chevrolet.com/learnAbout/bluetooth to find out which phones are compatible with the vehicle. ³ Visit chevrolet.com/connectivity for more details. ⁴ Visit onstar.com for coverage map, system limitations and details. OnStar plan, working electrical system, cell service and GPS signal required. OnStar links to emergency services. ⁵ If you decide to continue service after your trial, the subscription plan you choose will automatically renew thereafter and you will be charged according to your chosen payment method at then-current rates. Fees and taxes apply. To cancel you must call SiriusXM at 1-866-635-2349. See SiriusXM Customer Agreement for complete terms at siriusxm.com. All fees and programming subject to change. For more information about Travel Link and NavTraffic, visit siriusxm.com/infotainment.

YOU'RE ALWAYS CONNECTED.

The standard Chevrolet Infotainment System¹ with Bluetooth[®] wireless technology² makes it easy to connect to calls, music, contacts and more – all by using natural voice commands or the 8-inch diagonal color touch-screen display.

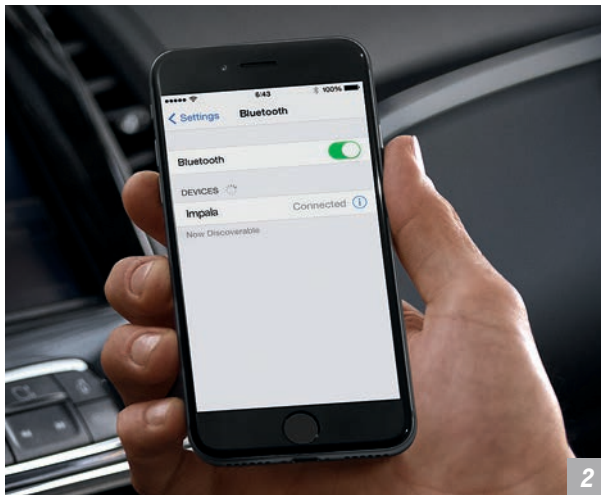
CUSTOMIZE YOUR DRIVE. Easily browse, select and install apps³ that can help enhance your driving experience. Using the vehicle's touch-screen, you can customize your content with music, audiobooks, weather and more.

NAVIGATION MADE EASY. Get directions with OnStar Turn-by-Turn Navigation included in the Safety & Security Plan⁴ (comes with 1-month coverage). Or go for the available Chevrolet Infotainment System¹ with Navigation, featuring full GPS guidance, along with a 3-month trial of SiriusXM[®] NavTraffic⁵ and Travel Link⁵ for weather and traffic updates, fuel prices and more.

AVAILABLE SIRIUSXM RADIO⁵ Listen to over 150 channels of commercial-free music from every genre, live play-by-play sports, the biggest news and talk, and the hottest entertainment at your fingertips, 24/7.



1



2



3

1. CUSTOMIZABLE TOUCH-SCREEN.

To personalize the home screen, simply drag and drop the application icons – similar to the way you would on a smartphone or tablet.

2. CONNECT YOUR SMARTPHONE.

The Chevrolet Infotainment System¹ is capable of pairing up to 10 mobile devices with Bluetooth wireless technology²

3. A SECURE PLACE. The 8-inch diagonal color touch-screen includes hidden, lockable storage behind the display to stow valuables out of sight. It also includes a USB port³ for charging your smartphone.

¹ Full functionality requires compatible Bluetooth and smartphone, and USB connectivity for some devices. Map coverage available in the United States, Puerto Rico and Canada.

² Visit my.chevrolet.com/learnAbout/bluetooth to find out which phones are compatible with the vehicle. ³ Not compatible with all devices.



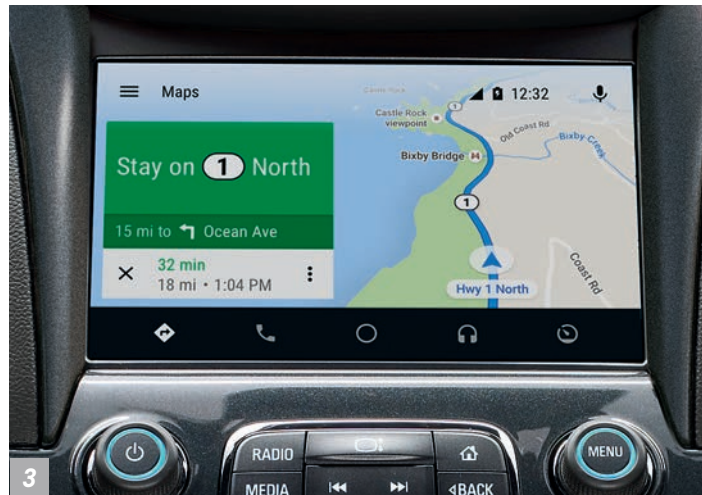
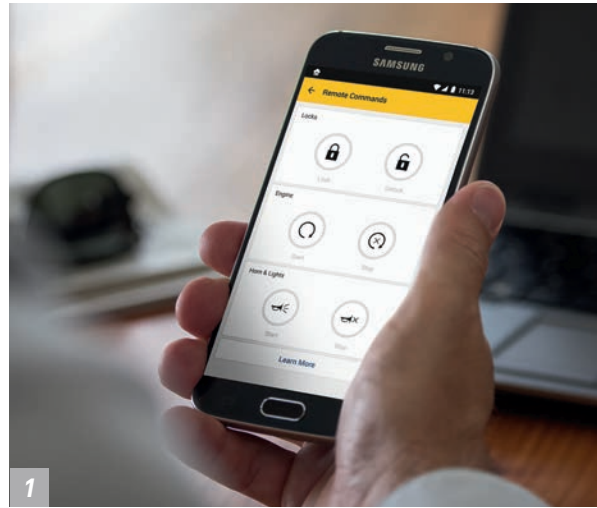
**WANT MORE INFO?
GO TO CHEVY.COM/IMPALA**

1. myChevrolet Mobile App! Simply download the app to your compatible smartphone and if your vehicle is properly equipped, you can start or turn off your engine, lock or unlock your doors² (requires paid subscription after trial), send destinations to your available navigation³ system, view key vehicle diagnostic information, set parking reminders and more. Requires available Remote Access Plan⁴

2. Apple CarPlay™ COMPATIBILITY⁵ With Apple CarPlay, you can simply and smartly connect with some of your most used iPhone® features, including Maps, Music, Messages and Phone, right on your touch-screen display.

3. EASY ACCESS TO YOUR SMARTPHONE. You can quickly and intuitively interact with select smartphone apps with support for Android Auto™⁶. This system takes some of your compatible Android™ phone's features and lets you access them on the touch-screen display. You can access your phone, text messages, music, navigation and more.

4. WIRELESS CHARGING. Conveniently charge your cell phone with wireless charging,⁷ standard on Impala Premier.



¹ Available on select Apple and Android devices. Service availability, features and functionality vary by vehicle, device and the plan you are enrolled in. Device data connection required. ² Requires paid subscription. Services are subject to User Terms and limitations. ³ Send-to-Navigation requires subscription. Service varies by vehicle model. Map coverage available in the United States, Puerto Rico and Canada. ⁴ Remote Access Plan does not include emergency or security services. Visit onstar.com for details and limitations. ⁵ Vehicle user interface is a product of Apple and its terms and privacy statements apply. Requires compatible iPhone and data plan rates apply. ⁶ Vehicle user interface is a product of Google and its terms and privacy statements apply. Requires the Android Auto app on Google Play and an Android compatible smartphone running Android 5.0 Lollipop or higher. Data plan rates apply. ⁷ The system wirelessly charges one PMA- or Qi-compatible mobile device. Some devices require an adaptor or back cover. To check for phone or other device compatibility, visit my.chevrolet.com/learn for details.

Apple CarPlay is a trademark of Apple Inc. iPhone is a trademark of Apple Inc., registered in the U.S. and other countries. Android Auto and Google Maps are trademarks of Google LLC.



Wi-Fi IN YOUR IMPALA. Chevrolet offers available built-in 4G LTE Wi-Fi¹ that provides a better in-vehicle experience than your smartphone. Our strong signal means you have a fast and reliable connection for up to seven devices.

¹ Service varies with conditions and location. Requires active OnStar service and paid AT&T data plan. Vehicle must be on or in accessory mode for Wi-Fi to function. Visit onstar.com for details and limitations.

**Impala Premier in
Blue Velvet Metallic
with available features.**

SAFETY

SAFETY STARTS WITH YOU. Safety or driver assistance features are no substitute for the driver's responsibility to operate the vehicle in a safe manner. The driver should remain attentive to traffic, surroundings and road conditions at all times. Visibility, weather and road conditions may affect feature performance. Read the vehicle Owner's Manual for more important feature limitations and information.



IMPALA PUTS SAFETY FIRST. THE SAME WAY YOU DO.

TECH THAT HELPS YOU STAY SAFE. Impala helps you watch out with available Forward Collision Alert, Lane Departure Warning, Lane Change Alert with Side Blind Zone Alert, and Rear Cross Traffic Alert.



FORWARD COLLISION ALERT. This available feature continually monitors how close your vehicle is to the vehicle in front of you. If the system determines that a front-end collision with a detected vehicle is imminent, it alerts the driver to a potential crash. It also warns the driver if their Impala is following a detected vehicle much too closely.



LANE DEPARTURE WARNING. If you unintentionally drift out of your lane without a turn signal, this available camera-based system sends an alert. The camera, mounted near the inside rearview mirror, reads traffic lane markings when identifiable and provides audible and visual alerts.



AVAILABLE LANE CHANGE ALERT WITH SIDE BLIND ZONE ALERT. Radar sensors in the rear corners of the vehicle help detect fast-approaching vehicles in the adjacent lanes as well as moving vehicles in the side mirror blind zones. Amber icons in the exterior mirrors indicate a vehicle's presence.



REAR CROSS TRAFFIC ALERT. This available radar-based feature alerts you to crossing vehicles behind your Impala when backing up. Audible warnings, as well as visual alerts on the rear vision camera screen, are triggered if approaching vehicles are detected.



REAR VISION CAMERA. When traveling in Reverse at low speeds, the standard rear vision camera provides a real-time view of the area immediately behind your Impala on the touch-screen display.



ADAPTIVE CRUISE CONTROL – ADVANCED. This available feature uses radar sensors to maintain your selected cruise speed and following gap distance to a detected vehicle ahead, automatically braking when necessary, even in stop-and-go traffic.



FORWARD AUTOMATIC BRAKING. Using the same radar sensors as Adaptive Cruise Control – Advanced, available Forward Automatic Braking can help mitigate front-end collisions with detected vehicles or even prevent them at very low speeds. The system alerts the driver if it detects an imminent collision.

“



”

OVERALL VEHICLE SCORE FOR SAFETY.¹
— NATIONAL HIGHWAY TRAFFIC SAFETY ADMINISTRATION

Impala LT in Cajun Red Tintcoat (extra-cost color) with available features and Chevrolet Accessories.



¹ Government 5-Star Safety Ratings are part of the National Highway Traffic Safety Administration's (NHTSA's) New Car Assessment Program (www.nhtsa.gov). ² A NOTE ON CHILD SAFETY: Always use seat belts and the correct child restraint for your child's age and size, even with airbags. Even in vehicles equipped with the Passenger Sensing System, children are safer when properly secured in a rear seat in the appropriate infant, child or booster seat. Never place a rear-facing infant restraint in the front seat of any vehicle equipped with an active frontal airbag. See your vehicle Owner's Manual and the child safety seat instructions for more safety information. ³ OnStar plan, working electrical system, cell service and GPS signal required. OnStar links to emergency services. ⁴ OnStar Advisors are certified by the International Academies of Emergency Dispatch. ⁵ Visit onstar.com for system limitations and details. OnStar plan, working electrical system, cell service and GPS signal required. OnStar links to emergency services.



10 AIRBAGS. With high-strength steel helping form a rigid structure around the passenger compartment and 10 standard airbags² Impala establishes a solid foundation for safety.

STABILITRAK[®] ELECTRONIC STABILITY CONTROL. This standard system automatically reacts to sensor data, which can help you stay on course in challenging weather and road conditions.

ONSTAR AUTOMATIC CRASH RESPONSE³
In a crash, built-in sensors can automatically connect you to a specially trained, Emergency Medical Dispatch-certified Advisor⁴ who can help you get the assistance you need – even if you can't ask for it. Advisors can use GPS technology to pinpoint your location and request emergency help. OnStar Automatic Crash Response is included in the OnStar Safety & Security Plan⁵

PERFORMANCE

Impala LT in Silver Ice Metallic with available features and Chevrolet Accessories.



305 HP

AVAILABLE 3.6L V6 ENGINE

AVAILABLE

264

LB.-FT. OF TORQUE¹

EPA-ESTIMATED

28 MPG

V6 HIGHWAY FUEL ECONOMY

RAZOR-SHARP REFLEXES. A stiff body structure and athletic stance allowed Impala engineers to precisely tune ride and handling. Premium electric rack-and-pinion steering provides crisp, responsive handling. The steering radius is enhanced by a variable-effort feature, which increases power assistance during low-speed maneuvers.

AVAILABLE 305-HP 3.6L V6 ENGINE.

Would you appreciate robust performance with an EPA-estimated 28 MPG on the highway? With this 305-horsepower 3.6L V6 matched to an electronically controlled 6-speed automatic transmission, Impala leaps from 0 to 60 mph in 6.8 seconds?

197-HP ECOTEC® 2.5L ENGINE.

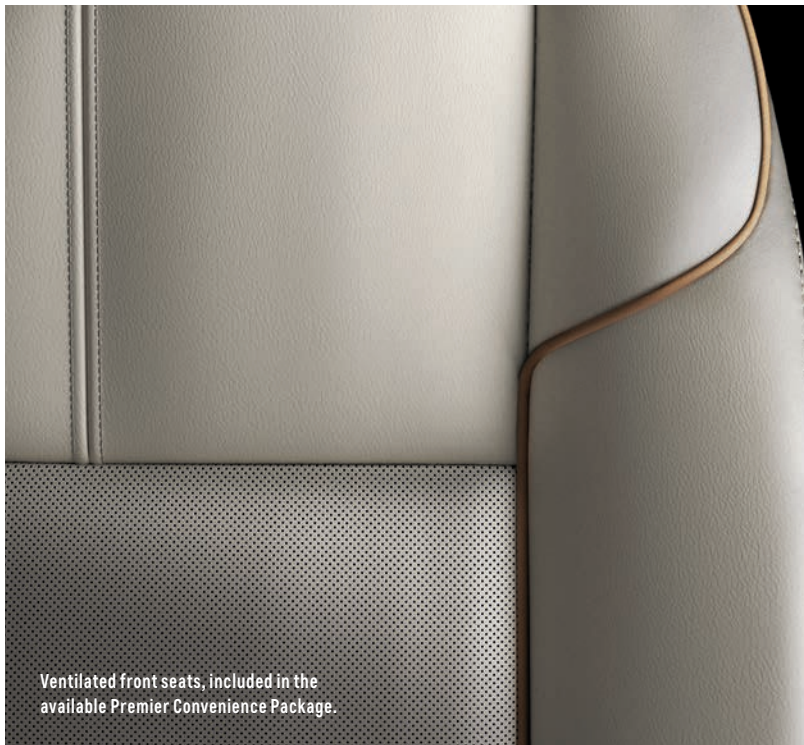
With Direct Injection and Variable Valve Timing, this 4-cylinder engine offers an EPA-estimated 22 MPG city/29 highway. In certain conditions, standard stop/start technology can automatically shut off the engine when stopped and enables a smooth transition when the brake pedal is released.

¹ Requires available 3.6L V6 engine. ² Based on initial vehicle movement.

SPECIAL FEATURES



Midnight Edition Appearance Package, includes special Midnight Edition 19" aluminum wheels with Black-painted pockets, Black Chevrolet bowtie emblems, body-color surround grille and rear spoiler, and Silver pedal covers. Available on LT and Premier.



Ventilated front seats, included in the available Premier Convenience Package.



Available power tilt-sliding sunroof with additional fixed rear skylight and power sunshade.

WHEELS



18" Steel with Fascia-Spoke Wheel Cover (Standard on LS)



18" Painted-Alloy (Standard on LT)



19" Special Midnight Edition Aluminum with Black-Painted Pockets (Available on LT and Premier)¹



19" Machined-Face Aluminum (Standard on Premier)



20" Aluminum (Available on Premier)

¹ Requires available Midnight Edition Appearance Package.

COLORS



SUMMIT WHITE¹



IRIDESCENT PEARL TRICOAT^{2,3}



SILVER ICE METALLIC



NIGHTFALL GRAY METALLIC



PEPPERDUST METALLIC³



CAJUN RED TINTCOAT^{2,3}



BLUE VELVET METALLIC

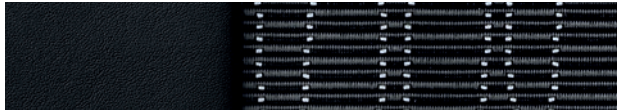
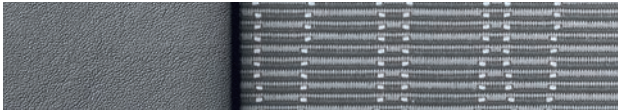


MOSAIC BLACK METALLIC³



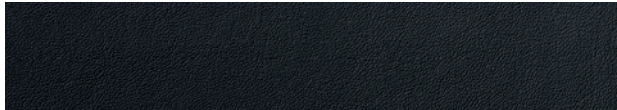
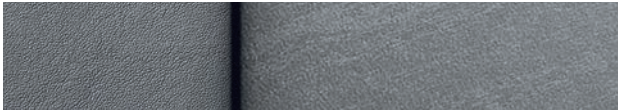
BLACK

FABRICS



Dark Titanium-Color Premium Cloth/Leatherette with Jet Black Accents^{1,2}

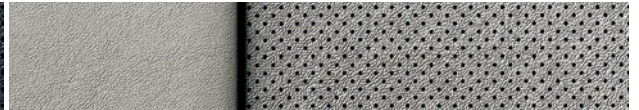
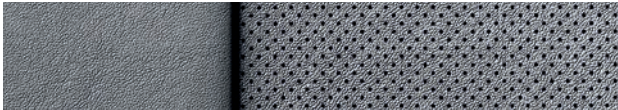
Jet Black Premium Cloth/Leatherette with Jet Black Accents²



Dark Titanium-Color Leather Appointments with Jet Black Accents³

Jet Black Leather Appointments with Jet Black Accents³

Light Wheat Leather Appointments with Jet Black Accents³



Dark Titanium-Color Perforated Leather Appointments with Jet Black Accents⁴

Jet Black Perforated Leather Appointments with Jet Black Accents⁴

Light Wheat Perforated Leather Appointments with Jet Black Accents⁴

¹ Standard on LS. ² Standard on LT. ³ Available on LT. Requires available LT Leather Package. ⁴ Standard on Premier.

SELECT VEHICLE FEATURES

IMPALA LS

ECOTEC 2.5L 4-cylinder engine with Direct Injection and stop/start technology
6-speed automatic transmission
10 airbags ¹
OnStar Safety & Security Plan ² with 1-month coverage, including Automatic Crash Response, Emergency Services, Stolen Vehicle Assistance, Roadside Assistance and Turn-by-Turn Navigation
StabiliTrak Electronic Stability Control System with Traction Control
Hill Start Assist
18" steel wheels with fascia-spoke wheel covers
Projector-beam halogen headlamps
Outside power-adjustable Black mirrors
Rear window defogger
Rear vision camera ³
Chevrolet Infotainment System ⁴ with 8-inch diagonal color touch-screen with motorized power up/down and hidden storage
SiriusXM [®] Radio ⁵ All Access Package with 3-month trial subscription
Bluetooth [®] wireless technology and wireless audio streaming ⁶
6-speaker sound system with 100-watt amplifier
Three USB ports: ⁷ two in center console, one behind radio touch-screen
Built-in 4G LTE Wi-Fi ^{®8} for up to seven devices, includes data trial for 1 month or 3 GB (whichever comes first)
Driver Information Center with full-color, high-resolution display, includes compass, trip/fuel information, vehicle information and vehicle settings

IMPALA LS (CONTINUED)

Keyless Open and Start
Single-zone electronic air conditioning system
Cruise control with Set and Resume Speed
Steering wheel-mounted audio and cruise controls
Tilt/telescoping steering column
Power windows with driver express-up, express-down on all windows
Premium Cloth/Leatherette seating with 60/40 split-folding rear seat
8-way power-adjustable driver seat with power lumbar control
Carpeted front and rear floor mats

IMPALA LT In addition to or replacing LS features, LT includes:

18" painted-alloy wheels
Upper and lower LED daytime running lamps
Outside heated power-adjustable mirrors with body-color caps, integrated turn signal indicators and ground illumination
Remote vehicle starter system
Dual-zone automatic climate control
Floor console with covered storage and rear-seat vents
Front passenger seat with power lumbar control
4-way manual-adjustable front-seat head restraints
Folding and adjustable rear-seat head restraints
Leather-wrapped steering wheel and shift knob

IMPALA PREMIER In addition to or replacing LT features, Premier includes:

3.6L DOHC V6 engine with Direct Injection
Dual-outlet exhaust with bright tips, integrated into fascia
Advanced safety features: Rear Cross Traffic Alert ³ and Lane Change Alert with Side Blind Zone Alert ³
Rear Park Assist ³
High-intensity discharge (HID) headlamps
Outside heated power-adjustable mirrors with chrome caps, integrated turn signal indicators and ground illumination
19" machined-face aluminum wheels
Chrome door handles with body-color strip
Lower bodyside chrome moldings
Chevrolet Infotainment System ⁴ with Navigation and 8-inch diagonal color touch-screen
Single-slot CD/MP3 player
Bose [®] Centerpoint [®] Surround Sound premium 11-speaker system
Wireless charging ⁹
120-volt power outlet
Universal Home Remote
Perforated leather-appointed seating
8-way power-adjustable front passenger seat
Heated front seats
Ambient instrument panel and door lighting
Cargo net

¹ A NOTE ON CHILD SAFETY: Always use seat belts and the correct child restraint for your child's age and size, even with airbags. Even in vehicles equipped with the Passenger Sensing System, children are safer when properly secured in a rear seat in the appropriate infant, child or booster seat. Never place a rear-facing infant restraint in the front seat of any vehicle equipped with an active frontal airbag. See your vehicle Owner's Manual and the child safety seat instructions for more safety information. ² Visit onstar.com for limitations and details. OnStar plan, working electrical system, cell service and GPS signal required. OnStar links to emergency services. Roadside service provided by Allstate Roadside Services. Stolen Vehicle Assistance requires armed factory-installed theft-deterrent system. ³ Read the vehicle Owner's Manual for important feature limitations and information. ⁴ Full functionality requires compatible Bluetooth and smartphone, and USB connectivity for some devices. Map coverage available in the United States, Puerto Rico and Canada. ⁵ If you decide to continue service after your trial, the subscription plan you choose will automatically renew thereafter and you will be charged according to your chosen payment method at then-current rates. Fees and taxes apply. To cancel you must call SiriusXM at 1-866-635-2349. See SiriusXM Customer Agreement for complete terms at siriusxm.com. All fees and programming subject to change. For more information about Travel Link and NavTraffic, visit siriusxm.com/infotainment. ⁶ Visit my.chevrolet.com/learnAbout/bluetooth to find out which phones are compatible with the vehicle. ⁷ Not compatible with all devices. ⁸ Service varies with conditions and location. Requires active OnStar service and paid AT&T data plan. Visit onstar.com for details and limitations. ⁹ The system wirelessly charges one PMA- or Qi-compatible mobile device. Some devices require an adaptor or back cover. To check for phone or other device compatibility, visit my.chevrolet.com/learn for details.

SPECIFICATIONS

● STANDARD ○ AVAILABLE – NOT AVAILABLE

	LS	LT	PREMIER
EXTERIOR			
Mirrors: Power-adjustable, manual-folding, Black Heated, power-adjustable, manual-folding with integrated turn signal indicators and ground illumination; body-color caps	●	–	–
Heated, power-adjustable, manual-folding with integrated turn signal indicators and ground illumination; chrome caps	–	●	–
Heated, power-adjustable, manual-folding with integrated turn signal indicators and ground illumination; chrome caps	–	–	●
ENGINE/CHASSIS			
Brake rotors: Duralife™ with corrosion-resistant technology	●	●	●
Engine: ECOTEC 2.5L DOHC 4-cylinder with Direct Injection, Variable Valve Timing and stop/start technology; 197 hp @ 6300 rpm, 191 lb.-ft. of torque @ 4400 rpm	●	●	–
3.6L DOHC V6 with Direct Injection, Variable Valve Timing and intake Variable Valve Lift; 305 hp @ 6800 rpm, 264 lb.-ft. of torque @ 5200 rpm	○	○	●
Exhaust system: Single-outlet, hidden	●	●	–
Dual-outlet, hidden, turned-down tips	○ ¹	○ ¹	–
Dual-outlet with bright tips, integrated into fascia	–	–	●
Steering: Power, electric-assisted, variable-effort	●	●	●
Transmission: 6-speed automatic with overdrive and manual mode	●	●	●

	LS	LT	PREMIER
SAFETY & SECURITY			
10 airbags: ² Dual-stage frontal airbags ² for driver and front passenger (includes Passenger Sensing System), seat-mounted side-impact and knee airbags for driver and front outboard passenger; seat-mounted side-impact for rear outboard seating positions; head-curtain airbags for front and rear outboard seating positions	●	●	●
Adaptive Cruise Control – Advanced ³ and Forward Automatic Braking ³	–	–	○ ⁴
Brakes: 4-wheel antilock, 4-wheel disc with Panic Brake Assist	●	●	●
Daytime running lamps: Integrated into headlamps	●	–	–
Lower auxiliary, LED	–	●	●
Door locks: Power-programmable with lockout protection and rear-door child safety locks	●	●	●
LATCH (Lower Anchors and Tethers for Children) system	●	●	●
OnStar Safety & Security Plan ⁵ with 1-month coverage, including Automatic Crash Response, Emergency Services, Stolen Vehicle Assistance, Roadside Assistance and Turn-by-Turn Navigation	●	●	●
StabiliTrak Electronic Stability Control System	●	●	●
Theft-deterrent system	●	●	●
Tire Pressure Monitoring System ⁶	●	●	●

	LS	LT	PREMIER
INTERIOR			
Assist handles: Driver, front passenger and rear outboard	●	●	●
Climate control: Single-zone electronic air conditioning	●	–	–
Dual-zone, automatic	–	●	●
Console: Floor, with covered storage	●	●	●
Power outlet: 12-volt auxiliary	●	●	●
120-volt, on rear of center console	–	○ ⁷	●
Sunroof: Power, tilt-sliding with additional fixed rear skylight and power sunshade	–	○ ⁸	○
SEATING			
Front buckets with reclining seatbacks; rear 60/40 split-folding seatback	●	●	●
Head restraints: 2-way adjustable, front	●	–	–
4-way adjustable, front	–	●	●
2-way adjustable, outboard rear	●	–	–
2-way adjustable, folding, outboard rear	–	●	●
Seats: Premium Cloth/Leatherette	●	●	–
Leather-appointed (perforated inserts on Premier)	–	○ ⁹	●
Seat adjuster: Driver 8-way power	●	●	●
Driver power lumbar control	●	●	●
Front passenger 4-way manual	●	●	–
Front passenger 8-way power	–	○ ⁹	●
Front passenger 2-way power lumbar control	–	●	●
Heated front seats	–	○ ¹⁰	●

¹ Requires available V6 engine. ² A NOTE ON CHILD SAFETY: Always use seat belts and the correct child restraint for your child's age and size, even with airbags. Even in vehicles equipped with the Passenger Sensing System, children are safer when properly secured in a rear seat in the appropriate infant, child or booster seat. Never place a rear-facing infant restraint in the front seat of any vehicle equipped with an active frontal airbag. See your vehicle Owner's Manual and the child safety seat instructions for more safety information. ³ Read the vehicle Owner's Manual for important feature limitations and information. ⁴ Requires available Premier Confidence Package. ⁵ Visit onstar.com for limitations and details. OnStar plan, working electrical system, cell service and GPS signal required. OnStar links to emergency services. Roadside service provided by Allstate Roadside Services. Stolen Vehicle Assistance requires armed factory-installed theft-deterrent system. ⁶ Excludes spare tire. ⁷ Requires available LT Convenience Package or LT Entertainment Package. ⁸ Requires available Sunroof and Spoiler Package or Midnight Edition Appearance Package and V6 engine. ⁹ Requires available LT Convenience Package, LT Leather Package and V6 engine. ¹⁰ Requires available LT Convenience Package.

SPECIFICATIONS (CONTINUED)

● STANDARD ○ AVAILABLE – NOT AVAILABLE

	LS	LT	PREMIER
ENTERTAINMENT			
Chevrolet Infotainment System ¹ with 8-inch diagonal color touch-screen display, AM/FM stereo, smartphone integration, Siri Eyes Free ² , Text Message Alerts ³ , Bluetooth ⁴ audio streaming ⁵ for select phones, Gracenote ⁶ database, natural language voice recognition, and Android Auto ⁷ and Apple CarPlay ⁸ compatibility; also includes the ability to browse, select and install apps ⁹ on the Chevrolet Infotainment System	●	●	–
Chevrolet Infotainment System ¹ with Navigation and 8-inch diagonal color touch-screen display, includes features listed above plus enhanced GPS navigation and SiriusXM NavTraffic ⁷ and Travel Link ⁷ with 3-month trial subscription	–	○ ⁸	●
SiriusXM Radio ⁷ All Access Package with 3-month trial subscription	●	●	●
Chevrolet Connected Access ⁹ including Vehicle Diagnostics and Chevrolet Smart Driver	●	●	●
Built-in 4G LTE Wi-Fi ¹⁰ for up to seven devices, includes data trial for 1 month or 3 GB (whichever comes first)	●	●	●

	LS	LT	PREMIER
WHEELS			
18" steel with fascia-spoke wheel cover	●	–	–
18" painted-alloy	–	●	–
19" Special Midnight Edition aluminum with Black-painted pockets	–	○ ¹¹	○ ¹¹
19" machined-face aluminum	–	–	●
20" aluminum	–	–	○ ¹²
PACKAGES			
LT Convenience Package: Heated driver and front passenger seats, heated leather-wrapped steering wheel, auto-dimming inside rearview mirror, Universal Home Remote, 120-volt power outlet, cargo convenience net, premium carpeted front and rear floor mats, and carpeted trunk mat	–	○	–
Sunroof and Spoiler Package: Tilt-sliding power sunroof with additional fixed rear skylight and power sunshade and rear spoiler	–	○ ¹³	–
Driver Confidence Package: ¹⁴ Rear Cross Traffic Alert, Rear Park Assist and Lane Change Alert with Side Blind Zone Alert	–	○ ¹⁵	–
LT Leather Package: Leather-appointed seating surfaces and 8-way power front passenger seat adjuster	–	○ ¹⁶	–

	LS	LT	PREMIER
PACKAGES (CONTINUED)			
LT Entertainment Package: Chevrolet Infotainment System ¹ with Navigation, Bose [®] Centerpoint [®] Surround Sound premium 11-speaker system, single-slot CD/MP3 player, 120-volt power outlet, ambient door lighting and ambient instrument panel lighting	–	○ ¹³	–
Midnight Edition Appearance Package: Special Midnight Edition 19" aluminum wheels with Black-painted pockets, Black Chevrolet bowtie emblems, body-color surround grille and rear spoiler, and Silver pedal covers	–	○ ¹⁷	○ ¹⁸
Premier Convenience Package: Ventilated front seats; heated leather-wrapped steering wheel; power tilt and telescoping steering column; memory for driver seat, outside mirror and steering column settings; premium carpeted front and rear floor mats; carpeted trunk mat; auto-dimming inside rearview mirror and outside heated power-adjustable mirrors with turn signal indicators, ground illumination and driver-side auto-dimming feature	–	–	○
Premier Confidence Package: Forward Collision Alert ¹⁴ , Lane Departure Warning ¹⁴ , Adaptive Cruise Control – Advanced ¹⁴ and Forward Automatic Braking ¹⁴ , 20" aluminum wheels and P245/40R20 all-season blackwall tires	–	–	○ ¹⁹

¹ Full functionality requires compatible Bluetooth and smartphone, and USB connectivity for some devices. Map coverage available in the United States, Puerto Rico and Canada. ² Requires available Chevrolet Infotainment System and compatible iPhone running iOS 6 or later. ³ Visit my.chevrolet.com/learnAbout/bluetooth to find out which phones are compatible with the vehicle. ⁴ Vehicle user interface is a product of Google and its terms and privacy statements apply. Requires the Android Auto app on Google Play and an Android compatible smartphone running Android 5.0 Lollipop or higher. Data plan rates apply. ⁵ Vehicle user interface is a product of Apple and its terms and privacy statements apply. Requires compatible iPhone and data plan rates apply. ⁶ Visit chevrolet.com/connectivity for more details. ⁷ If you decide to continue service after your trial, the subscription plan you choose will automatically renew thereafter and you will be charged according to your chosen payment method at then-current rates. Fees and taxes apply. To cancel you must call SiriusXM at 1-866-635-2349. See SiriusXM Customer Agreement for complete terms at siriusxm.com. All fees and programming subject to change. For more information about Travel Link and NavTraffic, visit siriusxm.com/infotainment. ⁸ Requires available LT Entertainment Package and V6 engine. ⁹ Standard connectivity available only to original purchaser for 10 years. Connected Access services are subject to change. Does not include safety services. Visit onstar.com for details and plan limitations. ¹⁰ Service varies with conditions and location. Requires active OnStar service and paid AT&T data plan. Visit onstar.com for details and limitations. ¹¹ Includes P245/45R19 all-season blackwall tires. Requires available Midnight Edition Appearance Package and available V6 engine (on LT model) and Jet Black interior and Black exterior color. ¹² Includes P245/40R20 all-season blackwall tires. ¹³ Requires available V6 engine. ¹⁴ Read the vehicle Owner's Manual for important feature limitations and information. ¹⁵ Requires available LT Convenience Package and V6 engine. ¹⁶ Requires available LT Convenience Package, V6 engine and leather-appointed seating. ¹⁷ Also includes P245/45R19 all-season blackwall tires. Requires available V6 engine and Jet Black interior and Black exterior color. ¹⁸ Requires Jet Black interior and Black exterior color. Not available with 20" aluminum wheels. ¹⁹ Requires available Premier Convenience Package. Not available with body-color/blacked-out grille.



CHEVROLET

COMPLETE CARE

Experience Chevrolet Complete Care, a comprehensive coverage, warranty and protection program that comes standard with every new 2019 Chevrolet Impala lease and purchase. Simply, it is designed around you, to make it easy to keep your Chevrolet like new – and give you the confidence you deserve when you need it most.

YOUR COMPREHENSIVE OWNER BENEFIT PROGRAM.

Includes one maintenance visit (oil change, tire rotation and multi-point vehicle inspection)¹

5 years/60,000 miles of Roadside Assistance and Courtesy Transportation²

3-year/36,000-mile Bumper-to-Bumper Limited Warranty²

5-year/60,000-mile Powertrain Limited Warranty²

6 years/100,000 miles of Rust-Through Protection.²

10 years of standard connectivity with Chevrolet Connected Access³

1-month trial of Chevrolet Connected Services⁴ and 1 month of OnStar Safety & Security Plan coverage.⁴

DIMENSIONS

Length	201.3"	Width	73.0"	Head Room (front/rear)	39.9"/37.4"
Wheelbase	111.7"	Front Track	62.2"	Leg Room (front/rear)	45.8"/39.8"
Height	58.9"	Rear Track	62.0"	Shoulder Room (front/rear)	57.9"/56.9"

MAXIMUM CAPACITIES

EPA-ESTIMATED FUEL ECONOMY

2.5L 4-cylinder	22 MPG city/29 highway/25 combined
3.6L V6	18 MPG city/28 highway/22 combined
3.6L V6 (emissions states)	19 MPG city/28 highway/22 combined

FUEL TANK (APPROXIMATE) 18.5 gallons

PASSENGER VOLUME 105.0 cubic feet/seats 5

CARGO VOLUME⁵ 18.8 cubic feet

OWNERSHIP EXTRAS

CHEVROLET



CHEVROLET.COM/WARRANTY

CHEVROLET



CHEVROLET.COM/ACCESSORIES



ONSTAR.COM

SIRIUSXM

SIRIUSXM.COM

NEW VEHICLE LIMITED WARRANTY

3-YEAR/36,000-MILE BUMPER-TO-BUMPER LIMITED WARRANTY Chevrolet will warrant each 2019 Impala from bumper to bumper for 3 years/36,000 miles (whichever comes first; see dealer for details), with no deductible, from the original in-service date of the vehicle, for warrantable repairs that are required as a result of defects due to materials and/or workmanship. Cosmetic corrosion resulting from defects is also covered under the Bumper-to-Bumper Limited Warranty. In addition, rust-through corrosion will be covered for 6 years/100,000 miles (whichever comes first). See dealer for details.

5-YEAR/60,000-MILE TRANSFERABLE POWERTRAIN LIMITED WARRANTY Every 2019 Impala comes with a 5-year/60,000-mile (whichever comes first) transferable Powertrain Limited Warranty. 24/7 Roadside Assistance and Courtesy Transportation are also offered for the duration of the Powertrain Limited Warranty. Please see your Chevrolet dealer for details.

¹ Maintenance visit must occur within first year of vehicle delivery. Service visit consists of ACDelco dexos1™ Full Synthetic Oil and Filter Change/Tire Rotation/MPVI. Does not include air filters. See participating dealer for other restrictions and complete details. ² Whichever comes first. See dealer for details. ³ Standard connectivity available only to original purchaser for 10 years. Connected Access services are subject to change. Does not include safety services. Visit onstar.com for details and plan limitations. ⁴ Connected Services include navigation services and Remote Access Plan, and 1 month/3 GB of 4G LTE data (whichever comes first) from vehicle delivery date. Services are subject to User Terms and limitations. Certain services require working electrical system, cell service and GPS signals. OnStar links to emergency services. Visit onstar.com for more details. ⁵ Cargo and load capacity limited by weight and distribution.

IMPORTANT INFORMATION

CHEVROLET CONNECTED SERVICES AND ONSTAR Effective May 1, 2018, available Chevrolet Connected Services have changed significantly. While many of the offered services are the same, available plans and pricing are different. Connected vehicle services require a paid connected vehicle services plan or trial and connected hardware, vehicle electrical system (including battery), wireless service and GPS satellite signals to be available and operating for features to function properly. OnStar acts as a link to existing emergency service providers. Visit onstar.com for coverage map, details and system limitations.

CHEVROLET OWNER CENTER (MY.CHEVROLET.COM) Everything you need to know. Anything you need to do. Your Chevrolet Owner Center makes it easy. Create your account today to get the most out of your new vehicle. Get special alerts and offers, schedule service, review your maintenance schedule, and view how-to videos specifically for your vehicle. All online, anytime. Visit the Owner Center today to register or take a tour.

ENGINES Chevrolet products are equipped with engines produced by GM Global Propulsion Systems or other suppliers to GM worldwide. The engines in Chevrolet products may also be used in other GM makes and models.

ASSEMBLY Chevrolet vehicles and their components are assembled or produced by different operating units of General Motors, its subsidiaries or suppliers to GM worldwide. We sometimes find it necessary to produce Chevrolet vehicles with different or differently sourced components than originally scheduled. Since some options may be unavailable when your vehicle is assembled, we suggest you verify that your vehicle includes the equipment you ordered and that, if there were changes, they are acceptable to you.

A NOTE ON CHILD SAFETY Always use seat belts and the correct child restraint for your child's age and size, even with airbags. Even in vehicles equipped with the Passenger Sensing System, children are safer when properly secured in a rear seat in the appropriate infant, child or booster seat. Never place a rear-facing infant restraint in the front seat of any vehicle equipped with an active frontal airbag. See your vehicle Owner's Manual and the child safety seat instructions for more safety information.

IMPORTANT WORDS ABOUT THIS CATALOG We have tried to make this catalog comprehensive and factual. We reserve the right, however, to make changes at any time, without notice, in prices, colors, materials, equipment,

specifications, models and availability. Specifications, dimensions, measurements, ratings and other numbers in this catalog and other printed materials provided at the dealership or affixed to vehicles are approximations based on design and engineering drawings, prototypes and laboratory tests. Your vehicle may differ due to variations in manufacture and equipment. Since some information may have been updated since the time of printing, please check with your Chevrolet dealer for complete details. Chevrolet reserves the right to lengthen or shorten the model year for any product for any reason or to start and end model years at different times. Certain vehicle features may lose their usefulness over time due to obsolescence from technological changes. Unless otherwise noted, all claims based on GM Large Car Sedan segment and latest available competitive information. Excludes other GM vehicles.

FLEET ORDERS Some standard content may be deleted on fleet orders. See dealer for details.

CHEVROLET OWNERSHIP EXPERIENCE Chevrolet is committed to enhancing the vehicle shopping and ownership experience through a wide array of programs. Visit chevrolet.com to build and price, find a vehicle, request a quote, compare vehicles, find financial tools or track your vehicle order. You'll also find information about 24-hour Roadside Assistance, Courtesy Transportation, Customer Assistance, GM Mobility, safety and current incentives.

CHEVROLET.COM/SAFETY Chevrolet is committed to keeping you and your family safe – from the start of your journey to your destination. That's why every Chevrolet is designed with a comprehensive list of safety and security features to help give you peace of mind.

GMMOBILITY.COM (1-800-323-9935) GM MobilitySM offers financial assistance for eligible adaptive equipment to make automotive travel easier for persons with disabilities or special transportation needs. To learn more about special GM Mobility offers, visit gmmobility.com.

THE BUYPOWER CARD The Chevrolet BuyPower Card – Every purchase you make with the BuyPower Card from Capital One* helps you earn toward an eligible new Chevrolet, Buick, GMC or Cadillac vehicle. There's no limit on the amount you can earn or redeem, and your Earnings don't expire. Visit chevroletbuypowercard.com/catalogs.

* Capital One, N.A. is the issuer of the BuyPower Card. General Motors ("GM") is responsible for the operation and administration of the Earnings program.



TWITTER.COM/CHEVROLET



YOUTUBE.COM/CHEVROLET



FACEBOOK.COM/CHEVROLET



INSTAGRAM.COM/CHEVROLET

GM, the GM logo, Chevrolet, the Chevrolet logo, and the slogans, emblems, vehicle model names, vehicle body designs and other marks appearing in this catalog are the trademarks and/or service marks of General Motors, its subsidiaries, affiliates or licensors. ©2018 OnStar LLC. All rights reserved. Sirius, XM, SiriusXM and all related marks and logos are trademarks of Sirius XM Radio Inc. The Bluetooth word mark is a registered trademark owned by Bluetooth SIG, Inc., and any use of such mark by Chevrolet is under license. Bose and Centerpoint are registered trademarks of the Bose Corp.

©2018 General Motors. All rights reserved. July 2018



FIND **NEW** **ROADS**[™]

CHEVROLET.COM