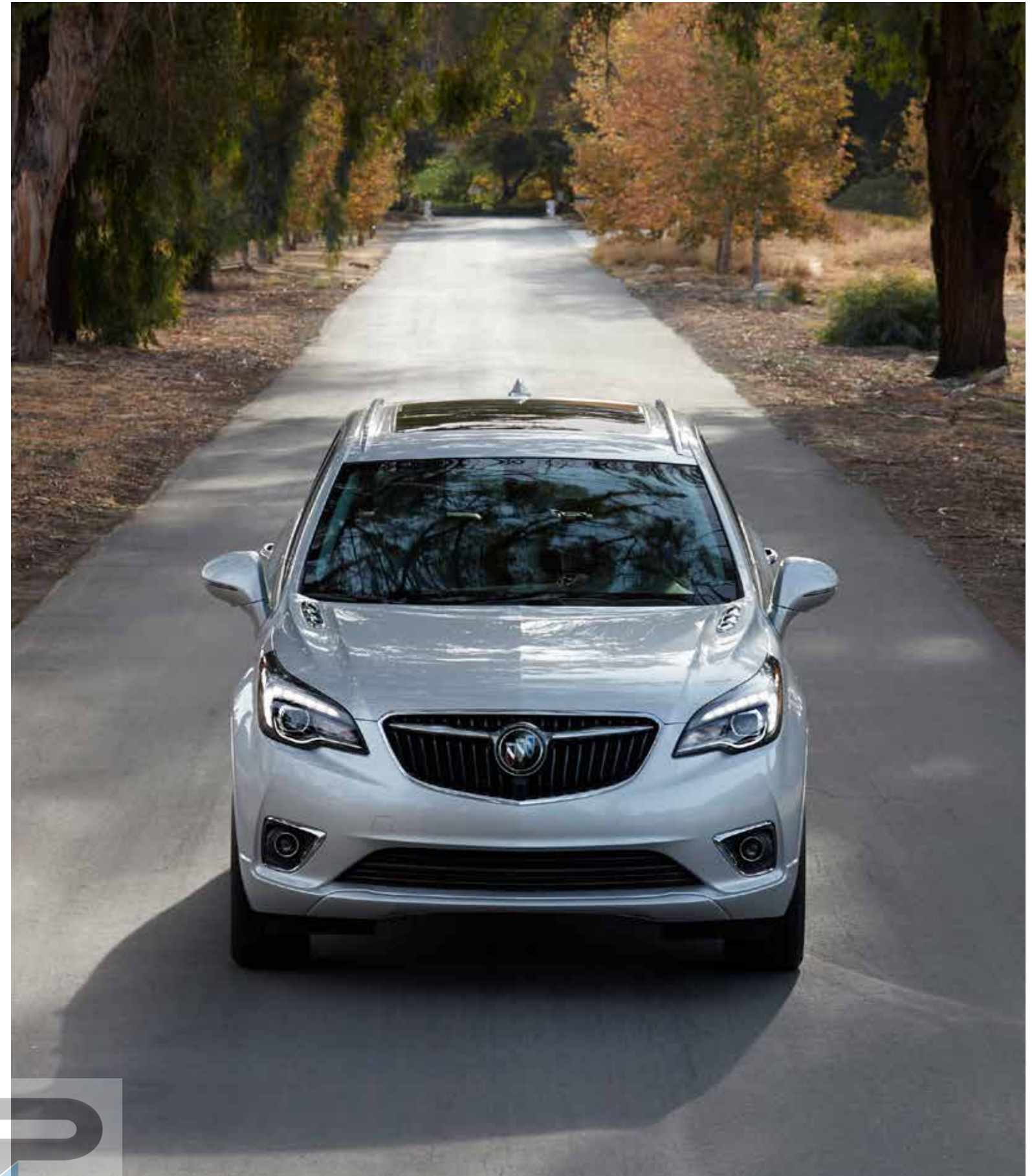




NEW 2019 BUICK ENVISION





## AN SUV THAT KNOWS HOW MUCH EVERY DRIVE MATTERS

The new Envision just seems to understand everything you need. With its responsive performance, intelligent innovations and an impeccably tailored interior hushed by QuietTuning™ technology, Envision is so in sync with your needs, you'll wonder how you ever lived without it.

Envision Premium II shown in Galaxy Silver Metallic with available features.





# DESIGNED TO REFLECT A HIGHER LEVEL OF REFINEMENT

A glance at its sculpted lines confirms that the new Envision is crafted to an exceptional degree of refinement. From its bold new grille to LED-accented headlamps and new low-profile LED-enhanced taillamps, the Envision design is elegant, yet athletic.



Dealer-installed accessory wheel shown (far right). Use only GM-approved tire and wheel combinations. See [buick.com/accessories](http://buick.com/accessories) for important tire and wheel information, or see your dealer.





Envision Essence interior shown in Light Neutral with Ebony accents and available features.



# THINK OF IT AS A DAY SPA YOU VISIT EVERY DAY

Inspiration for Envision's interior design came from the places you go to relax in style: boutique hotels, day spas and other quiet retreats. With its modern design, beautiful finishes and materials and Moon White ambient lighting, Envision is your sanctuary.

**SOOTHE YOUR SENSES** Envision comes standard with heated front seats that are eight-way power adjustable and include power lumbar support. An available heated steering wheel warms your hands. Looking to stay cool instead? Available cooled front seats are offered on Envision, too. Clearly, there is more to Envision's available French stitched, perforated leather-appointed seating than meets the eye.

**REAR SEATING THAT'S FIRST CLASS** Your rear-compartment occupants can also sit back and relax thanks to Envision's sliding second-row seating with adjustable recline. Available tri-zone HVAC automatic climate control allows everyone to define comfort on their own terms—and they have access to power ports<sup>1</sup> for smartphones and other personal devices.

<sup>1</sup>Not compatible with all devices.



Envision Premium II shown in Galaxy Silver Metallic with available features.



## WELCOME TO YOUR QUIET ZONE

QuietTuning technology with Active Noise Cancellation uses triple door sealing, acoustic laminated glass in the windshield and front windows, specific suspension tuning and many other measures to help reduce, block and absorb unwanted noise. So you can enjoy conversations with your passengers, quiet time for yourself or fully appreciate the audiophile-caliber sound from the available Bose® premium audio system with seven speakers and amplifier.





## VERSATILITY HAS FOUND ITS STYLE

Envision makes whatever you do look effortless.

**KEYLESS ENTRY** Never fumble for your keys again. The driver's door unlocks with the keyless fob in your pocket or purse.

**60/40 REAR SEATS** Envision gives you the flexibility to carry combinations of people and cargo. Transforming from a five-person SUV is easy thanks to 60/40 split rear seats that fold flat to expand cargo space.

**HANDS-FREE POWER LIFTGATE** Got your hands full? No problem. Simply kick your foot beneath the sensor on the left side of the rear bumper. With the keyless entry fob in your possession, the liftgate will open or close.



Envision Premium II interior shown in Dark Galvanized with Ebony accents and available features.



## UPGRADE YOUR SENSORY EXPERIENCE

Settle into Envision and you'll feel an instant connection. Scan the gauges in front of you, including an available Head-Up Display (HUD) that lets you quickly read critical information projected onto the windshield. And an available in-vehicle ionization system helps leave the air cleaner and fresher.





# AN SUV THAT FEELS LIKE A PERFORMANCE SEDAN

Press the Start button and a spirited response comes from one of two sources: the standard 2.5L engine with 197 hp and 192 lb-ft of torque or the available 2.0L Turbo engine with 252 hp and 295 lb-ft of torque. With the available 2.0L Turbo engine, a new 9-speed automatic transmission ensures power flows smoothly to the road.

**INTELLIGENT ALL-WHEEL DRIVE** To make the performance of Envision even more precise, there's available intelligent All-Wheel Drive with active twin clutch. It automatically adjusts torque to each wheel to optimize traction and respond before slip occurs. So whether it's a quick trip or a long journey, you'll drive with added confidence.

**HIPER STRUT FRONT SUSPENSION** Turn the steering wheel, and you'll feel the rewarding effects of the available HiPer Strut front suspension. It provides Envision with responsive steering and cornering while it helps dampen road noise and vibration. And Envision's tight turning radius makes for nimble maneuvers and easy parking.



Envision Premium II shown in Galaxy Silver Metallic with available features.



## SEE WHAT SAFETY TECHNOLOGY CAN DO FOR YOU

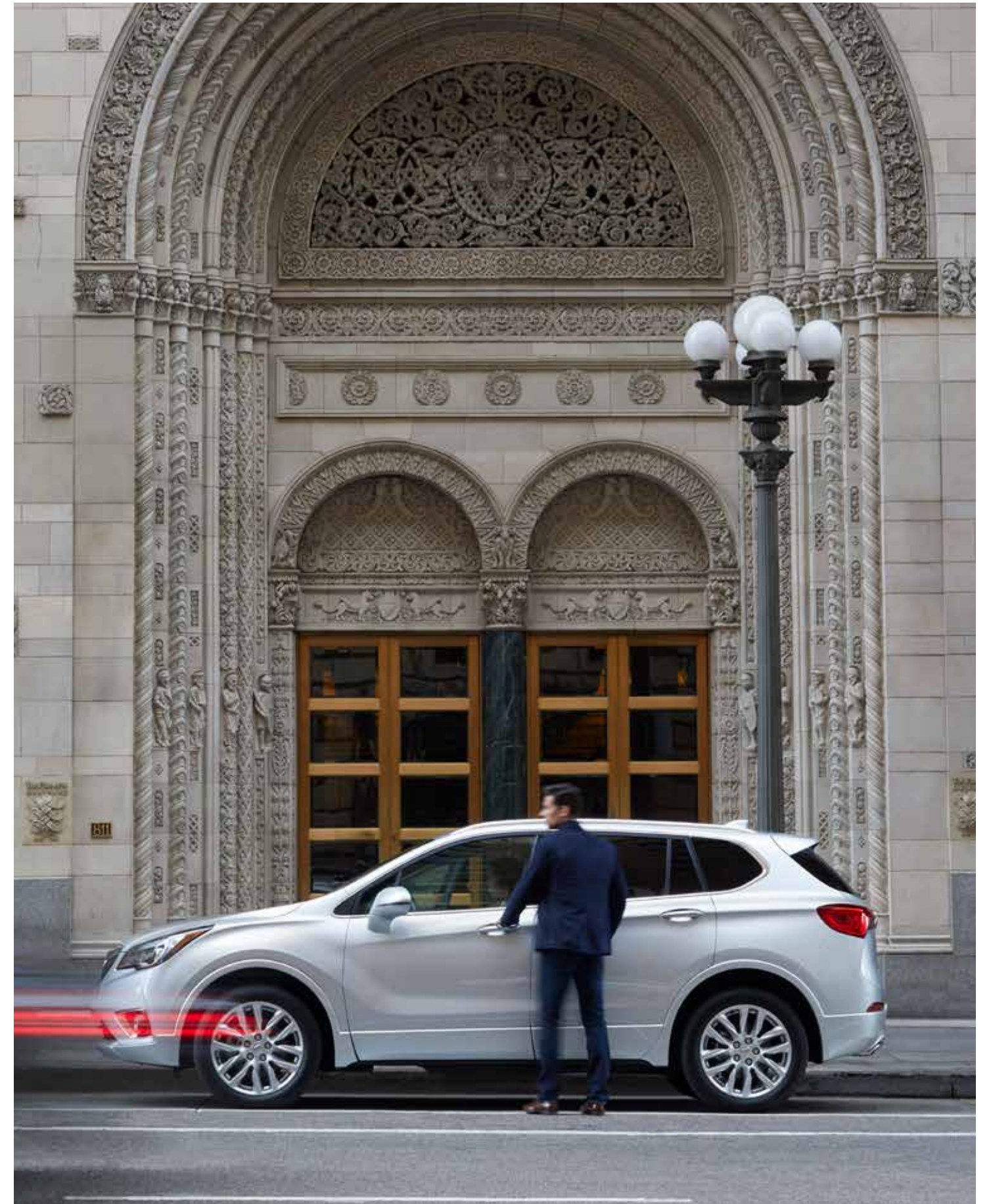
Envision uses an available combination of cameras, radars and sensors embedded in the vehicle to help you identify potential hazards around the vehicle.

**SURROUND VISION** During low-speed maneuvering, this available system provides a virtual bird's-eye view of what's around your vehicle on the infotainment screen. Four cameras help reduce blind spots as you slowly navigate even the tightest spaces with clarity and confidence.

**AUTOMATIC PARKING ASSIST** This available system helps you parallel and perpendicular park by automatically steering the vehicle into a detected parking space while you follow text commands on the Driver Information Center display, select gears and do all the braking and acceleration.

**REAR VISION CAMERA** To help you better navigate while backing up, the Rear Vision Camera shows you grid lines and live images of what's behind you on the 8-inch diagonal infotainment screen.

Safety or driver assistance features are no substitute for the driver's responsibility to operate the vehicle in a safe manner. The driver should remain attentive to traffic, surroundings and road conditions at all times. Visibility, weather and road conditions may affect feature performance. Read the vehicle Owner's Manual for more important feature limitations and information.



Envision Premium II shown in Galaxy Silver Metallic with available features.





## EVEN THE SEAT IS ON HIGH ALERT

Imagine a driver's seat that uses advanced technologies to warn you of potential hazards around your vehicle. That's one of the available safety features on the new Envision.

**LANE CHANGE ALERT WITH SIDE BLIND ZONE ALERT** Available Lane Change Alert with Side Blind Zone Alert provides side-mirror alerts to help you avoid detected vehicles moving in, or rapidly approaching, your side blind zone during a lane-change maneuver.

**LANE KEEP ASSIST WITH LANE DEPARTURE WARNING** Available Lane Keep Assist with Lane Departure Warning provides gentle steering wheel turns, and if necessary, Lane Departure Warning alerts to help you avoid crashes due to unintentionally drifting out of your lane when you are not actively steering and your turn signal is not activated.

**REAR CROSS TRAFFIC ALERT** When in Reverse, available Rear Cross Traffic Alert provides alerts to help you avoid crashing into approaching detected left or right cross traffic, such as when you're backing out of your driveway or a crowded parking space.

**SAFETY ALERT SEAT** When a collision-avoidance technology such as available Rear Cross Traffic Alert triggers an alert, the available Safety Alert Seat issues a warning of its own. The left and/or right side of the driver seat cushion gently vibrate to signal the direction of the approaching hazard. For some types of alerts, both sides of the seat vibrate at the same time, for example, if the object is in front of the vehicle.

**FORWARD COLLISION ALERT** If this available system detects that a front-end collision situation is imminent while following a detected vehicle, the system alerts you to a potential crash. It also alerts you if you are following a detected vehicle much too closely.

**FORWARD AUTOMATIC BRAKING** If this available system detects that a front-end collision situation is imminent while following a detected vehicle and you have not applied the brakes, the system automatically applies the brakes to help reduce the collision's severity. The system may even help avoid the collision at very low speeds.

Safety or driver assistance features are no substitute for the driver's responsibility to operate the vehicle in a safe manner. The driver should remain attentive to traffic, surroundings and road conditions at all times. Visibility, weather and road conditions may affect feature performance. Read the vehicle Owner's Manual for more important feature limitations and information.



# TECHNOLOGY THAT KEEPS YOU CONNECTED

Envision helps keep you seamlessly connected and entertained with its suite of available built-in technologies.

**NEW BUICK CONNECTED SERVICES** With a range of available plans, Buick Connected Services seamlessly links your digital life to your vehicle. Starting with Connected Access,<sup>1</sup> you'll get standard connectivity that enables services in your vehicle. Current services include Vehicle Diagnostics and Buick Smart Driver, which analyze your driving data and give you tips on how to improve your driving habits. Add the Remote Access Plan<sup>2</sup> to start and stop or lock and unlock a properly equipped vehicle via the available myBuick mobile app.<sup>2</sup> You can add a monthly data plan to your account at any time that allows you to stay connected on the go with your available in-vehicle 4G LTE Wi-Fi<sup>®</sup> hotspot.<sup>3</sup>

**myBUICK MOBILE APP<sup>2</sup>** Powerful and easy to use, the available myBuick mobile app lets you remotely connect to your vehicle from almost anywhere when you subscribe to Buick Connected Services. When properly equipped, you can unlock and lock your doors, remote-start or -stop your engine and get real-time diagnostics that check your vehicle's fuel status, tire pressure,<sup>4</sup> mileage and more. The myBuick mobile app is also Apple Watch<sup>®</sup>-compatible, so you can locate your Buick,<sup>5</sup> remote-start or -stop the engine, honk the horn and flash the lights and get walking directions to where it's parked—all right from your wrist.

**APPLE CARPLAY<sup>™</sup> COMPATIBILITY<sup>6</sup>** Just plug in your compatible iPhone<sup>®</sup> and you'll have easy access to your contacts, maps and apps that you're familiar with on your vehicle's 8-inch diagonal color touch-screen. You can also have Siri<sup>®</sup> send and read your text messages, and you can listen to all of your content from iTunes<sup>®</sup>, Apple Music<sup>™</sup> and other compatible audio apps.

**ANDROID AUTO<sup>™</sup> COMPATIBILITY<sup>7</sup>** Android Auto makes it easy to use the touch-screen display in your Envision to access your phone, texts and music. And with Google Maps, you can get voice-guided navigation, live traffic information, lane guidance and more while keeping your hands on the wheel and your eyes on the road.

**BUILT-IN WI-FI<sup>®</sup> HOTSPOT<sup>3</sup>** An available built-in Wi-Fi<sup>®</sup> hotspot supports up to seven devices from up to 50 feet away from the vehicle. So your passengers can use their favorite apps to stream movies, watch TV, play games, listen to music and check social media on the go.



<sup>1</sup>Standard connectivity available only to original purchaser for 10 years. See onstar.com for details and further plan limitations. Does not include safety services. Connected Access services are subject to change. <sup>2</sup>Requires compatible Apple<sup>®</sup> or Android<sup>™</sup> device and data connection. Remote services require paid plan. <sup>3</sup>Service varies with conditions and location. Requires active OnStar service and data plan. Data plans provided by AT&T<sup>®</sup>. Vehicle must be on or in accessory position for Wi-Fi<sup>®</sup> to function. <sup>4</sup>Does not monitor spare tire. <sup>5</sup>Service varies with conditions. Available in the U.S. only. <sup>6</sup>Vehicle user interface is a product of Apple<sup>®</sup> and its terms and privacy statements apply. Requires compatible

iPhone<sup>®</sup> and data plan rates apply. Apple CarPlay is a trademark of Apple, Inc. Siri, iPhone and iTunes are trademarks of Apple, Inc., registered in the U.S. and other countries. <sup>7</sup>Vehicle user interface is a product of Google<sup>™</sup> and its terms and privacy statements apply. Requires the Android Auto app on Google Play and an Android-compatible smartphone running Android 5.0 Lollipop or higher. Data plan rates apply. Android Auto is a trademark of Google LLC.





## ONSTAR SAFETY AND SECURITY

As you travel with the ones you care about most, available OnStar®<sup>1</sup> is with you to empower every moment. With a paid OnStar service plan, you can have a 24/7 lifeline to specially trained Advisors, ready to help if you've been in a crash, your car's been stolen, you're lost or you need Roadside Assistance.<sup>2</sup>

**EMERGENCY HELP WHEN IT MATTERS MOST** Using built-in sensors, available Automatic Crash Response<sup>3</sup> can connect you to an Emergency Medical Dispatch-Certified Advisor<sup>4</sup> immediately after a crash to help get you the care you need, even if you can't ask for it. Using Injury Severity Prediction technology, these specially trained Advisors<sup>4</sup> can notify first responders about the likelihood of serious injury so they can provide help right away. You can feel confident knowing you have a team, 24/7, to get you the assistance you need.

**SECURITY YOU CAN COUNT ON** If your vehicle is stolen, you can be assured OnStar Advisors are ready to take action with available Stolen Vehicle Recovery. Once a vehicle is reported stolen, OnStar Advisors can work with the police to help recover it. They can use GPS technology to pinpoint its location, slow the vehicle if conditions are safe and even prevent it from being restarted. And with available Theft Alarm Notification,<sup>5</sup> if your vehicle alarm sounds, we can let you know via text, email or a phone call. One simple call puts a team into action to help recover your vehicle quickly and safely.

OnStar service plans and Connected Services have changed significantly. While many of the offered services are the same, available plans and pricing are different. Visit [onstar.com](http://onstar.com) to review all the details and limitations.

<sup>1</sup>Visit [onstar.com](http://onstar.com) for coverage map, details and limitations. <sup>2</sup>Roadside service provided by Allstate Roadside Services. <sup>3</sup>OnStar plan, working electrical system, cell service and GPS signal required. OnStar links to emergency services. <sup>4</sup>OnStar Advisors are certified by the International Academies of Emergency Dispatch. <sup>5</sup>Requires armed GM factory-installed theft-deterrent system. Additional texting and data rates apply.



FEATURES				
	ENVISION (1SV) AND PREFERRED			
	ESSENCE	PREMIUM	PREMIUM II	
● STANDARD ○ AVAILABLE — NOT AVAILABLE				
HANDS-FREE POWER LIFTGATE	●	●	●	●
KEYLESS OPEN AND START	●	●	●	●
HEATED FRONT SEATS	●	●	●	●
REAR VISION CAMERA <sup>1</sup>	●	●	●	●
REAR PARK ASSIST <sup>1</sup>	●	●	●	●
APPLE CARPLAY™ COMPATIBILITY <sup>2</sup>	●	●	●	●
ANDROID AUTO™ COMPATIBILITY <sup>3</sup>	●	●	●	●
BUILT-IN WI-FI® HOTSPOT <sup>4</sup>	○	○	○	○
HEATED STEERING WHEEL	—	●	●	●
PERFORATED, LEATHER-APPOINTED SEATING	—	●	●	●
HEATED REAR OUTBOARD SEATS	—	●	●	●
TRI-ZONE CLIMATE CONTROL	—	●	●	●
DRIVER MEMORY SETTINGS	—	●	●	●
LANE CHANGE ALERT WITH SIDE BLIND ZONE ALERT <sup>1</sup>	—	●	●	●
PANORAMIC MOONROOF	—	○	○	○
AIR IONIZER	—	—	●	●
FRONT RAINSENSE WIPERS	—	—	●	●
SAFETY ALERT SEAT <sup>1</sup>	—	—	●	●
LANE KEEP ASSIST WITH LANE DEPARTURE WARNING <sup>1</sup>	—	—	●	●
FORWARD COLLISION ALERT <sup>1</sup>	—	—	●	●
8" DIAGONAL MULTICOLOR DRIVER INFORMATION CENTER	—	—	●	●
ALL-WHEEL DRIVE	○ <sup>5</sup>	○	—	—
INTELLIGENT ALL-WHEEL DRIVE WITH ACTIVE TWIN CLUTCH	—	—	●	●
WIRELESS CHARGING <sup>6</sup>	—	—	—	●
COOLED FRONT SEATS	—	—	—	●
AUTOMATIC PARKING ASSIST (Includes Front and Rear Park Assist) <sup>1</sup>	—	—	—	●
HEAD-UP DISPLAY	—	—	—	●
SURROUND VISION <sup>1,7</sup>	—	—	—	○

PACKAGES				
	ENVISION (1SV) AND PREFERRED			
	ESSENCE	PREMIUM	PREMIUM II	
● STANDARD ○ AVAILABLE — NOT AVAILABLE				
DRIVER CONFIDENCE PACKAGE: <sup>1</sup> Includes Adaptive Cruise Control-Advanced, Surround Vision and Forward Automatic Braking	—	—	—	○
BUICK INTERIOR PROTECTION PACKAGE: Includes the following dealer-installed accessories: front and rear all-weather floor mats and all-weather cargo mat (not available with Interior Luxury Package or Road Trip Package)	○ <sup>5</sup>	○	○	○
CARGO PACKAGE: Includes the following dealer-installed accessories: cargo shade and cargo net	○ <sup>5</sup>	○	○	○
INTERIOR LUXURY PACKAGE: Includes the following dealer-installed accessories: illuminated front-door sill plates and premium carpeted floor mats (not available with Buick Interior Protection Package)	○ <sup>5</sup>	○	○	○
ACTIVE PACKAGE: Includes the following dealer-installed accessories: Trailing Package and integrated cargo liner	○ <sup>5</sup>	○	○	○
ROAD TRIP PACKAGE: Includes the following dealer-installed accessories: roof rack crossrails and all-weather floor mats (not available with Buick Interior Protection Package)	—	○	○	○
TRAILERING PACKAGE: Includes the following dealer-installed accessories: trailer hitch and wiring harness (included and only available with Active Package)	○ <sup>5</sup>	○	○	○

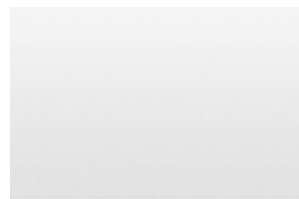
DIMENSIONS (INCHES)		CAPACITIES	
Wheelbase	108.3	Standard engine on Envision (1SV), Preferred and Essence	Standard engine on Premium and Premium II
Overall length	183.7	Engine Type	2.5L DOHC SIDI with VVT
Body width	72.4	Horsepower	197
Overall height	66.8	Torque	192 lb-ft
Track width, front/rear	62.0/62.0	EPA-estimated mpg	22 city/29 hwy FWD, 21 city/27 hwy AWD
Head room, front/rear	40.0/38.5	Fuel Tank (approx.)	17.3 gallons
Shoulder room, front/rear	57.0/55.8	Cargo Capacity <sup>8</sup>	With seats up: 26.9 cu. ft. Seats down: 57.3 cu. ft.
Hip room, front/rear	54.4/53.1		
Leg room, front/rear	40.9/37.5		

<sup>1</sup>Read the vehicle Owner's Manual for important feature limitations and information. <sup>2</sup>Vehicle user interface is a product of Apple® and its terms and privacy statements apply. Requires compatible iPhone® and data plan rates apply. Apple CarPlay is a trademark of Apple, Inc. Siri, iPhone and iTunes are trademarks of Apple, Inc., registered in the U.S. and other countries. <sup>3</sup>Vehicle user interface is a product of Google™ and its terms and privacy statements apply. Requires the Android Auto app on Google Play and an Android™-compatible smartphone running Android 5.0 Lollipop or higher. Data plan rates apply. Android Auto is a trademark of Google LLC. <sup>4</sup>Visit onstar.com for system limitations. Service varies with conditions and location. Requires active OnStar service and data plan. Data plans provided by AT&T® <sup>5</sup>Available on Preferred model only. <sup>6</sup>The system wirelessly charges one PMA- or Qi-compatible mobile device. Some phones have built-in wireless charging technology and others require a special adapter/back cover. To check for phone or other device compatibility, see my.buick.com/learn or consult your carrier. <sup>7</sup>Requires Driver Confidence Package. <sup>8</sup>Cargo and load capacity limited by weight and distribution.

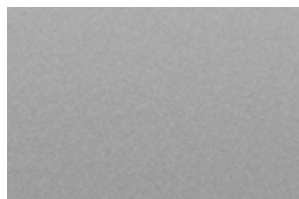




**EXTERIOR COLORS**



Summit White<sup>1</sup>



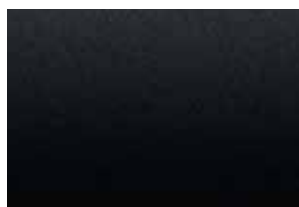
Galaxy Silver Metallic<sup>2</sup>



Chili Red Metallic<sup>2</sup>



Satin Steel Metallic<sup>2</sup>



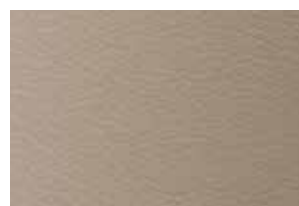
Ebony Twilight Metallic<sup>2</sup>



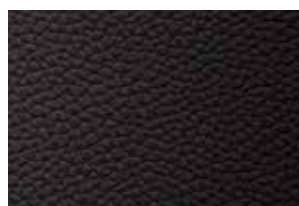
Bronze Alloy Metallic<sup>2</sup>

<sup>1</sup>Not available on Preferred trim level. <sup>2</sup>Additional charge; premium paint. Color not available on Envision (1SV) trim level.

**INTERIOR COLORS**



Light Neutral Cloth<sup>3</sup> or Perforated Leather-Appointed Seating<sup>4</sup>



Ebony Perforated Leather-Appointed Seating<sup>4</sup>



Dark Galvanized Perforated Leather-Appointed Seating<sup>4,5</sup>

Ebony accents included with all interior colors.

<sup>3</sup>Standard on Envision (1SV) and Preferred trim levels. <sup>4</sup>Not available on Envision (1SV) and Preferred trim levels. <sup>5</sup>Not available with Chili Red Metallic or Bronze Alloy Metallic.

**WHEELS**



18" 10-Spoke Aluminum With Blade Silver Painted Finish  
Standard on Envision (1SV) and Preferred.



18" 10-Spoke Aluminum With Polished Finish  
Standard on Essence.



19" 12-Spoke Aluminum With Manoogian Silver Finish  
Standard on Premium and Premium II.



19" 10-Spoke Aluminum, Bright Machine-Faced With Midnight Silver Painted Finish  
Dealer-installed accessory, only available on AWD models<sup>6</sup>

<sup>6</sup>Use only GM-approved tire and wheel combinations. See [buick.com/accessories](http://buick.com/accessories) for important tire and wheel information, or see your dealer.



# IMPORTANT WORDS

We have tried to make this catalog comprehensive and factual. We reserve the right, however, to make changes at any time, without notice, in prices, colors, materials, equipment, specifications, models and availability. Specifications, dimensions, measurements, ratings and other numbers in this catalog and other printed materials provided at the dealership or affixed to vehicles are approximations based on design and engineering drawings, prototypes and laboratory tests. Your vehicle may differ due to variations in manufacture and equipment. Since some information may have been updated since the time of printing, please check with your Buick dealer for complete details. Buick reserves the right to lengthen or shorten the model year for any product for any reason, or to start and end model years at different times. Certain vehicle features may lose their usefulness over time due to obsolescence from technological changes. Unless otherwise noted, all claims based on GM Compact SUV segment and latest available competitive information. Excludes other GM vehicles.

**NEW-VEHICLE LIMITED WARRANTY** This warranty is for GM vehicles registered in the USA. See your Buick dealer for terms and conditions.

4 years/50,000 miles (whichever comes first): Bumper-to-Bumper Limited Warranty. The entire vehicle is warranted for repairs, including parts and labor, to correct defects in materials or workmanship. The warranty covers towing to the nearest Buick dealership, and there is no deductible for warranty repairs during the warranty period. The warranty transfers automatically with vehicle ownership during the warranty period.

6 years/70,000 miles (whichever comes first): Transferable Powertrain Limited Warranty plus Roadside Assistance and Courtesy Transportation.

6 years/100,000 miles (whichever comes first): Body and sheet metal components are warranted against rust-through corrosion.

**AN IMPORTANT NOTE ABOUT ALTERATIONS AND WARRANTIES** Installations or alterations to the original equipment vehicle (or chassis) as distributed by General Motors are not covered by the General Motors New-Vehicle Limited Warranty. The special body company, assembler, equipment installer or upfitter is solely responsible for warranties on the body or equipment and any alterations (or any effect of the alterations) to any of the parts, components, systems or assemblies installed by GM. General Motors is not responsible for the safety or quality of design features, materials or workmanship of any alterations by such suppliers.

**ASSEMBLY** Buick vehicles and their components are assembled or produced by different operating units of General Motors, its subsidiaries or suppliers to GM worldwide. We sometimes find it necessary to produce Buick vehicles with different or differently sourced components than originally scheduled. Since some options

may be unavailable when your vehicle is assembled, we suggest that you verify that your vehicle includes the equipment you ordered or, if there are changes, that they are acceptable to you.

**ENGINES** Buick products are equipped with engines produced by GM Powertrain or other suppliers to GM worldwide. The engines in Buick products may also be used in other GM makes and models.

**TRAILERING AND OFF-ROAD DRIVING INFORMATION** Please go to [buick.com](http://buick.com) and carefully review the vehicle Owner's Manual for important safety information about trailering or off-road driving in your vehicle.

**ONSTAR AND BUICK CONNECTED SERVICES** Connected vehicle services require a paid connected vehicle services plan or trial, connected hardware, vehicle electrical system (including battery), wireless service and GPS satellite signal to be available and operating for features to function properly. OnStar acts as a link to existing emergency service providers. Visit [onstar.com](http://onstar.com) for coverage map, details and system limitations.

**A NOTE ON CHILD SAFETY** Always use seat belts and the correct child restraint for your child's age and size, even with airbags. Even in vehicles equipped with the Passenger Sensing System, children are safer when properly secured in a rear seat in the appropriate infant, child or booster seat. Never place a rear-facing infant restraint in the front seat of any vehicle equipped with an active frontal airbag. See your vehicle Owner's Manual and child safety seat instructions for more safety information.

**FLEET ORDERS** Some standard content may be deleted with fleet orders. See dealer for details.

**GMMOBILITY.COM (1-800-323-9935)** GM Mobility offers financial assistance for eligible adaptive equipment to make automotive travel easier for persons with disabilities or special transportation needs. To learn more about special GM Mobility offers, visit [gmmobility.com](http://gmmobility.com).

GM, the GM logo, Buick, the Buick emblem, OnStar, the OnStar emblem and the slogans, emblems, vehicle model names, vehicle body designs and other marks appearing in this catalog are the trademarks and/or service marks of General Motors, its subsidiaries, affiliates or licensors. Sirius, XM and all related marks and logos are trademarks of SiriusXM Radio, Inc. The Facebook logo is a trademark of Facebook, Inc. The Twitter logo is a trademark of Twitter, Inc. Android, Android Auto, Google Play, YouTube and other marks are trademarks of Google LLC. Apple CarPlay, Siri, iPhone and iTunes are trademarks of Apple, Inc. The Instagram logo is a trademark of Instagram, Inc. ©2018 General Motors. All rights reserved.

To learn more about why Certified Service is the perfect companion for your Envision, visit [mycertifiedservice.com](http://mycertifiedservice.com).

