



2019 BUICK ENCLAVE





## TOMORROW'S SUV FOR TODAY'S FAMILY

Buick Enclave combines three rows of luxury seating for up to seven with SUV capability to create a premium experience where every moment feels extraordinary. Enclave's striking shape flows seamlessly from its winged headlamps with LED signature lighting all the way to its sculpted rear profile. It's a fusion of form and function that ensures time spent together is time well spent.



Enclave Premium shown in Satin Steel Metallic with available features.



# SMART MADE STYLISH

Wherever you're headed, Enclave helps you arrive with style and purpose. Every detail doubles as a statement. Dynamic lines convey Enclave's athletic performance. The intricate surfaces of the grille embody its elevated design. And a hands-free power liftgate reflects its suite of intuitive features. Style and substance have never worked so well together.



Enclave Premium shown in Satin Steel Metallic with available features. Bottom right, available dealer-installed accessories shown.







Enclave Premium interior shown in Brandy with Ebony accents and available features.

# WHERE TIME TOGETHER BECOMES TIME WELL SPENT

**THOUGHTFUL APPOINTMENTS** Warm wood tones, brushed-chrome accents and heated first-row seating with available ventilation and leather appointments come together to delight your senses.

**POWER MOONROOF** At the touch of a button, tilt or slide Enclave's available power moonroof with rear fixed skylight to treat your passengers to expansive views of the sky.

**IN-VEHICLE AIR IONIZER** The available in-vehicle air ionizer is designed to help keep the air in your cabin cleaner and fresher by reducing pollen, dust and debris.

**CARGO VERSATILITY** Around the block or out for the weekend, Enclave makes room for up to seven people with flexible cargo space and three rows of first-class seating.

**QUIETTUNING™ TECHNOLOGY** To help make sure nothing interrupts you and your passengers' time together, Enclave utilizes triple door seals, acoustic laminated glass in the windshield and front side windows, specific suspension tuning and many other measures to help reduce, block and absorb unwanted noise.





**SMART SLIDE SECOND ROW** Smart Slide second-row seating makes it easy to access the third row. The Smart Slide passenger-side seat pitches as it slides for easy access even with an empty forward-facing child seat installed using the LATCH system.

**POWER-FOLDING THIRD ROW** With available third-row power-folding seats, you can lower and raise the backs of the 60/40 split-folding third-row seats with the touch of a button. It's the kind of cargo flexibility your on-the-go life demands.

**EASY-TO-LOAD CARGO SPACE** Enclave offers more than 97 cubic feet of total space for cargo<sup>1</sup> when the second- and third-row seats are folded flat. A 10-inch-deep under-floor storage area offers additional secure space for your valuables.

**HANDS-FREE POWER LIFTGATE WITH LED LOGO PROJECTION** Access your cargo area without lifting a finger thanks to the standard hands-free power liftgate. A convenient LED illumination marks where to kick, making the liftgate easy to activate even when your hands are full.

<sup>1</sup>Cargo and load capacity limited by weight and distribution.



Enclave Premium shown in Satin Steel Metallic with available features.



## POWERFUL, PURPOSEFUL PERFORMANCE

Enclave delivers the perfect blend of power, efficiency<sup>1</sup> and responsiveness. At the heart of its excellent driving performance is a 310-horsepower V6 engine and available intelligent All-Wheel Drive with active twin clutch. The drivetrain works in tandem with other advanced features to deliver a smooth, responsive ride, even when the weather is less than ideal. And with up to 5,000 lbs<sup>2</sup> of available trailering capability with the available Trailering Package, Enclave lets you take along more on every getaway.

<sup>1</sup>EPA-estimated mpg: 18 city/26 hwy (FWD); 17 city/25 hwy (AWD). <sup>2</sup>Before you buy a vehicle or use it for trailering, carefully review the trailering section of the Owner's Manual. The weight of passengers, cargo and options or accessories may reduce the amount you can tow.





## CONFIDENCE FOR THE LONG HAUL

**310-HP V6 ENGINE** Enclave's 3.6L V6 engine works in tandem with an advanced 9-speed automatic transmission to deliver 310 horsepower. Enclave offers impressive fuel efficiency, too, thanks in part to Stop/Start technology, which automatically shuts down the engine when you come to a stop under certain driving conditions. Enclave with FWD achieves an EPA-estimated 18 city/26 hwy mpg or 17 city/25 hwy mpg with AWD.

**INTELLIGENT ALL-WHEEL DRIVE** When enabled, available intelligent All-Wheel Drive with active twin clutch automatically activates when you need it most to deliver optimal power and traction to the wheels with the best grip when road conditions are less than ideal.

**FIVE-LINK REAR SUSPENSION** The innovative five-link rear suspension system helps assure a smooth ride and confident handling by providing responsive steering, impressive cornering and minimal noise and vibration.

**UP TO 5,000 LBS<sup>2</sup> TRAILERING** Redefine your weekend routine with Enclave's available Trailering Package, offering the confidence and convenience of up to 5,000 lbs of available towing capability.<sup>2</sup>

**TRACTION SELECT** With Traction Select on All-Wheel-Drive models, you can switch seamlessly to Front-Wheel Drive to optimize performance as terrain and weather conditions change.

<sup>1</sup>Use only GM-approved tire and wheel combinations. See [buick.com/accessories](http://buick.com/accessories) for important tire and wheel information, or see your dealer. <sup>2</sup>Before you buy a vehicle or use it for trailering, carefully review the trailering section of the Owner's Manual. The weight of passengers, cargo and options or accessories may reduce the amount you can tow.



Enclave Premium shown in Satin Steel Metallic with available features. Lower right, Enclave Premium shown in Ebony Twilight Metallic with available features and dealer-installed accessory wheels.<sup>1</sup> 20-inch ultra-bright machine-faced with Satin Graphite painted finish.



Enclave Avenir shown in Dark Slate Metallic with available features.



# AVENIR: THE HIGHEST EXPRESSION OF BUICK LUXURY

By placing timeless design over passing trends, Enclave Avenir allows you to experience Buick luxury like never before. Every detail reflects a heightened level of refinement. Discover the intricately designed Enclave Avenir grille and exclusive 20-inch aluminum wheels with Pearl Nickel finish. Study the sweeping surfaces, wood-tone trim and leather-appointed first- and second-row seating of the exclusive Chestnut or Ebony interior.

And enjoy the modern convenience of standard amenities such as built-in Navigation,<sup>1</sup> wireless charging<sup>2</sup> and an 8-inch diagonal reconfigurable Driver Information Center. Wherever you look, it's easy to see that the standards of luxury have been raised.

<sup>1</sup>Map coverage available in the United States, Puerto Rico and Canada. <sup>2</sup>The system wirelessly charges one PMA- or Qi-compatible mobile device. Some phones have built-in wireless charging technology and others require a special adapter/back cover. To check for phone or other device compatibility, see [my.buick.com/learn](http://my.buick.com/learn) or consult your carrier.







Enclave Avenir interior shown in Chestnut with Ebony accents and available features.

**PREMIUM MATERIALS** From its sweeping surfaces to its meticulously crafted wood-tone trim, Enclave Avenir welcomes you into an environment where each tone and texture conveys the highest level of refinement.

**AUTOMATIC HEATED AND VENTILATED SEATING** When your Enclave Avenir is remotely started, this innovative feature automatically activates the heated and ventilated front seats to help you feel instantly at ease. There's no need to modify the settings as you drive, as they will continue to self-adjust based on interior/external temperature sensors and your personal settings.

**SURROUND VISION** With an overhead virtual bird's-eye view of the scene around the vehicle shown on the center-stack display, Surround Vision helps you park and avoid collisions with nearby objects during low-speed maneuvering. Using a sophisticated suite of integrated cameras, Surround Vision helps you avoid obstacles, reduce blind spots and navigate even the tightest spaces with clarity and confidence.

**ADVANCED SUSPENSION** The available Continuously Variable Real-Time Damping suspension system helps enhance control of your vehicle to deliver a smooth, confident ride.

**REAR CAMERA MIRROR** Compared with a traditional inside rearview mirror, this rearview-mirror display can function as a traditional mirror or as a camera screen, eliminating obstructed views caused by rear-seat passengers and head restraints and providing a wider, less-obstructed rear field of view.

**WIRELESS CHARGING** A standard wireless charging<sup>1</sup> pad helps you keep your smartphone charged and your cabin clutter-free.

Safety or driver assistance features are no substitute for the driver's responsibility to operate the vehicle in a safe manner. The driver should remain attentive to traffic, surroundings and road conditions at all times. Visibility, weather and road conditions may affect feature performance. Read the vehicle Owner's Manual for more important feature limitations and information.

<sup>1</sup>The system wirelessly charges one PMA- or Qi-compatible mobile device. Some phones have built-in wireless charging technology and others require a special adapter/back cover. To check for phone or other device compatibility, see [my.buick.com/learn](http://my.buick.com/learn) or consult your carrier.





## WHEN MICROSECONDS CAN MAKE ALL THE DIFFERENCE

With its suite of available advanced safety features, Enclave is designed to help you with the most important thing of all: keeping you and those close to you secure.

**ADAPTIVE CRUISE CONTROL-ADVANCED** This available feature enhances regular cruise control. The cruise control speed is automatically adapted to maintain a selected gap between the vehicle and vehicles detected ahead while you steer, reducing the need for you to frequently brake and accelerate.

**REAR VISION CAMERA** To help you better navigate while backing up, the Rear Vision Camera shows you grid lines and live images of what's behind you on the 8-inch diagonal color touch-screen.

**REAR CROSS TRAFFIC ALERT** When in Reverse, available Rear Cross Traffic Alert provides alerts to help you avoid approaching detected left or right cross traffic, such as when you're backing out of your driveway or a crowded parking space.

**LANE KEEP ASSIST WITH LANE DEPARTURE WARNING** Available Lane Keep Assist with Lane Departure Warning provides gentle steering wheel turns, and if necessary, Lane Departure Warning alerts to help you avoid crashes due to unintentionally drifting out of your lane when you are not actively steering and your turn signal is not activated.

**LANE CHANGE ALERT WITH SIDE BLIND ZONE ALERT** Available Lane Change Alert with Side Blind Zone Alert provides side-mirror alerts to help you avoid detected vehicles moving in, or rapidly approaching, your side blind zone during a lane-change maneuver.

**SAFETY ALERT SEAT** When a collision-avoidance technology such as available Rear Cross Traffic Alert triggers a warning, the left and/or right side of the driver seat cushion of the available Safety Alert Seat gently vibrates to signal the direction of the approaching hazard. For some types of alerts, both sides of the seat vibrate at the same time, for example, if the object is in front of the vehicle.

**FORWARD COLLISION ALERT** If this available system detects that a front-end collision situation is imminent while following a detected vehicle, the system alerts you to a potential crash. It also alerts you if you are following a detected vehicle much too closely.

**LOW SPEED FORWARD AUTOMATIC BRAKING** If the vehicle is traveling at a low speed and the available system detects that a front-end collision situation is imminent while following a detected vehicle and you have not applied the brakes, the system automatically applies the brakes to help reduce the collision's severity. The system may even help avoid the collision at very low speeds.

**FORWARD AUTOMATIC BRAKING** If this available system<sup>1</sup> detects that a front-end collision situation is imminent while following a detected vehicle and you have not applied the brakes, the system automatically applies the brakes to help reduce the collision's severity. The system may even help avoid the collision at very low speeds.

Safety or driver assistance features are no substitute for the driver's responsibility to operate the vehicle in a safe manner. The driver should remain attentive to traffic, surroundings and road conditions at all times. Visibility, weather and road conditions may affect feature performance. Read the vehicle Owner's Manual for more important feature limitations and information.

<sup>1</sup>Replaces Low Speed Forward Automatic Braking on Avenir models equipped with the available Avenir Technology Package.



# TECHNOLOGY THAT KEEPS YOU CONNECTED

Enclave helps keep you and your passengers seamlessly connected and entertained with its suite of available built-in technologies.

**NEW BUICK CONNECTED SERVICES** With a range of available plans, Buick Connected Services seamlessly links your digital life to your vehicle. Starting with Connected Access,<sup>1</sup> you'll get standard connectivity that enables services in your vehicle. Current services include Vehicle Diagnostics and Buick Smart Driver, which analyze your driving data and give you tips on how to improve your driving habits. Add the Remote Access Plan<sup>2</sup> to start and stop or lock and unlock a properly equipped vehicle via the available myBuick mobile app.<sup>2</sup> You can add a monthly data plan to your account at any time that allows you to stay connected on the go with your available in-vehicle 4G LTE Wi-Fi<sup>®</sup> hotspot.<sup>3</sup>

**myBUICK MOBILE APP<sup>2</sup>** Powerful and easy to use, the available myBuick mobile app lets you remotely connect to your vehicle from almost anywhere when you subscribe to Buick Connected Services. When properly equipped, you can unlock and lock your doors, remote-start or -stop your engine and get real-time diagnostics that check your vehicle's fuel status, tire pressure,<sup>4</sup> mileage and more. The myBuick mobile app is also Apple Watch<sup>®</sup>-compatible, so you can locate your Buick,<sup>5</sup> remote-start or -stop the engine, honk the horn and flash the lights and get walking directions to where it's parked—all right from your wrist.

**APPLE CARPLAY<sup>™</sup> COMPATIBILITY<sup>6</sup>** Just plug in your compatible iPhone<sup>®</sup> and you'll have easy access to your contacts, maps and apps that you're familiar with on your vehicle's 8-inch diagonal color touch-screen. You can also have Siri<sup>®</sup> send and read your text messages, and you can listen to all of your content from iTunes<sup>®</sup>, Apple Music<sup>™</sup> and other compatible audio apps.

**ANDROID AUTO<sup>™</sup> COMPATIBILITY<sup>7</sup>** Android Auto makes it easy to use the touch-screen display in your Enclave to access your phone, texts and music. And with Google Maps, you can get voice-guided navigation, live traffic information, lane guidance and more while keeping your hands on the wheel and your eyes on the road.

**BUILT-IN WI-FI<sup>®</sup> HOTSPOT<sup>3</sup>** An available built-in Wi-Fi<sup>®</sup> hotspot supports up to seven devices from up to 50 feet away from the vehicle. So your passengers can use their favorite apps to stream movies, watch TV, play games, listen to music and check social media on the go.

**BUILT-IN NAVIGATION<sup>8</sup>** Experience the convenience of real-time maps, turn-by-turn directions and more with Enclave's available built-in Navigation System.



<sup>1</sup>Standard connectivity available only to original purchaser for 10 years. See onstar.com for details and further plan limitations. Does not include safety services. Connected Access services are subject to change. <sup>2</sup>Requires compatible Apple<sup>®</sup> or Android<sup>™</sup> device and data connection. Remote services require paid plan. <sup>3</sup>Service varies with conditions and location. Requires active OnStar service and data plan. Data plans provided by AT&T<sup>®</sup>. Vehicle must be on or in accessory position for Wi-Fi<sup>®</sup> to function. <sup>4</sup>Does not monitor spare tire. <sup>5</sup>Service varies with conditions. Available in the U.S. only. <sup>6</sup>Vehicle user interface is a product of Apple<sup>®</sup> and its terms and privacy statements apply. Requires compatible

iPhone<sup>®</sup> and data plan rates apply. Apple CarPlay is a trademark of Apple, Inc. Siri, iPhone and iTunes are trademarks of Apple, Inc., registered in the U.S. and other countries. <sup>7</sup>Vehicle user interface is a product of Google<sup>™</sup> and its terms and privacy statements apply. Requires the Android Auto app on Google Play and an Android-compatible smartphone running Android 5.0 Lollipop or higher. Data plan rates apply. Android Auto is a trademark of Google LLC. <sup>8</sup>Map coverage available in the United States, Puerto Rico and Canada.





# ONSTAR SAFETY AND SECURITY

As you travel with the ones you care about most, available OnStar®<sup>1</sup> is with you to empower every moment. With a paid OnStar service plan, you can have a 24/7 lifeline to specially trained Advisors, ready to help if you've been in a crash, your car's been stolen, you're lost or you need Roadside Assistance.<sup>2</sup>

**EMERGENCY HELP WHEN IT MATTERS MOST** Using built-in sensors, available Automatic Crash Response<sup>3</sup> can connect you to an Emergency Medical Dispatch-Certified Advisor<sup>4</sup> immediately after a crash to help get you the care you need, even if you can't ask for it. Using Injury Severity Prediction technology, these specially trained Advisors<sup>4</sup> can notify first responders about the likelihood of serious injury so they can provide help right away. You can feel confident knowing you have a team, 24/7, to get you the assistance you need.

**SECURITY YOU CAN COUNT ON** If your vehicle is stolen, you can be assured OnStar Advisors are ready to take action with available Stolen Vehicle Recovery. Once a vehicle is reported stolen, OnStar Advisors can work with the police to help recover it. They can use GPS technology to pinpoint its location, slow the vehicle if conditions are safe and even prevent it from being restarted. And with available Theft Alarm Notification,<sup>5</sup> if your vehicle alarm sounds, we can let you know via text, email or a phone call. One simple call puts a team into action to help recover your vehicle quickly and safely.

OnStar service plans and Connected Services have changed significantly. While many of the offered services are the same, available plans and pricing are different. Visit [onstar.com](http://onstar.com) to review all the details and limitations.

<sup>1</sup>Visit [onstar.com](http://onstar.com) for coverage map, details and limitations. <sup>2</sup>Roadside service provided by Allstate Roadside Services. <sup>3</sup>OnStar plan, working electrical system, cell service and GPS signal required. OnStar links to emergency services. <sup>4</sup>OnStar Advisors are certified by the International Academies of Emergency Dispatch. <sup>5</sup>Requires armed GM factory-installed theft-deterrent system. Additional texting and data rates apply.



FEATURES				
	PREFERRED	ESSENCE	PREMIUM	AVENIR
FRONT-WHEEL DRIVE	●	●	●	●
ALL-WHEEL DRIVE, SINGLE CLUTCH	—	○	—	—
ALL-WHEEL DRIVE, ACTIVE TWIN CLUTCH	—	—	○	○
3.6L V6 ENGINE WITH 9-SPEED TRANSMISSION AND STOP/START TECHNOLOGY	●	●	●	●
APPLE CARPLAY™ COMPATIBILITY <sup>1</sup> /ANDROID AUTO™ COMPATIBILITY <sup>2</sup>	●	●	●	●
THIRD-ROW 60/40 SPLIT BENCH SEATING	●	●	●	●
LED HEADLAMPS	●	●	●	●
HANDS-FREE POWER LIFTGATE WITH LED LOGO PROJECTION	●	●	●	●
QUIETTUNING™ WITH ACTIVE NOISE CANCELLATION	●	●	●	●
HEATED FRONT SEATS	●	●	●	●
PERFORATED LEATHER-APPOINTED SEATS, FIRST AND SECOND ROWS	—	●	●	●
IN-VEHICLE AIR IONIZER	—	●	●	●
LANE CHANGE ALERT WITH SIDE BLIND ZONE ALERT <sup>3</sup>	—	●	●	●
REAR CROSS TRAFFIC ALERT <sup>3</sup>	—	●	●	●
VENTILATED FRONT SEATS	—	—	●	●
HEATED SECOND-ROW CAPTAIN'S CHAIRS	—	—	●	●
THIRD-ROW POWER-FOLDING SEATS	—	—	●	●
AUTOMATIC HEATED STEERING WHEEL WITH AUTOMATIC HEATED AND VENTILATED FRONT SEATS	—	—	●	●
LANE KEEP ASSIST WITH LANE DEPARTURE WARNING <sup>3</sup>	—	—	●	●
SAFETY ALERT SEAT <sup>3</sup>	—	—	●	●
FRONT PARK ASSIST <sup>3</sup>	—	—	●	●
FORWARD COLLISION ALERT <sup>3</sup>	—	—	●	●
INTELLIBEAM AUTOMATIC HIGH-BEAM HEADLAMPS	—	—	●	●
BOSE® PERFORMANCE-ENHANCED PREMIUM 10-SPEAKER SYSTEM WITH AMP AND SUBWOOFER	—	—	●	●
BUICK INFOTAINMENT SYSTEM <sup>4</sup> WITH NAVIGATION <sup>5</sup>	—	○	○	●
POWER MOONROOF WITH REAR FIXED SKYLIGHT	—	○	○	●
REAR CAMERA MIRROR <sup>3</sup> AND SURROUND VISION <sup>3</sup>	—	○	○	●
<b>AVENIR EXCLUSIVE</b>				
BLACK ICE GRILLE, 20" PEARL NICKEL WHEELS AND UNIQUE AVENIR BADGING DETAIL	—	—	—	●
EBONY OR CHESTNUT PERFORATED LEATHER-APPOINTED SEATING, FIRST AND SECOND ROWS, WITH REAL WOOD-ACCENTED STEERING WHEEL	—	—	—	●
WIRELESS CHARGING PAD <sup>6</sup>	—	—	—	●
8" DIAGONAL RECONFIGURABLE ENHANCED DRIVER INFORMATION CENTER	—	—	—	●

PACKAGES				
	PREFERRED	ESSENCE	PREMIUM	AVENIR
<b>DRIVER CONFIDENCE PACKAGE<sup>3</sup></b> Includes Lane Change Alert with Side Blind Zone Alert, Rear Cross Traffic Alert	—	●	●	●
<b>DRIVER CONFIDENCE PACKAGE II<sup>3</sup></b> Includes Driver Confidence Package, Lane Keep Assist with Lane Departure Warning, Safety Alert Seat, Front and Rear Park Assist, Forward Collision Alert, Low Speed Forward Automatic Braking, Following Distance Indicator, IntelliBeam auto high-beam headlamps and Front Pedestrian Braking. <i>When Avenir Technology Package is ordered, Forward Automatic Braking replaces Low Speed Forward Automatic Braking.</i>	—	—	●	●
<b>MEMORY PACKAGE</b> Includes 2 driver presets for 8-way power seat/Outside mirrors/Tilt/telescoping steering column	—	—	●	●
<b>TRAILERING PACKAGE</b> Includes heavy-duty cooling system/Trailer hitch and wiring harness/Max 5,000 lbs trailering <sup>7</sup>	—	○	○	○
<b>EXPERIENCE BUICK PACKAGE</b> Includes 20" polished cast aluminum wheels/Power moonroof with rear fixed skylight/Trailer Package	—	—	○	—
<b>AVENIR TECHNOLOGY PACKAGE</b> Includes Adaptive Cruise Control–Advanced <sup>3</sup> Forward Automatic Braking <sup>3</sup> and Premium Ride Suspension/Continuously Variable Real-Time Damping chassis	—	—	—	○

DIMENSIONS (INCHES)		CAPACITIES	
Wheelbase	120.9	Engine Type	3.6L V6 SIDI VVT with Stop/Start technology
Overall length	204.3	Transmission	9-speed automatic
Body width/with mirrors	78.8/89.3	Horsepower	310 hp @ 6800 rpm
Overall height with luggage rack	69.9	Torque	266 lb-ft @ 2800 rpm
Track width, front/rear	67.3/67.0	EPA-estimated mpg	18 city/26 hwy (FWD), 17 city/25 hwy (AWD)
Head room, first/second/third row	41.0/39.9/37.6	Fuel Tank (approx.), FWD/AWD	19/22 gallons
Shoulder room, first/second/third row	62.4/61.7/57.3	Cargo Volume <sup>8</sup>	Behind first-row seats with second and third rows folded: 97.6 cu. ft. With second row up and third row folded: 58.0 cu. ft. Behind third-row seats: 23.6 cu. ft.
Hip room, first/second/third row	59.1/57.7/48.5		
Leg room, first/second/third row	41.2/38.9/33.5		

<sup>1</sup>Vehicle user interface is a product of Apple® and its terms and privacy statements apply. Requires compatible iPhone® and data plan rates apply. Apple CarPlay is a trademark of Apple, Inc. Siri, iPhone and iTunes are trademarks of Apple, Inc., registered in the U.S. and other countries. <sup>2</sup>Vehicle user interface is a product of Google™ and its terms and privacy statements apply. Requires the Android Auto app on Google Play and an Android™-compatible smartphone running Android 5.0 Lollipop or higher. Data plan rates apply. Android Auto is a trademark of Google LLC. <sup>3</sup>Read the vehicle Owner's Manual for important feature limitations and information. <sup>4</sup>Functionality varies by model. Full functionality requires compatible Bluetooth® and smartphone, and USB connectivity for some devices. <sup>5</sup>Map coverage available in the United States, Puerto Rico and Canada. <sup>6</sup>The system wirelessly charges one PMA- or Qi-compatible mobile device. Some phones have built-in wireless charging technology and others require a special adapter/back cover. To check for phone or other device compatibility, see my.buick.com/learn or consult your carrier. <sup>7</sup>Before you buy a vehicle or use it for trailering, carefully review the trailering section of the Owner's Manual. The weight of passengers, cargo and options or accessories may reduce the amount you can tow. <sup>8</sup>Cargo and load capacity limited by weight and distribution.





## EXTERIOR COLORS



Red Quartz Tintcoat<sup>1,2</sup>



Dark Slate Metallic<sup>1,3</sup>



Summit White<sup>2</sup>



Ebony Twilight Metallic<sup>1,3</sup>



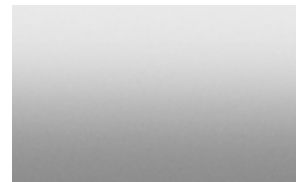
White Frost Tricoat<sup>1</sup>



Satin Steel Metallic<sup>1,3</sup>



Havana Metallic<sup>1,2</sup>



Quicksilver Metallic<sup>1,2</sup>



Black Cherry Metallic<sup>1,2,4</sup>



Pepperdust Metallic<sup>1,3</sup>

Exterior colors are subject to change. Visit [buick.com](http://buick.com) for current availability.

<sup>1</sup>Additional charge, premium paint.

<sup>2</sup>Not available on Avenir.

<sup>3</sup>No additional cost on Avenir.

<sup>4</sup>Not available on Preferred.

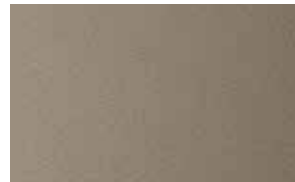
## INTERIOR COLORS



Dark Galvanized Cloth<sup>5</sup> or Perforated Leather-Appointed Seating<sup>6,7</sup>



Brandy Perforated Leather-Appointed Seating<sup>7,8</sup>



Shale Perforated Leather-Appointed Seating<sup>7</sup>



Chestnut Perforated Leather-Appointed Seating<sup>9</sup>

Ebony accents included with all interior colors. Leather-appointed seating first and second rows only.

<sup>5</sup>Standard on Preferred.

<sup>6</sup>Not available with Black Cherry Metallic.

<sup>7</sup>Available on Essence and Premium, not available on Preferred or Avenir.

<sup>8</sup>Not available with Pepperdust Metallic.

<sup>9</sup>Only available on Avenir.

Ebony Perforated Leather-Appointed Seating<sup>9</sup>

## WHEELS



18" Bright Silver Cast Aluminum  
Standard on Preferred, Essence and Premium.



20" Polished Cast Aluminum  
Available on Essence and Premium, included in the Experience Buick Package.



20" Cast Aluminum With Premium Pearl Nickel Finish  
Exclusive to Avenir.



20" Bright Machine-Faced Aluminum With Satin Graphite Painted Finish  
Dealer-installed accessory wheel. Available on Preferred, Essence and Premium<sup>10</sup>

<sup>10</sup>Use only GM-approved tire and wheel combinations. See [buick.com/accessories](http://buick.com/accessories) for more important tire and wheel information, or see your dealer.



# IMPORTANT WORDS

We have tried to make this catalog comprehensive and factual. We reserve the right, however, to make changes at any time, without notice, in prices, colors, materials, equipment, specifications, models and availability. Specifications, dimensions, measurements, ratings and other numbers in this catalog and other printed materials provided at the dealership or affixed to vehicles are approximations based on design and engineering drawings, prototypes and laboratory tests. Your vehicle may differ due to variations in manufacture and equipment. Since some information may have been updated since the time of printing, please check with your Buick dealer for complete details. Buick reserves the right to lengthen or shorten the model year for any product for any reason, or to start and end model years at different times. Certain vehicle features may lose their usefulness over time due to obsolescence from technological changes. Unless otherwise noted, all claims based on GM Mid-Size SUV segment and latest available competitive information. Excludes other GM vehicles.

**NEW-VEHICLE LIMITED WARRANTY** This warranty is for GM vehicles registered in the USA. See your Buick dealer for terms and conditions.

4 years/50,000 miles (whichever comes first): Bumper-to-Bumper Limited Warranty. The entire vehicle is warranted for repairs, including parts and labor, to correct defects in materials or workmanship. The warranty covers towing to the nearest Buick dealership, and there is no deductible for warranty repairs during the warranty period. The warranty transfers automatically with vehicle ownership during the warranty period.

6 years/70,000 miles (whichever comes first): Transferable Powertrain Limited Warranty plus Roadside Assistance and Courtesy Transportation.

6 years/100,000 miles (whichever comes first): Body and sheet metal components are warranted against rust-through corrosion.

**AN IMPORTANT NOTE ABOUT ALTERATIONS AND WARRANTIES** Installations or alterations to the original equipment vehicle (or chassis) as distributed by General Motors are not covered by the General Motors New-Vehicle Limited Warranty. The special body company, assembler, equipment installer or upfitter is solely responsible for warranties on the body or equipment and any alterations (or any effect of the alterations) to any of the parts, components, systems or assemblies installed by GM. General Motors is not responsible for the safety or quality of design features, materials or workmanship of any alterations by such suppliers.

**ASSEMBLY** Buick vehicles and their components are assembled or produced by different operating units of General Motors, its subsidiaries or suppliers to GM worldwide. We sometimes find it necessary to produce Buick vehicles with different or differently sourced components than originally scheduled. Since some options

may be unavailable when your vehicle is assembled, we suggest that you verify that your vehicle includes the equipment you ordered or, if there are changes, that they are acceptable to you.

**ENGINES** Buick products are equipped with engines produced by GM Powertrain or other suppliers to GM worldwide. The engines in Buick products may also be used in other GM makes and models.

**TRAILERING AND OFF-ROAD DRIVING INFORMATION** Please go to [buick.com](http://buick.com) and carefully review the vehicle Owner's Manual for important safety information about trailering or off-road driving in your vehicle.

**ONSTAR AND BUICK CONNECTED SERVICES** Connected vehicle services require a paid connected vehicle services plan or trial, connected hardware, vehicle electrical system (including battery), wireless service and GPS satellite signal to be available and operating for features to function properly. OnStar acts as a link to existing emergency service providers. Visit [onstar.com](http://onstar.com) for coverage map, details and system limitations.

**A NOTE ON CHILD SAFETY** Always use seat belts and the correct child restraint for your child's age and size, even with airbags. Even in vehicles equipped with the Passenger Sensing System, children are safer when properly secured in a rear seat in the appropriate infant, child or booster seat. Never place a rear-facing infant restraint in the front seat of any vehicle equipped with an active frontal airbag. See your vehicle Owner's Manual and child safety seat instructions for more safety information.

**FLEET ORDERS** Some standard content may be deleted with fleet orders. See dealer for details.

**GMMOBILITY.COM (1-800-323-9935)** GM Mobility offers financial assistance for eligible adaptive equipment to make automotive travel easier for persons with disabilities or special transportation needs. To learn more about special GM Mobility offers, visit [gmmobility.com](http://gmmobility.com).

GM, the GM logo, Buick, the Buick emblem, OnStar, the OnStar emblem and the slogans, emblems, vehicle model names, vehicle body designs and other marks appearing in this catalog are the trademarks and/or service marks of General Motors, its subsidiaries, affiliates or licensors. Sirius, XM and all related marks and logos are trademarks of SiriusXM Radio, Inc. The Facebook logo is a trademark of Facebook, Inc. The Twitter logo is a trademark of Twitter, Inc. Android, Android Auto, Google Play, YouTube and other marks are trademarks of Google LLC. Apple CarPlay, Siri, iPhone and iTunes are trademarks of Apple, Inc. The Instagram logo is a trademark of Instagram, Inc. ©2018 General Motors. All rights reserved.

To learn more about why Certified Service is the perfect companion for your Enclave, visit [mycertifiedservice.com](http://mycertifiedservice.com).

