

Audi 2017



Audi

A4



A4
2017

Audi of America
Audiusa.com
Facebook.com/Audi

Note: A word about this brochure. Audi of America, Inc., believes the specifications in this brochure to be correct at the time of printing. However, specifications, standard equipment, options, fabrics, and colors are subject to change without notice. Some equipment may be unavailable when your vehicle is built. Please ask your dealer for advice concerning current availability of standard and optional equipment, and your dealer will verify that your vehicle will include the equipment you ordered. Vehicles in this brochure are shown with optional equipment. See your dealer for complete details on the Audi New Vehicle Limited Warranty, twelve-year limited warranty against corrosion perforation, and Audi 24/7 Roadside Assistance. (Roadside assistance coverage provided by Road America in the U.S. Certain conditions apply; see your dealer for details.) Tires supplied by various manufacturers. "Audi," all model names, "Audi connect," "Audi pre sense," "Audi Sport," "MMI," "quattro," "S line," "S tronic," "Sideguard," "Singleframe," "TFSI," "ultra" and the four rings logo are registered trademarks of AUDI AG. "Apple," "App Store," "iPhone" and "Siri" are registered trademarks of Apple Inc. "Apple Music" is a trademark of Apple Inc. "Bang & Olufsen" is a registered trademark of Bang & Olufsen. The BLUETOOTH word mark and logos are owned by the Bluetooth SIG, Inc., and any use of such marks by AUDI AG is under license. "Facebook" is a registered trademark of Facebook, Inc. "Android Auto," "Google," "Google Play" and "Google Maps" are trademarks of Google Inc. © 2016 Google Inc. All rights reserved. "HomeLink" is a registered trademark of Gentex Corporation. "INRIX XD" is a registered trademark of INRIX, Inc. "SiriusXM" and all related marks and logos are trademarks of Sirius XM Radio Inc. and its subsidiaries. "Wi-Fi" is a registered trademark of the Wi-Fi Alliance. All other trademarks are the property of their respective owners. Some European models shown. Some features may not be available at time of order.

Engineering a brilliant encore: The all-new Audi A4.

A4

2.0T

Light, yet powerful. Intelligent, yet unpretentious. The beautifully crafted all-new Audi A4 exemplifies our progressive thinking by joining passionate design, thrilling performance and advanced technologies in a precisely engineered vehicle that is a worthy encore to the impressive legacy of the A4.





2017 Audi A4 2.0T quattro® Prestige shown in Manhattan Gray metallic with available equipment.



A minimalist expression.

There is great power in simplicity—and the all-new Audi A4 proves it from every angle. You'll first notice its striking shape and unique diamond-inspired Singleframe® grille. Then, you'll be lured in by the brilliance of our iconic LED technology and compelling design touches. Add to that the capability of available quattro® all-wheel drive, and we've created something both effortless and intensely engineered.

Maximum impressions.



Give peace of mind a chance.

We understand that you can't control everything you experience on the road. That's why we've engineered innovative solutions to help provide a safer road experience. This includes added strength and safety features in the vehicle, such as a rigid occupant safety cell and advanced airbag technologies,¹ next-generation crumple zones and an innovative lightweight body construction—setting your mind a little more at ease.



2017 Audi A4 2.0T quattro® Prestige shown in Manhattan Gray metallic with available equipment.

1. Airbags are supplemental restraints only and will not deploy in all crash circumstances. Always use safety belts and refer to your owner's manual for the proper use of the restraint systems when transporting children.

More than a feeling.

Your drive sets up the rhythm of your day. Knowing this, we placed what you need where you need it to put you into your tempo from the start. The ergonomic interior space was painstakingly designed to help make your Audi A4 much easier to operate. An intelligent infotainment platform is prominently placed on either the bold MMI® display or intuitive available Audi virtual cockpit. And a yacht-style gear selector gives your wrist a comfortable place to rest while the available MMI touch can recognize commands in your handwriting.



2017 Audi A4 2.0T quattro® Prestige shown with Nougat Brown leather and available equipment.



The rich embrace of refinement.

Stay cool in the summer, warm in the winter and cozy no matter what. Keep the cabin calm with a ventilation system that provides reduced noise, less draft and increased comfort. The roomy interior provides incredible comfort with standard leather seating surfaces, available front and rear heated seats and ventilated front sport seats. For a heightened interior environment, consider the available ambient LED interior lighting plus package and illuminate contour and background elements in up to 30 color settings, or pair your color profile with Audi drive select modes based on an Interactive setting.



The kind of engine built for a propulsive soundtrack.



// Engine

2.0-liter TFSI® turbocharged four-cylinder engine.

252 hp / 273 lb-ft.

// Drivetrain

S tronic® dual-clutch automatic transmission with front-wheel drive or available quattro® all-wheel drive.

// Performance

Top track speed of 130 mph.¹

0–60 mph in 6.1 sec with front-wheel drive.

0–60 mph in 5.7 sec with available quattro® all-wheel drive.

Confidence exudes power—and with the all-new Audi A4, all you have to do is push a button to unleash both. Whether you choose front-wheel or available quattro® all-wheel drive, you'll experience the intensity of its capable handling. And with the added delivery of power through a seven-speed S tronic® dual-clutch automatic transmission, you'll find it much easier to release your vehicle's potency.²



2017 Audi A4 2.0T quattro® Prestige shown in Manhattan Gray metallic with available equipment.

1 Top track speed is electronically limited in the U.S. Always obey all speed and traffic laws. 2 Always obey all speed and traffic laws.

Precision means hitting the right chord in your drive.

A progression of the right notes changes the course of the tune. This is proven true in the all-new Audi A4, as the precise handling is made more thrilling by available sport suspension or Adaptive damping suspension and the four exciting modes of standard Audi drive select. Paired with available quattro® all-wheel drive featuring electronic torque vectoring for enhanced agility, it will help direct torque where it's needed in almost any condition.



// Adaptive damping suspension

Lower body (-10 mm), lower center of gravity. Blending handling with comfort, the available Adaptive damping suspension helps improve the directional stability of the vehicle, adjusting the dampers at all four wheels within milliseconds.

On our radar, off your nerves.

- Cameras
- Radar sensors
- Ultrasonic sensors

The all-new Audi A4 packs more available intelligent assistance features than it ever has before.

Our comprehensive portfolio of available driver assistance technologies surround and help you to respond to unexpected situations on the road¹. In congested traffic, traffic jam assist combines acceleration, braking and steering guidance to help support your mobility. If your vehicle is equipped with available Audi pre sense[®] front, the Collision avoidance assist system helps to compute a more suitable path and provides steering input, helping you stay on the intended path. In the event that your vehicle begins to leave a lane without signaling, Audi active lane assist can give you a steering-wheel vibration warning and gently corrects your steering, helping you avoid a potential incident.

// Traffic jam assist

Included as a function within available Audi adaptive cruise control with stop & go, traffic jam assist combines acceleration and braking along with steering guidance when traveling at speeds between 0-40 mph in congested traffic¹.

Standard driver assistance aids

Audi pre sense[®] basic

Audi pre sense[®] city¹

Rear view camera¹

Parking system plus with front and rear acoustic sensors¹ (Premium Plus models)

Parking system plus with top view camera system¹ (Prestige models)



Technology package

Standard on Prestige models

Available on Premium Plus models

Audi side assist and Audi pre sense[®] rear¹

- with Rear cross traffic alert¹

- with Vehicle exit assist¹

Driver Assistance package

Available on Prestige models

Audi adaptive cruise control with stop & go and traffic jam assist

Audi pre sense[®] front¹

- with Turn assist¹

- with Collision avoidance assist¹

Traffic sign recognition¹

Audi active lane assist¹

High-beam assistant

For a complete list of Technology and Driver Assistance package features, please see Trim Section of this brochure for more details.

Download the Audi library app on the App Store[®] or Google Play[™] store, or visit Audiusa.com/brochures to dive deeper into the all-new Audi A4 as well as other models and Audi information².

As discussed are not substitutes for attentive driving. Always check surrounding traffic and use turn signals. Please see your owner's manual for important limitations. ² Standard text and data usage rates apply.

Dramatization



Smart, bold and beautiful. The available Audi virtual cockpit gives you the full picture of exactly what you need to see, in your field of vision, with vibrant color on a 12.3-inch display. The innovative, fully digital instrument cluster offers two unique modes for viewing data: Classic mode and Infotainment mode. Classic mode offers the traditional speedometer and tachometer, whereas Infotainment mode minimizes the traditional gauges while providing space for a larger panoramic navigation and other visuals. For a more hands-on approach, consider our available MMI® touch rotary controller with integrated touchpad and intuitive two-button function keys.



Making innovation pop.



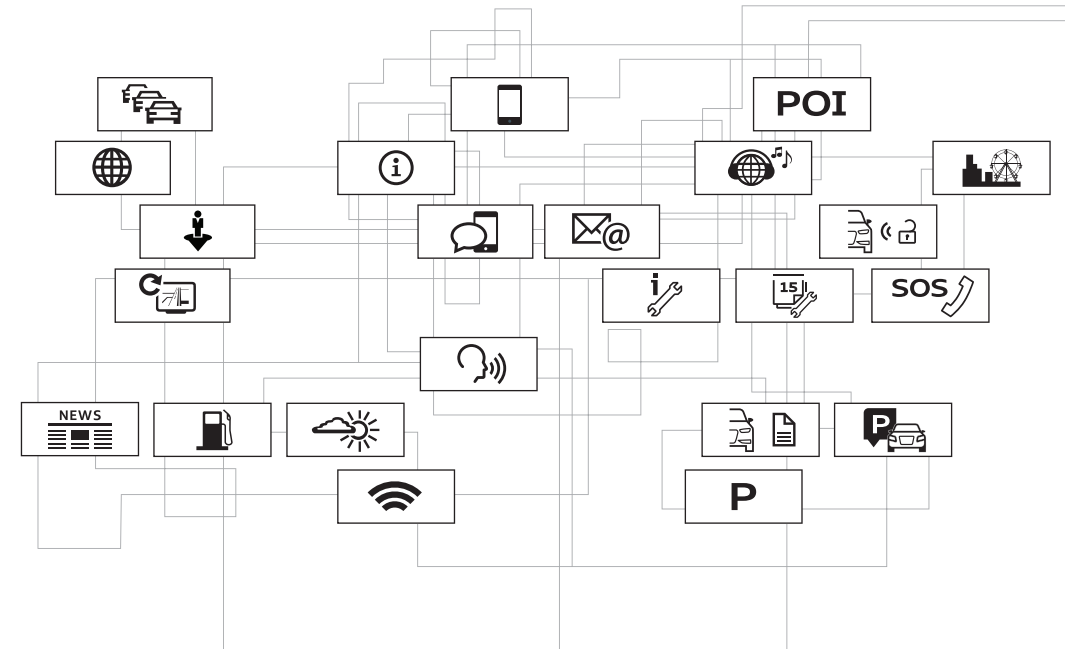
Take comfort in the familiarity of your mobile device when you connect it via standard Audi smartphone interface. When linked with a compatible mobile device, Apple CarPlay™ will allow you access to Siri® and iPhone® and your favorite apps such as Apple Music™, Maps, Messages and more. If you have a compatible Android device, Google™ Android Auto™ will connect you with Google Play™ Music, Google Maps™, Google Search and more.¹



Audi smartphone interface supported by Apple CarPlay™ shown with available 8.3-inch MMI® center infotainment/navigation display.

The soul of a new machine.

Stay connected even when you're on-the-go with the power of the available next-generation Audi connect® system.² Looking for interesting events in your area? Want to avoid heavy traffic? Want to keep passengers entertained with an in-vehicle Wi-Fi® hotspot?³ Audi connect has you covered with a robust portfolio of services with the means to inform, entertain and get you to where you want to go.



A front-row feeling.

Get the sensory experience of standing 30 feet from your favorite artists while sitting in the comfort of your front seat, thanks to the meticulously crafted, available Bang & Olufsen® 3D Sound System. You will experience both thrilling highs and sumptuous lows in their most lifelike form, provided by 19 speakers and powered by a 16-channel amplifier with an output of 755 watts. The high-quality design and location of the speakers both enhances the spaciousness of the sound and adds to the sleek interior look of the vehicle, giving sound an entirely new dimension.

1, 2, 3 See A4 2.0T Prestige page for important information regarding Apple CarPlay™, Android Auto™, Audi connect® and Wi-Fi® hotspot.



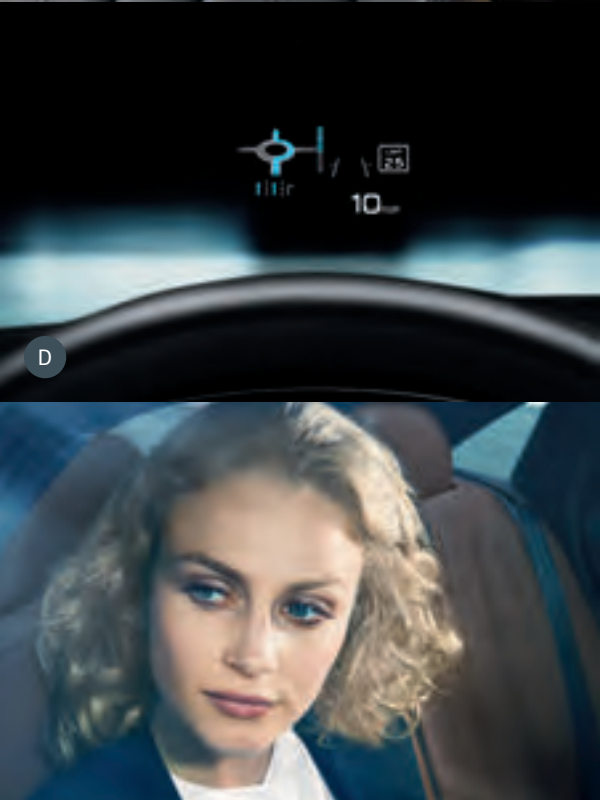
A



B



C



D



E



F

A. Available ambient LED interior lighting plus package | Functional, reactive and beautiful lighting illuminates the cabin.

B. Available Audi virtual cockpit | Intuitive, immersive, available intelligence is right in your sight line.

C. Available 19" Audi Sport® 10-V-spoke design wheels | For an added dynamic touch.

D. Available head-up display

E. Available Natural Gray Oak Wood inlays

F. Sunroof | Connecting with your surroundings has never been easier.

G. Three-zone automatic climate control | Keep nearly all of your passengers cozy with climate control function keys that include haptic feedback.

H. Exterior LED lighting technology | Available full LED headlights and standard LED taillights with dynamic turn signals form a distinctive look and provide long-lasting illumination.

I. Gear shift design | The yacht-style gear selector provides a point to rest your wrist easily while engaging the MMI® system.



G



H



I

You're a try-anything-once, never-sit-still, give-it-your-all kind of person. Life doesn't just string you along; you strive to take life further. Audi Genuine Accessories can help you do just that. For personalizing, protecting and showing your Audi pride, our accessories were made just for you.

Now for the finishing touches.



A. Small cargo carrier¹
Use 12.7 cu ft of extra storage to get started on your weekend getaway.
Size: 70" long, 33" wide, 15" high.



B

B. Aluminum bike rack¹
Help protect your other ride. This locking holder fits 20- to 80-mm bike frames with both wheels on the bike and helps keep the bike upright as you secure it in place.



C

C. Ski and snowboard racks¹
These racks help transport your equipment to the slopes. The standard attachment (shown) holds two sets of skis or two snowboards. A deluxe attachment, sold separately, holds up to three sets of skis or four snowboards.



¹ All roof-rack system attachments require the base carrier bars. All attachments sold separately. Recreational equipment, sporting equipment and luggage not included.

European model shown.

Audi Genuine Accessories

Audi Genuine Sport and Design Accessories

For a bolder appearance or a finishing touch, we have a solution that helps make every mile more enjoyable—and more yours.

- ▶ Stylish wheel designs
- ▶ Exhaust tips
- ▶ License plate frames

Audi TravelSpace Transport Accessories

Wherever you go, help make sure everything fits with a variety of intelligent and innovative solutions.

- ▶ Bike and ski racks
- ▶ Rooftop cargo carriers
- ▶ In-vehicle cargo bags

Audi Guard Comfort and Protection Accessories

Help protect what you love. Use Audi Guard Comfort and Protection Accessories to help keep your Audi looking like new—inside and out.

- ▶ Floor mats
- ▶ Splash guards
- ▶ Cargo mats

Audi Guard Car Care Products

Your Audi A4 deserves the very best, and this is it: the only car care line designed specifically for Audi.

- ▶ Leather care
- ▶ Insect remover
- ▶ Detailing tools
- ▶ Winter protection

A. Carbon fiber mirror caps

Built from the same materials as the famed Audi Le Mans prototype race cars, these strong, lightweight, eye-catching accents display carbon fiber technology in all its glory.



A

B. A4 winter wheel and tire package

Adding style and performance, this winter wheel and tire package features Audi Original winter tires specifically engineered to help improve traction and handling in snow and ice—and even on dry roads—in temperatures below 45°F.¹ See your authorized Audi dealer for details.



B

C. All-weather floor mats

No matter where the day takes you, the all-weather floor mats feature a deep-ribbed, channeled design that helps protect your vehicle's floor and carpeting from the elements. Black mats are available in sets of two for front or rear. Front mats feature your vehicle's logo.



C

D. All-weather cargo mat

Custom fit for your A4, the raised outside edge of the cargo mat helps contain spills and protect cargo-area carpeting from stains. The textured material helps control load shifting.



D

E. Carbon fiber trunk lid spoiler²

Add a sporty accent to your A4. This spoiler is lightweight, but also strong and durable with the sleek, sophisticated look that carbon fiber offers. Matches the mirror caps shown above.



E

Audi collection



F. Men's Ingolstadt jacket

This three-layer performance soft-shell jacket, with a bonded fleece lining and an interior membrane, features custom map artwork in front and the Audi rings logo on the sleeve.



F

G. Gunmetal key holder

Represent your Audi in style. This dark-gray metal key holder features the Audi rings logo with a pull-and-twist mechanism.



G

H. Men's leather chronograph watch

Add a little extra style to your everyday attire. This watch has a black leather band, a gray dial and a chronograph function with the Audi rings logo.



H



Visit parts.audiusa.com for more.

1 When driving during cold, snowy or icy weather conditions, ensure that your vehicle is equipped with appropriate all-season or winter weather tires. Even with appropriate tires, you must always drive in a manner appropriate for the weather, visibility and road conditions. 2 Professional installation required. See your authorized Audi dealer for details.

Visit audicollectionusa.com for more.



Experience more in Audi library.

Dive deeper into the technical specifications, trim levels and technologies of the all-new Audi A4 through the Audi library app or web viewer.¹ Download the Audi library app on the App Store® or Google Play™ Store, or visit AudiUSA.com/brochures to explore a repository containing Audi informational materials—including a look at the all-new 2017 Audi A4.



A4

2.0T Premium



A4 Premium Featured highlights

Infotainment/Technology

- > 5.0" monochrome driver information system
- > Voice control system
- > Audi smartphone interface including Apple CarPlay™ and Google™ Android Auto™¹
- > 7.0" MMI® center infotainment display
- > Audi sound system with ten speakers and single CD player with MP3 playback capability
- > HD Radio™ Technology
- > SDXC card slots with 64GB operating capacity (dual slots)
- > Audi music interface with two USB ports for data and charging
- > BLUETOOTH® streaming audio for compatible devices
- > BLUETOOTH® wireless technology preparation for compatible mobile phones
- > Garage door opener (HomeLink®)

Exterior

- > 17" 5-parallel-spoke design wheels with 225/50 95H all-season tires
- > Singleframe® grille
- > Xenon headlights with LED daytime running lights
- > Automatic headlights
- > LED taillights with dynamic turn signals
- > LED rear fog lights
- > Power-adjustable, heated exterior side mirrors
- > LED turn signals integrated into the exterior side mirror housings
- > Black trim around exterior side windows
- > Heated windshield washer nozzles
- > Dual exhaust outlets with chrome tips

Driver Assistance/Innovation

- > Keyless engine start/stop
- > Rain/light sensor for automatic windshield wipers and headlights
- > Cruise control with coast, resume and accelerate features
- > Audi pre sense® basic²
- > Audi pre sense® city²
- > Audi drive select
- > Rear view camera

Interior/Seating

- > Three-zone automatic climate control
- > Three-spoke multifunction steering wheel with shift paddles
- > Tilt and telescopic manually adjustable steering column
- > Auto-dimming interior rear view mirror with digital compass
- > Aluminum Ellipse inlays
- > Leather-wrapped gear selector
- > Comfort front armrest
- > Four beverage holders
- > Leather seating surfaces
- > Eight-way power front seats and four-way power lumbar adjustment for driver
- > Split-folding 40/20/40 rear seatbacks
- > Driver and front-passenger comfort head restraints
- > Driver and front-passenger extendable sun visors with illuminated vanity mirrors
- > Power windows with one-touch up/down operation and power retention until front door is opened
- > Cloth headliner
- > Ambient LED interior lighting package
- > Sunroof
- > Front and rear floor mats

- > Black plastic door sill inlays
- > Trunk storage package (side nets, four cargo tie-downs and grocery hook)
- > **Safety/Security**
- > Driver adaptive and front-passenger dual-stage airbags³
- > Driver and front-passenger thorax side airbags³
- > Driver and front-passenger knee airbags³
- > Sideguard® head-curtain airbags³
- > Safety belt reminder for driver and front passenger
- > Lower Anchors and Tethers for Children (LATCH) in rear seats
- > Power central locking system with safety unlock feature if airbags deploy
- > Integrated child door locks in rear doors
- > Electronic Stability Control (ESC) with secondary collision brake assist and traction control (ASR)
- > Anti-lock Brake System (ABS) with Electronic Brake-pressure Distribution (EBD) and brake assist
- > Tire-pressure monitoring system
- > Electromechanical parking brake
- > Vehicle immobilizer

A4 Premium Stand-alone options

- > Parking sensors, front and rear
- > Heated front seats
- > 245/40 R18 93Y summer performance tires (with 18" Wheel package)⁴
- > High-gloss Dark Brown Walnut Wood inlays
- > Natural Gray Oak Wood inlays
- > Rear thorax side airbags³

A4 Premium Available packages

MMI® Navigation plus package

- > 7.0" color driver information system
- > MMI® navigation plus with voice control system⁵
- > MMI® touch with handwriting-recognition technology
- > 8.3" MMI® center infotainment/navigation display
- > Audi connect® CARE assistance and security services⁶
- > Six-month trial subscription to Audi connect® PRIME and PLUS online services^{7,8}
- > INRIX XD® Traffic⁹

Convenience package

- > Anti-theft alarm system with immobilizer
- > Audi advanced key—keyless start, stop and entry with hands-free trunk lid release¹⁰
- > Power-adjustable, auto-dimming, heated exterior side mirrors with memory
- > Driver seat memory
- > SiriusXM® Satellite Radio with 90-day trial subscription¹¹

Sport package

- > Sport suspension
- > Black cloth headliner
- > Front sport seats with four-way power lumbar adjustment

18" Wheel package

- > 18" 10-spoke-star design wheels
- > 245/40 R18 93H all-season tires⁴

A4

2.0T Premium Plus



A4 Premium Plus Featured highlights



In addition to or replaces highlighted features of A4 Premium

Infotainment/Technology

- > Audi connect® CARE assistance and security services⁶
- > Bang & Olufsen® 3D Sound System with 19 speakers, 16-channel amplifier and 755 watts
- > SiriusXM® Satellite Radio with 90-day trial subscription¹¹

Exterior

- > 18" 5-spoke dynamic design contrasting Gray/partially polished wheels with 245/40 R18 93H all-season tires⁴
- > Full LED headlights
- > Power-adjustable, auto-dimming, power-folding, heated exterior side mirrors with memory
- > S line® exterior appearance—front and rear bumpers, body-colored door sill blades, S line® fender badges, Twilight Gray matte rear diffuser
- > Aluminum trim around exterior side windows

Driver Assistance/Innovation

- > Audi advanced key—keyless start, stop and entry with hands-free trunk lid release¹⁰
- > Parking system plus with rear view camera (front and rear acoustic sensors)²

Interior/Seating

- > Driver seat memory
- > Heated front seats
- > S line® stainless steel door sill inlays

Safety/Security

- > Anti-theft alarm system with immobilizer

A4 Premium Plus Stand-alone options

- > 245/40 R18 93Y summer performance tires⁴
- > High-gloss Dark Brown Walnut Wood inlays
- > Natural Gray Oak Wood inlays
- > Rear thorax side airbags³

A4 Premium Plus Available packages

Technology package

- > Audi side assist and Audi pre sense® rear²
 - with Rear cross traffic alert²
 - with Vehicle exit assist²
- > Audi virtual cockpit (12.3" LCD fully digital instrument cluster and two visual modes: Classic and Infotainment)
- > MMI® navigation plus with voice control system⁵
- > MMI® touch with handwriting-recognition technology
- > Six-month trial subscription to Audi connect® PRIME and PLUS online services^{7,8}
- > INRIX XD® Traffic⁹
- > 8.3" MMI® center infotainment/navigation display

Sport package

- > Sport suspension
- > Black cloth headliner
- > Front sport seats with four-way power lumbar adjustment

Cold Weather package

- > Heated rear seats
- > Heated three-spoke multifunction steering wheel with shift paddles

19" Wheel package

- > 19" Audi Sport® 10-V-spoke design wheels
- > 245/35 R19 93Y XL summer performance tires⁴

A4

2.0T Prestige



A4 Prestige Featured highlights



In addition to or replaces highlighted features of A4 Premium Plus

Infotainment/Technology

- > Audi virtual cockpit (12.3" LCD fully digital instrument cluster and two visual modes: Classic and Infotainment)
- > MMI® navigation plus with voice control system⁵
- > MMI® touch with handwriting-recognition technology
- > Six-month trial subscription to Audi connect® PRIME and PLUS online services^{7,8}
- > INRIX XD® Traffic⁹
- > 8.3" MMI® center infotainment/navigation display

Driver Assistance/Innovation

- > Audi side assist and Audi pre sense® rear²
 - with Rear cross traffic alert²
 - with Vehicle exit assist²
- > Head-up display with navigation and assistance systems information
- > Parking system plus with top view camera system²

Interior/Seating

- > Ambient LED interior lighting plus package

A4 Prestige Stand-alone options

- > Adaptive damping suspension
- > 245/40 R18 93Y summer performance tires⁴
- > High-gloss Dark Brown Walnut Wood inlays
- > Natural Gray Oak Wood inlays
- > Rear thorax side airbags³

A4 Prestige Available packages

Driver Assistance package

- > Audi adaptive cruise control with stop & go and traffic jam assist²
- > Audi pre sense® front²
 - with Turn assist²
 - with Collision avoidance assist²
- > Traffic sign recognition²
- > Audi active lane assist²
- > High-beam assistant

Warm Weather package

- > Ventilated front sport seats with four-way power lumbar adjustment
- > Manual rear-side window sunshades

Cold Weather package

- > Heated rear seats
- > Heated three-spoke multifunction steering wheel with shift paddles

Sport package

- > Sport suspension
- > Black cloth headliner
- > Front sport seats with four-way power lumbar adjustment

19" Wheel package

- > 19" Audi Sport® 10-V-spoke design wheels
- > 245/35 R19 93Y XL summer performance tires⁴

1. Always pay careful attention to the road, and do not drive while distracted. Not all features available on all operating systems. Standard text and data usage rates apply. These features require compatible device, operating system, and mobile apps. See mobile device and app providers for terms and privacy. "Android Auto" is a trademark of Google Inc. "Apple CarPlay" is a trademark of Apple Inc. 2. The features discussed are not substitutes for attentive driving. Always check surrounding traffic, and use turn signals. Please see your owner's manual for further details and important limitations. 3. Airbags are supplemental restraints only and will not deploy in all crash circumstances. Always use safety belts and seat children only in the rear, using restraint systems appropriate for their size and age. 4. Tires are supplied and warranted by their manufacturer. High-performance tires are designed for better performance and handling in warm climates. When driving in cold, snowy or icy weather, you should equip your vehicle with four all-season or winter tires, which offer better traction under those conditions. We suggest you use the Audi-recommended winter or all-season tires specified for your Audi. High-performance tires also have a lower aspect ratio that aids performance and handling. Driving over rough or damaged road surfaces, as well as debris, curbs and other obstacles, can cause serious damage to wheels, tires, vehicle body and suspension parts. Be careful to avoid road hazards and reduce your speed, especially if your vehicle is equipped with low-profile tires. Please also remember when making your selection that, while these tires deliver responsive handling, they may ride less comfortably and make more noise than others. Finally, these tires may wear more quickly than other choices. It is important that the inflation pressure is regularly checked and maintained at recommended levels. 5. MMI® navigation plus depends on signals from the worldwide Global Positioning Satellite network. The vehicle's electrical system and existing wireless and satellite technologies must be available and operating properly for the system to function. The system is designed to provide you with suggested routes in locating addresses, destinations and other points of interest. Changes in street names, construction zones, traffic flow, points of interest and other road system changes are beyond the control of Audi of America, Inc. Complete detailed mapping of lanes, roads, streets, toll roads, highways, etc., is not possible, therefore you may encounter discrepancies between the mapping and your actual location. Please rely on your individual judgment in determining whether or not to follow a suggested MMI® navigation plus route. Mapping updates are available at no charge for the first five map updates and are subsequently available on a subscription basis. 6. Always pay careful attention to the road, and do not drive while distracted. Connect CARE services are provided with the support of authorized affiliated and third party service providers. Available on select models. Connect CARE services are activated prior to purchase or lease and do not require registration or paid subscription. Connect CARE services require vehicle cellular connectivity and availability of vehicle GPS signal; certain services collect location information, see Terms of Service for information about how to disable. Connect CARE services are subject to technologies remaining commercially available, and such availability is not guaranteed. See Terms of Service, Privacy Policy, and other details at www.audiusa.com/audiconnect-privacy and www.audiusa.com/audiconnect-terms. Connect PRIME services should only be used when it is safe and appropriate. 7. Always pay careful attention to the road, and do not drive while distracted. Connect PRIME services are optional, may require an additional subscription with separate terms and conditions, and should be used only when it is safe and appropriate. Trial or paid subscription required. Connect PRIME services require vehicle cellular connectivity and availability of vehicle GPS signal; certain services collect location information, see Terms of Service for information about how to disable. See Terms of Service, Privacy Policy, and other details at www.audiusa.com/audiconnect-privacy and www.audiusa.com/audiconnect-terms. Connect PLUS services should only be used when it is safe and appropriate. 8. Pre-paid session-based plans, available for domestic use only. Plans expire when full data allotment is used or time period ends, whichever comes first. Monthly plans auto-renew every 30 days and charges are billed to the credit card on file on the last day of the 30-day term, for the next 30-day time period, unless canceled. To cancel monthly plans at any time, visit myaudiconnect.com or call 1-877-505-2834. Other plans do not auto-renew. Wi-Fi®: Connectivity for up to 8 Wi-Fi® capable devices. General Wireless Service Terms: Subject to the Session Based Wireless Data Services Agreement. Other restrictions and terms apply and may result in service termination and/or limitations. Coverage and service not available everywhere. 9. INRIX XD® Traffic is available on all Model Year 16+ Audi A6, A7, TT and Q7 vehicles and is included with an Audi connect® subscription. Other models (Audi allroad® A3, A4, A5, A8, Q3 and Q5) include SiriusXM® Traffic for four years with the purchase of the vehicle. 10. Some Audi models are equipped with a keyless ignition feature. The details as to how the system works can vary, and Audi owners should consult their owner's literature or an authorized Audi dealer if they have further questions about the operation of this feature. Please note that Audi warns against leaving the vehicle unattended with the engine running, particularly in enclosed spaces. 11. SiriusXM® Satellite Radio and SiriusXM® Traffic subscriptions are sold separately or as a package after trial period and are continuous until you call SiriusXM® to cancel. See Customer Agreement for complete terms and more information at www.siriusxm.com. SiriusXM® Traffic service available in select markets. SiriusXM® U.S. Satellite Service available only to those in the 48 contiguous U.S.A., D.C. and Puerto Rico (with coverage limitations).

Technical Specifications

Engineering | Performance

	A4 2.0T
Engine type	Four-cylinder
Engine block/Cylinder head	Cast-iron/Aluminum-alloy
Displacement (cc)/Bore and stroke (mm)	1,984/82.5 x 92.8
Horsepower (@ rpm)	252 @ 5,000-6,000
Torque (lb-ft @ rpm)	273 @ 1,600-4,500
Compression ratio	9.6:1
Valvetrain	16-valve DOHC with Audi valvelift system
Induction/Fuel injection	Turbocharged/TFSI®
Start-stop engine efficiency system	■
Acceleration with front-wheel drive/quattro® all-wheel drive (0-60 mph)	6.1/5.7 seconds
Top track speed ¹	130 mph

Transmission | Drivetrain

Seven-speed S tronic® dual-clutch automatic transmission with front-wheel drive	■
Seven-speed S tronic® dual-clutch automatic transmission with quattro® all-wheel drive	Available

Body | Suspension | Chassis

ultra® lightweight technology—multi-material body construction (steel and aluminum composition)	■
Five-link front suspension	■
Five-link rear suspension	■
Sport suspension	Available
Adaptive damping suspension	Available
Ventilated front disc/Ventilated rear disc brakes (in)	13.3/13.0
Electromechanical power steering system	■
Steering ratio	15.9:1
Turning circle, curb-to-curb (ft)	38.1

Exterior measurements

	A4 2.0T
Wheelbase (in)	111.0
Length (in)	186.1
Height (in)	56.2
Overall width with mirrors (in)	79.6
Overall width without mirrors (in)	72.5
Track (in, front/rear)	61.9/61.2
Curb weight with front-wheel drive (lb)	3,483
Curb weight with quattro® all-wheel drive (lb)	3,626
Drag coefficient (Cw)	0.27

Interior measurements

Head room with sunroof (in, front/rear)	38.9/37.4
Leg room (in, front/rear)	41.3/35.7
Shoulder room (in, front/rear)	55.9/54.5
Cargo volume (cu ft)	13.0
Seating capacity	5

EPA mileage estimates | Capacities | Emissions

S tronic® dual-clutch automatic transmission with front-wheel drive (city/highway/combined) ²	NA
S tronic® dual-clutch automatic transmission with quattro® all-wheel drive (city/highway/combined) ²	NA
Engine oil (qt)	5.5
Fuel (gal)	15.3
Recommended fuel	Premium
Emissions rating	LEV III/Tier 3 125

■ Standard — Not applicable NA Information not available at time of printing

¹ Top track speed is electronically limited in the U.S. Always obey all speed and traffic laws. ² 2017 EPA estimates not available at time of printing. See www.fueleconomy.gov for details. Your mileage will vary and depends on several factors, including your driving habits and vehicle condition.

Wheels

17" 5-parallel-spoke design



Standard on Premium

18" 10-spoke-star design



Optional on Premium

18" 5-spoke dynamic design with contrasting Gray/partially polished finish



Standard on Premium Plus and Prestige

19" Audi Sport® 10-V-spoke design, summer tires¹



Optional on Premium Plus and Prestige

¹ Tires are supplied and warranted by their manufacturer. High-performance tires are designed for better performance and handling in warm climates. When driving in cold, snowy or icy weather, you should equip your vehicle with four all-season or winter tires, which offer better traction under those conditions. We suggest you use the Audi-recommended winter or all-season tires specified for your Audi. High-performance tires also have a lower aspect ratio that aids performance and handling. Driving over rough or damaged road surfaces, as well as debris, curbs and other obstacles, can cause serious damage to wheels, tires, vehicle body and suspension parts. Be careful to avoid road hazards and reduce your speed, especially if your vehicle is equipped with low-profile tires. Please also remember when making your selection that, while these tires deliver responsive handling, they may ride less comfortably and make more noise than others. Finally, these tires may wear more quickly than other choices. It is important that the inflation pressure is regularly checked and maintained at recommended levels.

Exterior Colors

Brilliant Black



Ibis White



Argus Brown metallic



Cuvée Silver metallic



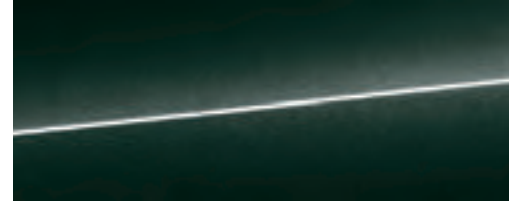
Florett Silver metallic



Glacier White metallic



Gotland Green metallic



Manhattan Gray metallic



Monsoon Gray metallic



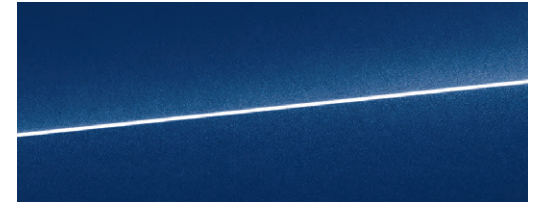
Moonlight Blue metallic



Mythos Black metallic



Scuba Blue metallic



Tango Red metallic



Exterior color options will vary based on model, trim level and package combination. See your dealer for details.

Interior Inlays

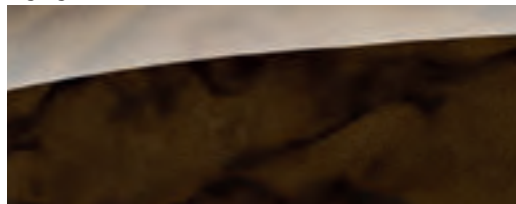


Aluminum Ellipse



Standard

High-gloss Dark Brown Walnut Wood



Optional

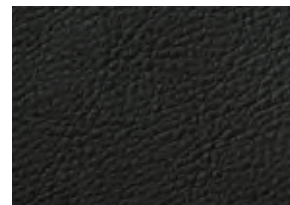
Natural Gray Oak Wood



Optional

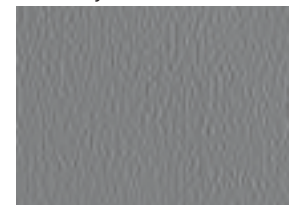
Interior Colors and Seat Selections

Black leather



Standard, Sport

Rock Gray leather



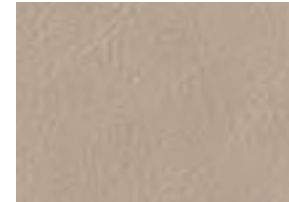
Standard, Sport

Nougat Brown leather



Standard, Sport

Atlas Beige leather



Standard

Black perforated leather



Ventilated sport¹

Rock Gray perforated leather



Ventilated sport¹

Nougat Brown perforated leather



Ventilated sport¹



Standard seat



Sport seat



Ventilated sport seat¹